

Converting Colors

RGB(217, 192, 182)

Have a look what the booklet for
RGB(217, 192, 182) contains.

RGB(217, 192, 182)	3
<i>Conversions</i>	4
<i>Details</i>	6
<i>Harmonies</i>	11
<i>Previews</i>	23
<i>Color Blindness Simulation</i>	26
<i>CSS Examples</i>	29

Color

RGB(217, 192, 182)

Conversions

Conversions Part 1

Format	Color
Hex	D9C0B6
RGB	217, 192, 182
RGB Percent	85%, 75%, 71%
CMY	0.1490, 0.2471, 0.2863
CMYK	0.00, 0.12, 0.16, 0.15
HSL	17°, 32%, 78%
HSV	17°, 16%, 85%
XYZ	55.9084, 55.8284, 52.0852
YIQ	198.3350, 18.1100, 2.1900

Conversions

Conversions Part 2

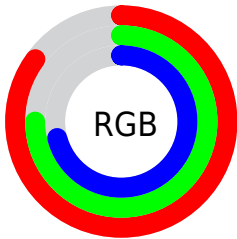
Format	Color
R _Y B	217, 196, 182
Decimal	14270646
CIE Lab	79.52, 7.23, 8.27
CIE LCh	80, 10.983, 48.825
Yxy	55.8284, 0.3413, 0.3408
Android (android.graphics.Color)	4292460726 (0xFFD9C0B6)
YUV	198.3350, -8.0532, 16.3692
Hunter-Lab	74.7184, 2.8063, 10.9726

Details

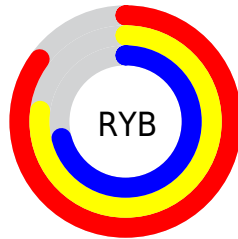
The RGB color **217, 192, 182** is a light color, and the websafe version is hex **CCCCCC**. A complement of this color would be **182, 207, 217**, and the grayscale version is **198, 198, 198**.

A 20% lighter version of the original color is **255, 248, 238**, and **162, 139, 129** is the 20% darker color. If you saturate the color by 10%, you get **217, 177, 160**, and if you desaturate by 10%, it is **217, 208, 204**.

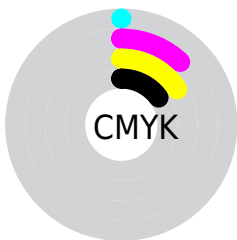
Distribution



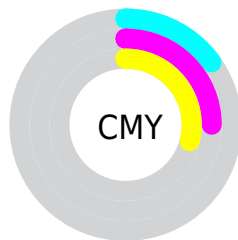
- Red (85%)
- Green (75%)
- Blue (71%)



- Red (85%)
- Yellow (77%)
- Blue (71%)



- Cyan (0%)
- Magenta (12%)
- Yellow (16%)
- Black (15%)




- Cyan (15%)
- Magenta (25%)
- Yellow (29%)

Brightness & Saturation Gradients


These gradients show how the RGB color 217, 192, 182 changes by changing the brightness by 10 percent. The first figure shows a shift by +10% for each color and the second figure -10%.

Similar to the brightness gradients but the following saturation gradients show a change of the RGB color 217, 192, 182 by changing the saturation by 10% instead.

 217, 192, 182

 217, 192, 182

255, 255, 255

 189, 165, 155


 255, 248, 238

 162, 139, 129

 135, 113, 104

 110, 89, 80

 85, 65, 57

 61, 43, 36


 39, 23, 14

 13, 0, 0

 0, 0, 0

 217, 192, 182

 217, 192, 182

 217, 177, 160

 217, 208, 204

 217, 161, 139

 217, 223, 225

 217, 146, 117

 217, 239, 247

 217, 130, 95

 217, 254, 255

 217, 114, 74

 217, 255, 255

 217, 99, 52

 217, 83, 30

 217, 68, 8

 217, 62, 0

Harmonies

Analogous

The Analogous color harmony consists of three colors that are next to each other on the color wheel.



219, 190, 191



217, 192, 182



209, 195, 177

Triad

The Triadic color harmony groups three colors that are evenly spaced from another and form a triangle on the color wheel.



217, 192, 182



177, 203, 193



194, 196, 216

Complementary

The Complementary color scheme is a pair of colors which are on the opposite of each other on the color wheel.



217, 192, 182



182, 207, 217

Split Complementary

Split-complementary colors differ from the complementary color scheme. The scheme consists of three colors, the original color and two neighbors of the complement color.



182, 199, 217



217, 192, 182



172, 203, 203

Square

The Square scheme is like the rectangle color scheme, but the four colors are evenly spaced on the color wheel.



217, 192, 182



187, 201, 183



174, 202, 212



207, 193, 211

Rectangle

The Rectangle color scheme consists of four colors that form a rectangle on the color wheel.



217, 192, 182



202, 197, 177



174, 202, 212



190, 197, 217

Sweetspot

The Sweet Spot groups the original color and five complimentary colors.



217, 192, 182



255, 246, 242



217, 182, 207



128, 122, 120



0, 0, 0



128, 128, 128

Same Dimension

The Same Dimension uses a secret algorithm to generate beautiful new colors.



217, 192, 182



255, 220, 207



217, 209, 182



110, 102, 99



173, 50, 0



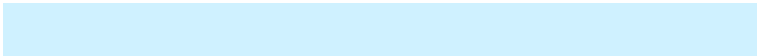
46, 13, 0

Inverse Universe

The Inverse Universe completely reimagines the original color for something new.



182, 207, 217



207, 241, 255



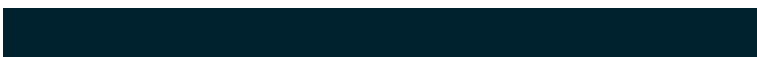
182, 190, 217



99, 107, 110



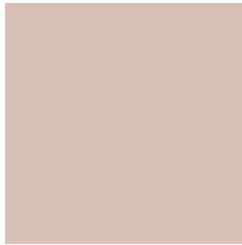
0, 124, 173



0, 33, 46

Previews

White Background



This preview shows how the RGB color 217, 192, 182 looks on a white background.

Color Contrast Check

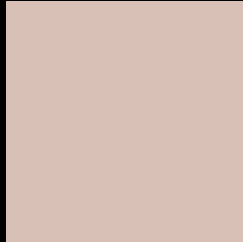
Large Text (above 18pt) WCAG AA × Fail

Any Text WCAG AA × Fail

Large Text (above 18pt) WCAG AAA × Fail

Any Text WCAG AAA × Fail

Black Background



This preview shows how the RGB color 217, 192, 182 looks on a black background.

Color Contrast Check

Large Text (above 18pt) WCAG AA ✓ Pass

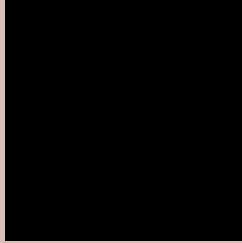
Any Text WCAG AA ✓ Pass

Large Text (above 18pt) WCAG AAA ✓ Pass

Any Text WCAG AAA ✓ Pass

If you want to check with other color combinations, try the [Color Contrast Checker](#).

RGB 217, 192, 182 Background



This preview shows how black text looks on a background with the RGB color 217, 192, 182.



This preview shows how white text looks on a background with the RGB color 217, 192, 182.

Color Blindness Simulation

Color vision deficiency is a very complex topic, and I could not describe the different causes any better than Wikipedia does, so if you want to learn more, you should check out their [article about color blindness](#).


Dichromacy



Original Color
217, 192, 182

Protanopia
204, 196, 184

Deuteranopia
222, 190, 182



Tritanopia
220, 189, 204

Trichromacy



Original Color

217, 192, 182

Protanomaly

209, 195, 183

Deuteranomaly

220, 191, 182

Tritanomaly

219, 190, 196

Monochromacy



Original Color

217, 192, 182

Achromatopsia

198, 198, 198

Achromatomaly

205, 196, 192

CSS Examples

Text

The CSS property to change the color of the text to RGB 217, 192, 182 is called "color". The color property can be set on classes, ids or directly on the HTML element.

This example shows how text in the color `rgb(217, 192, 182)` looks like.

```
.text, #text, p{  
    color:rgb(217, 192, 182)  
}
```

If you want to add a text shadow in that color use the text-shadow property, you can generate a text shadow directly with our [CSS Text Shadow Generator](#).

Here you see how black text with a 4 pixel rgb(217, 192, 182) colored shadow looks like.

```
.shadow{ text-shadow: 4px 4px 2px rgb(217, 192, 182) }
```

Border

The CSS property to change the border of an element to RGB 217, 192, 182 is called "border". The border property can be set on classes, ids or directly on the HTML element.

This example shows the color as border, it can be applied via the CSS property "border" or "border-color".

```
.border, #border, table{ border:4px solid rgb(217, 192, 182) }
```

If only the border color should be changed use the property `border-color`.

```
.border{ border-color:rgb(217, 192, 182) }
```

If you want to add a box shadow in that color use:

Here you see how a box with a 4 pixel `rgb(217, 192, 182)` colored shadow looks like.

```
.boxshadow{ -moz-box-shadow:4px 4px 4px  
4px rgb(217, 192, 182); -webkit-box-  
shadow:4px 4px 4px 4px rgb(217, 192, 182);  
box-shadow:4px 4px 4px 4px rgb(217, 192,  
182) }
```

Background

The CSS property to change the background color of an element to RGB 217, 192, 182 is called "background". The background property can be set on classes, ids or directly on the HTML element.

```
.background, #background, body{  
background: rgb(217, 192, 182) }
```

If only the background color should be changed can be used:

```
.background{ background-color: rgb(217,  
192, 182) }
```

This example shows the color as background, it is applied via the CSS property "background".

To optimize and compress your CSS code, you can use our [online CSS compressor and optimizer](#) based on csstidy. If you want to create a linear or radial gradient as background or border, check our [CSS Gradient Generator](#).

Hey! You found this booklet interesting? Support Converting Colors with the new Membership Option!

The pro membership hides all ads, plus gives you double the colors in the color bucket, and more awesome pro features!

[Learn more, Memberships starting at \\$2.50/m!](#)

**Follow me
on Twitter!**

@ConvertingColor