

Converting Colors

RGB(217, 203, 202)

Have a look what the booklet for
RGB(217, 203, 202) contains.

RGB(217, 203, 202)	3
<i>Conversions</i>	4
<i>Details</i>	6
<i>Harmonies</i>	11
<i>Previews</i>	23
<i>Color Blindness Simulation</i>	26
<i>CSS Examples</i>	29

Color

RGB(217, 203, 202)

Conversions

Conversions Part 1

Format	Color
Hex	D9CBCA
RGB	217, 203, 202
RGB Percent	85%, 80%, 79%
CMY	0.1490, 0.2039, 0.2078
CMYK	0.00, 0.06, 0.07, 0.15
HSL	4°, 16%, 82%
HSV	4°, 7%, 85%
XYZ	60.6319, 61.7279, 64.5961
YIQ	207.0720, 8.6650, 2.6570

Conversions

Conversions Part 2

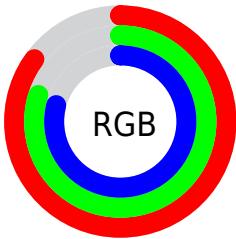
Format	Color
RYP	217, 203, 202
Decimal	14273482
CIELab	82.77, 4.69, 2.24
CIElCh	83, 5.199, 25.497
Yxy	61.7279, 0.3243, 0.3302
Android (android.graphics.Color)	4292463562 (0xFFD9CBCA)
YUV	207.0720, -2.5005, 8.7069
Hunter-Lab	78.5671, 0.2599, 6.2500

Details

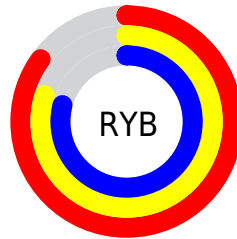
The RGB color **217, 203, 202** is a light color, and the websafe version is hex **CCCCCC**. A complement of this color would be **202, 216, 217**, and the grayscale version is **207, 207, 207**.

A 20% lighter version of the original color is 255, 255, 255, and **162, 149, 148** is the 20% darker color. If you saturate the color by 10%, you get **217, 183, 180**, and if you desaturate by 10%, it is **217, 223, 224**.

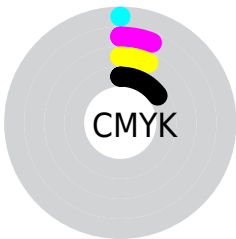
Distribution



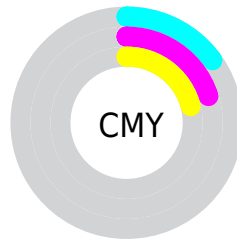
- Red (85%)
- Green (80%)
- Blue (79%)



- Red (85%)
- Yellow (80%)
- Blue (79%)



- Cyan (0%)
- Magenta (6%)
- Yellow (7%)
- Black (15%)



- Cyan (15%)
- Magenta (20%)
- Yellow (21%)

Brightness & Saturation Gradients

These gradients show how the RGB color 217, 203, 202 changes by changing the brightness by 10 percent. The first figure shows a shift by +10% for each color and the second figure -10%.

Similar to the brightness gradients but the following saturation gradients show a change of the RGB color 217, 203, 202 by changing the saturation by 10% instead.

■ 217, 203, 202

255, 255, 255

■ 217, 203, 202

■ 189, 176, 175

■ 162, 149, 148

■ 136, 123, 122

■ 110, 98, 97

■ 86, 74, 74

■ 63, 52, 51

■ 41, 31, 30

■ 21, 6, 5

■ 0, 0, 0

■ 217, 203, 202

■ 217, 203, 202

■ 217, 183, 180

■ 217, 223, 224

■ 217, 162, 159

■ 217, 244, 245

■ 217, 142, 137

■ 217, 255, 255

■ 217, 122, 115

■ 217, 102, 94

■ 217, 81, 72

■ 217, 61, 50

■ 217, 41, 28

■ 217, 21, 7

Harmonies

Analogous

The Analogous color harmony consists of three colors that are next to each other on the color wheel.



216, 203, 207



217, 203, 202



215, 204, 198

Triad

The Triadic color harmony groups three colors that are evenly spaced from another and form a triangle on the color wheel.



217, 203, 202



200, 208, 200



200, 207, 216

Complementary

The Complementary color scheme is a pair of colors which are on the opposite of each other on the color wheel.



217, 203, 202



202, 216, 217

Split Complementary

Split-complementary colors differ from the complementary color scheme. The scheme consists of three colors, the original color and two neighbors of the complement color.



196, 208, 214



217, 203, 202



196, 209, 205

Square

The Square scheme is like the rectangle color scheme, but the four colors are evenly spaced on the color wheel.



217, 203, 202



206, 207, 197



194, 209, 210



206, 205, 215

Rectangle

The Rectangle color scheme consists of four colors that form a rectangle on the color wheel.



217, 203, 202



213, 205, 197



194, 209, 210



199, 207, 215

Sweetspot

The Sweet Spot groups the original color and five complimentary colors.



217, 203, 202



255, 250, 250



217, 202, 216



128, 125, 125



0, 0, 0



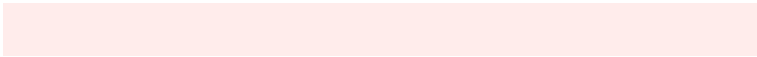
128, 128, 128

Same Dimension

The Same Dimension uses a secret algorithm to generate beautiful new colors.



217, 203, 202



255, 236, 235



217, 210, 202



110, 99, 99



173, 12, 0



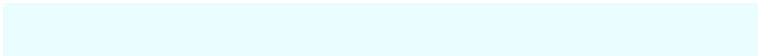
46, 3, 0

Inverse Universe

The Inverse Universe completely reimagines the original color for something new.



202, 216, 217



235, 254, 255



202, 209, 217



99, 109, 110



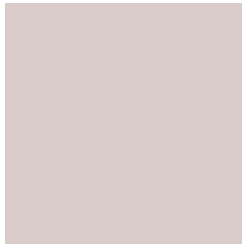
0, 162, 173



0, 43, 46

Previews

White Background



This preview shows how the RGB color 217, 203, 202 looks on a white background.

Color Contrast Check

Large Text (above 18pt) WCAG AA × Fail

Any Text WCAG AA × Fail

Large Text (above 18pt) WCAG AAA × Fail

Any Text WCAG AAA × Fail

Black Background



This preview shows how the RGB color 217, 203, 202 looks on a black background.

Color Contrast Check

Large Text (above 18pt) WCAG AA ✓ Pass

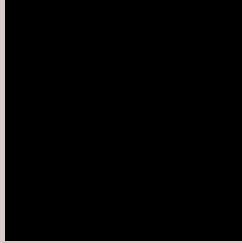
Any Text WCAG AA ✓ Pass

Large Text (above 18pt) WCAG AAA ✓ Pass

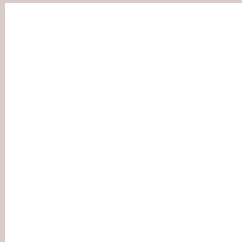
Any Text WCAG AAA ✓ Pass

If you want to check with other color combinations, try the [Color Contrast Checker](#).

RGB 217, 203, 202 Background



This preview shows how black text looks on a background with the RGB color 217, 203, 202.



This preview shows how white text looks on a background with the RGB color 217, 203, 202.

Color Blindness Simulation

Color vision deficiency is a very complex topic, and I could not describe the different causes any better than Wikipedia does, so if you want to learn more, you should check out their [article about color blindness](#).

Dichromacy



Original Color
[217, 203, 202](#)

Protanopia
[210, 205, 203](#)

Deuteranopia
[227, 199, 203](#)



Tritanopia
219, 201, 217

Trichromacy



Original Color

217, 203, 202

Protanomaly

213, 204, 203

Deuteranomaly

223, 200, 203

Tritanomaly

218, 202, 212

Monochromacy



Original Color

217, 203, 202

Achromatopsia

207, 207, 207

Achromatomaly

211, 206, 205

CSS Examples

Text

The CSS property to change the color of the text to RGB 217, 203, 202 is called "color". The color property can be set on classes, ids or directly on the HTML element.

This example shows how text in the color rgb(217, 203, 202) looks like.

```
.text, #text, p{  
    color:rgb(217, 203, 202)  
}
```

If you want to add a text shadow in that color use the text-shadow property, you can generate a text shadow directly with our [CSS Text Shadow Generator](#).

Here you see how black text with a 4 pixel rgb(217, 203, 202) colored shadow looks like.

```
.shadow{ text-shadow: 4px 4px 2px rgb(217, 203, 202) }
```

Border

The CSS property to change the border of an element to RGB 217, 203, 202 is called "border". The border property can be set on classes, ids or directly on the HTML element.

This example shows the color as border, it can be applied via the CSS property "border" or "border-color".

```
.border, #border, table{ border:4px solid rgb(217, 203, 202) }
```

If only the border color should be changed use the property `border-color`.

```
.border{ border-color:rgb(217, 203, 202) }
```

If you want to add a box shadow in that color use:

Here you see how a box with a 4 pixel `rgb(217, 203, 202)` colored shadow looks like.

```
.boxshadow{ -moz-box-shadow:4px 4px 4px  
4px rgb(217, 203, 202); -webkit-box-  
shadow:4px 4px 4px 4px rgb(217, 203, 202);  
box-shadow:4px 4px 4px 4px rgb(217, 203,  
202) }
```

Background

The CSS property to change the background color of an element to RGB 217, 203, 202 is called "background". The background property can be set on classes, ids or directly on the HTML element.

```
.background, #background, body{  
background: rgb(217, 203, 202) }
```

If only the background color should be changed can be used:

```
.background{ background-color: rgb(217,  
203, 202) }
```

This example shows the color as background, it is applied via the CSS property "background".

To optimize and compress your CSS code, you can use our [online CSS compressor and optimizer](#) based on csstidy. If you want to create a linear or radial gradient as background or border, check our [CSS Gradient Generator](#).

Hey! You found this booklet interesting? Support Converting Colors with the new Membership Option!

The pro membership hides all ads, plus gives you double the colors in the color bucket, and more awesome pro features!

[Learn more, Memberships starting at \\$2.50/m!](#)

**Follow me
on Twitter!**

@ConvertingColor