

# Converting Colors

RGB(218, 142, 155)

Have a look what the booklet for  
RGB(218, 142, 155) contains.

<b>RGB(218, 142, 155)</b> .....	3
<i><b>Conversions</b></i> .....	4
<i><b>Details</b></i> .....	6
<i><b>Harmonies</b></i> .....	11
<i><b>Previews</b></i> .....	23
<i><b>Color Blindness Simulation</b></i> .....	26
<i><b>CSS Examples</b></i> .....	29

# **Color**

**RGB(218, 142, 155)**

# Conversions

## Conversions Part 1

Format	Color
Hex	DA8E9B
RGB	218, 142, 155
RGB Percent	85%, 56%, 61%
CMY	0.1451, 0.4431, 0.3922
CMYK	0.00, 0.35, 0.29, 0.15
HSL	350°, 51%, 71%
HSV	350°, 35%, 85%
XYZ	44.5028, 36.6180, 35.7328
YIQ	166.2060, 41.1230, 20.1550

# Conversions

## Conversions Part 2

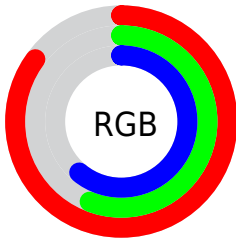
Format	Color
R <sub>Y</sub> B	218, 142, 155
Decimal	14323355
CIE Lab	66.99, 30.54, 5.13
CIE LCh	67, 30.972, 9.537
Yxy	36.6180, 0.3808, 0.3134
Android (android.graphics.Color)	4292513435 (0xFFDA8E9B)
YUV	166.2060, -5.5246, 45.4233
Hunter-Lab	60.5128, 25.3766, 7.3483

# Details

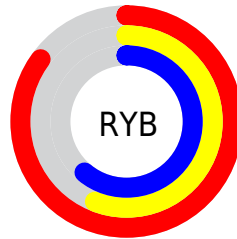
The RGB color **218, 142, 155** is a light color, and the websafe version is hex **CC9999**. A complement of this color would be **142, 218, 205**, and the grayscale version is **166, 166, 166**.

A 20% lighter version of the original color is **255, 196, 209**, and **161, 91, 104** is the 20% darker color. If you saturate the color by 10%, you get **218, 120, 137**, and if you desaturate by 10%, it is **218, 164, 173**.

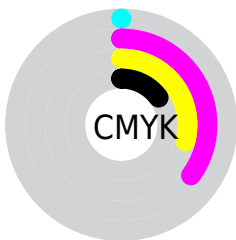
# Distribution



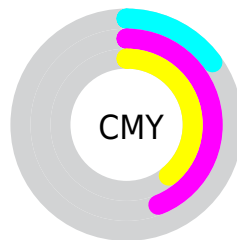
- Red (85%)
- Green (56%)
- Blue (61%)



- Red (85%)
- Yellow (56%)
- Blue (61%)



- Cyan (0%)
- Magenta (35%)
- Yellow (29%)
- Black (15%)



- Cyan (15%)
- Magenta (44%)
- Yellow (39%)

# Brightness & Saturation Gradients


These gradients show how the RGB color 218, 142, 155 changes by changing the brightness by 10 percent. The first figure shows a shift by +10% for each color and the second figure -10%.

Similar to the brightness gradients but the following saturation gradients show a change of the RGB color 218, 142, 155 by changing the saturation by 10% instead.



 218, 142, 155

255, 255, 255


 255, 196, 209

 255, 225, 238

255, 254, 255


 218, 142, 155

 189, 116, 129

 161, 91, 104

 134, 66, 80

 107, 42, 57

 81, 18, 36

 56, 0, 14

 31, 0, 1

 0, 0, 0

 218, 142, 155

 218, 142, 155

 218, 120, 137

 218, 164, 173

 218, 98, 119

 218, 186, 191

 218, 77, 101

 218, 207, 209

 218, 55, 83

 218, 229, 227

 218, 33, 65

 218, 251, 245

 218, 11, 47

 218, 255, 255

 218, 0, 37

# Harmonies

## Analogous

The Analogous color harmony consists of three colors that are next to each other on the color wheel.



206, 145, 183



218, 142, 155



215, 146, 129

# Triad

The Triadic color harmony groups three colors that are evenly spaced from another and form a triangle on the color wheel.



218, 142, 155



143, 172, 119



97, 171, 215

# Complementary

The Complementary color scheme is a pair of colors which are on the opposite of each other on the color wheel.



218, 142, 155



142, 218, 205

# Split Complementary

Split-complementary colors differ from the complementary color scheme. The scheme consists of three colors, the original color and two neighbors of the complement color.



70, 177, 198



218, 142, 155



110, 177, 143

# Square

The Square scheme is like the rectangle color scheme, but the four colors are evenly spaced on the color wheel.



218, 142, 155



173, 164, 108



79, 178, 171



139, 163, 218

# Rectangle

The Rectangle color scheme consists of four colors that form a rectangle on the color wheel.



218, 142, 155



205, 152, 116



79, 178, 171



85, 173, 210



# Sweetspot

The Sweet Spot groups the original color and five complimentary colors.



218, 142, 155



255, 230, 234



204, 142, 218



128, 112, 115



0, 0, 0



128, 128, 128



# Same Dimension

The Same Dimension uses a secret algorithm to generate beautiful new colors.



218, 142, 155



255, 148, 166



218, 166, 142



110, 99, 101



173, 0, 30



46, 0, 8



# Inverse Universe

The Inverse Universe completely reimagines the original color for something new.



218, 142, 155



255, 148, 166



142, 194, 218



110, 99, 101



173, 0, 30

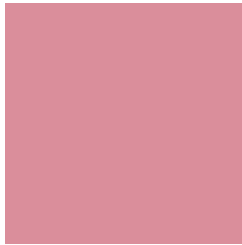


46, 0, 8



# Previews

## White Background



This preview shows how the RGB color 218, 142, 155 looks on a white background.

## Color Contrast Check

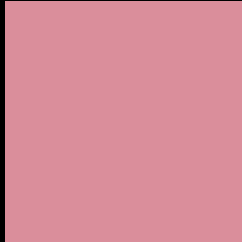
Large Text (above 18pt) WCAG AA × Fail

Any Text WCAG AA × Fail

Large Text (above 18pt) WCAG AAA × Fail

Any Text WCAG AAA × Fail

# Black Background



This preview shows how the RGB color 218, 142, 155 looks on a black background.

## Color Contrast Check

Large Text (above 18pt) WCAG AA ✓ Pass

Any Text WCAG AA ✓ Pass

Large Text (above 18pt) WCAG AAA ✓ Pass

Any Text WCAG AAA ✓ Pass

If you want to check with other color combinations, try the [Color Contrast Checker](#).



## RGB 218, 142, 155 Background



This preview shows how black text looks on a background with the RGB color 218, 142, 155.



This preview shows how white text looks on a background with the RGB color 218, 142, 155.

# Color Blindness Simulation

Color vision deficiency is a very complex topic, and I could not describe the different causes any better than Wikipedia does, so if you want to learn more, you should check out their [article about color blindness](#).

## Dichromacy



**Original Color**  
218, 142, 155

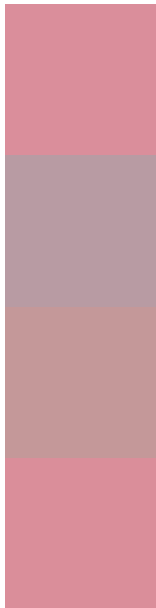
**Protanopia**  
165, 163, 167

**Deuteranopia**  
183, 158, 152



**Tritanopia**  
218, 142, 153

# Trichromacy



**Original Color**

218, 142, 155

**Protanomaly**

184, 155, 163

**Deuteranomaly**

196, 152, 153

**Tritanomaly**

218, 142, 154

# Monochromacy



**Original Color**

218, 142, 155

**Achromatopsia**

166, 166, 166

**Achromatomaly**

185, 157, 162

# CSS Examples

## Text

The CSS property to change the color of the text to RGB 218, 142, 155 is called "color". The color property can be set on classes, ids or directly on the HTML element.

This example shows how text in the color rgb(218, 142, 155) looks like.

```
.text, #text, p{  
    color:rgb(218, 142, 155)  
}
```

If you want to add a text shadow in that color use the text-shadow property, you can generate a text shadow directly with our [CSS Text Shadow Generator](#).

Here you see how black text with a 4 pixel rgb(218, 142, 155) colored shadow looks like.

```
.shadow{ text-shadow: 4px 4px 2px rgb(218, 142, 155) }
```

## Border

The CSS property to change the border of an element to RGB 218, 142, 155 is called "border". The border property can be set on classes, ids or directly on the HTML element.

This example shows the color as border, it can be applied via the CSS property "border" or "border-color".

```
.border, #border, table{ border:4px solid rgb(218, 142, 155) }
```

If only the border color should be changed use the property `border-color`.

```
.border{ border-color:rgb(218, 142, 155) }
```

If you want to add a box shadow in that color use:

Here you see how a box with a 4 pixel `rgb(218, 142, 155)` colored shadow looks like.

```
.boxshadow{ -moz-box-shadow:4px 4px 4px  
4px rgb(218, 142, 155); -webkit-box-  
shadow:4px 4px 4px 4px rgb(218, 142, 155);  
box-shadow:4px 4px 4px 4px rgb(218, 142,  
155) }
```

# Background

The CSS property to change the background color of an element to RGB 218, 142, 155 is called "background". The background property can be set on classes, ids or directly on the HTML element.

```
.background, #background, body{  
background: rgb(218, 142, 155) }
```

If only the background color should be changed can be used:

```
.background{ background-color: rgb(218,  
142, 155) }
```

This example shows the color as background, it is applied via the CSS property "background".

To optimize and compress your CSS code, you can use our [online CSS compressor and optimizer](#) based on csstidy. If you want to create a linear or radial gradient as background or border, check our [CSS Gradient Generator](#).



Hey! You found this booklet interesting? Support Converting Colors with the new Membership Option!

The pro membership hides all ads, plus gives you double the colors in the color bucket, and more awesome pro features!

**[Learn more, Memberships starting at \\$2.50/m!](#)**

**Follow me  
on Twitter!**

@ConvertingColor