

Converting Colors

RGB(218, 158, 146)

Have a look what the booklet for
RGB(218, 158, 146) contains.

RGB(218, 158, 146)	3
<i>Conversions</i>	4
<i>Details</i>	6
<i>Harmonies</i>	11
<i>Previews</i>	23
<i>Color Blindness Simulation</i>	26
<i>CSS Examples</i>	29

Color

RGB(218, 158, 146)

Conversions

Conversions Part 1

Format	Color
Hex	DA9E92
RGB	218, 158, 146
RGB Percent	85%, 62%, 57%
CMY	0.1451, 0.3804, 0.4275
CMYK	0.00, 0.28, 0.33, 0.15
HSL	10°, 49%, 71%
HSV	10°, 33%, 85%
XYZ	46.3286, 41.4345, 32.7500
YIQ	174.5720, 39.6120, 8.9880

Conversions

Conversions Part 2

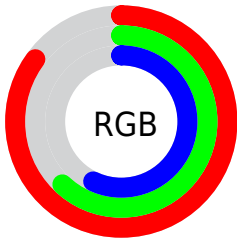
Format	Color
R _Y B	218, 160, 146
Decimal	14327442
CIE Lab	70.48, 20.74, 15.10
CIE LCh	70, 25.655, 36.055
Yxy	41.4345, 0.3844, 0.3438
Android (android.graphics.Color)	4292517522 (0xFFDA9E92)
YUV	174.5720, -14.0860, 38.0864
Hunter-Lab	64.3696, 15.8246, 14.8931

Details

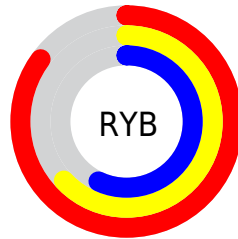
The RGB color **218, 158, 146** is a light color, and the websafe version is hex **CC9999**. A complement of this color would be **146, 206, 218**, and the grayscale version is **175, 175, 175**.

A 20% lighter version of the original color is **255, 213, 200**, and **161, 106, 95** is the 20% darker color. If you saturate the color by 10%, you get **218, 140, 124**, and if you desaturate by 10%, it is **218, 176, 168**.

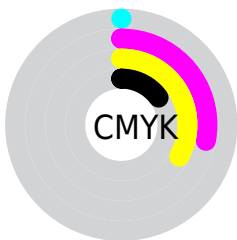
Distribution



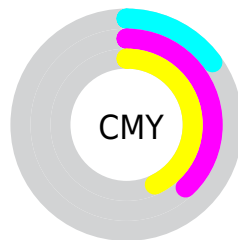
- Red (85%)
- Green (62%)
- Blue (57%)



- Red (85%)
- Yellow (63%)
- Blue (57%)



- Cyan (0%)
- Magenta (28%)
- Yellow (33%)
- Black (15%)



- Cyan (15%)
- Magenta (38%)
- Yellow (43%)

Brightness & Saturation Gradients

These gradients show how the RGB color 218, 158, 146 changes by changing the brightness by 10 percent. The first figure shows a shift by +10% for each color and the second figure -10%.

Similar to the brightness gradients but the following saturation gradients show a change of the RGB color 218, 158, 146 by changing the saturation by 10% instead.


 218, 158, 146

 218, 158, 146

255, 255, 255

 189, 132, 120

 255, 213, 200

 161, 106, 95

 255, 241, 228

 134, 82, 72

 108, 58, 49

 82, 36, 28

 57, 14, 3

 36, 0, 1

 0, 0, 0

 218, 158, 146

 218, 158, 146

■ 218, 140, 124

■ 218, 176, 168

■ 218, 122, 102

■ 218, 194, 190

■ 218, 104, 81

■ 218, 212, 211

■ 218, 85, 59

■ 218, 231, 233

■ 218, 67, 37

■ 218, 249, 255

■ 218, 49, 15

■ 218, 255, 255

■ 218, 36, 0

Harmonies

Analogous

The Analogous color harmony consists of three colors that are next to each other on the color wheel.



219, 155, 168



218, 158, 146



206, 165, 130

Triad

The Triadic color harmony groups three colors that are evenly spaced from another and form a triangle on the color wheel.



218, 158, 146



132, 184, 153



150, 173, 218

Complementary

The Complementary color scheme is a pair of colors which are on the opposite of each other on the color wheel.



218, 158, 146



146, 206, 218

Split Complementary

Split-complementary colors differ from the complementary color scheme. The scheme consists of three colors, the original color and two neighbors of the complement color.



120, 180, 214



218, 158, 146



110, 186, 176

Square

The Square scheme is like the rectangle color scheme, but the four colors are evenly spaced on the color wheel.



218, 158, 146



159, 179, 134



104, 184, 199



182, 165, 210

Rectangle

The Rectangle color scheme consists of four colors that form a rectangle on the color wheel.



218, 158, 146



192, 170, 126



104, 184, 199



139, 175, 218

Sweetspot

The Sweet Spot groups the original color and five complimentary colors.



218, 158, 146



255, 234, 230



218, 146, 206



128, 115, 112



0, 0, 0



128, 128, 128

Same Dimension

The Same Dimension uses a secret algorithm to generate beautiful new colors.



218, 158, 146



255, 170, 153



218, 194, 146



110, 101, 99



173, 29, 0



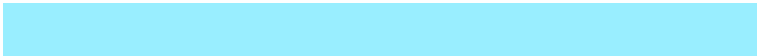
46, 8, 0

Inverse Universe

The Inverse Universe completely reimagines the original color for something new.



146, 206, 218



153, 238, 255



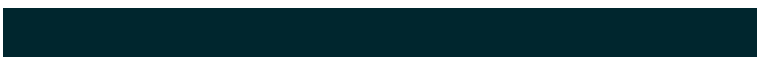
146, 170, 218



99, 108, 110



0, 144, 173



0, 38, 46

Previews

White Background



This preview shows how the RGB color 218, 158, 146 looks on a white background.

Color Contrast Check

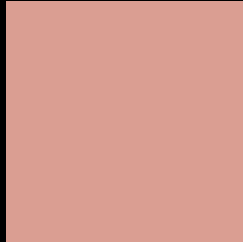
Large Text (above 18pt) WCAG AA × Fail

Any Text WCAG AA × Fail

Large Text (above 18pt) WCAG AAA × Fail

Any Text WCAG AAA × Fail

Black Background



This preview shows how the RGB color 218, 158, 146 looks on a black background.

Color Contrast Check

Large Text (above 18pt) WCAG AA ✓ Pass

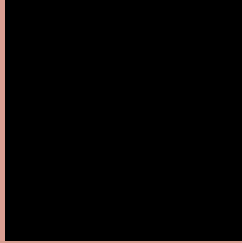
Any Text WCAG AA ✓ Pass

Large Text (above 18pt) WCAG AAA ✓ Pass

Any Text WCAG AAA ✓ Pass

If you want to check with other color combinations, try the [Color Contrast Checker](#).

RGB 218, 158, 146 Background



This preview shows how black text looks on a background with the RGB color 218, 158, 146.

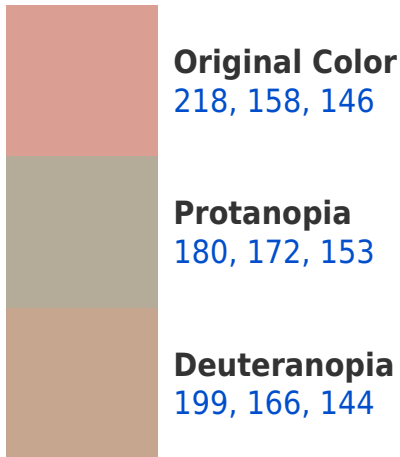


This preview shows how white text looks on a background with the RGB color 218, 158, 146.

Color Blindness Simulation

Color vision deficiency is a very complex topic, and I could not describe the different causes any better than Wikipedia does, so if you want to learn more, you should check out their [article about color blindness](#).

Dichromacy





Tritanopia
220, 155, 167

Trichromacy



Original Color

218, 158, 146

Protanomaly

194, 167, 150

Deuteranomaly

206, 163, 145

Tritanomaly

219, 156, 159

Monochromacy



Original Color

218, 158, 146

Achromatopsia

175, 175, 175

Achromatomaly

191, 169, 164

CSS Examples

Text

The CSS property to change the color of the text to RGB 218, 158, 146 is called "color". The color property can be set on classes, ids or directly on the HTML element.

This example shows how text in the color rgb(218, 158, 146) looks like.

```
.text, #text, p{  
    color:rgb(218, 158, 146)  
}
```

If you want to add a text shadow in that color use the text-shadow property, you can generate a text shadow directly with our [CSS Text Shadow Generator](#).

Here you see how black text with a 4 pixel rgb(218, 158, 146) colored shadow looks like.

```
.shadow{ text-shadow: 4px 4px 2px rgb(218, 158, 146) }
```

Border

The CSS property to change the border of an element to RGB 218, 158, 146 is called "border". The border property can be set on classes, ids or directly on the HTML element.

This example shows the color as border, it can be applied via the CSS property "border" or "border-color".

```
.border, #border, table{ border:4px solid rgb(218, 158, 146) }
```

If only the border color should be changed use the property `border-color`.

```
.border{ border-color:rgb(218, 158, 146) }
```

If you want to add a box shadow in that color use:

Here you see how a box with a 4 pixel `rgb(218, 158, 146)` colored shadow looks like.

```
.boxshadow{ -moz-box-shadow:4px 4px 4px  
4px rgb(218, 158, 146); -webkit-box-  
shadow:4px 4px 4px 4px rgb(218, 158, 146);  
box-shadow:4px 4px 4px 4px rgb(218, 158,  
146) }
```

Background

The CSS property to change the background color of an element to RGB 218, 158, 146 is called "background". The background property can be set on classes, ids or directly on the HTML element.

```
.background, #background, body{  
background: rgb(218, 158, 146) }
```

If only the background color should be changed can be used:

```
.background{ background-color: rgb(218,  
158, 146) }
```

This example shows the color as background, it is applied via the CSS property "background".

To optimize and compress your CSS code, you can use our [online CSS compressor and optimizer](#) based on csstidy. If you want to create a linear or radial gradient as background or border, check our [CSS Gradient Generator](#).

Hey! You found this booklet interesting? Support Converting Colors with the new Membership Option!

The pro membership hides all ads, plus gives you double the colors in the color bucket, and more awesome pro features!

[Learn more, Memberships starting at \\$2.50/m!](#)

**Follow me
on Twitter!**

@ConvertingColor