

Converting Colors

RGB(218, 169, 162)

Have a look what the booklet for
RGB(218, 169, 162) contains.

RGB(218, 169, 162)	3
<i>Conversions</i>	4
<i>Details</i>	6
<i>Harmonies</i>	11
<i>Previews</i>	23
<i>Color Blindness Simulation</i>	26
<i>CSS Examples</i>	29

Color

RGB(218, 169, 162)

Conversions

Conversions Part 1	
Format	Color
Hex	DAA9A2
RGB	218, 169, 162
RGB Percent	85%, 66%, 64%
CMY	0.1451, 0.3373, 0.3647
CMYK	0.00, 0.22, 0.26, 0.15
HSL	8°, 43%, 75%
HSV	8°, 26%, 85%
XYZ	49.6230, 45.8900, 40.4247
YIQ	182.8530, 31.4510, 8.2110

Conversions

Conversions Part 2

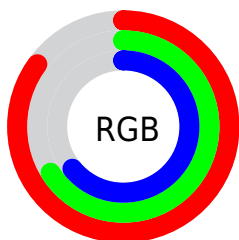
Format	Color
RYB	218, 170, 162
Decimal	14330274
CIELab	73.47, 16.95, 10.52
CIELCh	73, 19.946, 31.834
Yxy	45.8900, 0.3650, 0.3376
Android (android.graphics.Color)	4292520354 (0xFFDAA9A2)
YUV	182.8530, -10.2805, 30.8239
Hunter-Lab	67.7422, 12.2074, 12.0386

Details

The RGB color **218, 169, 162** is a light color, and the websafe version is hex **CC9999**. A complement of this color would be **162, 211, 218**, and the grayscale version is **183, 183, 183**.

A 20% lighter version of the original color is **255, 224, 217**, and **162, 117, 110** is the 20% darker color. If you saturate the color by 10%, you get **218, 150, 140**, and if you desaturate by 10%, it is **218, 188, 184**.

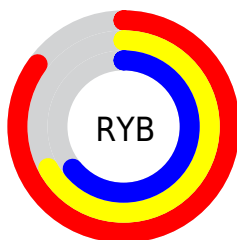
Distribution



Red (85%)

Green (66%)

Blue (64%)



Red (85%)

Yellow (67%)

Blue (64%)

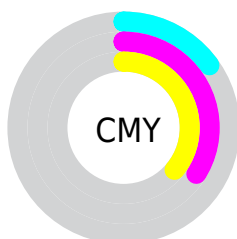


Cyan (0%)

Magenta (22%)

Yellow (26%)

Black (15%)



Cyan (15%)

Magenta (34%)

Yellow (36%)

Brightness & Saturation Gradients

These gradients show how the RGB color 218, 169, 162 changes by changing the brightness by 10 percent. The first figure shows a shift by +10% for each color and the second figure -10%.

Similar to the brightness gradients but the following saturation gradients show a change of the RGB color 218, 169, 162 by changing the saturation by 10% instead.


 218, 169, 162

255, 255, 255

 255, 224, 217

 255, 253, 245

 218, 169, 162

 190, 142, 136

 162, 117, 110

 135, 92, 86

 109, 68, 63

 84, 45, 41

 59, 24, 21

 38, 0, 0


 0, 0, 0

 218, 169, 162


 218, 169, 162

 218, 150, 140

 218, 188, 184

 218, 131, 118

 218, 207, 206

 218, 112, 97

 218, 226, 227

 218, 93, 75

 218, 245, 249

 218, 74, 53

 218, 255, 255

 218, 55, 31

 218, 35, 9

 218, 27, 0

Harmonies

Analogous

The Analogous color harmony consists of three colors that are next to each other on the color wheel.



217, 168, 180



218, 169, 162



209, 174, 149

Triad

The Triadic color harmony groups three colors that are evenly spaced from another and form a triangle on the color wheel.



218, 169, 162



153, 189, 163



161, 182, 217

Complementary

The Complementary color scheme is a pair of colors which are on the opposite of each other on the color wheel.



218, 169, 162



162, 211, 218

Split Complementary

Split-complementary colors differ from the complementary color scheme. The scheme consists of three colors, the original color and two neighbors of the complement color.



140, 187, 212



218, 169, 162



136, 191, 181

Square

The Square scheme is like the rectangle color scheme, but the four colors are evenly spaced on the color wheel.



218, 169, 162



173, 185, 149



131, 190, 199



185, 175, 211

Rectangle

The Rectangle color scheme consists of four colors that form a rectangle on the color wheel.



218, 169, 162



199, 178, 145



131, 190, 199



153, 184, 216

Sweetspot

The Sweet Spot groups the original color and five complimentary colors.



218, 169, 162



255, 237, 235



218, 162, 211



128, 116, 115



0, 0, 0



128, 128, 128

Same Dimension

The Same Dimension uses a secret algorithm to generate beautiful new colors.



218, 169, 162



255, 186, 176



218, 197, 162



110, 100, 99



173, 22, 0



46, 6, 0

Inverse Universe

The Inverse Universe completely reimagines the original color for something new.



162, 211, 218



176, 245, 255



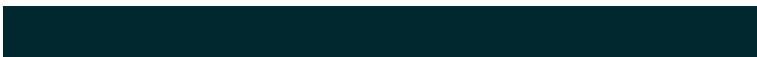
162, 183, 218



99, 108, 110



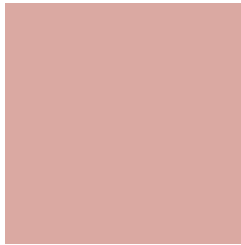
0, 152, 173



0, 40, 46

Previews

White Background



This preview shows how the RGB color 218, 169, 162 looks on a white background.

Color Contrast Check

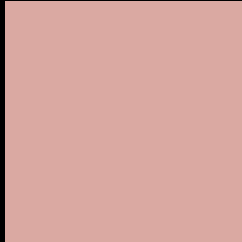
Large Text (above 18pt) WCAG AA × Fail

Any Text WCAG AA × Fail

Large Text (above 18pt) WCAG AAA × Fail

Any Text WCAG AAA × Fail

Black Background



This preview shows how the RGB color 218, 169, 162 looks on a black background.

Color Contrast Check

Large Text (above 18pt) WCAG AA ✓ Pass

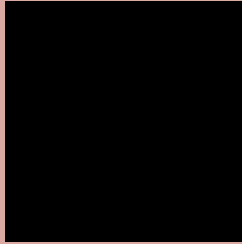
Any Text WCAG AA ✓ Pass

Large Text (above 18pt) WCAG AAA ✓ Pass

Any Text WCAG AAA ✓ Pass

If you want to check with other color combinations, try the [Color Contrast Checker](#).

RGB 218, 169, 162 Background



This preview shows how black text looks on a background with the RGB color 218, 169, 162.



This preview shows how white text looks on a background with the RGB color 218, 169, 162.

Color Blindness Simulation

Color vision deficiency is a very complex topic, and I could not describe the different causes any better than Wikipedia does, so if you want to learn more, you should check out their [article about color blindness](#).

Dichromacy



Original Color

218, 169, 162

Protanopia

187, 180, 168

Deuteranopia





205, 174, 161






Tritanopia

220, 166, 179

Trichromacy

	Original Color 218, 169, 162
	Protanomaly 198, 176, 166
	Deuteranomaly 210, 172, 161
	Tritanomaly 219, 167, 173

Monochromacy

	Original Color 218, 169, 162
	Achromatopsia 183, 183, 183
	Achromatomaly 196, 178, 175

CSS Examples

Text

The CSS property to change the color of the text to RGB 218, 169, 162 is called "color". The color property can be set on classes, ids or directly on the HTML element.

This example shows how text in the color rgb(218, 169, 162) looks like.

```
.text, #text, p{  
    color:rgb(218, 169, 162)  
}
```

If you want to add a text shadow in that color use the text-shadow property, you can generate a text shadow directly with our [CSS Text Shadow Generator](#).

Here you see how black text with a 4 pixel rgb(218, 169, 162) colored shadow looks like.

```
.shadow{ text-shadow: 4px 4px 2px rgb(218, 169, 162) }
```

Border

The CSS property to change the border of an element to RGB 218, 169, 162 is called "border". The border property can be set on classes, ids or directly on the HTML element.

This example shows the color as border, it can be applied via the CSS property "border" or "border-color".

```
.border, #border, table{ border:4px solid rgb(218, 169, 162) }
```

If only the border color should be changed use the property `border-color`.

```
.border{ border-color:rgb(218, 169, 162) }
```

If you want to add a box shadow in that color use:

Here you see how a box with a 4 pixel `rgb(218, 169, 162)` colored shadow looks like.

```
.boxshadow{ -moz-box-shadow:4px 4px 4px  
4px rgb(218, 169, 162); -webkit-box-  
shadow:4px 4px 4px 4px rgb(218, 169, 162);  
box-shadow:4px 4px 4px 4px rgb(218, 169,  
162) }
```

Background

The CSS property to change the background color of an element to RGB 218, 169, 162 is called "background". The background property can be set on classes, ids or directly on the HTML element.

```
.background, #background, body{  
background: rgb(218, 169, 162) }
```

If only the background color should be changed can be used:

```
.background{ background-color: rgb(218,  
169, 162) }
```

This example shows the color as background, it is applied via the CSS property "background".

To optimize and compress your CSS code, you can use our [online CSS compressor and optimizer](#) based on csstidy. If you want to create a linear or radial gradient as background or border, check our [CSS Gradient Generator](#).

Hey! You found this booklet
interesting? Support Converting
Colors with the new Membership
Option!

The pro membership hides all ads, plus gives you
double the colors in the color bucket, and more
awesome pro features!

[Learn more, Memberships starting at \\$2.50/m!](#)

**Follow me
on Twitter!**

@ConvertingColor