

Converting Colors

RGB(218, 177, 146)

Have a look what the booklet for
RGB(218, 177, 146) contains.

RGB(218, 177, 146)	3
<i>Conversions</i>	4
<i>Details</i>	6
<i>Harmonies</i>	11
<i>Previews</i>	23
<i>Color Blindness Simulation</i>	26
<i>CSS Examples</i>	29

Color

RGB(218, 177, 146)

Conversions

Conversions Part 1

Format	Color
Hex	DAB192
RGB	218, 177, 146
RGB Percent	85%, 69%, 57%
CMY	0.1451, 0.3059, 0.4275
CMYK	0.00, 0.19, 0.33, 0.15
HSL	26°, 49%, 71%
HSV	26°, 33%, 85%
XYZ	49.8239, 48.4250, 33.9151
YIQ	185.7250, 34.3870, -0.9490

Conversions

Conversions Part 2

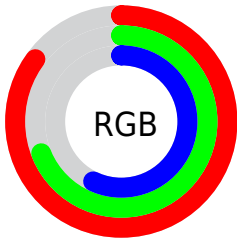
Format	Color
RYB	218, 200, 146
Decimal	14332306
CIELab	75.09, 10.51, 21.48
CIELCh	75, 23.917, 63.922
Yxy	48.4250, 0.3770, 0.3664
Android (android.graphics.Color)	4292522386 (0xFFDAB192)
YUV	185.7250, -19.5844, 28.3052
Hunter-Lab	69.5881, 6.0238, 19.8155

Details

The RGB color **218, 177, 146** is a light color, and the websafe version is hex **FFCC99**. A complement of this color would be **146, 187, 218**, and the grayscale version is **186, 186, 186**.

A 20% lighter version of the original color is **255, 233, 200**, and **162, 124, 95** is the 20% darker color. If you saturate the color by 10%, you get **218, 165, 124**, and if you desaturate by 10%, it is **218, 189, 168**.

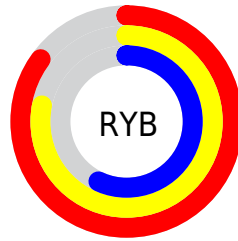
Distribution



Red (85%)

Green (69%)

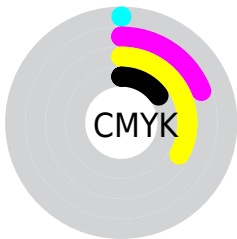
Blue (57%)



Red (85%)

Yellow (78%)

Blue (57%)

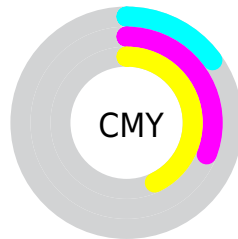


Cyan (0%)

Magenta (19%)

Yellow (33%)

Black (15%)



Cyan (15%)

Magenta (31%)

Yellow (43%)

Brightness & Saturation Gradients

These gradients show how the RGB color 218, 177, 146 changes by changing the brightness by 10 percent. The first figure shows a shift by +10% for each color and the second figure -10%.


Similar to the brightness gradients but the following saturation gradients show a change of the RGB color 218, 177, 146 by changing the saturation by 10% instead.


 218, 177, 146

255, 255, 255

 255, 233, 200

 255, 255, 228

 218, 177, 146

 190, 150, 120

 162, 124, 95

 135, 99, 71

 108, 76, 49

 83, 53, 27

 59, 31, 2

 35, 10, 0

 0, 0, 0

 218, 177, 146

 218, 177, 146

 218, 165, 124

 218, 189, 168

 218, 152, 102

 218, 202, 190

 218, 140, 81

 218, 214, 211

 218, 127, 59

 218, 227, 233

 218, 115, 37

 218, 239, 255

 218, 103, 15

 218, 251, 255

 218, 94, 0

 218, 255, 255

Harmonies

Analogous

The Analogous color harmony consists of three colors that are next to each other on the color wheel.



229, 171, 161



218, 177, 146



199, 184, 141

Triad

The Triadic color harmony groups three colors that are evenly spaced from another and form a triangle on the color wheel.



218, 177, 146



129, 197, 187



192, 178, 221

Complementary

The Complementary color scheme is a pair of colors which are on the opposite of each other on the color wheel.



218, 177, 146



146, 187, 218

Split Complementary

Split-complementary colors differ from the complementary color scheme. The scheme consists of three colors, the original color and two neighbors of the complement color.



163, 186, 228



218, 177, 146



123, 196, 209

Square

The Square scheme is like the rectangle color scheme, but the four colors are evenly spaced on the color wheel.



218, 177, 146



149, 196, 165



136, 192, 224



216, 172, 205

Rectangle

The Rectangle color scheme consists of four colors that form a rectangle on the color wheel.



218, 177, 146



183, 189, 144



136, 192, 224



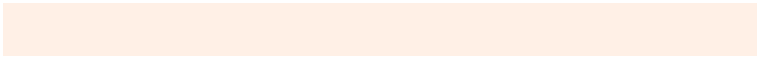
183, 181, 225

Sweetspot

The Sweet Spot groups the original color and five complimentary colors.



218, 177, 146



255, 240, 230



218, 146, 188



128, 119, 112



0, 0, 0



128, 128, 128

Same Dimension

The Same Dimension uses a secret algorithm to generate beautiful new colors.



218, 177, 146



255, 197, 153



218, 212, 146



110, 103, 99



173, 75, 0



46, 20, 0

Inverse Universe

The Inverse Universe completely reimagines the original color for something new.



146, 187, 218



153, 211, 255



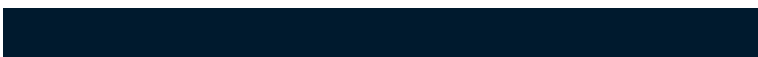
146, 152, 218



99, 105, 110



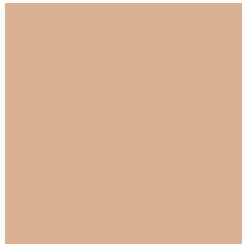
0, 99, 173



0, 26, 46

Previews

White Background



This preview shows how the RGB color 218, 177, 146 looks on a white background.

Color Contrast Check

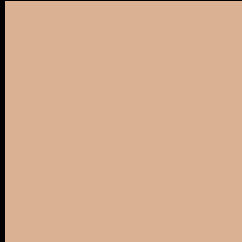
Large Text (above 18pt) WCAG AA × Fail

Any Text WCAG AA × Fail

Large Text (above 18pt) WCAG AAA × Fail

Any Text WCAG AAA × Fail

Black Background



This preview shows how the RGB color 218, 177, 146 looks on a black background.

Color Contrast Check

Large Text (above 18pt) WCAG AA ✓ Pass

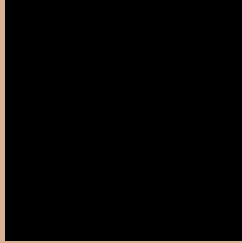
Any Text WCAG AA ✓ Pass

Large Text (above 18pt) WCAG AAA ✓ Pass

Any Text WCAG AAA ✓ Pass

If you want to check with other color combinations, try the [Color Contrast Checker](#).

RGB 218, 177, 146 Background



This preview shows how black text looks on a background with the RGB color 218, 177, 146.




This preview shows how white text looks on a background with the RGB color 218, 177, 146.

Color Blindness Simulation

Color vision deficiency is a very complex topic, and I could not describe the different causes any better than Wikipedia does, so if you want to learn more, you should check out their [article about color blindness](#).

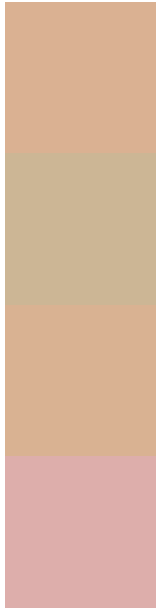
Dichromacy

	Original Color 218, 177, 146
	Protanopia 196, 185, 150
	Deuteranopia 216, 178, 146



Tritanopia
222, 172, 185

Trichromacy



Original Color
218, 177, 146

Protanomaly
204, 182, 149

Deuteranomaly
217, 178, 146

Tritanomaly
221, 174, 171

Monochromacy



Original Color
218, 177, 146

Achromatopsia
186, 186, 186

Achromatomaly
198, 183, 171

CSS Examples

Text

The CSS property to change the color of the text to RGB 218, 177, 146 is called "color". The color property can be set on classes, ids or directly on the HTML element.

This example shows how text in the color `rgb(218, 177, 146)` looks like.

```
.text, #text, p{  
    color:rgb(218, 177, 146)  
}
```

If you want to add a text shadow in that color use the text-shadow property, you can generate a text shadow directly with our [CSS Text Shadow Generator](#).

Here you see how black text with a 4 pixel rgb(218, 177, 146) colored shadow looks like.

```
.shadow{ text-shadow: 4px 4px 2px rgb(218, 177, 146) }
```

Border

The CSS property to change the border of an element to RGB 218, 177, 146 is called "border". The border property can be set on classes, ids or directly on the HTML element.

This example shows the color as border, it can be applied via the CSS property "border" or "border-color".

```
.border, #border, table{ border:4px solid rgb(218, 177, 146) }
```

If only the border color should be changed use the property `border-color`.

```
.border{ border-color:rgb(218, 177, 146) }
```

If you want to add a box shadow in that color use:

Here you see how a box with a 4 pixel `rgb(218, 177, 146)` colored shadow looks like.

```
.boxshadow{ -moz-box-shadow:4px 4px 4px  
4px rgb(218, 177, 146); -webkit-box-  
shadow:4px 4px 4px 4px rgb(218, 177, 146);  
box-shadow:4px 4px 4px 4px rgb(218, 177,  
146) }
```

Background

The CSS property to change the background color of an element to RGB 218, 177, 146 is called "background". The background property can be set on classes, ids or directly on the HTML element.

```
.background, #background, body{  
background: rgb(218, 177, 146) }
```

If only the background color should be changed can be used:

```
.background{ background-color: rgb(218,  
177, 146) }
```

This example shows the color as background, it is applied via the CSS property "background".

To optimize and compress your CSS code, you can use our [online CSS compressor and optimizer](#) based on csstidy. If you want to create a linear or radial gradient as background or border, check our [CSS Gradient Generator](#).

Hey! You found this booklet interesting? Support Converting Colors with the new Membership Option!

The pro membership hides all ads, plus gives you double the colors in the color bucket, and more awesome pro features!

[Learn more, Memberships starting at \\$2.50/m!](#)

**Follow me
on Twitter!**

@ConvertingColor