

Converting Colors

RGB(218, 177, 161)

Have a look what the booklet for
RGB(218, 177, 161) contains.

RGB(218, 177, 161)	3
<i>Conversions</i>	4
<i>Details</i>	6
<i>Harmonies</i>	11
<i>Previews</i>	23
<i>Color Blindness Simulation</i>	26
<i>CSS Examples</i>	29

Color

RGB(218, 177, 161)

Conversions

Conversions Part 1

Format	Color
Hex	DAB1A1
RGB	218, 177, 161
RGB Percent	85%, 69%, 63%
CMY	0.1451, 0.3059, 0.3686
CMYK	0.00, 0.19, 0.26, 0.15
HSL	17°, 44%, 74%
HSV	17°, 26%, 85%
XYZ	51.0686, 48.9229, 40.4697
YIQ	187.4350, 29.5720, 3.7160

Conversions

Conversions Part 2

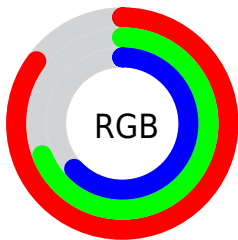
Format	Color
R_{YB}	218, 183, 161
Decimal	14332321
CIE Lab	75.40, 12.50, 13.79
CIE LCh	75, 18.617, 47.811
Yxy	48.9229, 0.3636, 0.3483
Android (android.graphics.Color)	4292522401 (0xFFDAB1A1)
YUV	187.4350, -13.0325, 26.8055
Hunter-Lab	69.9449, 7.9239, 14.6566

Details

The RGB color **218, 177, 161** is a light color, and the websafe version is hex **CC9999**. A complement of this color would be **161, 202, 218**, and the grayscale version is **188, 188, 188**.

A 20% lighter version of the original color is **255, 233, 216**, and **162, 124, 109** is the 20% darker color. If you saturate the color by 10%, you get **218, 161, 139**, and if you desaturate by 10%, it is **218, 193, 183**.

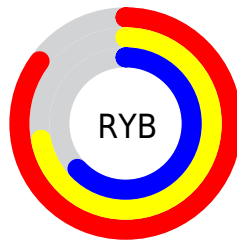
Distribution



Red (85%)

Green (69%)

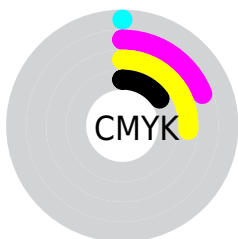
Blue (63%)



Red (85%)

Yellow (72%)

Blue (63%)

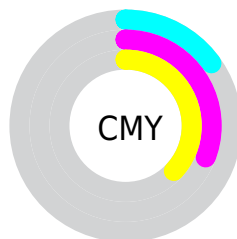


Cyan (0%)

Magenta (19%)

Yellow (26%)

Black (15%)



Cyan (15%)

Magenta (31%)

Yellow (37%)

Brightness & Saturation Gradients

These gradients show how the RGB color 218, 177, 161 changes by changing the brightness by 10 percent. The first figure shows a shift by +10% for each color and the second figure -10%.

Similar to the brightness gradients but the following saturation gradients show a change of the RGB color 218, 177, 161 by changing the saturation by 10% instead.


 218, 177, 161

 218, 177, 161

255, 255, 255

 190, 150, 135

 255, 233, 216


 162, 124, 109

 255, 255, 244

 135, 99, 85

 109, 75, 62

 84, 53, 40

 60, 31, 20

 38, 9, 0

 0, 0, 0

 218, 177, 161

 218, 177, 161

■ 218, 161, 139

■ 218, 193, 183

■ 218, 146, 117

■ 218, 208, 205

■ 218, 130, 96

■ 218, 224, 226

■ 218, 114, 74

■ 218, 240, 248

■ 218, 99, 52

■ 218, 255, 255

■ 218, 83, 30

■ 218, 67, 8

■ 218, 61, 0

Harmonies

Analogous

The Analogous color harmony consists of three colors that are next to each other on the color wheel.



222, 174, 176



218, 177, 161



206, 182, 153

Triad

The Triadic color harmony groups three colors that are evenly spaced from another and form a triangle on the color wheel.



218, 177, 161



151, 195, 178



180, 184, 218

Complementary

The Complementary color scheme is a pair of colors which are on the opposite of each other on the color wheel.



218, 177, 161



161, 202, 218

Split Complementary

Split-complementary colors differ from the complementary color scheme. The scheme consists of three colors, the original color and two neighbors of the complement color.



158, 189, 219



218, 177, 161



141, 196, 196

Square

The Square scheme is like the rectangle color scheme, but the four colors are evenly spaced on the color wheel.



218, 177, 161



169, 192, 162



143, 194, 210



201, 178, 209

Rectangle

The Rectangle color scheme consists of four colors that form a rectangle on the color wheel.



218, 177, 161



195, 186, 152



143, 194, 210



172, 186, 219

Sweetspot

The Sweet Spot groups the original color and five complimentary colors.



218, 177, 161



255, 240, 235



218, 161, 203



128, 118, 115



0, 0, 0



128, 128, 128

Same Dimension

The Same Dimension uses a secret algorithm to generate beautiful new colors.



218, 177, 161



255, 198, 176



218, 205, 161



110, 102, 99



173, 49, 0



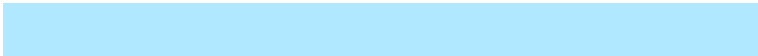
46, 13, 0

Inverse Universe

The Inverse Universe completely reimagines the original color for something new.



161, 202, 218



176, 233, 255



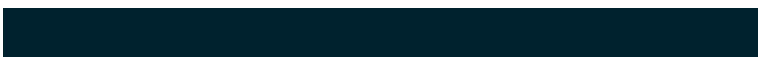
161, 174, 218



99, 107, 110



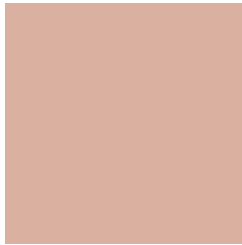
0, 125, 173



0, 33, 46

Previews

White Background



This preview shows how the RGB color 218, 177, 161 looks on a white background.

Color Contrast Check

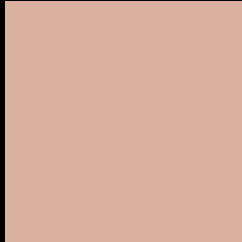
Large Text (above 18pt) WCAG AA × Fail

Any Text WCAG AA × Fail

Large Text (above 18pt) WCAG AAA × Fail

Any Text WCAG AAA × Fail

Black Background



This preview shows how the RGB color 218, 177, 161 looks on a black background.

Color Contrast Check

Large Text (above 18pt) WCAG AA ✓ Pass

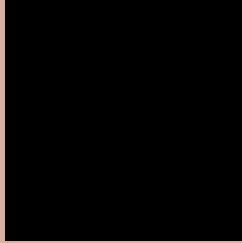
Any Text WCAG AA ✓ Pass

Large Text (above 18pt) WCAG AAA ✓ Pass

Any Text WCAG AAA ✓ Pass

If you want to check with other color combinations, try the [Color Contrast Checker](#).

RGB 218, 177, 161 Background



This preview shows how black text looks on a background with the RGB color 218, 177, 161.



This preview shows how white text looks on a background with the RGB color 218, 177, 161.

Color Blindness Simulation

Color vision deficiency is a very complex topic, and I could not describe the different causes any better than Wikipedia does, so if you want to learn more, you should check out their [article about color blindness](#).


Dichromacy



Original Color
218, 177, 161

Protanopia
194, 185, 165

Deuteranopia
213, 179, 161



Tritanopia
221, 173, 187

Trichromacy



Original Color

218, 177, 161

Protanomaly

203, 182, 164

Deuteranomaly

215, 178, 161

Tritanomaly

220, 174, 178

Monochromacy



Original Color

218, 177, 161

Achromatopsia

187, 187, 187

Achromatomaly

198, 183, 178

CSS Examples

Text

The CSS property to change the color of the text to RGB 218, 177, 161 is called "color". The color property can be set on classes, ids or directly on the HTML element.

This example shows how text in the color rgb(218, 177, 161) looks like.

```
.text, #text, p{  
    color:rgb(218, 177, 161)  
}
```

If you want to add a text shadow in that color use the text-shadow property, you can generate a text shadow directly with our [CSS Text Shadow Generator](#).

Here you see how black text with a 4 pixel rgb(218, 177, 161) colored shadow looks like.

```
.shadow{ text-shadow: 4px 4px 2px rgb(218, 177, 161) }
```

Border

The CSS property to change the border of an element to RGB 218, 177, 161 is called "border". The border property can be set on classes, ids or directly on the HTML element.

This example shows the color as border, it can be applied via the CSS property "border" or "border-color".

```
.border, #border, table{ border:4px solid rgb(218, 177, 161) }
```

If only the border color should be changed use the property border-color.

```
.border{ border-color:rgb(218, 177, 161) }
```

If you want to add a box shadow in that color use:

Here you see how a box with a 4 pixel rgb(218, 177, 161) colored shadow looks like.

```
.boxshadow{ -moz-box-shadow:4px 4px 4px  
4px rgb(218, 177, 161); -webkit-box-  
shadow:4px 4px 4px 4px rgb(218, 177, 161);  
box-shadow:4px 4px 4px 4px rgb(218, 177,  
161) }
```

Background

The CSS property to change the background color of an element to RGB 218, 177, 161 is called "background". The background property can be set on classes, ids or directly on the HTML element.

```
.background, #background, body{  
background: rgb(218, 177, 161) }
```

If only the background color should be changed can be used:

```
.background{ background-color: rgb(218,  
177, 161) }
```

This example shows the color as background, it is applied via the CSS property "background".

To optimize and compress your CSS code, you can use our [online CSS compressor and optimizer](#) based on csstidy. If you want to create a linear or radial gradient as background or border, check our [CSS Gradient Generator](#).

Hey! You found this booklet interesting? Support Converting Colors with the new Membership Option!

The pro membership hides all ads, plus gives you double the colors in the color bucket, and more awesome pro features!

[Learn more, Memberships starting at \\$2.50/m!](#)

**Follow me
on Twitter!**

@ConvertingColor