

Converting Colors

RGB(218, 196, 199)

Have a look what the booklet for
RGB(218, 196, 199) contains.

RGB(218, 196, 199)	3
<i>Conversions</i>	4
<i>Details</i>	6
<i>Harmonies</i>	11
<i>Previews</i>	23
<i>Color Blindness Simulation</i>	26
<i>CSS Examples</i>	29

Color

RGB(218, 196, 199)

Conversions

Conversions Part 1

Format	Color
Hex	DAC4C7
RGB	218, 196, 199
RGB Percent	85%, 77%, 78%
CMY	0.1451, 0.2314, 0.2196
CMYK	0.00, 0.10, 0.09, 0.15
HSL	352°, 23%, 81%
HSV	352°, 10%, 85%
XYZ	58.9622, 58.5088, 62.2185
YIQ	202.9200, 12.1490, 5.5970

Conversions

Conversions Part 2

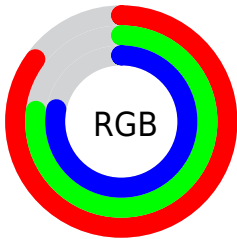
Format	Color
R _Y B	218, 196, 199
Decimal	14337223
CIE Lab	81.02, 8.24, 1.31
CIE LCh	81, 8.341, 9.052
Yxy	58.5088, 0.3281, 0.3256
Android (android.graphics.Color)	4292527303 (0xFFDAC4C7)
YUV	202.9200, -1.9326, 13.2252
Hunter-Lab	76.4910, 3.7352, 5.3167

Details

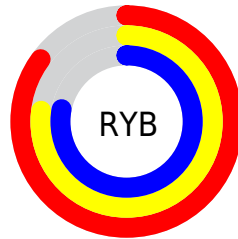
The RGB color **218, 196, 199** is a light color, and the websafe version is hex **CCCCCC**. A complement of this color would be **196, 218, 215**, and the grayscale version is **203, 203, 203**.

A 20% lighter version of the original color is **255, 253, 255**, and **163, 142, 145** is the 20% darker color. If you saturate the color by 10%, you get **218, 174, 180**, and if you desaturate by 10%, it is **218, 218, 218**.

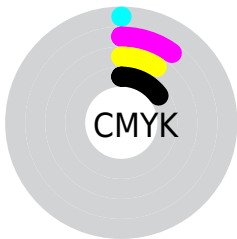
Distribution



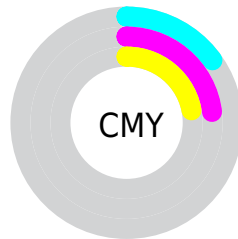
- Red (85%)
- Green (77%)
- Blue (78%)



- Red (85%)
- Yellow (77%)
- Blue (78%)



- Cyan (0%)
- Magenta (10%)
- Yellow (9%)
- Black (15%)



- Cyan (15%)
- Magenta (23%)
- Yellow (22%)

Brightness & Saturation Gradients

These gradients show how the RGB color 218, 196, 199 changes by changing the brightness by 10 percent. The first figure shows a shift by +10% for each color and the second figure -10%.


Similar to the brightness gradients but the following saturation gradients show a change of the RGB color 218, 196, 199 by changing the saturation by 10% instead.

 218, 196, 199

255, 255, 255


 255, 253, 255

 218, 196, 199

 190, 169, 172


 163, 142, 145

 137, 117, 120

 111, 92, 95

 87, 69, 71

 63, 46, 49


 41, 25, 28

 22, 0, 1

 0, 0, 0

 218, 196, 199

 218, 196, 199

 218, 174, 180

 218, 218, 218

 218, 152, 161


 218, 240, 237


 218, 131, 143


 218, 255, 255

 218, 109, 124

 218, 87, 105

 218, 65, 86

 218, 43, 67

 218, 22, 48

 218, 0, 30

Harmonies

Analogous

The Analogous color harmony consists of three colors that are next to each other on the color wheel.



214, 197, 207



218, 196, 199



218, 197, 192

Triad

The Triadic color harmony groups three colors that are evenly spaced from another and form a triangle on the color wheel.



218, 196, 199



196, 204, 189



188, 203, 215

Complementary

The Complementary color scheme is a pair of colors which are on the opposite of each other on the color wheel.



218, 196, 199



196, 218, 215

Split Complementary

Split-complementary colors differ from the complementary color scheme. The scheme consists of three colors, the original color and two neighbors of the complement color.



183, 205, 211



218, 196, 199



188, 205, 195

Square

The Square scheme is like the rectangle color scheme, but the four colors are evenly spaced on the color wheel.



218, 196, 199



205, 201, 186



183, 206, 203



196, 201, 216

Rectangle

The Rectangle color scheme consists of four colors that form a rectangle on the color wheel.



218, 196, 199



215, 198, 188



183, 206, 203



185, 204, 214

Sweetspot

The Sweet Spot groups the original color and five complimentary colors.



218, 196, 199



255, 247, 248



215, 196, 218



128, 122, 123



0, 0, 0



128, 128, 128

Same Dimension

The Same Dimension uses a secret algorithm to generate beautiful new colors.



218, 196, 199



255, 224, 229



218, 204, 196



110, 99, 100



173, 0, 24



46, 0, 6

Inverse Universe

The Inverse Universe completely reimagines the original color for something new.



218, 196, 199



255, 224, 229



196, 210, 218



110, 99, 100



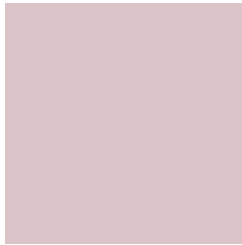
173, 0, 24



46, 0, 6

Previews

White Background



This preview shows how the RGB color 218, 196, 199 looks on a white background.

Color Contrast Check

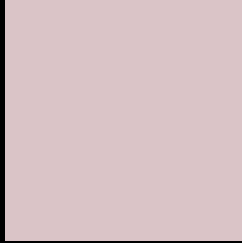
Large Text (above 18pt) WCAG AA × Fail

Any Text WCAG AA × Fail

Large Text (above 18pt) WCAG AAA × Fail

Any Text WCAG AAA × Fail

Black Background



This preview shows how the RGB color 218, 196, 199 looks on a black background.

Color Contrast Check

Large Text (above 18pt) WCAG AA ✓ Pass

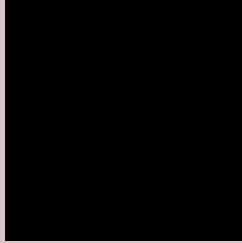
Any Text WCAG AA ✓ Pass

Large Text (above 18pt) WCAG AAA ✓ Pass

Any Text WCAG AAA ✓ Pass

If you want to check with other color combinations, try the [Color Contrast Checker](#).

RGB 218, 196, 199 Background



This preview shows how black text looks on a background with the RGB color 218, 196, 199.



This preview shows how white text looks on a background with the RGB color 218, 196, 199.

Color Blindness Simulation

Color vision deficiency is a very complex topic, and I could not describe the different causes any better than Wikipedia does, so if you want to learn more, you should check out their [article about color blindness](#).


Dichromacy



Original Color
218, 196, 199

Protanopia
205, 200, 201

Deuteranopia
221, 195, 199



Tritanopia
219, 194, 210

Trichromacy



Original Color

218, 196, 199

Protanomaly

210, 199, 200

Deuteranomaly

220, 195, 199

Tritanomaly

219, 195, 206

Monochromacy



Original Color

218, 196, 199

Achromatopsia

203, 203, 203

Achromatomaly

208, 200, 202

CSS Examples

Text

The CSS property to change the color of the text to RGB 218, 196, 199 is called "color". The color property can be set on classes, ids or directly on the HTML element.

This example shows how text in the color `rgb(218, 196, 199)` looks like.

```
.text, #text, p{  
    color:rgb(218, 196, 199)  
}
```

If you want to add a text shadow in that color use the text-shadow property, you can generate a text shadow directly with our [CSS Text Shadow Generator](#).

Here you see how black text with a 4 pixel rgb(218, 196, 199) colored shadow looks like.

```
.shadow{ text-shadow: 4px 4px 2px rgb(218, 196, 199) }
```

Border

The CSS property to change the border of an element to RGB 218, 196, 199 is called "border". The border property can be set on classes, ids or directly on the HTML element.

This example shows the color as border, it can be applied via the CSS property "border" or "border-color".

```
.border, #border, table{ border:4px solid rgb(218, 196, 199) }
```

If only the border color should be changed use the property `border-color`.

```
.border{ border-color:rgb(218, 196, 199) }
```

If you want to add a box shadow in that color use:

Here you see how a box with a 4 pixel `rgb(218, 196, 199)` colored shadow looks like.

```
.boxshadow{ -moz-box-shadow:4px 4px 4px  
4px rgb(218, 196, 199); -webkit-box-  
shadow:4px 4px 4px 4px rgb(218, 196, 199);  
box-shadow:4px 4px 4px 4px rgb(218, 196,  
199) }
```

Background

The CSS property to change the background color of an element to RGB 218, 196, 199 is called "background". The background property can be set on classes, ids or directly on the HTML element.

```
.background, #background, body{  
background: rgb(218, 196, 199) }
```

If only the background color should be changed can be used:

```
.background{ background-color: rgb(218,  
196, 199) }
```

This example shows the color as background, it is applied via the CSS property "background".

To optimize and compress your CSS code, you can use our [online CSS compressor and optimizer](#) based on csstidy. If you want to create a linear or radial gradient as background or border, check our [CSS Gradient Generator](#).

Hey! You found this booklet interesting? Support Converting Colors with the new Membership Option!

The pro membership hides all ads, plus gives you double the colors in the color bucket, and more awesome pro features!

[Learn more, Memberships starting at \\$2.50/m!](#)

**Follow me
on Twitter!**

@ConvertingColor