

Converting Colors

RGB(219, 108, 155)

Have a look what the booklet for
RGB(219, 108, 155) contains.

RGB(219, 108, 155)	3
<i>Conversions</i>	4
<i>Details</i>	6
<i>Harmonies</i>	11
<i>Previews</i>	23
<i>Color Blindness Simulation</i>	26
<i>CSS Examples</i>	29

Color

RGB(219, 108, 155)

Conversions

Conversions Part 1

Format	Color
Hex	DB6C9B
RGB	219, 108, 155
RGB Percent	86%, 42%, 61%
CMY	0.1412, 0.5765, 0.3922
CMYK	0.00, 0.51, 0.29, 0.14
HSL	335°, 61%, 64%
HSV	335°, 51%, 86%
XYZ	40.4924, 28.1518, 34.3100
YIQ	146.5470, 51.0690, 38.1490

Conversions

Conversions Part 2

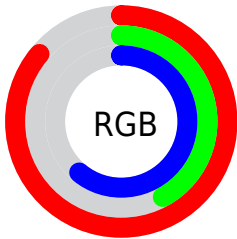
Format	Color
R _Y B	219, 108, 155
Decimal	14380187
CIE Lab	60.03, 48.53, -5.02
CIE LCh	60, 48.788, 354.095
Yxy	28.1518, 0.3933, 0.2734
Android (android.graphics.Color)	4292570267 (0xFFDB6C9B)
YUV	146.5470, 4.1673, 63.5413
Hunter-Lab	53.0582, 43.3737, -1.1990

Details

The RGB color **219, 108, 155** is a light color, and the websafe version is hex **CC6699**. A complement of this color would be **108, 219, 172**, and the grayscale version is **146, 146, 146**.

A 20% lighter version of the original color is **255, 162, 209**, and **161, 55, 104** is the 20% darker color. If you saturate the color by 10%, you get **219, 86, 142**, and if you desaturate by 10%, it is **219, 130, 168**.

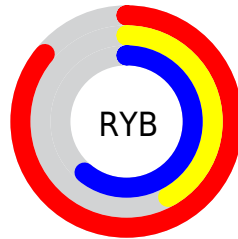
Distribution



Red (86%)

Green (42%)

Blue (61%)



Red (86%)

Yellow (42%)

Blue (61%)

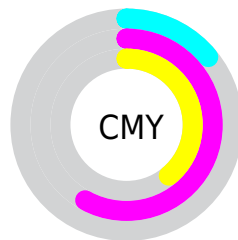


Cyan (0%)

Magenta (51%)

Yellow (29%)

Black (14%)



Cyan (14%)

Magenta (58%)

Yellow (39%)

Brightness & Saturation Gradients

These gradients show how the RGB color 219, 108, 155 changes by changing the brightness by 10 percent. The first figure shows a shift by +10% for each color and the second figure -10%.

Similar to the brightness gradients but the following saturation gradients show a change of the RGB color 219, 108, 155 by changing the saturation by 10% instead.


 219, 108, 155

 219, 108, 155

255, 255, 255

 190, 81, 129

 255, 162, 209

 161, 55, 104

 255, 190, 238

 133, 25, 80

 255, 219, 255

 105, 0, 57

 255, 248, 255

 78, 0, 36

 55, 0, 14

 14, 0, 0

 0, 0, 0

 219, 108, 155

 219, 108, 155

219, 86, 142

219, 130, 168

219, 64, 130

219, 152, 180

219, 42, 117

219, 174, 193

219, 20, 104

219, 196, 206

219, 0, 93

219, 218, 218

219, 239, 231

219, 255, 243

219, 255, 255

Harmonies

Analogous

The Analogous color harmony consists of three colors that are next to each other on the color wheel.



189, 120, 196



219, 108, 155



224, 110, 112

Triad

The Triadic color harmony groups three colors that are evenly spaced from another and form a triangle on the color wheel.



219, 108, 155



135, 153, 62



0, 162, 213

Complementary

The Complementary color scheme is a pair of colors which are on the opposite of each other on the color wheel.



219, 108, 155



108, 219, 172

Split Complementary

Split-complementary colors differ from the complementary color scheme. The scheme consists of three colors, the original color and two neighbors of the complement color.



0, 166, 178



219, 108, 155



82, 161, 92

Square

The Square scheme is like the rectangle color scheme, but the four colors are evenly spaced on the color wheel.



219, 108, 155



176, 139, 56



0, 166, 134



6, 152, 230

Rectangle

The Rectangle color scheme consists of four colors that form a rectangle on the color wheel.



219, 108, 155



215, 118, 87



0, 166, 134



0, 164, 203

Sweetspot

The Sweet Spot groups the original color and five complimentary colors.



219, 108, 155



255, 217, 233



171, 108, 219



128, 105, 114



0, 0, 0



128, 128, 128

Same Dimension

The Same Dimension uses a secret algorithm to generate beautiful new colors.



219, 108, 155



255, 99, 165



219, 115, 108



110, 99, 103



173, 0, 73



46, 0, 19

Inverse Universe

The Inverse Universe completely reimagines the original color for something new.



219, 108, 155



255, 99, 165



108, 212, 219



110, 99, 103



173, 0, 73



46, 0, 19

Previews

White Background



This preview shows how the RGB color 219, 108, 155 looks on a white background.

Color Contrast Check

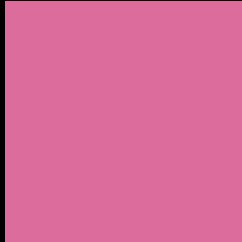
Large Text (above 18pt) WCAG AA ✓ Pass

Any Text WCAG AA ✗ Fail

Large Text (above 18pt) WCAG AAA ✗ Fail

Any Text WCAG AAA ✗ Fail

Black Background



This preview shows how the RGB color 219, 108, 155 looks on a black background.

Color Contrast Check

Large Text (above 18pt) WCAG AA ✓ Pass

Any Text WCAG AA ✓ Pass

Large Text (above 18pt) WCAG AAA ✓ Pass

Any Text WCAG AAA × Fail

If you want to check with other color combinations, try the [Color Contrast Checker](#).

RGB 219, 108, 155 Background



This preview shows how black text looks on a background with the RGB color 219, 108, 155.

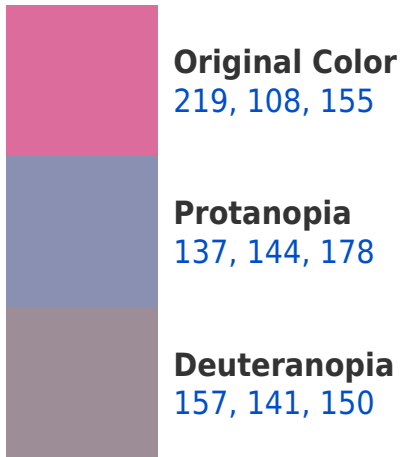


This preview shows how white text looks on a background with the RGB color 219, 108, 155.

Color Blindness Simulation

Color vision deficiency is a very complex topic, and I could not describe the different causes any better than Wikipedia does, so if you want to learn more, you should check out their [article about color blindness](#).

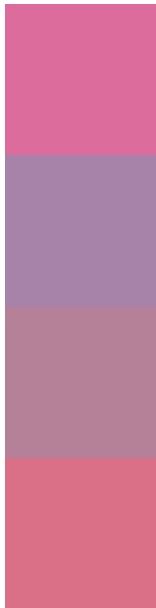
Dichromacy





Tritanopia
216, 114, 123

Trichromacy



Original Color
219, 108, 155

Protanomaly
167, 131, 170

Deuteranomaly
180, 129, 152

Tritanomaly
217, 112, 135

Monochromacy



Original Color
219, 108, 155

Achromatopsia
147, 147, 147

Achromatomaly
173, 133, 150

CSS Examples

Text

The CSS property to change the color of the text to RGB 219, 108, 155 is called "color". The color property can be set on classes, ids or directly on the HTML element.

This example shows how text in the color rgb(219, 108, 155) looks like.

```
.text, #text, p{  
    color:rgb(219, 108, 155)  
}
```

If you want to add a text shadow in that color use the text-shadow property, you can generate a text shadow directly with our [CSS Text Shadow Generator](#).

Here you see how black text with a 4 pixel rgb(219, 108, 155) colored shadow looks like.

```
.shadow{ text-shadow: 4px 4px 2px rgb(219, 108, 155) }
```

Border

The CSS property to change the border of an element to RGB 219, 108, 155 is called "border". The border property can be set on classes, ids or directly on the HTML element.

This example shows the color as border, it can be applied via the CSS property "border" or "border-color".

```
.border, #border, table{ border:4px solid rgb(219, 108, 155) }
```

If only the border color should be changed use the property `border-color`.

```
.border{ border-color:rgb(219, 108, 155) }
```

If you want to add a box shadow in that color use:

Here you see how a box with a 4 pixel `rgb(219, 108, 155)` colored shadow looks like.

```
.boxshadow{ -moz-box-shadow:4px 4px 4px 4px rgb(219, 108, 155); -webkit-box-shadow:4px 4px 4px 4px rgb(219, 108, 155); box-shadow:4px 4px 4px 4px rgb(219, 108, 155) }
```

Background

The CSS property to change the background color of an element to RGB 219, 108, 155 is called "background". The background property can be set on classes, ids or directly on the HTML element.

```
.background, #background, body{  
background: rgb(219, 108, 155) }
```

If only the background color should be changed can be used:

```
.background{ background-color: rgb(219,  
108, 155) }
```

This example shows the color as background, it is applied via the CSS property "background".

To optimize and compress your CSS code, you can use our [online CSS compressor and optimizer](#) based on csstidy. If you want to create a linear or radial gradient as background or border, check our [CSS Gradient Generator](#).

Hey! You found this booklet interesting? Support Converting Colors with the new Membership Option!

The pro membership hides all ads, plus gives you double the colors in the color bucket, and more awesome pro features!

[Learn more, Memberships starting at \\$2.50/m!](#)

**Follow me
on Twitter!**

@ConvertingColor