

Converting Colors

RGB(219, 169, 155)

Have a look what the booklet for
RGB(219, 169, 155) contains.

RGB(219, 169, 155)	3
<i>Conversions</i>	4
<i>Details</i>	6
<i>Harmonies</i>	11
<i>Previews</i>	23
<i>Color Blindness Simulation</i>	26
<i>CSS Examples</i>	29

Color

RGB(219, 169, 155)

Conversions

Conversions Part 1

Format	Color
Hex	DBA99B
RGB	219, 169, 155
RGB Percent	86%, 66%, 61%
CMY	0.1412, 0.3373, 0.3922
CMYK	0.00, 0.23, 0.29, 0.14
HSL	13°, 47%, 73%
HSV	13°, 29%, 86%
XYZ	49.3178, 45.8026, 37.2518
YIQ	182.3540, 34.2940, 6.2460

Conversions

Conversions Part 2

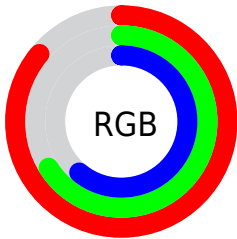
Format	Color
R_{YB}	219, 173, 155
Decimal	14395803
CIE _{Lab}	73.42, 16.36, 14.29
CIE _{LCh}	73, 21.723, 41.122
Yxy	45.8026, 0.3726, 0.3460
Android (android.graphics.Color)	4292585883 (0xFFDBA99B)
YUV	182.3540, -13.4855, 32.1385
Hunter-Lab	67.6776, 11.6401, 14.7393

Details

The RGB color **219, 169, 155** is a light color, and the websafe version is hex **CC9999**. A complement of this color would be **155, 205, 219**, and the grayscale version is **182, 182, 182**.

A 20% lighter version of the original color is **255, 224, 209**, and **163, 117, 104** is the 20% darker color. If you saturate the color by 10%, you get **219, 152, 133**, and if you desaturate by 10%, it is **219, 186, 177**.

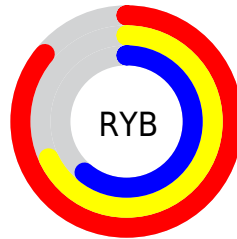
Distribution



Red (86%)

Green (66%)

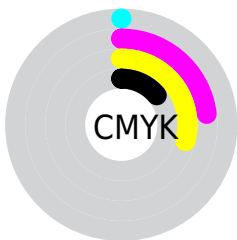
Blue (61%)



Red (86%)

Yellow (68%)

Blue (61%)

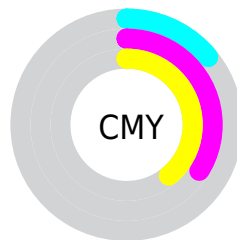


Cyan (0%)

Magenta (23%)

Yellow (29%)

Black (14%)



Cyan (14%)

Magenta (34%)

Yellow (39%)

Brightness & Saturation Gradients

These gradients show how the RGB color 219, 169, 155 changes by changing the brightness by 10 percent. The first figure shows a shift by +10% for each color and the second figure -10%.


Similar to the brightness gradients but the following saturation gradients show a change of the RGB color 219, 169, 155 by changing the saturation by 10% instead.


 219, 169, 155

255, 255, 255

 255, 224, 209

 255, 253, 238

 219, 169, 155

 191, 142, 129

 163, 117, 104

 136, 92, 80

 109, 68, 57

 84, 46, 35

 59, 24, 14

 37, 0, 0

 0, 0, 0

 219, 169, 155

 219, 169, 155

■ 219, 152, 133

■ 219, 186, 177

■ 219, 135, 111

■ 219, 203, 199

■ 219, 118, 89

■ 219, 220, 221

■ 219, 101, 67

■ 219, 237, 243

■ 219, 83, 45

■ 219, 255, 255

■ 219, 66, 24

■ 219, 255, 255

■ 219, 49, 2

■ 219, 48, 0

Harmonies

Analogous

The Analogous color harmony consists of three colors that are next to each other on the color wheel.



221, 166, 173



219, 169, 155



207, 175, 143

Triad

The Triadic color harmony groups three colors that are evenly spaced from another and form a triangle on the color wheel.



219, 169, 155



143, 191, 167



167, 180, 219

Complementary

The Complementary color scheme is a pair of colors which are on the opposite of each other on the color wheel.



219, 169, 155



155, 205, 219

Split Complementary

Split-complementary colors differ from the complementary color scheme. The scheme consists of three colors, the original color and two neighbors of the complement color.



142, 186, 217



219, 169, 155



128, 192, 187

Square

The Square scheme is like the rectangle color scheme, but the four colors are evenly spaced on the color wheel.



219, 169, 155



165, 187, 150



126, 190, 206



193, 173, 210

Rectangle

The Rectangle color scheme consists of four colors that form a rectangle on the color wheel.



219, 169, 155



195, 179, 141



126, 190, 206



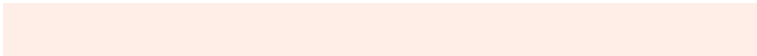
158, 182, 220

Sweetspot

The Sweet Spot groups the original color and five complimentary colors.



219, 169, 155



255, 237, 232



219, 155, 205



128, 117, 113



0, 0, 0



128, 128, 128

Same Dimension

The Same Dimension uses a secret algorithm to generate beautiful new colors.



219, 169, 155



255, 185, 166



219, 201, 155



110, 101, 99



173, 38, 0



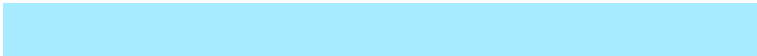
46, 10, 0

Inverse Universe

The Inverse Universe completely reimagines the original color for something new.



155, 205, 219



166, 235, 255



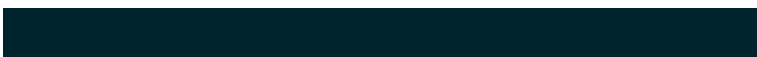
155, 173, 219



99, 107, 110



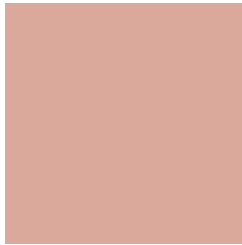
0, 135, 173



0, 36, 46

Previews

White Background



This preview shows how the RGB color 219, 169, 155 looks on a white background.

Color Contrast Check

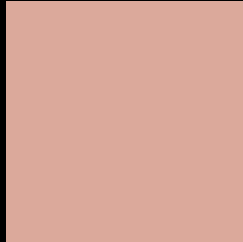
Large Text (above 18pt) WCAG AA × Fail

Any Text WCAG AA × Fail

Large Text (above 18pt) WCAG AAA × Fail

Any Text WCAG AAA × Fail

Black Background



This preview shows how the RGB color 219, 169, 155 looks on a black background.

Color Contrast Check

Large Text (above 18pt) WCAG AA ✓ Pass

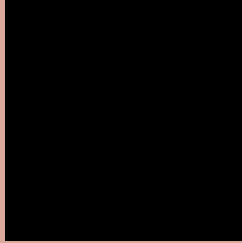
Any Text WCAG AA ✓ Pass

Large Text (above 18pt) WCAG AAA ✓ Pass

Any Text WCAG AAA ✓ Pass

If you want to check with other color combinations, try the [Color Contrast Checker](#).

RGB 219, 169, 155 Background



This preview shows how black text looks on a background with the RGB color 219, 169, 155.

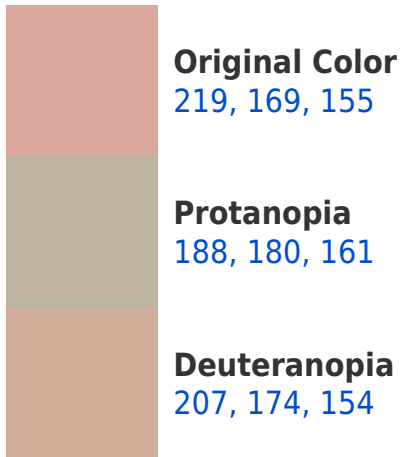


This preview shows how white text looks on a background with the RGB color 219, 169, 155.

Color Blindness Simulation

Color vision deficiency is a very complex topic, and I could not describe the different causes any better than Wikipedia does, so if you want to learn more, you should check out their [article about color blindness](#).

Dichromacy





Tritanopia
222, 166, 178

Trichromacy



Original Color
219, 169, 155

Protanomaly
199, 176, 159

Deuteranomaly
211, 172, 154

Tritanomaly
221, 167, 170

Monochromacy



Original Color
219, 169, 155

Achromatopsia
182, 182, 182

Achromatomaly
195, 177, 172

CSS Examples

Text

The CSS property to change the color of the text to RGB 219, 169, 155 is called "color". The color property can be set on classes, ids or directly on the HTML element.

This example shows how text in the color rgb(219, 169, 155) looks like.

```
.text, #text, p{  
    color:rgb(219, 169, 155)  
}
```

If you want to add a text shadow in that color use the text-shadow property, you can generate a text shadow directly with our [CSS Text Shadow Generator](#).

Here you see how black text with a 4 pixel rgb(219, 169, 155) colored shadow looks like.

```
.shadow{ text-shadow: 4px 4px 2px rgb(219, 169, 155) }
```

Border

The CSS property to change the border of an element to RGB 219, 169, 155 is called "border". The border property can be set on classes, ids or directly on the HTML element.

This example shows the color as border, it can be applied via the CSS property "border" or "border-color".

```
.border, #border, table{ border:4px solid rgb(219, 169, 155) }
```

If only the border color should be changed use the property `border-color`.

```
.border{ border-color:rgb(219, 169, 155) }
```

If you want to add a box shadow in that color use:

Here you see how a box with a 4 pixel `rgb(219, 169, 155)` colored shadow looks like.

```
.boxshadow{ -moz-box-shadow:4px 4px 4px 4px rgb(219, 169, 155); -webkit-box-shadow:4px 4px 4px 4px rgb(219, 169, 155); box-shadow:4px 4px 4px 4px rgb(219, 169, 155) }
```

Background

The CSS property to change the background color of an element to RGB 219, 169, 155 is called "background". The background property can be set on classes, ids or directly on the HTML element.

```
.background, #background, body{  
background: rgb(219, 169, 155) }
```

If only the background color should be changed can be used:

```
.background{ background-color: rgb(219,  
169, 155) }
```

This example shows the color as background, it is applied via the CSS property "background".

To optimize and compress your CSS code, you can use our [online CSS compressor and optimizer](#) based on csstidy. If you want to create a linear or radial gradient as background or border, check our [CSS Gradient Generator](#).

Hey! You found this booklet interesting? Support Converting Colors with the new Membership Option!

The pro membership hides all ads, plus gives you double the colors in the color bucket, and more awesome pro features!

[Learn more, Memberships starting at \\$2.50/m!](#)

**Follow me
on Twitter!**

@ConvertingColor