

Converting Colors

RGB(219, 175, 138)

Have a look what the booklet for
RGB(219, 175, 138) contains.

RGB(219, 175, 138)	3
<i>Conversions</i>	4
<i>Details</i>	6
<i>Harmonies</i>	11
<i>Previews</i>	23
<i>Color Blindness Simulation</i>	26
<i>CSS Examples</i>	29

Color

RGB(219, 175, 138)

Conversions

Conversions Part 1

Format	Color
Hex	DBAF8A
RGB	219, 175, 138
RGB Percent	86%, 69%, 54%
CMY	0.1412, 0.3137, 0.4588
CMYK	0.00, 0.20, 0.37, 0.14
HSL	27°, 53%, 70%
HSV	27°, 37%, 86%
XYZ	49.1308, 47.5550, 30.6343
YIQ	183.9380, 38.1010, -2.1790

Conversions

Conversions Part 2

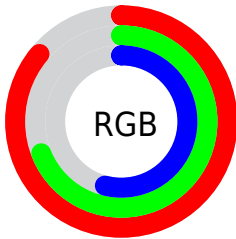
Format	Color
RYB	219, 206, 138
Decimal	14397322
CIELab	74.54, 11.00, 25.06
CIElCh	75, 27.365, 66.295
Yxy	47.5550, 0.3859, 0.3735
Android (android.graphics.Color)	4292587402 (0xFFDBAF8A)
YUV	183.9380, -22.6474, 30.7494
Hunter-Lab	68.9601, 6.4926, 21.9336

Details

The RGB color **219, 175, 138** is a light color, and the websafe version is hex **CC9966**. A complement of this color would be **138, 182, 219**, and the grayscale version is **184, 184, 184**.

A 20% lighter version of the original color is **255, 231, 192**, and **163, 123, 88** is the 20% darker color. If you saturate the color by 10%, you get **219, 163, 116**, and if you desaturate by 10%, it is **219, 187, 160**.

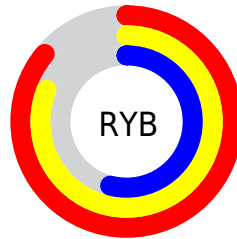
Distribution



Red (86%)

Green (69%)

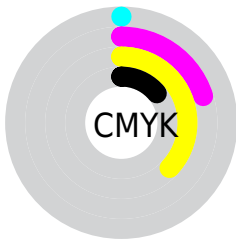
Blue (54%)



Red (86%)

Yellow (81%)

Blue (54%)

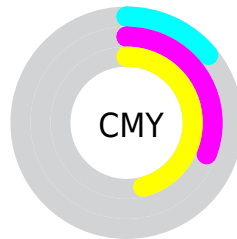


Cyan (0%)

Magenta (20%)

Yellow (37%)

Black (14%)



Cyan (14%)

Magenta (31%)


Yellow (46%)

Brightness & Saturation Gradients


These gradients show how the RGB color 219, 175, 138 changes by changing the brightness by 10 percent. The first figure shows a shift by +10% for each color and the second figure -10%.

Similar to the brightness gradients but the following saturation gradients show a change of the RGB color 219, 175, 138 by changing the saturation by 10% instead.


 219, 175, 138

 219, 175, 138

255, 255, 255

 190, 148, 112

 255, 231, 192

 163, 123, 88

 255, 255, 220

 135, 98, 64

 255, 255, 248

 109, 74, 41


 83, 51, 20

 59, 30, 0

 35, 7, 0

 0, 0, 0

 219, 175, 138

 219, 175, 138

 219, 163, 116


 219, 187, 160

 219, 151, 94

 219, 199, 182

 219, 139, 72


 219, 211, 204

 219, 127, 50


 219, 223, 226

 219, 116, 28

 219, 234, 248

 219, 104, 7

 219, 246, 255

 219, 100, 0

 219, 255, 255

Harmonies

Analogous

The Analogous color harmony consists of three colors that are next to each other on the color wheel.



232, 168, 155



219, 175, 138



196, 183, 133

Triad

The Triadic color harmony groups three colors that are evenly spaced from another and form a triangle on the color wheel.



219, 175, 138



116, 198, 188



194, 175, 224

Complementary

The Complementary color scheme is a pair of colors which are on the opposite of each other on the color wheel.



219, 175, 138



138, 182, 219

Split Complementary

Split-complementary colors differ from the complementary color scheme. The scheme consists of three colors, the original color and two neighbors of the complement color.



160, 184, 233



219, 175, 138



109, 196, 212

Square

The Square scheme is like the rectangle color scheme, but the four colors are evenly spaced on the color wheel.



219, 175, 138



140, 196, 162



126, 191, 229



220, 168, 204

Rectangle

The Rectangle color scheme consists of four colors that form a rectangle on the color wheel.



219, 175, 138



178, 189, 138



126, 191, 229



183, 178, 228

Sweetspot

The Sweet Spot groups the original color and five complimentary colors.



219, 175, 138



255, 240, 227



219, 138, 183



128, 118, 111



0, 0, 0



128, 128, 128

Same Dimension

The Same Dimension uses a secret algorithm to generate beautiful new colors.



219, 175, 138



255, 194, 143



219, 215, 138



110, 104, 99



173, 79, 0



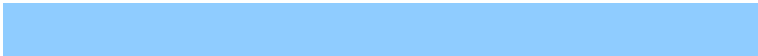
46, 21, 0

Inverse Universe

The Inverse Universe completely reimagines the original color for something new.



138, 182, 219



143, 204, 255



138, 142, 219



99, 105, 110



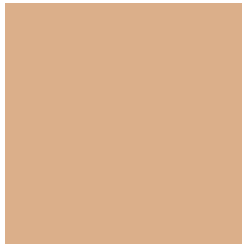
0, 94, 173



0, 25, 46

Previews

White Background



This preview shows how the RGB color 219, 175, 138 looks on a white background.

Color Contrast Check

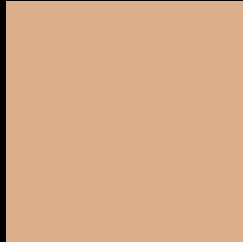
Large Text (above 18pt) WCAG AA × Fail

Any Text WCAG AA × Fail

Large Text (above 18pt) WCAG AAA × Fail

Any Text WCAG AAA × Fail

Black Background



This preview shows how the RGB color 219, 175, 138 looks on a black background.

Color Contrast Check

Large Text (above 18pt) WCAG AA ✓ Pass

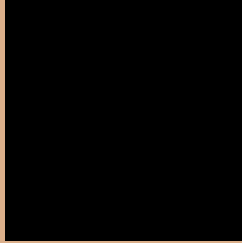
Any Text WCAG AA ✓ Pass

Large Text (above 18pt) WCAG AAA ✓ Pass

Any Text WCAG AAA ✓ Pass

If you want to check with other color combinations, try the [Color Contrast Checker](#).

RGB 219, 175, 138 Background



This preview shows how black text looks on a background with the RGB color 219, 175, 138.

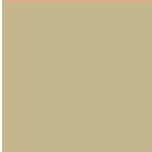


This preview shows how white text looks on a background with the RGB color 219, 175, 138.

Color Blindness Simulation

Color vision deficiency is a very complex topic, and I could not describe the different causes any better than Wikipedia does, so if you want to learn more, you should check out their [article about color blindness](#).

Dichromacy

	Original Color 219, 175, 138
	Protanopia 196, 183, 142
	Deuteranopia 216, 176, 138



Tritanopia
224, 169, 182

Trichromacy



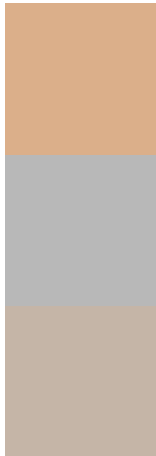
Original Color
219, 175, 138

Protanomaly
204, 180, 141

Deuteranomaly
217, 176, 138

Tritanomaly
222, 171, 166

Monochromacy



Original Color
219, 175, 138

Achromatopsia
184, 184, 184

Achromatomaly
197, 181, 167

CSS Examples

Text

The CSS property to change the color of the text to RGB 219, 175, 138 is called "color". The color property can be set on classes, ids or directly on the HTML element.

This example shows how text in the color `rgb(219, 175, 138)` looks like.

```
.text, #text, p{  
    color:rgb(219, 175, 138)  
}
```

If you want to add a text shadow in that color use the text-shadow property, you can generate a text shadow directly with our [CSS Text Shadow Generator](#).

Here you see how black text with a 4 pixel rgb(219, 175, 138) colored shadow looks like.

```
.shadow{ text-shadow: 4px 4px 2px rgb(219, 175, 138) }
```

Border

The CSS property to change the border of an element to RGB 219, 175, 138 is called "border". The border property can be set on classes, ids or directly on the HTML element.

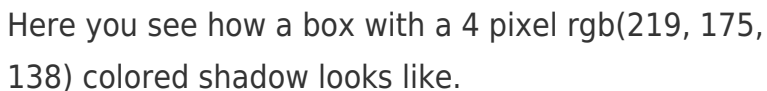
This example shows the color as border, it can be applied via the CSS property "border" or "border-color".

```
.border, #border, table{ border:4px solid rgb(219, 175, 138) }
```

If only the border color should be changed use the property `border-color`.

```
.border{ border-color:rgb(219, 175, 138) }
```

If you want to add a box shadow in that color use:



Here you see how a box with a 4 pixel `rgb(219, 175, 138)` colored shadow looks like.

```
.boxshadow{ -moz-box-shadow:4px 4px 4px 4px rgb(219, 175, 138); -webkit-box-shadow:4px 4px 4px 4px rgb(219, 175, 138); box-shadow:4px 4px 4px 4px rgb(219, 175, 138) }
```

Background

The CSS property to change the background color of an element to RGB 219, 175, 138 is called "background". The background property can be set on classes, ids or directly on the HTML element.

```
.background, #background, body{  
background: rgb(219, 175, 138) }
```

If only the background color should be changed can be used:

```
.background{ background-color: rgb(219,  
175, 138) }
```

This example shows the color as background, it is applied via the CSS property "background".

To optimize and compress your CSS code, you can use our [online CSS compressor and optimizer](#) based on csstidy. If you want to create a linear or radial gradient as background or border, check our [CSS Gradient Generator](#).

Hey! You found this booklet interesting? Support Converting Colors with the new Membership Option!

The pro membership hides all ads, plus gives you double the colors in the color bucket, and more awesome pro features!

[Learn more, Memberships starting at \\$2.50/m!](#)

**Follow me
on Twitter!**

@ConvertingColor