

Converting Colors

RGB(219, 177, 137)

Have a look what the booklet for
RGB(219, 177, 137) contains.

RGB(219, 177, 137)	3
<i>Conversions</i>	4
<i>Details</i>	6
<i>Harmonies</i>	11
<i>Previews</i>	23
<i>Color Blindness Simulation</i>	26
<i>CSS Examples</i>	29

Color

RGB(219, 177, 137)

Conversions

Conversions Part 1

Format	Color
Hex	DBB189
RGB	219, 177, 137
RGB Percent	86%, 69%, 54%
CMY	0.1412, 0.3059, 0.4627
CMYK	0.00, 0.19, 0.37, 0.14
HSL	29°, 53%, 70%
HSV	29°, 37%, 86%
XYZ	49.4509, 48.3105, 30.3854
YIQ	184.9980, 37.8720, -3.5360

Conversions

Conversions Part 2

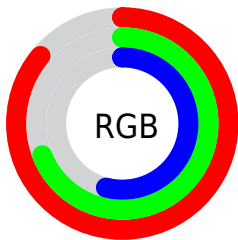
Format	Color
R_{YB}	219, 215, 137
Decimal	14397833
CIE _{Lab}	75.02, 9.82, 26.23
CIE _{LCh}	75, 28.011, 69.488
Yxy	48.3105, 0.3859, 0.3770
Android (android.graphics.Color)	4292587913 (0xFFDDBB189)
YUV	184.9980, -23.6630, 29.8198
Hunter-Lab	69.5058, 5.3615, 22.7346

Details

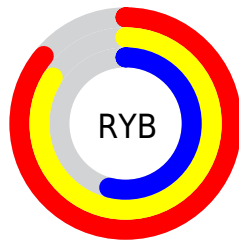
The RGB color **219, 177, 137** is a light color, and the websafe version is hex **CC9966**. A complement of this color would be **137, 179, 219**, and the grayscale version is **185, 185, 185**.

A 20% lighter version of the original color is **255, 233, 191**, and **163, 124, 87** is the 20% darker color. If you saturate the color by 10%, you get **219, 166, 115**, and if you desaturate by 10%, it is **219, 188, 159**.

Distribution



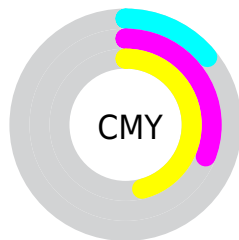
- Red (86%)
- Green (69%)
- Blue (54%)



- Red (86%)
- Yellow (84%)
- Blue (54%)



- Cyan (0%)
- Magenta (19%)
- Yellow (37%)
- Black (14%)



- Cyan (14%)
- Magenta (31%)
- Yellow (46%)

Brightness & Saturation Gradients

These gradients show how the RGB color 219, 177, 137 changes by changing the brightness by 10 percent. The first figure shows a shift by +10% for each color and the second figure -10%.

Similar to the brightness gradients but the following saturation gradients show a change of the RGB color 219, 177, 137 by changing the saturation by 10% instead.

 219, 177, 137

255, 255, 255


 255, 233, 191


 255, 255, 219

 255, 255, 247

 219, 177, 137

 190, 150, 111

 163, 124, 87

 135, 100, 63

 109, 76, 40

 83, 53, 19

 59, 32, 0

 34, 10, 0

 0, 0, 0

 219, 177, 137

 219, 177, 137

 219, 166, 115


 219, 188, 159

 219, 155, 93

 219, 199, 181

 219, 143, 71


 219, 211, 203

 219, 132, 49


 219, 222, 225

 219, 121, 27

 219, 233, 247

 219, 110, 6

 219, 244, 255

 219, 107, 0

 219, 255, 255

Harmonies

Analogous

The Analogous color harmony consists of three colors that are next to each other on the color wheel.



234, 169, 153



219, 177, 137



195, 186, 134

Triad

The Triadic color harmony groups three colors that are evenly spaced from another and form a triangle on the color wheel.



219, 177, 137



113, 199, 192



199, 175, 225

Complementary

The Complementary color scheme is a pair of colors which are on the opposite of each other on the color wheel.



219, 177, 137



137, 179, 219

Split Complementary

Split-complementary colors differ from the complementary color scheme. The scheme consists of three colors, the original color and two neighbors of the complement color.



164, 184, 235



219, 177, 137



108, 197, 217

Square

The Square scheme is like the rectangle color scheme, but the four colors are evenly spaced on the color wheel.



219, 177, 137



137, 198, 166



129, 192, 232



225, 168, 203

Rectangle

The Rectangle color scheme consists of four colors that form a rectangle on the color wheel.



219, 177, 137



176, 191, 139



129, 192, 232



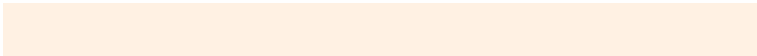
188, 178, 229

Sweetspot

The Sweet Spot groups the original color and five complimentary colors.



219, 177, 137



255, 241, 227



219, 137, 179



128, 119, 111



0, 0, 0



128, 128, 128

Same Dimension

The Same Dimension uses a secret algorithm to generate beautiful new colors.



219, 177, 137



255, 196, 140



219, 218, 137



110, 104, 99



173, 85, 0



46, 22, 0

Inverse Universe

The Inverse Universe completely reimagines the original color for something new.



137, 179, 219



140, 199, 255



137, 138, 219



99, 104, 110



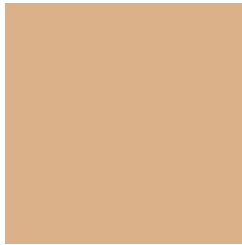
0, 89, 173



0, 24, 46

Previews

White Background



This preview shows how the RGB color 219, 177, 137 looks on a white background.

Color Contrast Check

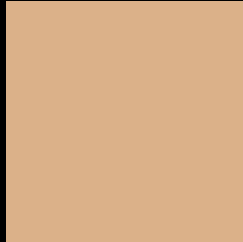
Large Text (above 18pt) WCAG AA × Fail

Any Text WCAG AA × Fail

Large Text (above 18pt) WCAG AAA × Fail

Any Text WCAG AAA × Fail

Black Background



This preview shows how the RGB color 219, 177, 137 looks on a black background.

Color Contrast Check

Large Text (above 18pt) WCAG AA ✓ Pass

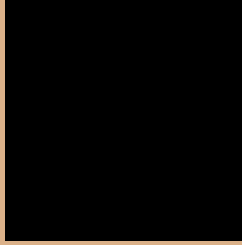
Any Text WCAG AA ✓ Pass

Large Text (above 18pt) WCAG AAA ✓ Pass

Any Text WCAG AAA ✓ Pass

If you want to check with other color combinations, try the [Color Contrast Checker](#).

RGB 219, 177, 137 Background



This preview shows how black text looks on a background with the RGB color 219, 177, 137.



This preview shows how white text looks on a background with the RGB color 219, 177, 137.

Color Blindness Simulation

Color vision deficiency is a very complex topic, and I could not describe the different causes any better than Wikipedia does, so if you want to learn more, you should check out their [article about color blindness](#).


Dichromacy



Original Color
219, 177, 137

Protanopia
198, 185, 140

Deuteranopia
218, 177, 137



Tritanopia
224, 171, 184

Trichromacy



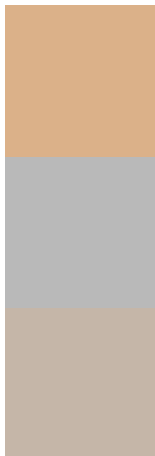
Original Color
219, 177, 137

Protanomaly
206, 182, 139

Deuteranomaly
218, 177, 137

Tritanomaly
222, 173, 167

Monochromacy



Original Color
219, 177, 137

Achromatopsia
185, 185, 185

Achromatomaly
197, 182, 168

CSS Examples

Text

The CSS property to change the color of the text to RGB 219, 177, 137 is called "color". The color property can be set on classes, ids or directly on the HTML element.

This example shows how text in the color `rgb(219, 177, 137)` looks like.

```
.text, #text, p{  
    color:rgb(219, 177, 137)  
}
```

If you want to add a text shadow in that color use the text-shadow property, you can generate a text shadow directly with our [CSS Text Shadow Generator](#).

Here you see how black text with a 4 pixel rgb(219, 177, 137) colored shadow looks like.

```
.shadow{ text-shadow: 4px 4px 2px rgb(219, 177, 137) }
```

Border

The CSS property to change the border of an element to RGB 219, 177, 137 is called "border". The border property can be set on classes, ids or directly on the HTML element.

This example shows the color as border, it can be applied via the CSS property "border" or "border-color".

```
.border, #border, table{ border:4px solid rgb(219, 177, 137) }
```

If only the border color should be changed use the property `border-color`.

```
.border{ border-color:rgb(219, 177, 137) }
```

If you want to add a box shadow in that color use:

Here you see how a box with a 4 pixel `rgb(219, 177, 137)` colored shadow looks like.

```
.boxshadow{ -moz-box-shadow:4px 4px 4px  
4px rgb(219, 177, 137); -webkit-box-  
shadow:4px 4px 4px 4px rgb(219, 177, 137);  
box-shadow:4px 4px 4px 4px rgb(219, 177,  
137) }
```

Background

The CSS property to change the background color of an element to RGB 219, 177, 137 is called "background". The background property can be set on classes, ids or directly on the HTML element.

```
.background, #background, body{  
background: rgb(219, 177, 137) }
```

If only the background color should be changed can be used:

```
.background{ background-color: rgb(219,  
177, 137) }
```

This example shows the color as background, it is applied via the CSS property "background".

To optimize and compress your CSS code, you can use our [online CSS compressor and optimizer](#) based on csstidy. If you want to create a linear or radial gradient as background or border, check our [CSS Gradient Generator](#).

Hey! You found this booklet interesting? Support Converting Colors with the new Membership Option!

The pro membership hides all ads, plus gives you double the colors in the color bucket, and more awesome pro features!

[Learn more, Memberships starting at \\$2.50/m!](#)

**Follow me
on Twitter!**

@ConvertingColor