

Converting Colors

RGB(219, 187, 163)

Have a look what the booklet for
RGB(219, 187, 163) contains.

RGB(219, 187, 163)	3
<i>Conversions</i>	4
<i>Details</i>	6
<i>Harmonies</i>	11
<i>Previews</i>	23
<i>Color Blindness Simulation</i>	26
<i>CSS Examples</i>	29

Color

RGB(219, 187, 163)

Conversions

Conversions Part 1

Format	Color
Hex	DBBBA3
RGB	219, 187, 163
RGB Percent	86%, 73%, 64%
CMY	0.1412, 0.2667, 0.3608
CMYK	0.00, 0.15, 0.26, 0.14
HSL	26°, 44%, 75%
HSV	26°, 26%, 86%
XYZ	53.5946, 53.2451, 42.1029
YIQ	193.8320, 26.7760, -0.6800

Conversions

Conversions Part 2

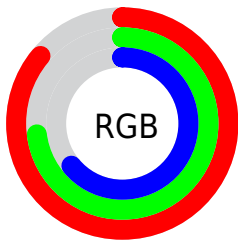
Format	Color
R_{YB}	219, 205, 163
Decimal	14400419
CIE _{Lab}	78.02, 7.82, 16.40
CIE _{LCh}	78, 18.165, 64.499
Yxy	53.2451, 0.3598, 0.3575
Android (android.graphics.Color)	4292590499 (0xFFDDBBA3)
YUV	193.8320, -15.2002, 22.0723
Hunter-Lab	72.9692, 3.4090, 16.8684

Details

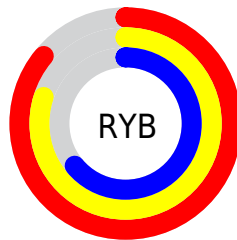
The RGB color **219, 187, 163** is a light color, and the websafe version is hex **FFCCCC**. A complement of this color would be **163, 195, 219**, and the grayscale version is **194, 194, 194**.

A 20% lighter version of the original color is **255, 243, 218**, and **163, 134, 111** is the 20% darker color. If you saturate the color by 10%, you get **219, 174, 141**, and if you desaturate by 10%, it is **219, 200, 185**.

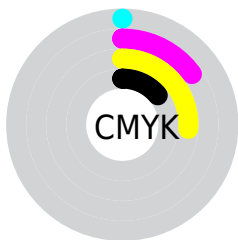
Distribution



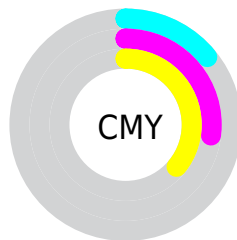
- Red (86%)
- Green (73%)
- Blue (64%)



- Red (86%)
- Yellow (80%)
- Blue (64%)



- Cyan (0%)
- Magenta (15%)
- Yellow (26%)
- Black (14%)



- Cyan (14%)
- Magenta (27%)
- Yellow (36%)

Brightness & Saturation Gradients

These gradients show how the RGB color 219, 187, 163 changes by changing the brightness by 10 percent. The first figure shows a shift by +10% for each color and the second figure -10%.

Similar to the brightness gradients but the following saturation gradients show a change of the RGB color 219, 187, 163 by changing the saturation by 10% instead.


 219, 187, 163

255, 255, 255

 255, 243, 218


 255, 255, 246

 219, 187, 163


 191, 160, 137

 163, 134, 111

 137, 109, 87

 111, 84, 63

 85, 61, 41

 61, 39, 21

 39, 19, 0

 0, 0, 0

 219, 187, 163

 219, 187, 163

 219, 174, 141

 219, 200, 185

 219, 162, 119

 219, 212, 207

 219, 149, 97

 219, 225, 229

 219, 137, 75

 219, 237, 251

 219, 124, 54

 219, 250, 255

 219, 112, 32

 219, 255, 255

 219, 99, 10

 219, 94, 0

Harmonies

Analogous

The Analogous color harmony consists of three colors that are next to each other on the color wheel.



228, 183, 175



219, 187, 163



204, 193, 159

Triad

The Triadic color harmony groups three colors that are evenly spaced from another and form a triangle on the color wheel.



219, 187, 163



152, 203, 195



199, 188, 221

Complementary

The Complementary color scheme is a pair of colors which are on the opposite of each other on the color wheel.



219, 187, 163



163, 195, 219

Split Complementary

Split-complementary colors differ from the complementary color scheme. The scheme consists of three colors, the original color and two neighbors of the complement color.



177, 193, 226



219, 187, 163



149, 202, 211

Square

The Square scheme is like the rectangle color scheme, but the four colors are evenly spaced on the color wheel.



219, 187, 163



166, 201, 178



158, 199, 223



217, 183, 208

Rectangle

The Rectangle color scheme consists of four colors that form a rectangle on the color wheel.



219, 187, 163



191, 196, 162



158, 199, 223



192, 190, 223

Sweetspot

The Sweet Spot groups the original color and five complimentary colors.



219, 187, 163



255, 243, 235



219, 163, 196



128, 120, 115



0, 0, 0



128, 128, 128

Same Dimension

The Same Dimension uses a secret algorithm to generate beautiful new colors.



219, 187, 163



255, 210, 176



219, 214, 163



110, 103, 99



173, 74, 0



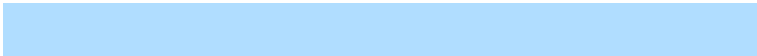
46, 20, 0

Inverse Universe

The Inverse Universe completely reimagines the original color for something new.



163, 195, 219



176, 221, 255



163, 168, 219



99, 105, 110



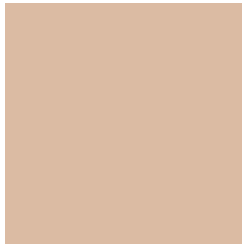
0, 99, 173



0, 26, 46

Previews

White Background



This preview shows how the RGB color 219, 187, 163 looks on a white background.

Color Contrast Check

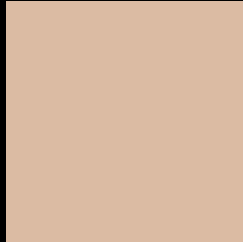
Large Text (above 18pt) WCAG AA × Fail

Any Text WCAG AA × Fail

Large Text (above 18pt) WCAG AAA × Fail

Any Text WCAG AAA × Fail

Black Background



This preview shows how the RGB color 219, 187, 163 looks on a black background.

Color Contrast Check

Large Text (above 18pt) WCAG AA ✓ Pass

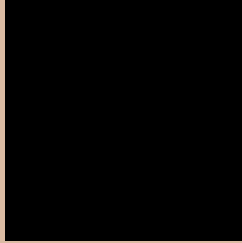
Any Text WCAG AA ✓ Pass

Large Text (above 18pt) WCAG AAA ✓ Pass

Any Text WCAG AAA ✓ Pass

If you want to check with other color combinations, try the [Color Contrast Checker](#).

RGB 219, 187, 163 Background



This preview shows how black text looks on a background with the RGB color 219, 187, 163.



This preview shows how white text looks on a background with the RGB color 219, 187, 163.

Color Blindness Simulation

Color vision deficiency is a very complex topic, and I could not describe the different causes any better than Wikipedia does, so if you want to learn more, you should check out their [article about color blindness](#).


Dichromacy



Original Color
219, 187, 163

Protanopia
203, 193, 166

Deuteranopia
222, 186, 163



Tritanopia
223, 182, 196

Trichromacy



Original Color
219, 187, 163

Protanomaly
209, 191, 165

Deuteranomaly
221, 186, 163

Tritanomaly
222, 184, 184

Monochromacy



Original Color
219, 187, 163

Achromatopsia
194, 194, 194

Achromatomaly
203, 191, 183

CSS Examples

Text

The CSS property to change the color of the text to RGB 219, 187, 163 is called "color". The color property can be set on classes, ids or directly on the HTML element.

This example shows how text in the color `rgb(219, 187, 163)` looks like.

```
.text, #text, p{  
    color:rgb(219, 187, 163)  
}
```

If you want to add a text shadow in that color use the text-shadow property, you can generate a text shadow directly with our [CSS Text Shadow Generator](#).

Here you see how black text with a 4 pixel rgb(219, 187, 163) colored shadow looks like.

```
.shadow{ text-shadow: 4px 4px 2px rgb(219, 187, 163) }
```

Border

The CSS property to change the border of an element to RGB 219, 187, 163 is called "border". The border property can be set on classes, ids or directly on the HTML element.

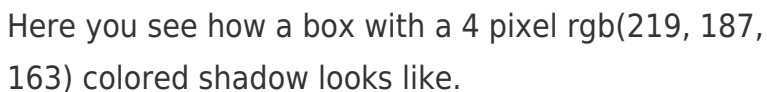
This example shows the color as border, it can be applied via the CSS property "border" or "border-color".

```
.border, #border, table{ border:4px solid rgb(219, 187, 163) }
```

If only the border color should be changed use the property `border-color`.

```
.border{ border-color:rgb(219, 187, 163) }
```

If you want to add a box shadow in that color use:



Here you see how a box with a 4 pixel `rgb(219, 187, 163)` colored shadow looks like.

```
.boxshadow{ -moz-box-shadow:4px 4px 4px 4px rgb(219, 187, 163); -webkit-box-shadow:4px 4px 4px 4px rgb(219, 187, 163); box-shadow:4px 4px 4px 4px rgb(219, 187, 163) }
```

Background

The CSS property to change the background color of an element to RGB 219, 187, 163 is called "background". The background property can be set on classes, ids or directly on the HTML element.

```
.background, #background, body{  
background: rgb(219, 187, 163) }
```

If only the background color should be changed can be used:

```
.background{ background-color: rgb(219,  
187, 163) }
```

This example shows the color as background, it is applied via the CSS property "background".

To optimize and compress your CSS code, you can use our [online CSS compressor and optimizer](#) based on csstidy. If you want to create a linear or radial gradient as background or border, check our [CSS Gradient Generator](#).

Hey! You found this booklet interesting? Support Converting Colors with the new Membership Option!

The pro membership hides all ads, plus gives you double the colors in the color bucket, and more awesome pro features!

[Learn more, Memberships starting at \\$2.50/m!](#)

**Follow me
on Twitter!**

@ConvertingColor