

Converting Colors

RGB(219, 94, 111)

Have a look what the booklet for
RGB(219, 94, 111) contains.

RGB(219, 94, 111)	3
<i>Conversions</i>	4
<i>Details</i>	6
<i>Harmonies</i>	11
<i>Previews</i>	23
<i>Color Blindness Simulation</i>	26
<i>CSS Examples</i>	29

Color

RGB(219, 94, 111)

Conversions

Conversions Part 1

Format	Color
Hex	DB5E6F
RGB	219, 94, 111
RGB Percent	86%, 37%, 44%
CMY	0.1412, 0.6314, 0.5647
CMYK	0.00, 0.57, 0.49, 0.14
HSL	352°, 63%, 61%
HSV	352°, 57%, 86%
XYZ	36.0854, 24.2132, 17.8106
YIQ	133.3130, 69.0430, 31.7870

Conversions

Conversions Part 2

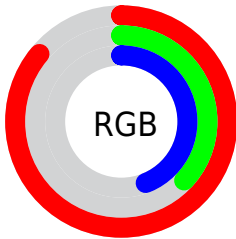
Format	Color
R_{YB}	219, 94, 111
Decimal	14376559
CIE Lab	56.30, 50.41, 15.28
CIE LCh	56, 52.673, 16.860
Yxy	24.2132, 0.4620, 0.3100
Android (android.graphics.Color)	4292566639 (0xFFDB5E6F)
YUV	133.3130, -11.0003, 75.1475
Hunter-Lab	49.2069, 44.7891, 12.9846

Details

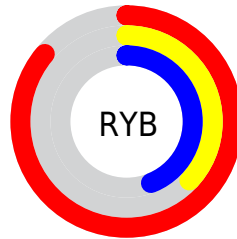
The RGB color **219, 94, 111** is a dark color, and the websafe version is hex **CC6666**. The color can be described as middle muted rose. A complement of this color would be **94, 219, 202**, and the grayscale version is **133, 133, 133**.

A 20% lighter version of the original color is **255, 148, 162**, and **159, 38, 64** is the 20% darker color. If you saturate the color by 10%, you get **219, 72, 92**, and if you desaturate by 10%, it is **219, 116, 130**.

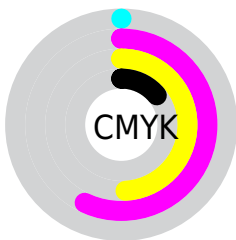
Distribution



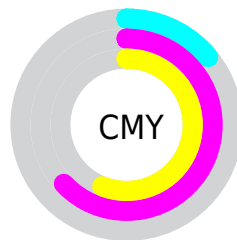
- Red (86%)
- Green (37%)
- Blue (44%)



- Red (86%)
- Yellow (37%)
- Blue (44%)



- Cyan (0%)
- Magenta (57%)
- Yellow (49%)
- Black (14%)



- Cyan (14%)
- Magenta (63%)
- Yellow (56%)

Brightness & Saturation Gradients

These gradients show how the RGB color 219, 94, 111 changes by changing the brightness by 10 percent. The first figure shows a shift by +10% for each color and the second figure -10%.


Similar to the brightness gradients but the following saturation gradients show a change of the RGB color 219, 94, 111 by changing the saturation by 10% instead.

 219, 94, 111

 219, 94, 111

255, 255, 255

 189, 67, 87

 255, 148, 162

 159, 38, 64

 255, 176, 189

 130, 0, 42

 255, 205, 217

 101, 0, 22

 255, 234, 246

 73, 0, 0


 46, 0, 2

 0, 0, 0

 219, 94, 111

 219, 94, 111

 219, 72, 92

 219, 116, 130

■ 219, 50, 73

■ 219, 138, 149

■ 219, 28, 54

■ 219, 160, 168

■ 219, 6, 35

■ 219, 182, 187

■ 219, 0, 30

■ 219, 204, 206

■ 219, 225, 225

■ 219, 247, 243

■ 219, 255, 255

Harmonies

Analogous

The Analogous color harmony consists of three colors that are next to each other on the color wheel.



208, 96, 157



219, 94, 111



206, 107, 70

Triad

The Triadic color harmony groups three colors that are evenly spaced from another and form a triangle on the color wheel.



219, 94, 111



81, 151, 69



0, 146, 224

Complementary

The Complementary color scheme is a pair of colors which are on the opposite of each other on the color wheel.



219, 94, 111



94, 219, 202

Split Complementary

Split-complementary colors differ from the complementary color scheme. The scheme consists of three colors, the original color and two neighbors of the complement color.



0, 154, 201



219, 94, 111



0, 156, 113

Square

The Square scheme is like the rectangle color scheme, but the four colors are evenly spaced on the color wheel.



219, 94, 111



135, 141, 39



0, 157, 160



99, 131, 223

Rectangle

The Rectangle color scheme consists of four colors that form a rectangle on the color wheel.



219, 94, 111



188, 120, 48



0, 157, 160



0, 149, 219

Sweetspot

The Sweet Spot groups the original color and five complimentary colors.



219, 94, 111



255, 212, 218



200, 94, 219



128, 102, 105



0, 0, 0



128, 128, 128

Same Dimension

The Same Dimension uses a secret algorithm to generate beautiful new colors.



219, 94, 111



255, 82, 105



219, 138, 94



110, 99, 100



173, 0, 24



46, 0, 6

Inverse Universe

The Inverse Universe completely reimagines the original color for something new.



219, 94, 111



255, 82, 105



94, 175, 219



110, 99, 100



173, 0, 24



46, 0, 6

Previews

White Background



This preview shows how the RGB color 219, 94, 111 looks on a white background.

Color Contrast Check

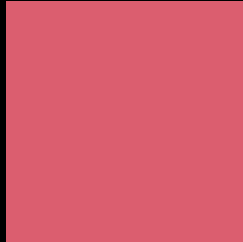
Large Text (above 18pt) WCAG AA ✓ Pass

Any Text WCAG AA ✗ Fail

Large Text (above 18pt) WCAG AAA ✗ Fail

Any Text WCAG AAA ✗ Fail

Black Background



This preview shows how the RGB color 219, 94, 111 looks on a black background.

Color Contrast Check

Large Text (above 18pt) WCAG AA ✓ Pass

Any Text WCAG AA ✓ Pass

Large Text (above 18pt) WCAG AAA ✓ Pass

Any Text WCAG AAA × Fail

If you want to check with other color combinations, try the [Color Contrast Checker](#).

RGB 219, 94, 111 Background



This preview shows how black text looks on a background with the RGB color 219, 94, 111.



This preview shows how white text looks on a background with the RGB color 219, 94, 111.

Color Blindness Simulation

Color vision deficiency is a very complex topic, and I could not describe the different causes any better than Wikipedia does, so if you want to learn more, you should check out their [article about color blindness](#).

Dichromacy



Original Color
219, 94, 111

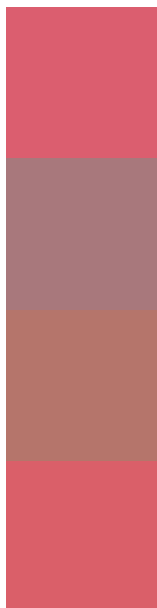
Protanopia
139, 135, 132

Deuteranopia
159, 130, 105



Tritanopia
218, 96, 102

Trichromacy



Original Color

219, 94, 111

Protanomaly

168, 120, 124

Deuteranomaly

181, 117, 107

Tritanomaly

218, 95, 105

Monochromacy



Original Color

219, 94, 111

Achromatopsia

133, 133, 133

Achromatomaly

164, 119, 125

CSS Examples

Text

The CSS property to change the color of the text to RGB 219, 94, 111 is called "color". The color property can be set on classes, ids or directly on the HTML element.

This example shows how text in the color `rgb(219, 94, 111)` looks like.

```
.text, #text, p{  
    color:rgb(219, 94, 111)  
}
```

If you want to add a text shadow in that color use the text-shadow property, you can generate a text shadow directly with our [CSS Text Shadow Generator](#).

Here you see how black text with a 4 pixel rgb(219, 94, 111) colored shadow looks like.

```
.shadow{ text-shadow: 4px 4px 2px rgb(219, 94, 111) }
```

Border

The CSS property to change the border of an element to RGB 219, 94, 111 is called "border". The border property can be set on classes, ids or directly on the HTML element.

This example shows the color as border, it can be applied via the CSS property "border" or "border-color".

```
.border, #border, table{ border:4px solid rgb(219, 94, 111) }
```

If only the border color should be changed use the property `border-color`.

```
.border{ border-color:rgb(219, 94, 111) }
```

If you want to add a box shadow in that color use:

Here you see how a box with a 4 pixel `rgb(219, 94, 111)` colored shadow looks like.

```
.boxshadow{ -moz-box-shadow:4px 4px 4px  
4px rgb(219, 94, 111); -webkit-box-  
shadow:4px 4px 4px 4px rgb(219, 94, 111);  
box-shadow:4px 4px 4px 4px rgb(219, 94,  
111) }
```

Background

The CSS property to change the background color of an element to RGB 219, 94, 111 is called "background". The background property can be set on classes, ids or directly on the HTML element.

```
.background, #background, body{  
background: rgb(219, 94, 111) }
```

If only the background color should be changed can be used:

```
.background{ background-color: rgb(219, 94,  
111) }
```

This example shows the color as background, it is applied via the CSS property "background".

To optimize and compress your CSS code, you can use our [online CSS compressor and optimizer](#) based on csstidy. If you want to create a linear or radial gradient as background or border, check our [CSS Gradient Generator](#).

Hey! You found this booklet interesting? Support Converting Colors with the new Membership Option!

The pro membership hides all ads, plus gives you double the colors in the color bucket, and more awesome pro features!

[Learn more, Memberships starting at \\$2.50/m!](#)

**Follow me
on Twitter!**

@ConvertingColor