

Converting Colors

RGB(221, 174, 163)

Have a look what the booklet for
RGB(221, 174, 163) contains.

RGB(221, 174, 163)	3
<i>Conversions</i>	4
<i>Details</i>	6
<i>Harmonies</i>	11
<i>Previews</i>	23
<i>Color Blindness Simulation</i>	26
<i>CSS Examples</i>	29

Color

RGB(221, 174, 163)

Conversions

Conversions Part 1

Format	Color
Hex	DDAEA3
RGB	221, 174, 163
RGB Percent	87%, 68%, 64%
CMY	0.1333, 0.3176, 0.3608
CMYK	0.00, 0.21, 0.26, 0.13
HSL	11°, 46%, 75%
HSV	11°, 26%, 87%
XYZ	51.5657, 48.2886, 41.2532
YIQ	186.7990, 31.5430, 6.5430

Conversions

Conversions Part 2

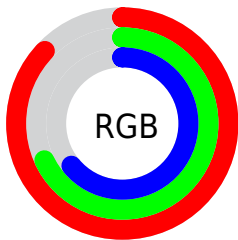
Format	Color
R _Y B	221, 177, 163
Decimal	14528163
CIE Lab	75.01, 15.53, 12.19
CIE LCh	75, 19.739, 38.129
Yxy	48.2886, 0.3654, 0.3422
Android (android.graphics.Color)	4292718243 (0xFFDDAEA3)
YUV	186.7990, -11.7329, 29.9943
Hunter-Lab	69.4900, 10.8501, 13.4451

Details

The RGB color **221, 174, 163** is a light color, and the websafe version is hex **CC9999**. A complement of this color would be **163, 210, 221**, and the grayscale version is **187, 187, 187**.

A 20% lighter version of the original color is **255, 230, 218**, and **165, 121, 111** is the 20% darker color. If you saturate the color by 10%, you get **221, 156, 141**, and if you desaturate by 10%, it is **221, 192, 185**.

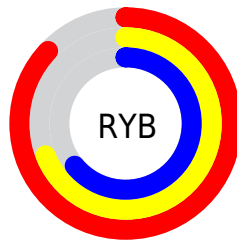
Distribution



Red (87%)

Green (68%)

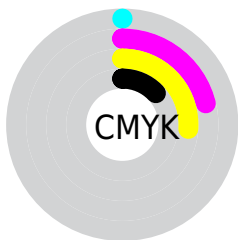
Blue (64%)



Red (87%)

Yellow (69%)

Blue (64%)

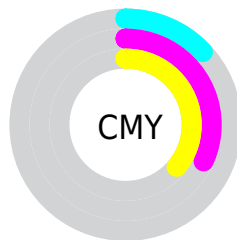


Cyan (0%)

Magenta (21%)

Yellow (26%)

Black (13%)



Cyan (13%)

Magenta (32%)

Yellow (36%)

Brightness & Saturation Gradients

These gradients show how the RGB color 221, 174, 163 changes by changing the brightness by 10 percent. The first figure shows a shift by +10% for each color and the second figure -10%.

Similar to the brightness gradients but the following saturation gradients show a change of the RGB color 221, 174, 163 by changing the saturation by 10% instead.

 221, 174, 163

 221, 174, 163

255, 255, 255

 193, 147, 137

 255, 230, 218

 165, 121, 111

 255, 255, 246

 138, 97, 87

 112, 73, 64

 86, 50, 42

 62, 28, 21

 40, 5, 0

 0, 0, 0

 221, 174, 163

 221, 174, 163

■ 221, 156, 141

■ 221, 192, 185

■ 221, 138, 119

■ 221, 210, 207

■ 221, 120, 97

■ 221, 228, 229

■ 221, 102, 75

■ 221, 246, 251

■ 221, 84, 52

■ 221, 255, 255

■ 221, 67, 30

■ 221, 49, 8

■ 221, 42, 0

Harmonies

Analogous

The Analogous color harmony consists of three colors that are next to each other on the color wheel.



222, 172, 180



221, 174, 163



211, 179, 151

Triad

The Triadic color harmony groups three colors that are evenly spaced from another and form a triangle on the color wheel.



221, 174, 163



153, 194, 171



170, 185, 220

Complementary

The Complementary color scheme is a pair of colors which are on the opposite of each other on the color wheel.



221, 174, 163



163, 210, 221

Split Complementary

Split-complementary colors differ from the complementary color scheme. The scheme consists of three colors, the original color and two neighbors of the complement color.



148, 190, 218



221, 174, 163



139, 195, 189

Square

The Square scheme is like the rectangle color scheme, but the four colors are evenly spaced on the color wheel.



221, 174, 163



173, 190, 156



136, 194, 206



194, 178, 213

Rectangle

The Rectangle color scheme consists of four colors that form a rectangle on the color wheel.



221, 174, 163



200, 183, 149



136, 194, 206



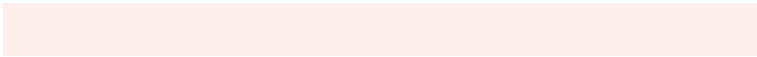
162, 187, 221

Sweetspot

The Sweet Spot groups the original color and five complimentary colors.



221, 174, 163



255, 238, 235



221, 163, 210



128, 117, 115



0, 0, 0



128, 128, 128

Same Dimension

The Same Dimension uses a secret algorithm to generate beautiful new colors.



221, 174, 163



255, 191, 176



221, 203, 163



110, 101, 99



173, 33, 0



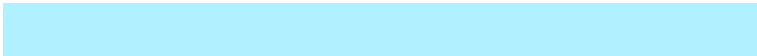
46, 9, 0

Inverse Universe

The Inverse Universe completely reimagines the original color for something new.



163, 210, 221



176, 240, 255



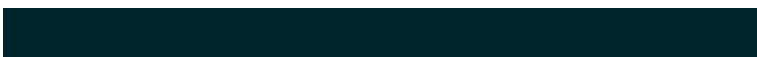
163, 181, 221



99, 108, 110



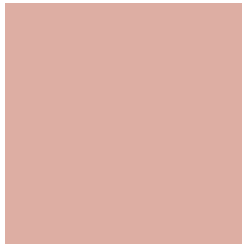
0, 141, 173



0, 37, 46

Previews

White Background



This preview shows how the RGB color 221, 174, 163 looks on a white background.

Color Contrast Check

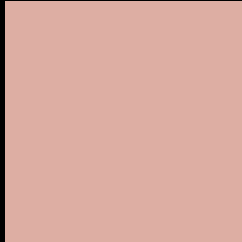
Large Text (above 18pt) WCAG AA × Fail

Any Text WCAG AA × Fail

Large Text (above 18pt) WCAG AAA × Fail

Any Text WCAG AAA × Fail

Black Background



This preview shows how the RGB color 221, 174, 163 looks on a black background.

Color Contrast Check

Large Text (above 18pt) WCAG AA ✓ Pass

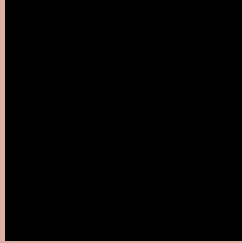
Any Text WCAG AA ✓ Pass

Large Text (above 18pt) WCAG AAA ✓ Pass

Any Text WCAG AAA ✓ Pass

If you want to check with other color combinations, try the [Color Contrast Checker](#).

RGB 221, 174, 163 Background



This preview shows how black text looks on a background with the RGB color 221, 174, 163.



This preview shows how white text looks on a background with the RGB color 221, 174, 163.

Color Blindness Simulation

Color vision deficiency is a very complex topic, and I could not describe the different causes any better than Wikipedia does, so if you want to learn more, you should check out their [article about color blindness](#).

Dichromacy



Original Color
221, 174, 163

Protanopia
192, 184, 168

Deuteranopia
211, 178, 162



Tritanopia
223, 171, 184

Trichromacy



Original Color
221, 174, 163

Protanomaly
203, 180, 166

Deuteranomaly
215, 177, 162

Tritanomaly
222, 172, 176

Monochromacy



Original Color
221, 174, 163

Achromatopsia
187, 187, 187

Achromatomaly
199, 182, 178

CSS Examples

Text

The CSS property to change the color of the text to RGB 221, 174, 163 is called "color". The color property can be set on classes, ids or directly on the HTML element.

This example shows how text in the color `rgb(221, 174, 163)` looks like.

```
.text, #text, p{  
    color:rgb(221, 174, 163)  
}
```

If you want to add a text shadow in that color use the text-shadow property, you can generate a text shadow directly with our [CSS Text Shadow Generator](#).

Here you see how black text with a 4 pixel rgb(221, 174, 163) colored shadow looks like.

```
.shadow{ text-shadow: 4px 4px 2px rgb(221, 174, 163) }
```

Border

The CSS property to change the border of an element to RGB 221, 174, 163 is called "border". The border property can be set on classes, ids or directly on the HTML element.

This example shows the color as border, it can be applied via the CSS property "border" or "border-color".

```
.border, #border, table{ border:4px solid rgb(221, 174, 163) }
```

If only the border color should be changed use the property `border-color`.

```
.border{ border-color:rgb(221, 174, 163) }
```

If you want to add a box shadow in that color use:

Here you see how a box with a 4 pixel `rgb(221, 174, 163)` colored shadow looks like.

```
.boxshadow{ -moz-box-shadow:4px 4px 4px  
4px rgb(221, 174, 163); -webkit-box-  
shadow:4px 4px 4px 4px rgb(221, 174, 163);  
box-shadow:4px 4px 4px 4px rgb(221, 174,  
163) }
```

Background

The CSS property to change the background color of an element to RGB 221, 174, 163 is called "background". The background property can be set on classes, ids or directly on the HTML element.

```
.background, #background, body{  
background: rgb(221, 174, 163) }
```

If only the background color should be changed can be used:

```
.background{ background-color: rgb(221,  
174, 163) }
```

This example shows the color as background, it is applied via the CSS property "background".

To optimize and compress your CSS code, you can use our [online CSS compressor and optimizer](#) based on csstidy. If you want to create a linear or radial gradient as background or border, check our [CSS Gradient Generator](#).

Hey! You found this booklet interesting? Support Converting Colors with the new Membership Option!

The pro membership hides all ads, plus gives you double the colors in the color bucket, and more awesome pro features!

[Learn more, Memberships starting at \\$2.50/m!](#)

**Follow me
on Twitter!**

@ConvertingColor