

Converting Colors

RGB(221, 189, 194)

Have a look what the booklet for
RGB(221, 189, 194) contains.

RGB(221, 189, 194)	3
<i>Conversions</i>	4
<i>Details</i>	6
<i>Harmonies</i>	11
<i>Previews</i>	23
<i>Color Blindness Simulation</i>	26
<i>CSS Examples</i>	29

Color

RGB(221, 189, 194)

Conversions

Conversions Part 1

Format	Color
Hex	DDBDC2
RGB	221, 189, 194
RGB Percent	87%, 74%, 76%
CMY	0.1333, 0.2588, 0.2392
CMYK	0.00, 0.14, 0.12, 0.13
HSL	351°, 32%, 80%
HSV	351°, 14%, 87%
XYZ	57.7540, 55.6624, 58.7389
YIQ	199.1380, 17.4670, 8.3390

Conversions

Conversions Part 2

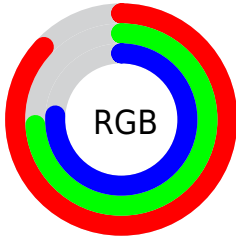
Format	Color
R_{YB}	221, 189, 194
Decimal	14532034
CIE _{Lab}	79.42, 12.20, 1.71
CIE _{LCh}	79, 12.318, 7.970
Yxy	55.6624, 0.3355, 0.3233
Android (android.graphics.Color)	4292722114 (0xFFDDBDC2)
YUV	199.1380, -2.5330, 19.1730
Hunter-Lab	74.6072, 7.6155, 5.5456

Details

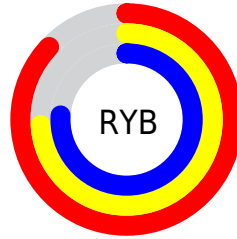
The RGB color **221, 189, 194** is a light color, and the websafe version is hex **FFCCCC**. A complement of this color would be **189, 221, 216**, and the grayscale version is **199, 199, 199**.

A 20% lighter version of the original color is **255, 245, 250**, and **166, 136, 140** is the 20% darker color. If you saturate the color by 10%, you get **221, 167, 175**, and if you desaturate by 10%, it is **221, 211, 213**.

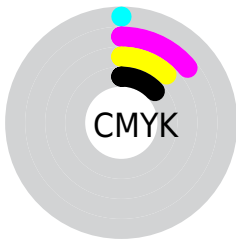
Distribution



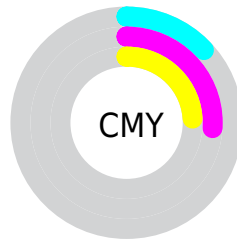
- Red (87%)
- Green (74%)
- Blue (76%)



- Red (87%)
- Yellow (74%)
- Blue (76%)



- Cyan (0%)
- Magenta (14%)
- Yellow (12%)
- Black (13%)




- Cyan (13%)
- Magenta (26%)
- Yellow (24%)

Brightness & Saturation Gradients


These gradients show how the RGB color 221, 189, 194 changes by changing the brightness by 10 percent. The first figure shows a shift by +10% for each color and the second figure -10%.


Similar to the brightness gradients but the following saturation gradients show a change of the RGB color 221, 189, 194 by changing the saturation by 10% instead.

 221, 189, 194

255, 255, 255

 255, 245, 250

 221, 189, 194

 193, 162, 167


 166, 136, 140

 139, 110, 115

 113, 86, 90

 89, 62, 67

 65, 40, 45

 42, 20, 24

 21, 0, 0

 0, 0, 0

■ 221, 189, 194

■ 221, 189, 194

■ 221, 167, 175

■ 221, 211, 213

■ 221, 145, 157

■ 221, 233, 231

■ 221, 123, 138

■ 221, 255, 250

■ 221, 101, 119

■ 221, 255, 255

■ 221, 78, 101

■ 221, 56, 82

■ 221, 34, 63

■ 221, 12, 45

■ 221, 0, 35

Harmonies

Analogous

The Analogous color harmony consists of three colors that are next to each other on the color wheel.



215, 190, 206



221, 189, 194



221, 190, 183

Triad

The Triadic color harmony groups three colors that are evenly spaced from another and form a triangle on the color wheel.



221, 189, 194



190, 200, 179



176, 200, 218

Complementary

The Complementary color scheme is a pair of colors which are on the opposite of each other on the color wheel.



221, 189, 194



189, 221, 216

Split Complementary

Split-complementary colors differ from the complementary color scheme. The scheme consists of three colors, the original color and two neighbors of the complement color.



169, 203, 210



221, 189, 194



178, 203, 188

Square

The Square scheme is like the rectangle color scheme, but the four colors are evenly spaced on the color wheel.



221, 189, 194



203, 197, 174



169, 204, 199



188, 197, 219

Rectangle

The Rectangle color scheme consists of four colors that form a rectangle on the color wheel.



221, 189, 194



217, 192, 178



169, 204, 199



172, 201, 216

Sweetspot

The Sweet Spot groups the original color and five complimentary colors.



221, 189, 194



255, 245, 246



216, 189, 221



128, 121, 122



0, 0, 0



128, 128, 128

Same Dimension

The Same Dimension uses a secret algorithm to generate beautiful new colors.



221, 189, 194



255, 212, 218



221, 200, 189



110, 99, 100



173, 0, 27



46, 0, 7

Inverse Universe

The Inverse Universe completely reimagines the original color for something new.



221, 189, 194



255, 212, 218



189, 210, 221



110, 99, 100



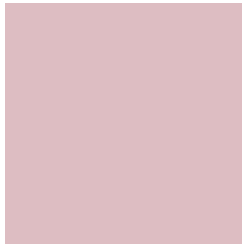
173, 0, 27



46, 0, 7

Previews

White Background



This preview shows how the RGB color 221, 189, 194 looks on a white background.

Color Contrast Check

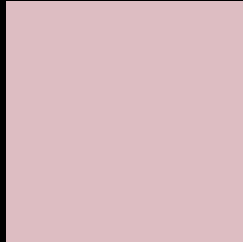
Large Text (above 18pt) WCAG AA × Fail

Any Text WCAG AA × Fail

Large Text (above 18pt) WCAG AAA × Fail

Any Text WCAG AAA × Fail

Black Background



This preview shows how the RGB color 221, 189, 194 looks on a black background.

Color Contrast Check

Large Text (above 18pt) WCAG AA ✓ Pass

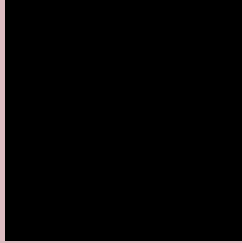
Any Text WCAG AA ✓ Pass

Large Text (above 18pt) WCAG AAA ✓ Pass

Any Text WCAG AAA ✓ Pass

If you want to check with other color combinations, try the [Color Contrast Checker](#).

RGB 221, 189, 194 Background



This preview shows how black text looks on a background with the RGB color 221, 189, 194.



This preview shows how white text looks on a background with the RGB color 221, 189, 194.

Color Blindness Simulation

Color vision deficiency is a very complex topic, and I could not describe the different causes any better than Wikipedia does, so if you want to learn more, you should check out their [article about color blindness](#).

Dichromacy



Original Color
221, 189, 194

Protanopia
200, 196, 198

Deuteranopia
217, 191, 194



Tritanopia
222, 188, 202

Trichromacy



Original Color

221, 189, 194

Protanomaly

208, 193, 197

Deuteranomaly

218, 190, 194

Tritanomaly

222, 188, 199

Monochromacy



Original Color

221, 189, 194

Achromatopsia

199, 199, 199

Achromatomaly

207, 195, 197

CSS Examples

Text

The CSS property to change the color of the text to RGB 221, 189, 194 is called "color". The color property can be set on classes, ids or directly on the HTML element.

This example shows how text in the color `rgb(221, 189, 194)` looks like.

```
.text, #text, p{  
    color:rgb(221, 189, 194)  
}
```

If you want to add a text shadow in that color use the text-shadow property, you can generate a text shadow directly with our [CSS Text Shadow Generator](#).

Here you see how black text with a 4 pixel rgb(221, 189, 194) colored shadow looks like.

```
.shadow{ text-shadow: 4px 4px 2px rgb(221, 189, 194) }
```

Border

The CSS property to change the border of an element to RGB 221, 189, 194 is called "border". The border property can be set on classes, ids or directly on the HTML element.

This example shows the color as border, it can be applied via the CSS property "border" or "border-color".

```
.border, #border, table{ border:4px solid rgb(221, 189, 194) }
```

If only the border color should be changed use the property `border-color`.

```
.border{ border-color:rgb(221, 189, 194) }
```

If you want to add a box shadow in that color use:

Here you see how a box with a 4 pixel `rgb(221, 189, 194)` colored shadow looks like.

```
.boxshadow{ -moz-box-shadow:4px 4px 4px  
4px rgb(221, 189, 194); -webkit-box-  
shadow:4px 4px 4px 4px rgb(221, 189, 194);  
box-shadow:4px 4px 4px 4px rgb(221, 189,  
194) }
```

Background

The CSS property to change the background color of an element to RGB 221, 189, 194 is called "background". The background property can be set on classes, ids or directly on the HTML element.

```
.background, #background, body{  
background: rgb(221, 189, 194) }
```

If only the background color should be changed can be used:

```
.background{ background-color: rgb(221,  
189, 194) }
```

This example shows the color as background, it is applied via the CSS property "background".

To optimize and compress your CSS code, you can use our [online CSS compressor and optimizer](#) based on csstidy. If you want to create a linear or radial gradient as background or border, check our [CSS Gradient Generator](#).

Hey! You found this booklet interesting? Support Converting Colors with the new Membership Option!

The pro membership hides all ads, plus gives you double the colors in the color bucket, and more awesome pro features!

[Learn more, Memberships starting at \\$2.50/m!](#)

**Follow me
on Twitter!**

@ConvertingColor