

Converting Colors

RGB(221, 71, 115)

Have a look what the booklet for
RGB(221, 71, 115) contains.

RGB(221, 71, 115)	3
<i>Conversions</i>	4
<i>Details</i>	6
<i>Harmonies</i>	11
<i>Previews</i>	23
<i>Color Blindness Simulation</i>	26
<i>CSS Examples</i>	29

Color

RGB(221, 71, 115)

Conversions

Conversions Part 1

Format	Color
Hex	DD4773
RGB	221, 71, 115
RGB Percent	87%, 28%, 45%
CMY	0.1333, 0.7216, 0.5490
CMYK	0.00, 0.68, 0.48, 0.13
HSL	342°, 69%, 57%
HSV	342°, 68%, 87%
XYZ	35.1665, 21.1164, 18.4421
YIQ	120.8660, 75.2760, 45.4840

Conversions

Conversions Part 2

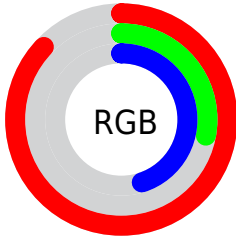
Format	Color
R_{YB}	221, 71, 115
Decimal	14501747
CIE _{Lab}	53.08, 61.21, 8.44
CIE _{LCh}	53, 61.785, 7.852
Yxy	21.1164, 0.4706, 0.2826
Android (android.graphics.Color)	4292691827 (0xFFDD4773)
YUV	120.8660, -2.8919, 87.8175
Hunter-Lab	45.9526, 56.1851, 8.3721

Details

The RGB color **221, 71, 115** is a dark color, and the websafe version is hex **CC3366**. The color can be described as middle muted rose. A complement of this color would be **71, 221, 177**, and the grayscale version is **121, 121, 121**.

A 20% lighter version of the original color is **255, 128, 167**, and **160, 0, 67** is the 20% darker color. If you saturate the color by 10%, you get **221, 49, 99**, and if you desaturate by 10%, it is **221, 93, 131**.

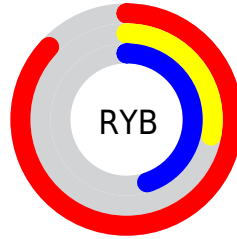
Distribution



Red (87%)

Green (28%)

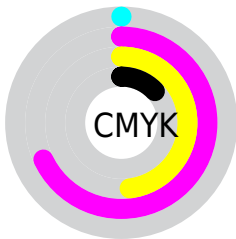
Blue (45%)



Red (87%)

Yellow (28%)

Blue (45%)

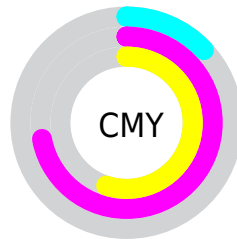


Cyan (0%)

Magenta (68%)

Yellow (48%)

Black (13%)



Cyan (13%)

Magenta (72%)

Yellow (55%)

Brightness & Saturation Gradients

These gradients show how the RGB color 221, 71, 115 changes by changing the brightness by 10 percent. The first figure shows a shift by +10% for each color and the second figure -10%.

Similar to the brightness gradients but the following saturation gradients show a change of the RGB color 221, 71, 115 by changing the saturation by 10% instead.



221, 71, 115



221, 71, 115

255, 255, 255



191, 39, 91



255, 128, 167



160, 0, 67



255, 157, 194



131, 0, 45



255, 185, 222



101, 0, 25



255, 214, 250



73, 0, 2



255, 244, 255



44, 0, 1



0, 0, 0



221, 71, 115



221, 71, 115



221, 49, 99



221, 93, 131

■ 221, 27, 84

■ 221, 115, 146

■ 221, 5, 68

■ 221, 137, 162

■ 221, 0, 65

■ 221, 159, 177

■ 221, 182, 193

■ 221, 204, 209

■ 221, 226, 224

■ 221, 248, 240

■ 221, 255, 255

Harmonies

Analogous

The Analogous color harmony consists of three colors that are next to each other on the color wheel.



201, 81, 168



221, 71, 115



213, 86, 64

Triad

The Triadic color harmony groups three colors that are evenly spaced from another and form a triangle on the color wheel.



221, 71, 115



82, 142, 32



0, 143, 225

Complementary

The Complementary color scheme is a pair of colors which are on the opposite of each other on the color wheel.



221, 71, 115



71, 221, 177

Split Complementary

Split-complementary colors differ from the complementary color scheme. The scheme consists of three colors, the original color and two neighbors of the complement color.



0, 150, 191



221, 71, 115



0, 149, 84

Square

The Square scheme is like the rectangle color scheme, but the four colors are evenly spaced on the color wheel.



221, 71, 115



139, 129, 0



0, 151, 140



0, 129, 233

Rectangle

The Rectangle color scheme consists of four colors that form a rectangle on the color wheel.



221, 71, 115



195, 102, 33



0, 151, 140



0, 146, 216

Sweetspot

The Sweet Spot groups the original color and five complimentary colors.



221, 71, 115



255, 204, 219



176, 71, 221



128, 97, 106



0, 0, 0



128, 128, 128

Same Dimension

The Same Dimension uses a secret algorithm to generate beautiful new colors.



221, 71, 115



255, 48, 109



221, 101, 71



110, 99, 102



173, 0, 51



46, 0, 13

Inverse Universe

The Inverse Universe completely reimagines the original color for something new.



221, 71, 115



255, 48, 109



71, 191, 221



110, 99, 102



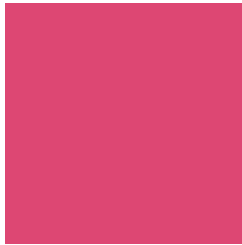
173, 0, 51



46, 0, 13

Previews

White Background



This preview shows how the RGB color 221, 71, 115 looks on a white background.

Color Contrast Check

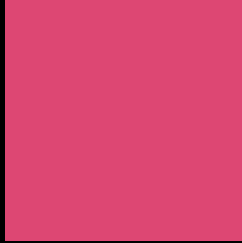
Large Text (above 18pt) WCAG AA ✓ Pass

Any Text WCAG AA ✗ Fail

Large Text (above 18pt) WCAG AAA ✗ Fail

Any Text WCAG AAA ✗ Fail

Black Background



This preview shows how the RGB color 221, 71, 115 looks on a black background.

Color Contrast Check

Large Text (above 18pt) WCAG AA ✓ Pass

Any Text WCAG AA ✓ Pass

Large Text (above 18pt) WCAG AAA ✓ Pass

Any Text WCAG AAA × Fail

If you want to check with other color combinations, try the [Color Contrast Checker](#).

RGB 221, 71, 115 Background



This preview shows how black text looks on a background with the RGB color 221, 71, 115.



This preview shows how white text looks on a background with the RGB color 221, 71, 115.

Color Blindness Simulation

Color vision deficiency is a very complex topic, and I could not describe the different causes any better than Wikipedia does, so if you want to learn more, you should check out their [article about color blindness](#).

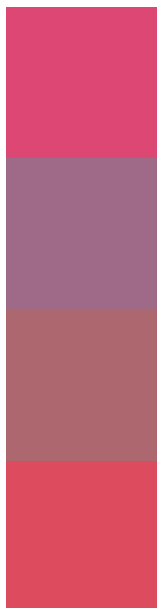
Dichromacy





Tritanopia
219, 78, 82

Trichromacy



Original Color

221, 71, 115

Protanomaly

159, 106, 135

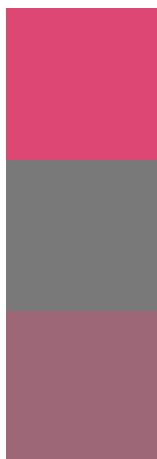
Deuteranomaly

173, 103, 111

Tritanomaly

220, 75, 94

Monochromacy



Original Color

221, 71, 115

Achromatopsia

121, 121, 121

Achromatomaly

157, 103, 119

CSS Examples

Text

The CSS property to change the color of the text to RGB 221, 71, 115 is called "color". The color property can be set on classes, ids or directly on the HTML element.

This example shows how text in the color `rgb(221, 71, 115)` looks like.

```
.text, #text, p{  
    color:rgb(221, 71, 115)  
}
```

If you want to add a text shadow in that color use the text-shadow property, you can generate a text shadow directly with our [CSS Text Shadow Generator](#).

Here you see how black text with a 4 pixel rgb(221, 71, 115) colored shadow looks like.

```
.shadow{ text-shadow: 4px 4px 2px rgb(221, 71, 115) }
```

Border

The CSS property to change the border of an element to RGB 221, 71, 115 is called "border". The border property can be set on classes, ids or directly on the HTML element.

This example shows the color as border, it can be applied via the CSS property "border" or "border-color".

```
.border, #border, table{ border:4px solid rgb(221, 71, 115) }
```

If only the border color should be changed use the property `border-color`.

```
.border{ border-color:rgb(221, 71, 115) }
```

If you want to add a box shadow in that color use:

Here you see how a box with a 4 pixel `rgb(221, 71, 115)` colored shadow looks like.

```
.boxshadow{ -moz-box-shadow:4px 4px 4px  
4px rgb(221, 71, 115); -webkit-box-  
shadow:4px 4px 4px 4px rgb(221, 71, 115);  
box-shadow:4px 4px 4px 4px rgb(221, 71,  
115) }
```

Background

The CSS property to change the background color of an element to RGB 221, 71, 115 is called "background". The background property can be set on classes, ids or directly on the HTML element.

```
.background, #background, body{  
background: rgb(221, 71, 115) }
```

If only the background color should be changed can be used:

```
.background{ background-color: rgb(221, 71,  
115) }
```

This example shows the color as background, it is applied via the CSS property "background".

To optimize and compress your CSS code, you can use our [online CSS compressor and optimizer](#) based on csstidy. If you want to create a linear or radial gradient as background or border, check our [CSS Gradient Generator](#).

Hey! You found this booklet interesting? Support Converting Colors with the new Membership Option!

The pro membership hides all ads, plus gives you double the colors in the color bucket, and more awesome pro features!

[Learn more, Memberships starting at \\$2.50/m!](#)

**Follow me
on Twitter!**

@ConvertingColor