

Converting Colors

RGB(222, 185, 169)

Have a look what the booklet for
RGB(222, 185, 169) contains.

RGB(222, 185, 169)	3
<i>Conversions</i>	4
<i>Details</i>	6
<i>Harmonies</i>	11
<i>Previews</i>	23
<i>Color Blindness Simulation</i>	26
<i>CSS Examples</i>	29

Color

RGB(222, 185, 169)

Conversions

Conversions Part 1

Format	Color
Hex	DEB9A9
RGB	222, 185, 169
RGB Percent	87%, 73%, 66%
CMY	0.1294, 0.2745, 0.3373
CMYK	0.00, 0.17, 0.24, 0.13
HSL	18°, 45%, 77%
HSV	18°, 24%, 87%
XYZ	54.6346, 53.0921, 44.9044
YIQ	194.2390, 27.1880, 2.8680

Conversions

Conversions Part 2

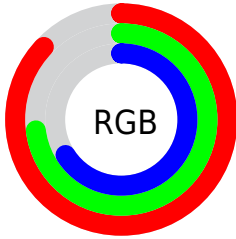
Format	Color
R _Y B	222, 192, 169
Decimal	14596521
CIE Lab	77.93, 10.86, 13.08
CIE LCh	78, 17.001, 50.283
Yxy	53.0921, 0.3580, 0.3478
Android (android.graphics.Color)	4292786601 (0xFFDEB9A9)
YUV	194.2390, -12.4428, 24.3464
Hunter-Lab	72.8643, 6.3290, 14.4662

Details

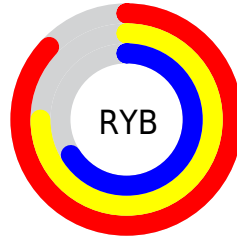
The RGB color **222, 185, 169** is a light color, and the websafe version is hex **FFCCCC**. A complement of this color would be **169, 206, 222**, and the grayscale version is **194, 194, 194**.

A 20% lighter version of the original color is **255, 241, 224**, and **166, 132, 117** is the 20% darker color. If you saturate the color by 10%, you get **222, 170, 147**, and if you desaturate by 10%, it is **222, 200, 191**.

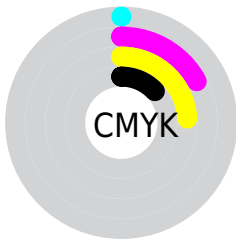
Distribution



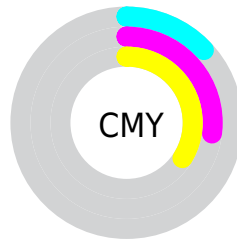
- Red (87%)
- Green (73%)
- Blue (66%)



- Red (87%)
- Yellow (75%)
- Blue (66%)



- Cyan (0%)
- Magenta (17%)
- Yellow (24%)
- Black (13%)




- Cyan (13%)
- Magenta (27%)
- Yellow (34%)

Brightness & Saturation Gradients

These gradients show how the RGB color 222, 185, 169 changes by changing the brightness by 10 percent. The first figure shows a shift by +10% for each color and the second figure -10%.


Similar to the brightness gradients but the following saturation gradients show a change of the RGB color 222, 185, 169 by changing the saturation by 10% instead.


 222, 185, 169

255, 255, 255

 255, 241, 224

255, 255, 253

 222, 185, 169

 194, 158, 143

 166, 132, 117

 139, 107, 92

 113, 82, 69

 88, 59, 46

 64, 37, 25

 42, 17, 0

 5, 0, 0

 0, 0, 0

■ 222, 185, 169

■ 222, 185, 169

■ 222, 170, 147

■ 222, 200, 191

■ 222, 154, 125

■ 222, 216, 213

■ 222, 139, 102

■ 222, 231, 236

■ 222, 123, 80

■ 222, 247, 255

■ 222, 108, 58

■ 222, 255, 255

■ 222, 92, 36

■ 222, 77, 14

■ 222, 67, 0

Harmonies

Analogous

The Analogous color harmony consists of three colors that are next to each other on the color wheel.



226, 182, 182



222, 185, 169



210, 190, 162

Triad

The Triadic color harmony groups three colors that are evenly spaced from another and form a triangle on the color wheel.



222, 185, 169



160, 202, 187



189, 190, 222

Complementary

The Complementary color scheme is a pair of colors which are on the opposite of each other on the color wheel.



222, 185, 169



169, 206, 222

Split Complementary

Split-complementary colors differ from the complementary color scheme. The scheme consists of three colors, the original color and two neighbors of the complement color.



169, 196, 223



222, 185, 169



152, 202, 203

Square

The Square scheme is like the rectangle color scheme, but the four colors are evenly spaced on the color wheel.



222, 185, 169



176, 199, 172



155, 200, 216



208, 185, 213

Rectangle

The Rectangle color scheme consists of four colors that form a rectangle on the color wheel.



222, 185, 169



200, 193, 162



155, 200, 216



182, 192, 223

Sweetspot

The Sweet Spot groups the original color and five complimentary colors.



222, 185, 169



255, 243, 237



222, 169, 206



128, 120, 117



0, 0, 0



128, 128, 128

Same Dimension

The Same Dimension uses a secret algorithm to generate beautiful new colors.



222, 185, 169



255, 203, 181



222, 211, 169



112, 104, 101



176, 53, 0



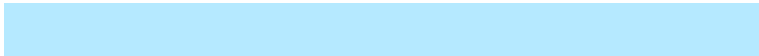
48, 15, 0

Inverse Universe

The Inverse Universe completely reimagines the original color for something new.



169, 206, 222



181, 233, 255



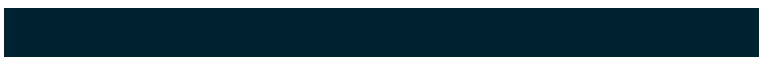
169, 180, 222



101, 109, 112



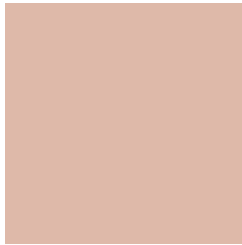
0, 123, 176



0, 34, 48

Previews

White Background



This preview shows how the RGB color 222, 185, 169 looks on a white background.

Color Contrast Check

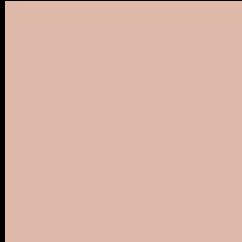
Large Text (above 18pt) WCAG AA × Fail

Any Text WCAG AA × Fail

Large Text (above 18pt) WCAG AAA × Fail

Any Text WCAG AAA × Fail

Black Background



This preview shows how the RGB color 222, 185, 169 looks on a black background.

Color Contrast Check

Large Text (above 18pt) WCAG AA ✓ Pass

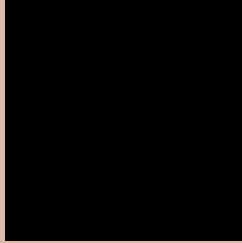
Any Text WCAG AA ✓ Pass

Large Text (above 18pt) WCAG AAA ✓ Pass

Any Text WCAG AAA ✓ Pass

If you want to check with other color combinations, try the [Color Contrast Checker](#).

RGB 222, 185, 169 Background



This preview shows how black text looks on a background with the RGB color 222, 185, 169.



This preview shows how white text looks on a background with the RGB color 222, 185, 169.

Color Blindness Simulation

Color vision deficiency is a very complex topic, and I could not describe the different causes any better than Wikipedia does, so if you want to learn more, you should check out their [article about color blindness](#).


Dichromacy



Original Color
222, 185, 169

Protanopia
201, 192, 173

Deuteranopia
220, 186, 169



Tritanopia
225, 181, 195

Trichromacy



Original Color
222, 185, 169

Protanomaly
209, 189, 172

Deuteranomaly
221, 186, 169

Tritanomaly
224, 182, 186

Monochromacy



Original Color
222, 185, 169

Achromatopsia
194, 194, 194

Achromatomaly
204, 191, 185

CSS Examples

Text

The CSS property to change the color of the text to RGB 222, 185, 169 is called "color". The color property can be set on classes, ids or directly on the HTML element.

This example shows how text in the color `rgb(222, 185, 169)` looks like.

```
.text, #text, p{  
    color:rgb(222, 185, 169)  
}
```

If you want to add a text shadow in that color use the text-shadow property, you can generate a text shadow directly with our [CSS Text Shadow Generator](#).

Here you see how black text with a 4 pixel rgb(222, 185, 169) colored shadow looks like.

```
.shadow{ text-shadow: 4px 4px 2px rgb(222, 185, 169) }
```

Border

The CSS property to change the border of an element to RGB 222, 185, 169 is called "border". The border property can be set on classes, ids or directly on the HTML element.

This example shows the color as border, it can be applied via the CSS property "border" or "border-color".

```
.border, #border, table{ border:4px solid rgb(222, 185, 169) }
```

If only the border color should be changed use the property `border-color`.

```
.border{ border-color:rgb(222, 185, 169) }
```

If you want to add a box shadow in that color use:

Here you see how a box with a 4 pixel `rgb(222, 185, 169)` colored shadow looks like.

```
.boxshadow{ -moz-box-shadow:4px 4px 4px 4px rgb(222, 185, 169); -webkit-box-shadow:4px 4px 4px 4px rgb(222, 185, 169); box-shadow:4px 4px 4px 4px rgb(222, 185, 169) }
```

Background

The CSS property to change the background color of an element to RGB 222, 185, 169 is called "background". The background property can be set on classes, ids or directly on the HTML element.

```
.background, #background, body{  
background: rgb(222, 185, 169) }
```

If only the background color should be changed can be used:

```
.background{ background-color: rgb(222,  
185, 169) }
```

This example shows the color as background, it is applied via the CSS property "background".

To optimize and compress your CSS code, you can use our [online CSS compressor and optimizer](#) based on csstidy. If you want to create a linear or radial gradient as background or border, check our [CSS Gradient Generator](#).

Hey! You found this booklet interesting? Support Converting Colors with the new Membership Option!

The pro membership hides all ads, plus gives you double the colors in the color bucket, and more awesome pro features!

[Learn more, Memberships starting at \\$2.50/m!](#)

**Follow me
on Twitter!**

@ConvertingColor