

Converting Colors

RGB(222, 197, 171)

Have a look what the booklet for
RGB(222, 197, 171) contains.

RGB(222, 197, 171)	3
<i>Conversions</i>	4
<i>Details</i>	6
<i>Harmonies</i>	11
<i>Previews</i>	23
<i>Color Blindness Simulation</i>	26
<i>CSS Examples</i>	29

Color

RGB(222, 197, 171)

Conversions

Conversions Part 1

Format	Color
Hex	DEC5AB
RGB	222, 197, 171
RGB Percent	87%, 77%, 67%
CMY	0.1294, 0.2275, 0.3294
CMYK	0.00, 0.11, 0.23, 0.13
HSL	31°, 44%, 77%
HSV	31°, 23%, 87%
XYZ	57.4411, 58.4024, 46.7734
YIQ	201.5110, 23.2460, -2.7860

Conversions

Conversions Part 2

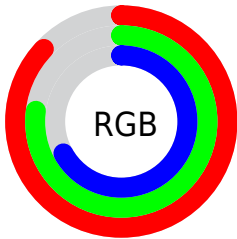
Format	Color
R_{YB}	220, 222, 171
Decimal	14599595
CIE _{Lab}	80.96, 4.79, 16.27
CIE _{LCh}	81, 16.960, 73.587
Yxy	58.4024, 0.3532, 0.3591
Android (android.graphics.Color)	4292789675 (0xFFDEC5AB)
YUV	201.5110, -15.0419, 17.9689
Hunter-Lab	76.4214, 0.4296, 17.2068

Details

The RGB color **222, 197, 171** is a light color, and the websafe version is hex **CCCC99**. A complement of this color would be **171, 196, 222**, and the grayscale version is **202, 202, 202**.

A 20% lighter version of the original color is **255, 254, 226**, and **166, 143, 119** is the 20% darker color. If you saturate the color by 10%, you get **222, 186, 149**, and if you desaturate by 10%, it is **222, 208, 193**.

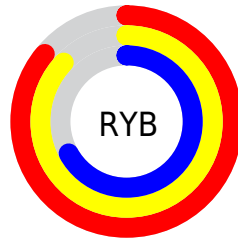
Distribution



Red (87%)

Green (77%)

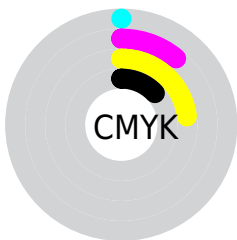
Blue (67%)



Red (86%)

Yellow (87%)

Blue (67%)

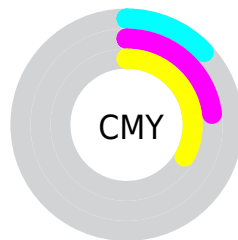


Cyan (0%)

Magenta (11%)

Yellow (23%)

Black (13%)



Cyan (13%)


Magenta (23%)

Yellow (33%)

Brightness & Saturation Gradients


These gradients show how the RGB color 222, 197, 171 changes by changing the brightness by 10 percent. The first figure shows a shift by +10% for each color and the second figure -10%.


Similar to the brightness gradients but the following saturation gradients show a change of the RGB color 222, 197, 171 by changing the saturation by 10% instead.


 222, 197, 171


255, 255, 255


 255, 254, 226

 222, 197, 171

 194, 170, 144

 166, 143, 119

 140, 118, 94

 114, 93, 70

 89, 70, 48


 64, 47, 27

 42, 26, 0

 17, 0, 0


 0, 0, 0

 222, 197, 171


 222, 197, 171

 222, 186, 149

 222, 208, 193

 222, 175, 127

 222, 219, 215

 222, 164, 104

 222, 230, 238

 222, 153, 82

 222, 241, 255

 222, 143, 60

 222, 251, 255

 222, 132, 38

 222, 255, 255

 222, 121, 16

 222, 113, 0

Harmonies

Analogous

The Analogous color harmony consists of three colors that are next to each other on the color wheel.



232, 192, 180



222, 197, 171



206, 202, 170

Triad

The Triadic color harmony groups three colors that are evenly spaced from another and form a triangle on the color wheel.



222, 197, 171



161, 210, 208



213, 195, 224

Complementary

The Complementary color scheme is a pair of colors which are on the opposite of each other on the color wheel.



222, 197, 171



171, 196, 222

Split Complementary

Split-complementary colors differ from the complementary color scheme. The scheme consists of three colors, the original color and two neighbors of the complement color.



193, 200, 232



222, 197, 171



161, 209, 222

Square

The Square scheme is like the rectangle color scheme, but the four colors are evenly spaced on the color wheel.



222, 197, 171



171, 210, 192



174, 205, 231



228, 191, 210

Rectangle

The Rectangle color scheme consists of four colors that form a rectangle on the color wheel.



222, 197, 171



194, 205, 174



174, 205, 231



206, 196, 227

Sweetspot

The Sweet Spot groups the original color and five complimentary colors.



222, 197, 171



255, 246, 237



222, 171, 196



128, 123, 117



0, 0, 0



128, 128, 128

Same Dimension

The Same Dimension uses a secret algorithm to generate beautiful new colors.



222, 197, 171



255, 220, 184



222, 222, 171



112, 107, 101



176, 90, 0



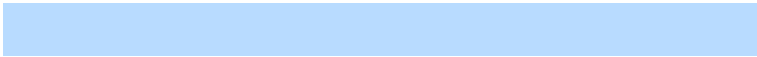
48, 25, 0

Inverse Universe

The Inverse Universe completely reimagines the original color for something new.



171, 196, 222



184, 219, 255



171, 171, 222



101, 106, 112



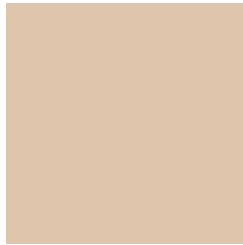
0, 86, 176



0, 24, 48

Previews

White Background



This preview shows how the RGB color 222, 197, 171 looks on a white background.

Color Contrast Check

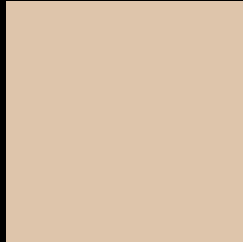
Large Text (above 18pt) WCAG AA × Fail

Any Text WCAG AA × Fail

Large Text (above 18pt) WCAG AAA × Fail

Any Text WCAG AAA × Fail

Black Background



This preview shows how the RGB color 222, 197, 171 looks on a black background.

Color Contrast Check

Large Text (above 18pt) WCAG AA ✓ Pass

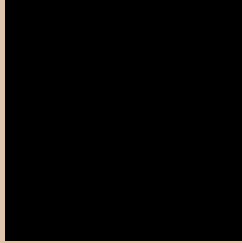
Any Text WCAG AA ✓ Pass

Large Text (above 18pt) WCAG AAA ✓ Pass

Any Text WCAG AAA ✓ Pass

If you want to check with other color combinations, try the [Color Contrast Checker](#).

RGB 222, 197, 171 Background



This preview shows how black text looks on a background with the RGB color 222, 197, 171.



This preview shows how white text looks on a background with the RGB color 222, 197, 171.

Color Blindness Simulation

Color vision deficiency is a very complex topic, and I could not describe the different causes any better than Wikipedia does, so if you want to learn more, you should check out their [article about color blindness](#).

Dichromacy



Original Color
222, 197, 171

Protanopia
211, 201, 173

Deuteranopia
231, 194, 172



Tritanopia
226, 192, 207

Trichromacy



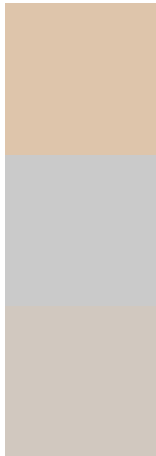
Original Color
222, 197, 171

Protanomaly
215, 200, 172

Deuteranomaly
228, 195, 172

Tritanomaly
225, 194, 194

Monochromacy



Original Color
222, 197, 171

Achromatopsia
202, 202, 202

Achromatomaly
209, 200, 191

CSS Examples

Text

The CSS property to change the color of the text to RGB 222, 197, 171 is called "color". The color property can be set on classes, ids or directly on the HTML element.

This example shows how text in the color `rgb(222, 197, 171)` looks like.

```
.text, #text, p{  
    color:rgb(222, 197, 171)  
}
```

If you want to add a text shadow in that color use the text-shadow property, you can generate a text shadow directly with our [CSS Text Shadow Generator](#).

Here you see how black text with a 4 pixel rgb(222, 197, 171) colored shadow looks like.

```
.shadow{ text-shadow: 4px 4px 2px rgb(222, 197, 171) }
```

Border

The CSS property to change the border of an element to RGB 222, 197, 171 is called "border". The border property can be set on classes, ids or directly on the HTML element.

This example shows the color as border, it can be applied via the CSS property "border" or "border-color".

```
.border, #border, table{ border:4px solid rgb(222, 197, 171) }
```

If only the border color should be changed use the property `border-color`.

```
.border{ border-color:rgb(222, 197, 171) }
```

If you want to add a box shadow in that color use:

Here you see how a box with a 4 pixel `rgb(222, 197, 171)` colored shadow looks like.

```
.boxshadow{ -moz-box-shadow:4px 4px 4px  
4px rgb(222, 197, 171); -webkit-box-  
shadow:4px 4px 4px 4px rgb(222, 197, 171);  
box-shadow:4px 4px 4px 4px rgb(222, 197,  
171) }
```

Background

The CSS property to change the background color of an element to RGB 222, 197, 171 is called "background". The background property can be set on classes, ids or directly on the HTML element.

```
.background, #background, body{  
background: rgb(222, 197, 171) }
```

If only the background color should be changed can be used:

```
.background{ background-color: rgb(222,  
197, 171) }
```

This example shows the color as background, it is applied via the CSS property "background".

To optimize and compress your CSS code, you can use our [online CSS compressor and optimizer](#) based on csstidy. If you want to create a linear or radial gradient as background or border, check our [CSS Gradient Generator](#).

Hey! You found this booklet interesting? Support Converting Colors with the new Membership Option!

The pro membership hides all ads, plus gives you double the colors in the color bucket, and more awesome pro features!

[Learn more, Memberships starting at \\$2.50/m!](#)

**Follow me
on Twitter!**

@ConvertingColor