

Converting Colors

RGB(222, 197, 204)

Have a look what the booklet for
RGB(222, 197, 204) contains.

RGB(222, 197, 204)	3
<i>Conversions</i>	4
<i>Details</i>	6
<i>Harmonies</i>	11
<i>Previews</i>	23
<i>Color Blindness Simulation</i>	26
<i>CSS Examples</i>	29

Color

RGB(222, 197, 204)

Conversions

Conversions Part 1

Format	Color
Hex	DEC5CC
RGB	222, 197, 204
RGB Percent	87%, 77%, 80%
CMY	0.1294, 0.2275, 0.2000
CMYK	0.00, 0.11, 0.08, 0.13
HSL	343°, 27%, 82%
HSV	343°, 11%, 87%
XYZ	60.9895, 59.8217, 65.4590
YIQ	205.2730, 12.6530, 7.4770

Conversions

Conversions Part 2

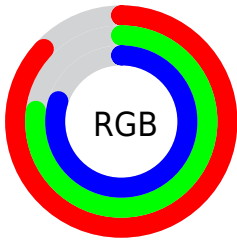
Format	Color
R _Y B	222, 197, 204
Decimal	14599628
CIE Lab	81.74, 9.96, -0.28
CIE LCh	82, 9.969, 358.400
Yxy	59.8217, 0.3274, 0.3212
Android (android.graphics.Color)	4292789708 (0xFFDEC5CC)
YUV	205.2730, -0.6276, 14.6696
Hunter-Lab	77.3445, 5.4022, 3.9622

Details

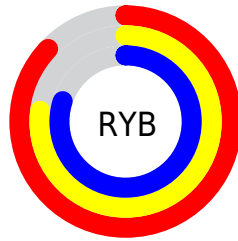
The RGB color **222, 197, 204** is a light color, and the websafe version is hex **CCCCCC**. A complement of this color would be **197, 222, 215**, and the grayscale version is **205, 205, 205**.

A 20% lighter version of the original color is **255, 254, 255**, and **167, 143, 150** is the 20% darker color. If you saturate the color by 10%, you get **222, 175, 188**, and if you desaturate by 10%, it is **222, 219, 220**.

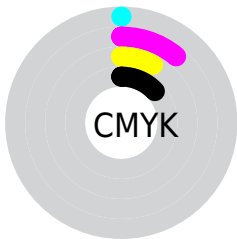
Distribution



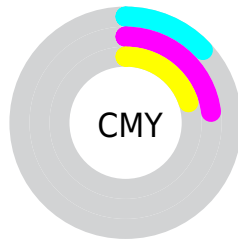
- Red (87%)
- Green (77%)
- Blue (80%)



- Red (87%)
- Yellow (77%)
- Blue (80%)



- Cyan (0%)
- Magenta (11%)
- Yellow (8%)
- Black (13%)




- Cyan (13%)
- Magenta (23%)
- Yellow (20%)

Brightness & Saturation Gradients


These gradients show how the RGB color 222, 197, 204 changes by changing the brightness by 10 percent. The first figure shows a shift by +10% for each color and the second figure -10%.


Similar to the brightness gradients but the following saturation gradients show a change of the RGB color 222, 197, 204 by changing the saturation by 10% instead.


 222, 197, 204


255, 255, 255

255, 254, 255

 222, 197, 204

 194, 170, 177

 167, 143, 150

 140, 118, 124

 115, 93, 99


 90, 69, 75

 66, 47, 53


 44, 26, 32

 25, 0, 7


 0, 0, 0

 222, 197, 204


 222, 197, 204

 222, 175, 188


 222, 219, 220

 222, 153, 172

 222, 241, 236

 222, 130, 156

 222, 255, 252

 222, 108, 140

 222, 255, 255

 222, 86, 124

 222, 64, 108

 222, 42, 92

 222, 19, 76

 222, 0, 62

Harmonies

Analogous

The Analogous color harmony consists of three colors that are next to each other on the color wheel.



215, 198, 213



222, 197, 204



224, 197, 195

Triad

The Triadic color harmony groups three colors that are evenly spaced from another and form a triangle on the color wheel.



222, 197, 204



201, 205, 187



184, 207, 219

Complementary

The Complementary color scheme is a pair of colors which are on the opposite of each other on the color wheel.



222, 197, 204



197, 222, 215

Split Complementary

Split-complementary colors differ from the complementary color scheme. The scheme consists of three colors, the original color and two neighbors of the complement color.



180, 209, 212



222, 197, 204



191, 208, 193

Square

The Square scheme is like the rectangle color scheme, but the four colors are evenly spaced on the color wheel.



222, 197, 204



212, 202, 185



183, 209, 202



193, 204, 222

Rectangle

The Rectangle color scheme consists of four colors that form a rectangle on the color wheel.



222, 197, 204



222, 199, 190



183, 209, 202



182, 208, 217

Sweetspot

The Sweet Spot groups the original color and five complimentary colors.



222, 197, 204



255, 247, 249



215, 197, 222



128, 122, 124



0, 0, 0



128, 128, 128

Same Dimension

The Same Dimension uses a secret algorithm to generate beautiful new colors.



222, 197, 204



255, 219, 229



222, 202, 197



112, 101, 104



176, 0, 49



48, 0, 14

Inverse Universe

The Inverse Universe completely reimagines the original color for something new.



222, 197, 204



255, 219, 229



197, 217, 222



112, 101, 104



176, 0, 49



48, 0, 14

Previews

White Background



This preview shows how the RGB color 222, 197, 204 looks on a white background.

Color Contrast Check

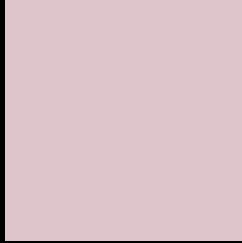
Large Text (above 18pt) WCAG AA × Fail

Any Text WCAG AA × Fail

Large Text (above 18pt) WCAG AAA × Fail

Any Text WCAG AAA × Fail

Black Background



This preview shows how the RGB color 222, 197, 204 looks on a black background.

Color Contrast Check

Large Text (above 18pt) WCAG AA ✓ Pass

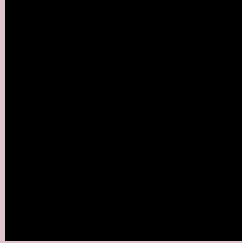
Any Text WCAG AA ✓ Pass

Large Text (above 18pt) WCAG AAA ✓ Pass

Any Text WCAG AAA ✓ Pass

If you want to check with other color combinations, try the [Color Contrast Checker](#).

RGB 222, 197, 204 Background



This preview shows how black text looks on a background with the RGB color 222, 197, 204.



This preview shows how white text looks on a background with the RGB color 222, 197, 204.

Color Blindness Simulation

Color vision deficiency is a very complex topic, and I could not describe the different causes any better than Wikipedia does, so if you want to learn more, you should check out their [article about color blindness](#).


Dichromacy



Original Color
222, 197, 204

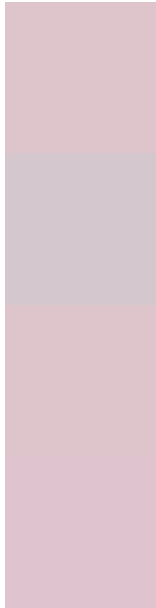
Protanopia
206, 202, 207

Deuteranopia
222, 197, 204



Tritanopia
223, 196, 211

Trichromacy



Original Color

222, 197, 204

Protanomaly

212, 200, 206

Deuteranomaly

222, 197, 204

Tritanomaly

223, 196, 208

Monochromacy



Original Color

222, 197, 204

Achromatopsia

205, 205, 205

Achromatomaly

211, 202, 205

CSS Examples

Text

The CSS property to change the color of the text to RGB 222, 197, 204 is called "color". The color property can be set on classes, ids or directly on the HTML element.

This example shows how text in the color `rgb(222, 197, 204)` looks like.

```
.text, #text, p{  
    color:rgb(222, 197, 204)  
}
```

If you want to add a text shadow in that color use the text-shadow property, you can generate a text shadow directly with our [CSS Text Shadow Generator](#).

Here you see how black text with a 4 pixel rgb(222, 197, 204) colored shadow looks like.

```
.shadow{ text-shadow: 4px 4px 2px rgb(222, 197, 204) }
```

Border

The CSS property to change the border of an element to RGB 222, 197, 204 is called "border". The border property can be set on classes, ids or directly on the HTML element.

This example shows the color as border, it can be applied via the CSS property "border" or "border-color".

```
.border, #border, table{ border:4px solid rgb(222, 197, 204) }
```

If only the border color should be changed use the property `border-color`.

```
.border{ border-color:rgb(222, 197, 204) }
```

If you want to add a box shadow in that color use:

Here you see how a box with a 4 pixel `rgb(222, 197, 204)` colored shadow looks like.

```
.boxshadow{ -moz-box-shadow:4px 4px 4px 4px rgb(222, 197, 204); -webkit-box-shadow:4px 4px 4px 4px rgb(222, 197, 204); box-shadow:4px 4px 4px 4px rgb(222, 197, 204) }
```

Background

The CSS property to change the background color of an element to RGB 222, 197, 204 is called "background". The background property can be set on classes, ids or directly on the HTML element.

```
.background, #background, body{  
background: rgb(222, 197, 204) }
```

If only the background color should be changed can be used:

```
.background{ background-color: rgb(222,  
197, 204) }
```

This example shows the color as background, it is applied via the CSS property "background".

To optimize and compress your CSS code, you can use our [online CSS compressor and optimizer](#) based on csstidy. If you want to create a linear or radial gradient as background or border, check our [CSS Gradient Generator](#).

Hey! You found this booklet interesting? Support Converting Colors with the new Membership Option!

The pro membership hides all ads, plus gives you double the colors in the color bucket, and more awesome pro features!

[Learn more, Memberships starting at \\$2.50/m!](#)

**Follow me
on Twitter!**

@ConvertingColor