

# Converting Colors

RGB(222, 84, 121)

Have a look what the booklet for  
RGB(222, 84, 121) contains.

<b>RGB(222, 84, 121)</b> .....	3
<b><i>Conversions</i></b> .....	4
<b><i>Details</i></b> .....	6
<b><i>Harmonies</i></b> .....	11
<b><i>Previews</i></b> .....	23
<b><i>Color Blindness Simulation</i></b> .....	26
<b><i>CSS Examples</i></b> .....	29

# Color

**RGB(222, 84, 121)**

# Conversions

## Conversions Part 1

<b>Format</b>	<b>Color</b>
Hex	DE5479
RGB	222, 84, 121
RGB Percent	87%, 33%, 47%
CMY	0.1294, 0.6706, 0.5255
CMYK	0.00, 0.62, 0.45, 0.13
HSL	344°, 68%, 60%
HSV	344°, 62%, 87%
XYZ	36.7457, 23.2507, 20.6403
YIQ	129.4800, 70.3710, 40.7630

# Conversions

## Conversions Part 2

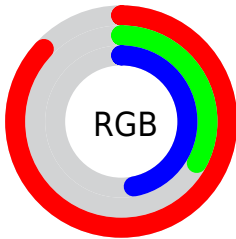
<b>Format</b>	<b>Color</b>
<b>R<sub>YB</sub></b>	222, 84, 121
Decimal	14570617
CIE Lab	55.33, 56.79, 8.09
CIE LCh	55, 57.363, 8.110
Yxy	23.2507, 0.4557, 0.2883
Android (android.graphics.Color)	4292760697 (0xFFDE5479)
YUV	129.4800, -4.1806, 81.1400
Hunter-Lab	48.2190, 51.6443, 8.3740

# Details

The RGB color **222, 84, 121** is a dark color, and the websafe version is hex **CC3366**. The color can be described as middle muted rose. A complement of this color would be **84, 222, 185**, and the grayscale version is **129, 129, 129**.

A 20% lighter version of the original color is **255, 140, 173**, and **162, 20, 73** is the 20% darker color. If you saturate the color by 10%, you get **222, 62, 105**, and if you desaturate by 10%, it is **222, 106, 137**.

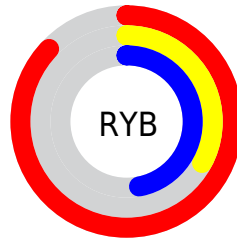
# Distribution



Red (87%)

Green (33%)

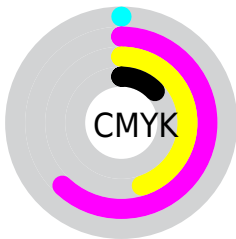
Blue (47%)



Red (87%)

Yellow (33%)

Blue (47%)

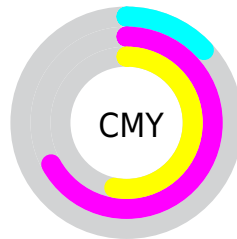


Cyan (0%)

Magenta (62%)

Yellow (45%)

Black (13%)



Cyan (13%)

Magenta (67%)

Yellow (53%)

# Brightness & Saturation Gradients


These gradients show how the RGB color 222, 84, 121 changes by changing the brightness by 10 percent. The first figure shows a shift by +10% for each color and the second figure -10%.

Similar to the brightness gradients but the following saturation gradients show a change of the RGB color 222, 84, 121 by changing the saturation by 10% instead.



 222, 84, 121       222, 84, 121

255, 255, 255       192, 55, 96

 255, 140, 173       162, 20, 73

 255, 168, 200       133, 0, 51

 255, 196, 228       104, 0, 30

 255, 225, 255       76, 0, 3

 48, 0, 2

 0, 0, 0

 222, 84, 121       222, 84, 121

 222, 62, 105       222, 106, 137

■ 222, 40, 89

■ 222, 128, 153

■ 222, 17, 72

■ 222, 151, 170

■ 222, 0, 60

■ 222, 173, 186

■ 222, 195, 202

■ 222, 217, 218

■ 222, 239, 235

■ 222, 255, 251

■ 222, 255, 255

# Harmonies

## Analogous

The Analogous color harmony consists of three colors that are next to each other on the color wheel.



203, 92, 171



222, 84, 121



215, 96, 74

# Triad

The Triadic color harmony groups three colors that are evenly spaced from another and form a triangle on the color wheel.



222, 84, 121



92, 147, 47



0, 148, 225

# Complementary

The Complementary color scheme is a pair of colors which are on the opposite of each other on the color wheel.



222, 84, 121



84, 222, 185

# Split Complementary

Split-complementary colors differ from the complementary color scheme. The scheme consists of three colors, the original color and two neighbors of the complement color.



0, 155, 193



222, 84, 121



0, 154, 93

# Square

The Square scheme is like the rectangle color scheme, but the four colors are evenly spaced on the color wheel.



222, 84, 121



145, 134, 17



0, 156, 145



41, 134, 231

# Rectangle

The Rectangle color scheme consists of four colors that form a rectangle on the color wheel.



222, 84, 121



198, 110, 46



0, 156, 145



0, 151, 216



# Sweetspot

The Sweet Spot groups the original color and five complimentary colors.



222, 84, 121



255, 207, 220



183, 84, 222



128, 98, 106



0, 0, 0



128, 128, 128



# Same Dimension

The Same Dimension uses a secret algorithm to generate beautiful new colors.



222, 84, 121



255, 64, 115



222, 114, 84



112, 101, 104



176, 0, 47



48, 0, 13



# Inverse Universe

The Inverse Universe completely reimagines the original color for something new.



222, 84, 121



255, 64, 115



84, 192, 222



112, 101, 104



176, 0, 47

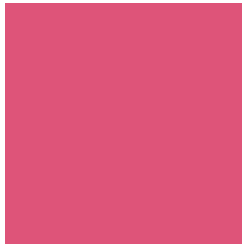


48, 0, 13



# Previews

## White Background



This preview shows how the RGB color 222, 84, 121 looks on a white background.

## Color Contrast Check

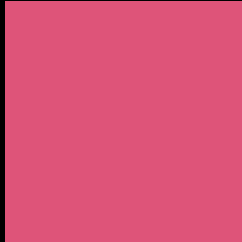
Large Text (above 18pt) WCAG AA ✓ Pass

Any Text WCAG AA ✗ Fail

Large Text (above 18pt) WCAG AAA ✗ Fail

Any Text WCAG AAA ✗ Fail

# Black Background



This preview shows how the RGB color 222, 84, 121 looks on a black background.

## Color Contrast Check

Large Text (above 18pt) WCAG AA ✓ Pass

Any Text WCAG AA ✓ Pass

Large Text (above 18pt) WCAG AAA ✓ Pass

Any Text WCAG AAA × Fail

If you want to check with other color combinations, try the [Color Contrast Checker](#).



## RGB 222, 84, 121 Background



This preview shows how black text looks on a background with the RGB color 222, 84, 121.



This preview shows how white text looks on a background with the RGB color 222, 84, 121.

# Color Blindness Simulation

Color vision deficiency is a very complex topic, and I could not describe the different causes any better than Wikipedia does, so if you want to learn more, you should check out their [article about color blindness](#).

## Dichromacy



**Original Color**  
222, 84, 121

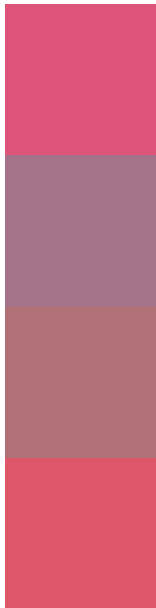
**Protanopia**  
131, 132, 148

**Deuteranopia**  
152, 128, 114



**Tritanopia**  
220, 89, 95

# Trichromacy



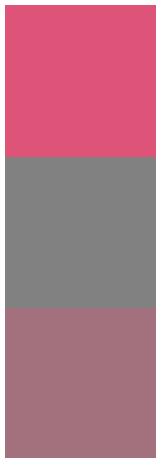
**Original Color**  
222, 84, 121

**Protanomaly**  
164, 115, 138

**Deuteranomaly**  
177, 112, 117

**Tritanomaly**  
221, 87, 104

# Monochromacy



**Original Color**  
222, 84, 121

**Achromatopsia**  
129, 129, 129

**Achromatomaly**  
163, 113, 126

# CSS Examples

## Text

The CSS property to change the color of the text to RGB 222, 84, 121 is called "color". The color property can be set on classes, ids or directly on the HTML element.

This example shows how text in the color `rgb(222, 84, 121)` looks like.

```
.text, #text, p{  
    color:rgb(222, 84, 121)  
}
```

If you want to add a text shadow in that color use the text-shadow property, you can generate a text shadow directly with our [CSS Text Shadow Generator](#).

Here you see how black text with a 4 pixel rgb(222, 84, 121) colored shadow looks like.

```
.shadow{ text-shadow: 4px 4px 2px rgb(222, 84, 121) }
```

## Border

The CSS property to change the border of an element to RGB 222, 84, 121 is called "border". The border property can be set on classes, ids or directly on the HTML element.

This example shows the color as border, it can be applied via the CSS property "border" or "border-color".

```
.border, #border, table{ border:4px solid rgb(222, 84, 121) }
```

If only the border color should be changed use the property `border-color`.

```
.border{ border-color:rgb(222, 84, 121) }
```

If you want to add a box shadow in that color use:

Here you see how a box with a 4 pixel `rgb(222, 84, 121)` colored shadow looks like.

```
.boxshadow{ -moz-box-shadow:4px 4px 4px  
4px rgb(222, 84, 121); -webkit-box-  
shadow:4px 4px 4px 4px rgb(222, 84, 121);  
box-shadow:4px 4px 4px 4px rgb(222, 84,  
121) }
```

# Background

The CSS property to change the background color of an element to RGB 222, 84, 121 is called "background". The background property can be set on classes, ids or directly on the HTML element.

```
.background, #background, body{  
background: rgb(222, 84, 121) }
```

If only the background color should be changed can be used:

```
.background{ background-color: rgb(222, 84,  
121) }
```

This example shows the color as background, it is applied via the CSS property "background".

To optimize and compress your CSS code, you can use our [online CSS compressor and optimizer](#) based on csstidy. If you want to create a linear or radial gradient as background or border, check our [CSS Gradient Generator](#).



Hey! You found this booklet interesting? Support Converting Colors with the new Membership Option!

The pro membership hides all ads, plus gives you double the colors in the color bucket, and more awesome pro features!

**[Learn more, Memberships starting at \\$2.50/m!](#)**

**Follow me  
on Twitter!**

@ConvertingColor