

Converting Colors

RGB(223, 162, 189)

Have a look what the booklet for
RGB(223, 162, 189) contains.

RGB(223, 162, 189)	3
<i>Conversions</i>	4
<i>Details</i>	6
<i>Harmonies</i>	11
<i>Previews</i>	23
<i>Color Blindness Simulation</i>	26
<i>CSS Examples</i>	29

Color

RGB(223, 162, 189)

Conversions

Conversions Part 1

Format	Color
Hex	DFA2BD
RGB	223, 162, 189
RGB Percent	87%, 64%, 74%
CMY	0.1255, 0.3647, 0.2588
CMYK	0.00, 0.27, 0.15, 0.13
HSL	333°, 49%, 75%
HSV	333°, 27%, 87%
XYZ	52.5371, 45.2028, 54.1001
YIQ	183.3170, 27.6890, 21.3290

Conversions

Conversions Part 2

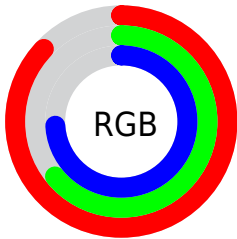
Format	Color
R _Y B	223, 162, 189
Decimal	14656189
CIE Lab	73.03, 26.61, -4.92
CIE LCh	73, 27.063, 349.534
Yxy	45.2028, 0.3460, 0.2977
Android (android.graphics.Color)	4292846269 (0xFFDFA2BD)
YUV	183.3170, 2.8017, 34.8020
Hunter-Lab	67.2330, 21.8253, -0.6456

Details

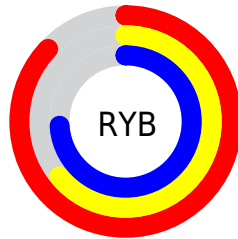
The RGB color **223, 162, 189** is a light color, and the websafe version is hex **CC99CC**. A complement of this color would be **162, 223, 196**, and the grayscale version is **183, 183, 183**.

A 20% lighter version of the original color is **255, 217, 245**, and **167, 110, 136** is the 20% darker color. If you saturate the color by 10%, you get **223, 140, 177**, and if you desaturate by 10%, it is **223, 184, 201**.

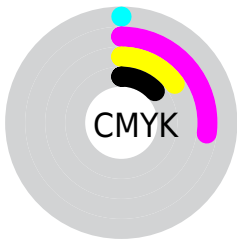
Distribution



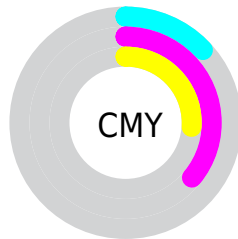
- Red (87%)
- Green (64%)
- Blue (74%)



- Red (87%)
- Yellow (64%)
- Blue (74%)



- Cyan (0%)
- Magenta (27%)
- Yellow (15%)
- Black (13%)



- Cyan (13%)
- Magenta (36%)
- Yellow (26%)

Brightness & Saturation Gradients

These gradients show how the RGB color 223, 162, 189 changes by changing the brightness by 10 percent. The first figure shows a shift by +10% for each color and the second figure -10%.

Similar to the brightness gradients but the following saturation gradients show a change of the RGB color 223, 162, 189 by changing the saturation by 10% instead.


 223, 162, 189

255, 255, 255

 255, 217, 245


 255, 246, 255

 223, 162, 189

 195, 135, 162

 167, 110, 136

 140, 85, 110

 114, 61, 86

 88, 38, 63

 64, 15, 41

 42, 0, 21

 0, 0, 0

 223, 162, 189

 223, 162, 189

■ 223, 140, 177

■ 223, 184, 201

■ 223, 117, 164

■ 223, 207, 214

■ 223, 95, 152

■ 223, 229, 226

■ 223, 73, 139

■ 223, 251, 239

■ 223, 50, 127

■ 223, 255, 251

■ 223, 28, 114

■ 223, 255, 255

■ 223, 6, 102

■ 223, 0, 99

Harmonies

Analogous

The Analogous color harmony consists of three colors that are next to each other on the color wheel.



203, 168, 212



223, 162, 189



230, 162, 164

Triad

The Triadic color harmony groups three colors that are evenly spaced from another and form a triangle on the color wheel.



223, 162, 189



180, 183, 132



110, 190, 216

Complementary

The Complementary color scheme is a pair of colors which are on the opposite of each other on the color wheel.



223, 162, 189



162, 223, 196

Split Complementary

Split-complementary colors differ from the complementary color scheme. The scheme consists of three colors, the original color and two neighbors of the complement color.



107, 193, 195



223, 162, 189



152, 189, 146

Square

The Square scheme is like the rectangle color scheme, but the four colors are evenly spaced on the color wheel.



223, 162, 189



205, 175, 131



125, 193, 169



136, 184, 227

Rectangle

The Rectangle color scheme consists of four colors that form a rectangle on the color wheel.



223, 162, 189



227, 165, 149



125, 193, 169



106, 191, 210

Sweetspot

The Sweet Spot groups the original color and five complimentary colors.



223, 162, 189



255, 235, 244



196, 162, 223



128, 115, 120



0, 0, 0



128, 128, 128

Same Dimension

The Same Dimension uses a secret algorithm to generate beautiful new colors.



223, 162, 189



255, 171, 208



223, 165, 162



112, 101, 106



176, 0, 78



48, 0, 21

Inverse Universe

The Inverse Universe completely reimagines the original color for something new.



223, 162, 189



255, 171, 208



162, 220, 223



112, 101, 106



176, 0, 78



48, 0, 21

Previews

White Background



This preview shows how the RGB color 223, 162, 189 looks on a white background.

Color Contrast Check

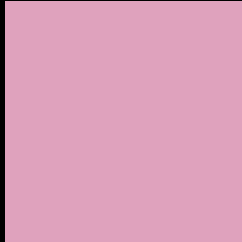
Large Text (above 18pt) WCAG AA × Fail

Any Text WCAG AA × Fail

Large Text (above 18pt) WCAG AAA × Fail

Any Text WCAG AAA × Fail

Black Background



This preview shows how the RGB color 223, 162, 189 looks on a black background.

Color Contrast Check

Large Text (above 18pt) WCAG AA ✓ Pass

Any Text WCAG AA ✓ Pass

Large Text (above 18pt) WCAG AAA ✓ Pass

Any Text WCAG AAA ✓ Pass

If you want to check with other color combinations, try the [Color Contrast Checker](#).

RGB 223, 162, 189 Background



This preview shows how black text looks on a background with the RGB color 223, 162, 189.



This preview shows how white text looks on a background with the RGB color 223, 162, 189.

Color Blindness Simulation

Color vision deficiency is a very complex topic, and I could not describe the different causes any better than Wikipedia does, so if you want to learn more, you should check out their [article about color blindness](#).

Dichromacy



Original Color
223, 162, 189

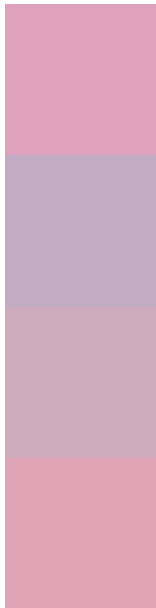
Protanopia
177, 178, 199

Deuteranopia
194, 174, 187



Tritanopia
222, 164, 177

Trichromacy



Original Color
223, 162, 189

Protanomaly
194, 172, 195

Deuteranomaly
205, 170, 188

Tritanomaly
222, 163, 181

Monochromacy



Original Color
223, 162, 189

Achromatopsia
183, 183, 183

Achromatomaly
198, 175, 185

CSS Examples

Text

The CSS property to change the color of the text to RGB 223, 162, 189 is called "color". The color property can be set on classes, ids or directly on the HTML element.

This example shows how text in the color `rgb(223, 162, 189)` looks like.

```
.text, #text, p{  
    color:rgb(223, 162, 189)  
}
```

If you want to add a text shadow in that color use the text-shadow property, you can generate a text shadow directly with our [CSS Text Shadow Generator](#).

Here you see how black text with a 4 pixel rgb(223, 162, 189) colored shadow looks like.

```
.shadow{ text-shadow: 4px 4px 2px rgb(223, 162, 189) }
```

Border

The CSS property to change the border of an element to RGB 223, 162, 189 is called "border". The border property can be set on classes, ids or directly on the HTML element.

This example shows the color as border, it can be applied via the CSS property "border" or "border-color".

```
.border, #border, table{ border:4px solid rgb(223, 162, 189) }
```

If only the border color should be changed use the property `border-color`.

```
.border{ border-color:rgb(223, 162, 189) }
```

If you want to add a box shadow in that color use:

Here you see how a box with a 4 pixel `rgb(223, 162, 189)` colored shadow looks like.

```
.boxshadow{ -moz-box-shadow:4px 4px 4px  
4px rgb(223, 162, 189); -webkit-box-  
shadow:4px 4px 4px 4px rgb(223, 162, 189);  
box-shadow:4px 4px 4px 4px rgb(223, 162,  
189) }
```

Background

The CSS property to change the background color of an element to RGB 223, 162, 189 is called "background". The background property can be set on classes, ids or directly on the HTML element.

```
.background, #background, body{  
background: rgb(223, 162, 189) }
```

If only the background color should be changed can be used:

```
.background{ background-color: rgb(223,  
162, 189) }
```

This example shows the color as background, it is applied via the CSS property "background".

To optimize and compress your CSS code, you can use our [online CSS compressor and optimizer](#) based on csstidy. If you want to create a linear or radial gradient as background or border, check our [CSS Gradient Generator](#).

Hey! You found this booklet interesting? Support Converting Colors with the new Membership Option!

The pro membership hides all ads, plus gives you double the colors in the color bucket, and more awesome pro features!

[Learn more, Memberships starting at \\$2.50/m!](#)

**Follow me
on Twitter!**

@ConvertingColor