

Converting Colors

RGB(223, 194, 170)

Have a look what the booklet for
RGB(223, 194, 170) contains.

RGB(223, 194, 170)	3
<i>Conversions</i>	4
<i>Details</i>	6
<i>Harmonies</i>	11
<i>Previews</i>	23
<i>Color Blindness Simulation</i>	26
<i>CSS Examples</i>	29

Color

RGB(223, 194, 170)

Conversions

Conversions Part 1

Format	Color
Hex	DFC2AA
RGB	223, 194, 170
RGB Percent	87%, 76%, 67%
CMY	0.1255, 0.2392, 0.3333
CMYK	0.00, 0.13, 0.24, 0.13
HSL	27°, 45%, 77%
HSV	27°, 24%, 87%
XYZ	56.9789, 57.1738, 46.0628
YIQ	199.9350, 24.9880, -1.3160

Conversions

Conversions Part 2

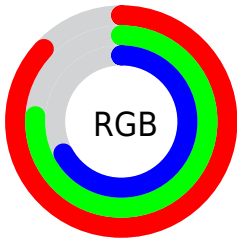
Format	Color
R _Y B	223, 214, 170
Decimal	14664362
CIE Lab	80.28, 6.61, 15.86
CIE LCh	80, 17.178, 67.381
Yxy	57.1738, 0.3556, 0.3569
Android (android.graphics.Color)	4292854442 (0xFFDFC2AA)
YUV	199.9350, -14.7580, 20.2280
Hunter-Lab	75.6134, 2.1863, 16.8106

Details

The RGB color **223, 194, 170** is a light color, and the websafe version is hex **FFCCCC**. A complement of this color would be **170, 199, 223**, and the grayscale version is **200, 200, 200**.

A 20% lighter version of the original color is **255, 250, 225**, and **167, 140, 118** is the 20% darker color. If you saturate the color by 10%, you get **223, 182, 148**, and if you desaturate by 10%, it is **223, 206, 192**.

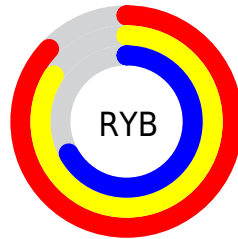
Distribution



Red (87%)

Green (76%)

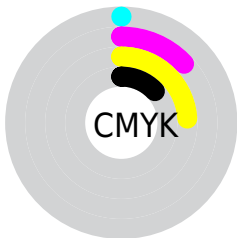
Blue (67%)



Red (87%)

Yellow (84%)

Blue (67%)

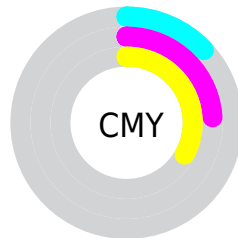


Cyan (0%)

Magenta (13%)

Yellow (24%)

Black (13%)



Cyan (13%)

Magenta (24%)

Yellow (33%)

Brightness & Saturation Gradients

These gradients show how the RGB color 223, 194, 170 changes by changing the brightness by 10 percent. The first figure shows a shift by +10% for each color and the second figure -10%.

Similar to the brightness gradients but the following saturation gradients show a change of the RGB color 223, 194, 170 by changing the saturation by 10% instead.

 223, 194, 170

255, 255, 255


 255, 250, 225


255, 255, 254

 223, 194, 170

 195, 167, 143

 167, 140, 118

 140, 115, 93

 114, 90, 69

 89, 67, 47

 65, 45, 26

 43, 24, 0

 17, 0, 0

 0, 0, 0

■ 223, 194, 170

■ 223, 194, 170

■ 223, 182, 148

■ 223, 206, 192

■ 223, 170, 125

■ 223, 218, 215

■ 223, 157, 103

■ 223, 231, 237

■ 223, 145, 81

■ 223, 243, 255

■ 223, 133, 59

■ 223, 255, 255

■ 223, 121, 36

■ 223, 109, 14

■ 223, 101, 0

Harmonies

Analogous

The Analogous color harmony consists of three colors that are next to each other on the color wheel.



232, 190, 180



223, 194, 170



208, 199, 167

Triad

The Triadic color harmony groups three colors that are evenly spaced from another and form a triangle on the color wheel.



223, 194, 170



160, 209, 203



207, 194, 225

Complementary

The Complementary color scheme is a pair of colors which are on the opposite of each other on the color wheel.



223, 194, 170



170, 199, 223

Split Complementary

Split-complementary colors differ from the complementary color scheme. The scheme consists of three colors, the original color and two neighbors of the complement color.



187, 199, 231



223, 194, 170



158, 207, 218

Square

The Square scheme is like the rectangle color scheme, but the four colors are evenly spaced on the color wheel.



223, 194, 170



172, 207, 186



168, 204, 228



224, 190, 212

Rectangle

The Rectangle color scheme consists of four colors that form a rectangle on the color wheel.



223, 194, 170



196, 203, 171



168, 204, 228



200, 196, 227

Sweetspot

The Sweet Spot groups the original color and five complimentary colors.



223, 194, 170



255, 245, 237



223, 170, 199



128, 122, 117



0, 0, 0



128, 128, 128

Same Dimension

The Same Dimension uses a secret algorithm to generate beautiful new colors.



223, 194, 170



255, 215, 181



223, 220, 170



112, 106, 101



176, 80, 0



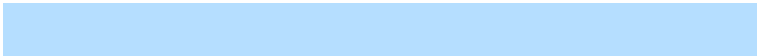
48, 22, 0

Inverse Universe

The Inverse Universe completely reimagines the original color for something new.



170, 199, 223



181, 222, 255



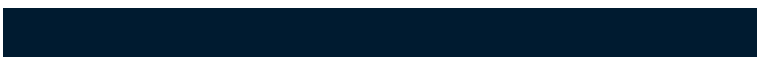
170, 173, 223



101, 107, 112



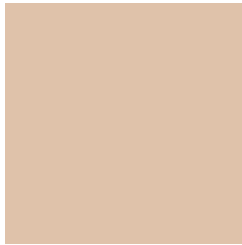
0, 96, 176



0, 27, 48

Previews

White Background



This preview shows how the RGB color 223, 194, 170 looks on a white background.

Color Contrast Check

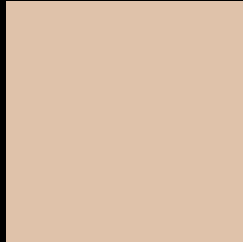
Large Text (above 18pt) WCAG AA × Fail

Any Text WCAG AA × Fail

Large Text (above 18pt) WCAG AAA × Fail

Any Text WCAG AAA × Fail

Black Background



This preview shows how the RGB color 223, 194, 170 looks on a black background.

Color Contrast Check

Large Text (above 18pt) WCAG AA ✓ Pass

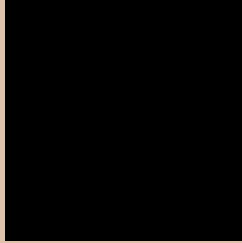
Any Text WCAG AA ✓ Pass

Large Text (above 18pt) WCAG AAA ✓ Pass

Any Text WCAG AAA ✓ Pass

If you want to check with other color combinations, try the [Color Contrast Checker](#).

RGB 223, 194, 170 Background



This preview shows how black text looks on a background with the RGB color 223, 194, 170.



This preview shows how white text looks on a background with the RGB color 223, 194, 170.

Color Blindness Simulation

Color vision deficiency is a very complex topic, and I could not describe the different causes any better than Wikipedia does, so if you want to learn more, you should check out their [article about color blindness](#).

Dichromacy



Original Color
223, 194, 170

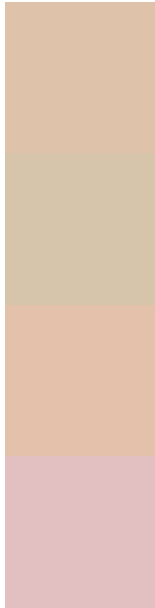
Protanopia
209, 199, 172

Deuteranopia
229, 192, 170



Tritanopia
227, 189, 204

Trichromacy



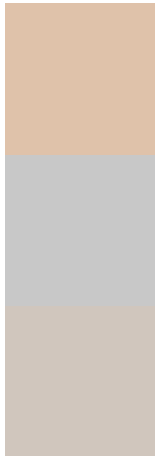
Original Color
223, 194, 170

Protanomaly
214, 197, 171

Deuteranomaly
227, 193, 170

Tritanomaly
226, 191, 192

Monochromacy



Original Color
223, 194, 170

Achromatopsia
200, 200, 200

Achromatomaly
208, 198, 189

CSS Examples

Text

The CSS property to change the color of the text to RGB 223, 194, 170 is called "color". The color property can be set on classes, ids or directly on the HTML element.

This example shows how text in the color `rgb(223, 194, 170)` looks like.

```
.text, #text, p{  
    color:rgb(223, 194, 170)  
}
```

If you want to add a text shadow in that color use the text-shadow property, you can generate a text shadow directly with our [CSS Text Shadow Generator](#).

Here you see how black text with a 4 pixel rgb(223, 194, 170) colored shadow looks like.

```
.shadow{ text-shadow: 4px 4px 2px rgb(223, 194, 170) }
```

Border

The CSS property to change the border of an element to RGB 223, 194, 170 is called "border". The border property can be set on classes, ids or directly on the HTML element.

This example shows the color as border, it can be applied via the CSS property "border" or "border-color".

```
.border, #border, table{ border:4px solid rgb(223, 194, 170) }
```

If only the border color should be changed use the property `border-color`.

```
.border{ border-color:rgb(223, 194, 170) }
```

If you want to add a box shadow in that color use:

Here you see how a box with a 4 pixel `rgb(223, 194, 170)` colored shadow looks like.

```
.boxshadow{ -moz-box-shadow:4px 4px 4px 4px rgb(223, 194, 170); -webkit-box-shadow:4px 4px 4px 4px rgb(223, 194, 170); box-shadow:4px 4px 4px 4px rgb(223, 194, 170) }
```

Background

The CSS property to change the background color of an element to RGB 223, 194, 170 is called "background". The background property can be set on classes, ids or directly on the HTML element.

```
.background, #background, body{  
background: rgb(223, 194, 170) }
```

If only the background color should be changed can be used:

```
.background{ background-color: rgb(223,  
194, 170) }
```

This example shows the color as background, it is applied via the CSS property "background".

To optimize and compress your CSS code, you can use our [online CSS compressor and optimizer](#) based on csstidy. If you want to create a linear or radial gradient as background or border, check our [CSS Gradient Generator](#).

Hey! You found this booklet interesting? Support Converting Colors with the new Membership Option!

The pro membership hides all ads, plus gives you double the colors in the color bucket, and more awesome pro features!

[Learn more, Memberships starting at \\$2.50/m!](#)

**Follow me
on Twitter!**

@ConvertingColor