

Converting Colors

RGB(224, 197, 168)

Have a look what the booklet for
RGB(224, 197, 168) contains.

RGB(224, 197, 168)	3
<i>Conversions</i>	4
<i>Details</i>	6
<i>Harmonies</i>	11
<i>Previews</i>	23
<i>Color Blindness Simulation</i>	26
<i>CSS Examples</i>	29

Color

RGB(224, 197, 168)

Conversions

Conversions Part 1

Format	Color
Hex	E0C5A8
RGB	224, 197, 168
RGB Percent	88%, 77%, 66%
CMY	0.1216, 0.2275, 0.3412
CMYK	0.00, 0.12, 0.25, 0.12
HSL	31°, 47%, 77%
HSV	31°, 25%, 88%
XYZ	57.7746, 58.6070, 45.3130
YIQ	201.7670, 25.4010, -3.2950

Conversions

Conversions Part 2

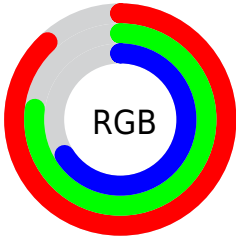
Format	Color
R_{YB}	220, 224, 168
Decimal	14730664
CIE _{Lab}	81.08, 5.12, 18.05
CIE _{LCh}	81, 18.763, 74.161
Yxy	58.6070, 0.3573, 0.3625
Android (android.graphics.Color)	4292920744 (0xFFE0C5A8)
YUV	201.7670, -16.6471, 19.4983
Hunter-Lab	76.5552, 0.7387, 18.4949

Details

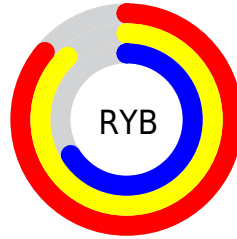
The RGB color **224, 197, 168** is a light color, and the websafe version is hex **CCCC99**. A complement of this color would be **168, 195, 224**, and the grayscale version is **202, 202, 202**.

A 20% lighter version of the original color is **255, 254, 223**, and **168, 143, 116** is the 20% darker color. If you saturate the color by 10%, you get **224, 186, 146**, and if you desaturate by 10%, it is **224, 208, 190**.

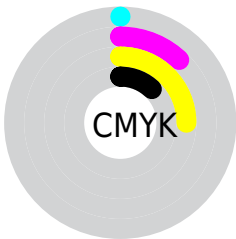
Distribution



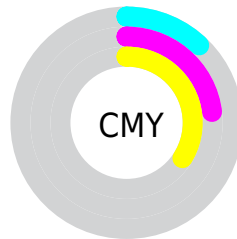
- Red (88%)
- Green (77%)
- Blue (66%)



- Red (86%)
- Yellow (88%)
- Blue (66%)



- Cyan (0%)
- Magenta (12%)
- Yellow (25%)
- Black (12%)




- Cyan (12%)
- Magenta (23%)
- Yellow (34%)

Brightness & Saturation Gradients

These gradients show how the RGB color 224, 197, 168 changes by changing the brightness by 10 percent. The first figure shows a shift by +10% for each color and the second figure -10%.


Similar to the brightness gradients but the following saturation gradients show a change of the RGB color 224, 197, 168 by changing the saturation by 10% instead.

 224, 197, 168

255, 255, 255


 255, 254, 223


 255, 255, 252

 224, 197, 168

 196, 170, 142

 168, 143, 116

 141, 118, 91

 115, 93, 68


 90, 70, 45

 66, 47, 24

 43, 26, 0

 18, 0, 0


 0, 0, 0

 224, 197, 168

 224, 197, 168

 224, 186, 146

 224, 208, 190

 224, 175, 123

 224, 219, 213

 224, 165, 101


 224, 229, 235

 224, 154, 78

 224, 240, 255

 224, 143, 56

 224, 251, 255

 224, 132, 34

 224, 255, 255

 224, 121, 11

 224, 116, 0

Harmonies

Analogous

The Analogous color harmony consists of three colors that are next to each other on the color wheel.



236, 192, 178



224, 197, 168



206, 203, 167

Triad

The Triadic color harmony groups three colors that are evenly spaced from another and form a triangle on the color wheel.



224, 197, 168



156, 212, 209



215, 194, 227

Complementary

The Complementary color scheme is a pair of colors which are on the opposite of each other on the color wheel.



224, 197, 168



168, 195, 224

Split Complementary

Split-complementary colors differ from the complementary color scheme. The scheme consists of three colors, the original color and two neighbors of the complement color.



193, 200, 235



224, 197, 168



157, 210, 225

Square

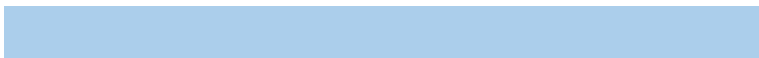
The Square scheme is like the rectangle color scheme, but the four colors are evenly spaced on the color wheel.



224, 197, 168



168, 211, 191



171, 206, 235



231, 190, 211

Rectangle

The Rectangle color scheme consists of four colors that form a rectangle on the color wheel.



224, 197, 168



193, 206, 172



171, 206, 235



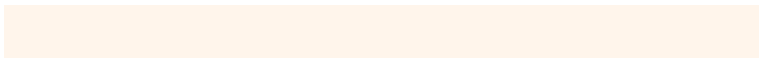
208, 196, 230

Sweetspot

The Sweet Spot groups the original color and five complimentary colors.



224, 197, 168



255, 245, 235



224, 168, 195



128, 121, 115



0, 0, 0



128, 128, 128

Same Dimension

The Same Dimension uses a secret algorithm to generate beautiful new colors.



224, 197, 168



255, 218, 179



223, 224, 168



112, 107, 101



176, 91, 0



48, 25, 0

Inverse Universe

The Inverse Universe completely reimagines the original color for something new.



168, 195, 224



179, 215, 255



169, 168, 224



101, 106, 112



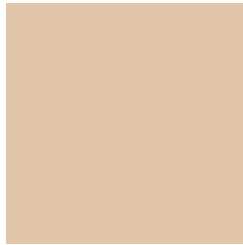
0, 85, 176



0, 23, 48

Previews

White Background



This preview shows how the RGB color 224, 197, 168 looks on a white background.

Color Contrast Check

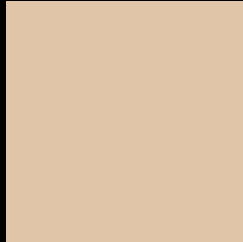
Large Text (above 18pt) WCAG AA × Fail

Any Text WCAG AA × Fail

Large Text (above 18pt) WCAG AAA × Fail

Any Text WCAG AAA × Fail

Black Background



This preview shows how the RGB color 224, 197, 168 looks on a black background.

Color Contrast Check

Large Text (above 18pt) WCAG AA ✓ Pass

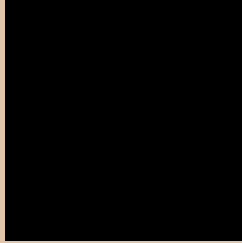
Any Text WCAG AA ✓ Pass

Large Text (above 18pt) WCAG AAA ✓ Pass

Any Text WCAG AAA ✓ Pass

If you want to check with other color combinations, try the [Color Contrast Checker](#).

RGB 224, 197, 168 Background



This preview shows how black text looks on a background with the RGB color 224, 197, 168.



This preview shows how white text looks on a background with the RGB color 224, 197, 168.

Color Blindness Simulation

Color vision deficiency is a very complex topic, and I could not describe the different causes any better than Wikipedia does, so if you want to learn more, you should check out their [article about color blindness](#).


Dichromacy



Original Color
224, 197, 168

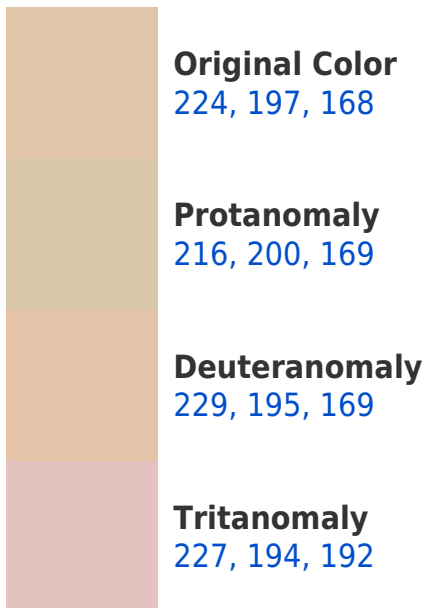
Protanopia
212, 201, 170

Deuteranopia
232, 194, 169



Tritanopia
229, 192, 206

Trichromacy



Monochromacy



CSS Examples

Text

The CSS property to change the color of the text to RGB 224, 197, 168 is called "color". The color property can be set on classes, ids or directly on the HTML element.

This example shows how text in the color `rgb(224, 197, 168)` looks like.

```
.text, #text, p{  
    color:rgb(224, 197, 168)  
}
```

If you want to add a text shadow in that color use the text-shadow property, you can generate a text shadow directly with our [CSS Text Shadow Generator](#).

Here you see how black text with a 4 pixel rgb(224, 197, 168) colored shadow looks like.

```
.shadow{ text-shadow: 4px 4px 2px rgb(224, 197, 168) }
```

Border

The CSS property to change the border of an element to RGB 224, 197, 168 is called "border". The border property can be set on classes, ids or directly on the HTML element.

This example shows the color as border, it can be applied via the CSS property "border" or "border-color".

```
.border, #border, table{ border:4px solid rgb(224, 197, 168) }
```

If only the border color should be changed use the property `border-color`.

```
.border{ border-color:rgb(224, 197, 168) }
```

If you want to add a box shadow in that color use:

Here you see how a box with a 4 pixel `rgb(224, 197, 168)` colored shadow looks like.

```
.boxshadow{ -moz-box-shadow:4px 4px 4px  
4px rgb(224, 197, 168); -webkit-box-  
shadow:4px 4px 4px 4px rgb(224, 197, 168);  
box-shadow:4px 4px 4px 4px rgb(224, 197,  
168) }
```

Background

The CSS property to change the background color of an element to RGB 224, 197, 168 is called "background". The background property can be set on classes, ids or directly on the HTML element.

```
.background, #background, body{  
background: rgb(224, 197, 168) }
```

If only the background color should be changed can be used:

```
.background{ background-color: rgb(224,  
197, 168) }
```

This example shows the color as background, it is applied via the CSS property "background".

To optimize and compress your CSS code, you can use our [online CSS compressor and optimizer](#) based on csstidy. If you want to create a linear or radial gradient as background or border, check our [CSS Gradient Generator](#).

Hey! You found this booklet interesting? Support Converting Colors with the new Membership Option!

The pro membership hides all ads, plus gives you double the colors in the color bucket, and more awesome pro features!

[Learn more, Memberships starting at \\$2.50/m!](#)

**Follow me
on Twitter!**

@ConvertingColor