

# Converting Colors

RGB(224, 197, 199)

Have a look what the booklet for  
RGB(224, 197, 199) contains.

<b>RGB(224, 197, 199)</b> .....	3
<b><i>Conversions</i></b> .....	4
<b><i>Details</i></b> .....	6
<b><i>Harmonies</i></b> .....	11
<b><i>Previews</i></b> .....	23
<b><i>Color Blindness Simulation</i></b> .....	26
<b><i>CSS Examples</i></b> .....	29

# **Color**

**RGB(224, 197, 199)**

# Conversions

## Conversions Part 1

Format	Color
Hex	E0C5C7
RGB	224, 197, 199
RGB Percent	88%, 77%, 78%
CMY	0.1216, 0.2275, 0.2196
CMYK	0.00, 0.12, 0.11, 0.12
HSL	356°, 30%, 83%
HSV	356°, 12%, 88%
XYZ	61.0155, 59.9033, 62.3795
YIQ	205.3010, 15.4500, 6.3460

# Conversions

## Conversions Part 2

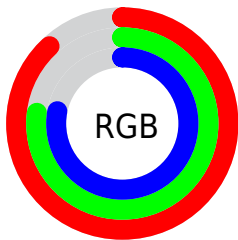
<b>Format</b>	<b>Color</b>
R <sub>Y</sub> B	224, 197, 199
Decimal	14730695
CIE Lab	81.79, 9.83, 2.49
CIE LCh	82, 10.144, 14.196
Yxy	59.9033, 0.3329, 0.3268
Android (android.graphics.Color)	4292920775 (0xFFE0C5C7)
YUV	205.3010, -3.1064, 16.3990
Hunter-Lab	77.3972, 5.2740, 6.3924

# Details

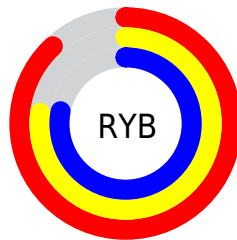
The RGB color **224, 197, 199** is a light color, and the websafe version is hex **CCCCCC**. A complement of this color would be **197, 224, 222**, and the grayscale version is **205, 205, 205**.

A 20% lighter version of the original color is **255, 254, 255**, and **169, 143, 145** is the 20% darker color. If you saturate the color by 10%, you get **224, 175, 178**, and if you desaturate by 10%, it is **224, 219, 220**.

# Distribution



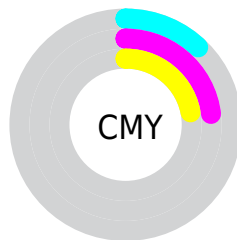
- Red (88%)
- Green (77%)
- Blue (78%)



- Red (88%)
- Yellow (77%)
- Blue (78%)



- Cyan (0%)
- Magenta (12%)
- Yellow (11%)
- Black (12%)



- Cyan (12%)
- Magenta (23%)
- Yellow (22%)

# Brightness & Saturation Gradients

These gradients show how the RGB color 224, 197, 199 changes by changing the brightness by 10 percent. The first figure shows a shift by +10% for each color and the second figure -10%.


Similar to the brightness gradients but the following saturation gradients show a change of the RGB color 224, 197, 199 by changing the saturation by 10% instead.




 224, 197, 199

255, 255, 255


255, 254, 255


 224, 197, 199

 196, 170, 172

 169, 143, 145

 142, 118, 120

 116, 93, 95

 91, 69, 71

 68, 47, 49


 45, 26, 28

 26, 0, 1


 0, 0, 0

 224, 197, 199


 224, 197, 199

 224, 175, 178


 224, 219, 220

 224, 152, 158

 224, 242, 240

 224, 130, 137


 224, 255, 255

 224, 107, 116

 224, 85, 95

 224, 63, 75

 224, 40, 54

 224, 18, 33

 224, 0, 17

# Harmonies

## Analogous

The Analogous color harmony consists of three colors that are next to each other on the color wheel.



220, 197, 209



224, 197, 199



223, 198, 190

# Triad

The Triadic color harmony groups three colors that are evenly spaced from another and form a triangle on the color wheel.



224, 197, 199



195, 207, 190



188, 206, 221

# Complementary

The Complementary color scheme is a pair of colors which are on the opposite of each other on the color wheel.



224, 197, 199



197, 224, 222

# Split Complementary

Split-complementary colors differ from the complementary color scheme. The scheme consists of three colors, the original color and two neighbors of the complement color.



181, 208, 216



224, 197, 199



186, 209, 198

# Square

The Square scheme is like the rectangle color scheme, but the four colors are evenly spaced on the color wheel.



224, 197, 199



206, 204, 185



180, 209, 208



199, 203, 222

# Rectangle

The Rectangle color scheme consists of four colors that form a rectangle on the color wheel.



224, 197, 199



219, 200, 186



180, 209, 208



185, 207, 220



# Sweetspot

The Sweet Spot groups the original color and five complimentary colors.



224, 197, 199



255, 245, 246



222, 197, 224



128, 121, 122



0, 0, 0



128, 128, 128



# Same Dimension

The Same Dimension uses a secret algorithm to generate beautiful new colors.



224, 197, 199



255, 219, 222



224, 208, 197



112, 101, 102



176, 0, 13



48, 0, 4



# Inverse Universe

The Inverse Universe completely reimagines the original color for something new.



224, 197, 199



255, 219, 222



197, 213, 224



112, 101, 102



176, 0, 13

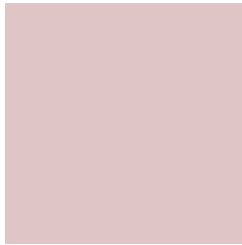


48, 0, 4



# Previews

## White Background



This preview shows how the RGB color 224, 197, 199 looks on a white background.

## Color Contrast Check

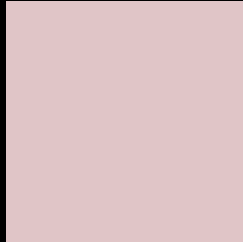
Large Text (above 18pt) WCAG AA × Fail

Any Text WCAG AA × Fail

Large Text (above 18pt) WCAG AAA × Fail

Any Text WCAG AAA × Fail

# Black Background



This preview shows how the RGB color 224, 197, 199 looks on a black background.

## Color Contrast Check

Large Text (above 18pt) WCAG AA ✓ Pass

Any Text WCAG AA ✓ Pass

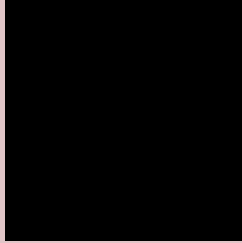
Large Text (above 18pt) WCAG AAA ✓ Pass

Any Text WCAG AAA ✓ Pass

If you want to check with other color combinations, try the [Color Contrast Checker](#).



## RGB 224, 197, 199 Background



This preview shows how black text looks on a background with the RGB color 224, 197, 199.



This preview shows how white text looks on a background with the RGB color 224, 197, 199.

# Color Blindness Simulation

Color vision deficiency is a very complex topic, and I could not describe the different causes any better than Wikipedia does, so if you want to learn more, you should check out their [article about color blindness](#).


## Dichromacy



**Original Color**  
224, 197, 199

**Protanopia**  
207, 202, 202

**Deuteranopia**  
225, 197, 199



**Tritanopia**  
226, 195, 210

# Trichromacy



**Original Color**

224, 197, 199

**Protanomaly**

213, 200, 201

**Deuteranomaly**

225, 197, 199

**Tritanomaly**

225, 196, 206

# Monochromacy



**Original Color**

224, 197, 199

**Achromatopsia**

205, 205, 205

**Achromatomaly**

212, 202, 203

# CSS Examples

## Text

The CSS property to change the color of the text to RGB 224, 197, 199 is called "color". The color property can be set on classes, ids or directly on the HTML element.

This example shows how text in the color `rgb(224, 197, 199)` looks like.

```
.text, #text, p{  
    color:rgb(224, 197, 199)  
}
```

If you want to add a text shadow in that color use the text-shadow property, you can generate a text shadow directly with our [CSS Text Shadow Generator](#).

Here you see how black text with a 4 pixel rgb(224, 197, 199) colored shadow looks like.

```
.shadow{ text-shadow: 4px 4px 2px rgb(224, 197, 199) }
```

## Border

The CSS property to change the border of an element to RGB 224, 197, 199 is called "border". The border property can be set on classes, ids or directly on the HTML element.

This example shows the color as border, it can be applied via the CSS property "border" or "border-color".

```
.border, #border, table{ border:4px solid rgb(224, 197, 199) }
```

If only the border color should be changed use the property `border-color`.

```
.border{ border-color:rgb(224, 197, 199) }
```

If you want to add a box shadow in that color use:

Here you see how a box with a 4 pixel `rgb(224, 197, 199)` colored shadow looks like.

```
.boxshadow{ -moz-box-shadow:4px 4px 4px 4px rgb(224, 197, 199); -webkit-box-shadow:4px 4px 4px 4px rgb(224, 197, 199); box-shadow:4px 4px 4px 4px rgb(224, 197, 199) }
```

# Background

The CSS property to change the background color of an element to RGB 224, 197, 199 is called "background". The background property can be set on classes, ids or directly on the HTML element.

```
.background, #background, body{  
background: rgb(224, 197, 199) }
```

If only the background color should be changed can be used:

```
.background{ background-color: rgb(224,  
197, 199) }
```

This example shows the color as background, it is applied via the CSS property "background".

To optimize and compress your CSS code, you can use our [online CSS compressor and optimizer](#) based on csstidy. If you want to create a linear or radial gradient as background or border, check our [CSS Gradient Generator](#).



Hey! You found this booklet interesting? Support Converting Colors with the new Membership Option!

The pro membership hides all ads, plus gives you double the colors in the color bucket, and more awesome pro features!

**[Learn more, Memberships starting at \\$2.50/m!](#)**

**Follow me  
on Twitter!**

@ConvertingColor