

Converting Colors

RGB(224, 207, 191)

Have a look what the booklet for
RGB(224, 207, 191) contains.

RGB(224, 207, 191)	3
<i>Conversions</i>	4
<i>Details</i>	6
<i>Harmonies</i>	11
<i>Previews</i>	23
<i>Color Blindness Simulation</i>	26
<i>CSS Examples</i>	29

Color

RGB(224, 207, 191)

Conversions

Conversions Part 1

Format	Color
Hex	E0CFBF
RGB	224, 207, 191
RGB Percent	88%, 81%, 75%
CMY	0.1216, 0.1882, 0.2510
CMYK	0.00, 0.08, 0.15, 0.12
HSL	29°, 35%, 81%
HSV	29°, 15%, 88%
XYZ	62.4573, 64.2345, 58.3969
YIQ	210.2590, 15.2680, -1.3720

Conversions

Conversions Part 2

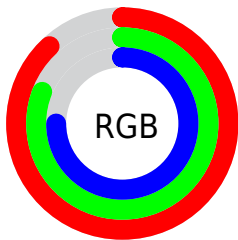
Format	Color
R_{YB}	224, 222, 191
Decimal	14733247
CIE _{Lab}	84.09, 3.28, 10.07
CIE _{LCh}	84, 10.592, 71.945
Yxy	64.2345, 0.3374, 0.3470
Android (android.graphics.Color)	4292923327 (0xFFE0CFBF)
YUV	210.2590, -9.4947, 12.0509
Hunter-Lab	80.1464, -1.1532, 12.9022

Details

The RGB color **224, 207, 191** is a light color, and the websafe version is hex **CCCCCC**. A complement of this color would be **191, 208, 224**, and the grayscale version is **210, 210, 210**.

A 20% lighter version of the original color is **255, 255, 247**, and **169, 153, 138** is the 20% darker color. If you saturate the color by 10%, you get **224, 195, 169**, and if you desaturate by 10%, it is **224, 219, 213**.

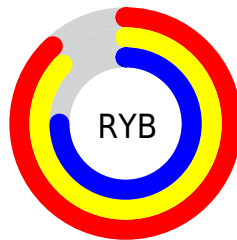
Distribution



Red (88%)

Green (81%)

Blue (75%)



Red (88%)

Yellow (87%)

Blue (75%)

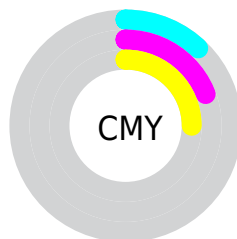


Cyan (0%)

Magenta (8%)

Yellow (15%)

Black (12%)



Cyan (12%)

Magenta (19%)

Yellow (25%)

Brightness & Saturation Gradients

These gradients show how the RGB color 224, 207, 191 changes by changing the brightness by 10 percent. The first figure shows a shift by +10% for each color and the second figure -10%.


Similar to the brightness gradients but the following saturation gradients show a change of the RGB color 224, 207, 191 by changing the saturation by 10% instead.

 224, 207, 191

255, 255, 255

 255, 255, 247


 224, 207, 191

 196, 179, 164

 169, 153, 138

 142, 127, 112

 116, 102, 88

 91, 78, 64

 68, 55, 42

 45, 34, 22

 25, 12, 0

 0, 0, 0

 224, 207, 191


 224, 207, 191

 224, 195, 169

 224, 219, 213

 224, 184, 146


 224, 230, 236

 224, 172, 124


 224, 242, 255


 224, 161, 101


 224, 253, 255


 224, 149, 79

 224, 255, 255

 224, 138, 57

 224, 126, 34

 224, 115, 12

 224, 109, 0

Harmonies

Analogous

The Analogous color harmony consists of three colors that are next to each other on the color wheel.



230, 204, 197



224, 207, 191



214, 210, 190

Triad

The Triadic color harmony groups three colors that are evenly spaced from another and form a triangle on the color wheel.



224, 207, 191



186, 216, 213



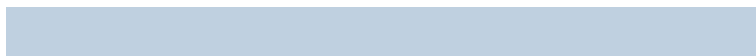
217, 206, 225

Complementary

The Complementary color scheme is a pair of colors which are on the opposite of each other on the color wheel.



224, 207, 191



191, 208, 224

Split Complementary

Split-complementary colors differ from the complementary color scheme. The scheme consists of three colors, the original color and two neighbors of the complement color.



204, 209, 229



224, 207, 191



186, 215, 223

Square

The Square scheme is like the rectangle color scheme, but the four colors are evenly spaced on the color wheel.



224, 207, 191



192, 215, 203



193, 212, 228



226, 204, 216

Rectangle

The Rectangle color scheme consists of four colors that form a rectangle on the color wheel.



224, 207, 191



206, 212, 193



193, 212, 228



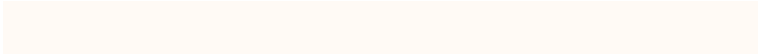
213, 207, 227

Sweetspot

The Sweet Spot groups the original color and five complimentary colors.



224, 207, 191



255, 250, 245



224, 191, 208



128, 124, 121



0, 0, 0



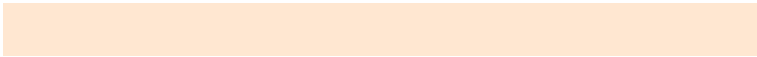
128, 128, 128

Same Dimension

The Same Dimension uses a secret algorithm to generate beautiful new colors.



224, 207, 191



255, 231, 209



224, 223, 191



112, 106, 101



176, 85, 0



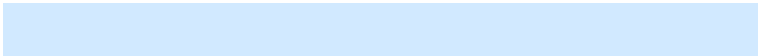
48, 23, 0

Inverse Universe

The Inverse Universe completely reimagines the original color for something new.



191, 208, 224



209, 233, 255



191, 192, 224



101, 107, 112



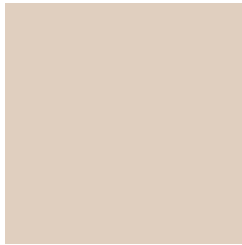
0, 91, 176



0, 25, 48

Previews

White Background



This preview shows how the RGB color 224, 207, 191 looks on a white background.

Color Contrast Check

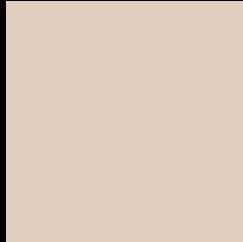
Large Text (above 18pt) WCAG AA × Fail

Any Text WCAG AA × Fail

Large Text (above 18pt) WCAG AAA × Fail

Any Text WCAG AAA × Fail

Black Background



This preview shows how the RGB color 224, 207, 191 looks on a black background.

Color Contrast Check

Large Text (above 18pt) WCAG AA ✓ Pass

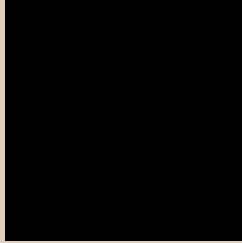
Any Text WCAG AA ✓ Pass

Large Text (above 18pt) WCAG AAA ✓ Pass

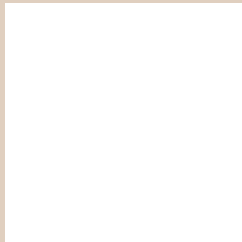
Any Text WCAG AAA ✓ Pass

If you want to check with other color combinations, try the [Color Contrast Checker](#).

RGB 224, 207, 191 Background



This preview shows how black text looks on a background with the RGB color 224, 207, 191.



This preview shows how white text looks on a background with the RGB color 224, 207, 191.

Color Blindness Simulation

Color vision deficiency is a very complex topic, and I could not describe the different causes any better than Wikipedia does, so if you want to learn more, you should check out their [article about color blindness](#).

Dichromacy



Original Color
224, 207, 191

Protanopia
218, 209, 192

Deuteranopia
237, 202, 192



Tritanopia
228, 203, 219

Trichromacy



Original Color

224, 207, 191

Protanomaly

220, 208, 192

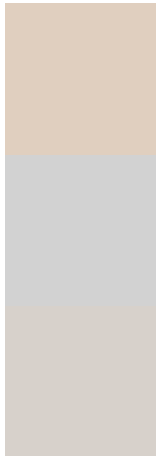
Deuteranomaly

232, 204, 192

Tritanomaly

227, 204, 209

Monochromacy



Original Color

224, 207, 191

Achromatopsia

210, 210, 210

Achromatomaly

215, 209, 203

CSS Examples

Text

The CSS property to change the color of the text to RGB 224, 207, 191 is called "color". The color property can be set on classes, ids or directly on the HTML element.

This example shows how text in the color `rgb(224, 207, 191)` looks like.

```
.text, #text, p{  
    color:rgb(224, 207, 191)  
}
```

If you want to add a text shadow in that color use the text-shadow property, you can generate a text shadow directly with our [CSS Text Shadow Generator](#).

Here you see how black text with a 4 pixel rgb(224, 207, 191) colored shadow looks like.

```
.shadow{ text-shadow: 4px 4px 2px rgb(224, 207, 191) }
```

Border

The CSS property to change the border of an element to RGB 224, 207, 191 is called "border". The border property can be set on classes, ids or directly on the HTML element.

This example shows the color as border, it can be applied via the CSS property "border" or "border-color".

```
.border, #border, table{ border:4px solid rgb(224, 207, 191) }
```

If only the border color should be changed use the property border-color.

```
.border{ border-color:rgb(224, 207, 191) }
```

If you want to add a box shadow in that color use:

Here you see how a box with a 4 pixel rgb(224, 207, 191) colored shadow looks like.

```
.boxshadow{ -moz-box-shadow:4px 4px 4px  
4px rgb(224, 207, 191); -webkit-box-  
shadow:4px 4px 4px 4px rgb(224, 207, 191);  
box-shadow:4px 4px 4px 4px rgb(224, 207,  
191) }
```

Background

The CSS property to change the background color of an element to RGB 224, 207, 191 is called "background". The background property can be set on classes, ids or directly on the HTML element.

```
.background, #background, body{  
background: rgb(224, 207, 191) }
```

If only the background color should be changed can be used:

```
.background{ background-color: rgb(224,  
207, 191) }
```

This example shows the color as background, it is applied via the CSS property "background".

To optimize and compress your CSS code, you can use our [online CSS compressor and optimizer](#) based on csstidy. If you want to create a linear or radial gradient as background or border, check our [CSS Gradient Generator](#).

Hey! You found this booklet interesting? Support Converting Colors with the new Membership Option!

The pro membership hides all ads, plus gives you double the colors in the color bucket, and more awesome pro features!

[Learn more, Memberships starting at \\$2.50/m!](#)

**Follow me
on Twitter!**

@ConvertingColor