

Converting Colors

RGB(224, 84, 131)

Have a look what the booklet for
RGB(224, 84, 131) contains.

RGB(224, 84, 131)	3
<i>Conversions</i>	4
<i>Details</i>	6
<i>Harmonies</i>	11
<i>Previews</i>	23
<i>Color Blindness Simulation</i>	26
<i>CSS Examples</i>	29

Color

RGB(224, 84, 131)

Conversions

Conversions Part 1

Format	Color
Hex	E05483
RGB	224, 84, 131
RGB Percent	88%, 33%, 51%
CMY	0.1216, 0.6706, 0.4863
CMYK	0.00, 0.63, 0.42, 0.12
HSL	340°, 69%, 60%
HSV	340°, 63%, 88%
XYZ	38.0075, 23.8266, 24.0685
YIQ	131.2180, 68.3530, 44.2970

Conversions

Conversions Part 2

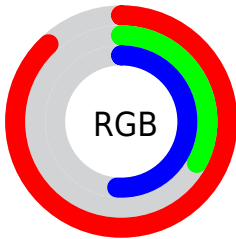
Format	Color
R_{YB}	224, 84, 131
Decimal	14701699
CIE _{Lab}	55.91, 58.39, 3.06
CIE _{LCh}	56, 58.474, 3.001
Yxy	23.8266, 0.4424, 0.2774
Android (android.graphics.Color)	4292891779 (0xFFE05483)
YUV	131.2180, -0.1075, 81.3698
Hunter-Lab	48.8125, 53.5658, 4.9340

Details

The RGB color **224, 84, 131** is a light color, and the websafe version is hex **FF6699**. The color can be described as light muted rose. A complement of this color would be **84, 224, 177**, and the grayscale version is **131, 131, 131**.

A 20% lighter version of the original color is **255, 140, 184**, and **164, 19, 82** is the 20% darker color. If you saturate the color by 10%, you get **224, 62, 116**, and if you desaturate by 10%, it is **224, 106, 146**.

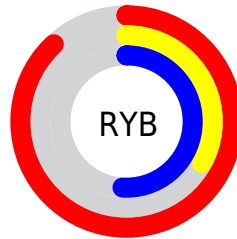
Distribution



Red (88%)

Green (33%)

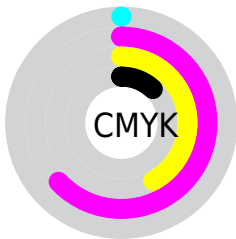
Blue (51%)



Red (88%)

Yellow (33%)

Blue (51%)

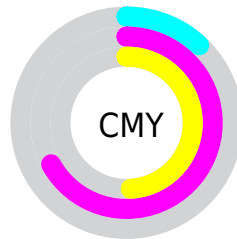


Cyan (0%)

Magenta (63%)

Yellow (42%)

Black (12%)



Cyan (12%)

Magenta (67%)

Yellow (49%)

Brightness & Saturation Gradients

These gradients show how the RGB color 224, 84, 131 changes by changing the brightness by 10 percent. The first figure shows a shift by +10% for each color and the second figure -10%.


Similar to the brightness gradients but the following saturation gradients show a change of the RGB color 224, 84, 131 by changing the saturation by 10% instead.

 224, 84, 131

 224, 84, 131

255, 255, 255

 194, 55, 106

 255, 140, 184

 164, 19, 82

 255, 168, 211

 135, 0, 59

 255, 197, 240

 106, 0, 38

 255, 226, 255

 78, 0, 17

 51, 0, 2

 0, 0, 0

 224, 84, 131

 224, 84, 131

 224, 62, 116

 224, 106, 146

■ 224, 39, 101

■ 224, 129, 161

■ 224, 17, 86

■ 224, 151, 176

■ 224, 0, 75

■ 224, 174, 191

■ 224, 196, 205

■ 224, 218, 220

■ 224, 241, 235

■ 224, 255, 250

■ 224, 255, 255

Harmonies

Analogous

The Analogous color harmony consists of three colors that are next to each other on the color wheel.



199, 96, 181



224, 84, 131



221, 93, 82

Triad

The Triadic color harmony groups three colors that are evenly spaced from another and form a triangle on the color wheel.



224, 84, 131



103, 147, 40



0, 151, 224

Complementary

The Complementary color scheme is a pair of colors which are on the opposite of each other on the color wheel.



224, 84, 131



84, 224, 177

Split Complementary

Split-complementary colors differ from the complementary color scheme. The scheme consists of three colors, the original color and two neighbors of the complement color.



0, 157, 188



224, 84, 131



0, 155, 85

Square

The Square scheme is like the rectangle color scheme, but the four colors are evenly spaced on the color wheel.



224, 84, 131



155, 133, 14



0, 158, 138



0, 138, 236

Rectangle

The Rectangle color scheme consists of four colors that form a rectangle on the color wheel.



224, 84, 131



206, 107, 53



0, 158, 138



0, 154, 214

Sweetspot

The Sweet Spot groups the original color and five complimentary colors.



224, 84, 131



255, 207, 223



175, 84, 224



128, 98, 108



0, 0, 0



128, 128, 128

Same Dimension

The Same Dimension uses a secret algorithm to generate beautiful new colors.



224, 84, 131



255, 64, 128



224, 105, 84



112, 101, 105



176, 0, 59



48, 0, 16

Inverse Universe

The Inverse Universe completely reimagines the original color for something new.



224, 84, 131



255, 64, 128



84, 203, 224



112, 101, 105



176, 0, 59



48, 0, 16

Previews

White Background



This preview shows how the RGB color 224, 84, 131 looks on a white background.

Color Contrast Check

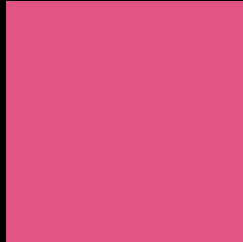
Large Text (above 18pt) WCAG AA ✓ Pass

Any Text WCAG AA × Fail

Large Text (above 18pt) WCAG AAA × Fail

Any Text WCAG AAA × Fail

Black Background



This preview shows how the RGB color 224, 84, 131 looks on a black background.

Color Contrast Check

Large Text (above 18pt) WCAG AA ✓ Pass

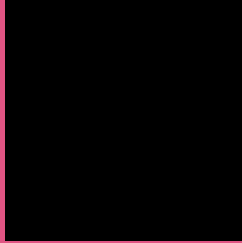
Any Text WCAG AA ✓ Pass

Large Text (above 18pt) WCAG AAA ✓ Pass

Any Text WCAG AAA × Fail

If you want to check with other color combinations, try the [Color Contrast Checker](#).

RGB 224, 84, 131 Background



This preview shows how black text looks on a background with the RGB color 224, 84, 131.

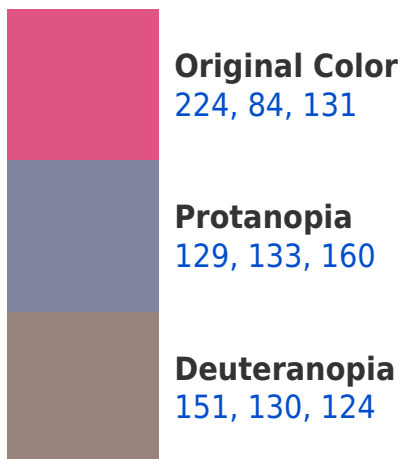


This preview shows how white text looks on a background with the RGB color 224, 84, 131.

Color Blindness Simulation

Color vision deficiency is a very complex topic, and I could not describe the different causes any better than Wikipedia does, so if you want to learn more, you should check out their [article about color blindness](#).

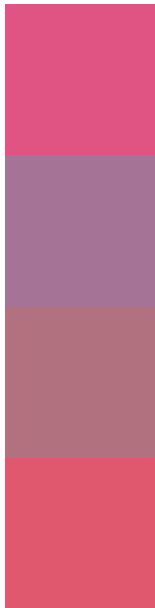
Dichromacy





Tritanopia
222, 91, 97

Trichromacy



Original Color
224, 84, 131

Protanomaly
164, 115, 149

Deuteranomaly
178, 113, 127

Tritanomaly
223, 88, 109

Monochromacy



Original Color
224, 84, 131

Achromatopsia
131, 131, 131

Achromatomaly
165, 114, 131

CSS Examples

Text

The CSS property to change the color of the text to RGB 224, 84, 131 is called "color". The color property can be set on classes, ids or directly on the HTML element.

This example shows how text in the color rgb(224, 84, 131) looks like.

```
.text, #text, p{  
    color:rgb(224, 84, 131)  
}
```

If you want to add a text shadow in that color use the text-shadow property, you can generate a text shadow directly with our [CSS Text Shadow Generator](#).

Here you see how black text with a 4 pixel rgb(224, 84, 131) colored shadow looks like.

```
.shadow{ text-shadow: 4px 4px 2px rgb(224, 84, 131) }
```

Border

The CSS property to change the border of an element to RGB 224, 84, 131 is called "border". The border property can be set on classes, ids or directly on the HTML element.

This example shows the color as border, it can be applied via the CSS property "border" or "border-color".

```
.border, #border, table{ border:4px solid rgb(224, 84, 131) }
```

If only the border color should be changed use the property `border-color`.

```
.border{ border-color:rgb(224, 84, 131) }
```

If you want to add a box shadow in that color use:

Here you see how a box with a 4 pixel `rgb(224, 84, 131)` colored shadow looks like.

```
.boxshadow{ -moz-box-shadow:4px 4px 4px  
4px rgb(224, 84, 131); -webkit-box-  
shadow:4px 4px 4px 4px rgb(224, 84, 131);  
box-shadow:4px 4px 4px 4px rgb(224, 84,  
131) }
```

Background

The CSS property to change the background color of an element to RGB 224, 84, 131 is called "background". The background property can be set on classes, ids or directly on the HTML element.

```
.background, #background, body{  
background: rgb(224, 84, 131) }
```

If only the background color should be changed can be used:

```
.background{ background-color: rgb(224, 84,  
131) }
```

This example shows the color as background, it is applied via the CSS property "background".

To optimize and compress your CSS code, you can use our [online CSS compressor and optimizer](#) based on csstidy. If you want to create a linear or radial gradient as background or border, check our [CSS Gradient Generator](#).

Hey! You found this booklet interesting? Support Converting Colors with the new Membership Option!

The pro membership hides all ads, plus gives you double the colors in the color bucket, and more awesome pro features!

[Learn more, Memberships starting at \\$2.50/m!](#)

**Follow me
on Twitter!**

@ConvertingColor