

Converting Colors

RGB(225, 117, 146)

Have a look what the booklet for
RGB(225, 117, 146) contains.

RGB(225, 117, 146)	3
<i>Conversions</i>	4
<i>Details</i>	6
<i>Harmonies</i>	11
<i>Previews</i>	23
<i>Color Blindness Simulation</i>	26
<i>CSS Examples</i>	29

Color

RGB(225, 117, 146)

Conversions

Conversions Part 1

Format	Color
Hex	E17592
RGB	225, 117, 146
RGB Percent	88%, 46%, 57%
CMY	0.1176, 0.5412, 0.4275
CMYK	0.00, 0.48, 0.35, 0.12
HSL	344°, 64%, 67%
HSV	344°, 48%, 88%
XYZ	42.6009, 30.8055, 30.8949
YIQ	152.5980, 55.0590, 31.9150

Conversions

Conversions Part 2

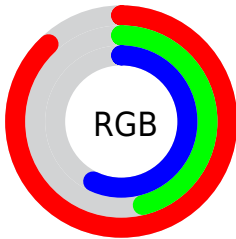
Format	Color
R_{YB}	225, 117, 146
Decimal	14775698
CIE _{Lab}	62.34, 44.96, 3.65
CIE _{LCh}	62, 45.108, 4.643
Yxy	30.8055, 0.4084, 0.2954
Android (android.graphics.Color)	4292965778 (0xFFE17592)
YUV	152.5980, -3.2528, 63.4966
Hunter-Lab	55.5027, 39.8776, 5.8488

Details

The RGB color **225, 117, 146** is a light color, and the websafe version is hex **CC6699**. A complement of this color would be **117, 225, 196**, and the grayscale version is **153, 153, 153**.

A 20% lighter version of the original color is **255, 171, 200**, and **167, 64, 96** is the 20% darker color. If you saturate the color by 10%, you get **225, 95, 130**, and if you desaturate by 10%, it is **225, 139, 162**.

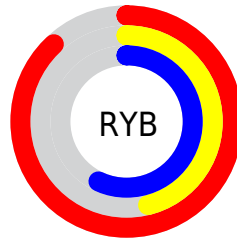
Distribution



Red (88%)

Green (46%)

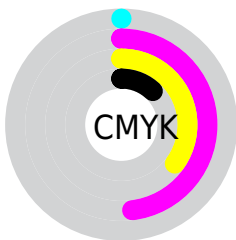
Blue (57%)



Red (88%)

Yellow (46%)

Blue (57%)

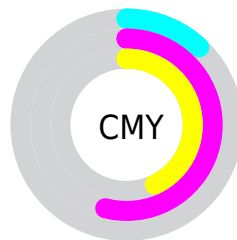


Cyan (0%)

Magenta (48%)

Yellow (35%)

Black (12%)



Cyan (12%)

Magenta (54%)

Yellow (43%)

Brightness & Saturation Gradients

These gradients show how the RGB color 225, 117, 146 changes by changing the brightness by 10 percent. The first figure shows a shift by +10% for each color and the second figure -10%.

Similar to the brightness gradients but the following saturation gradients show a change of the RGB color 225, 117, 146 by changing the saturation by 10% instead.

 225, 117, 146

255, 255, 255

 255, 171, 200

 255, 200, 228

 255, 228, 255

 225, 117, 146

 196, 91, 120

 167, 64, 96

 138, 37, 72

 110, 2, 50


 83, 0, 29

 58, 0, 2

 25, 0, 1

 0, 0, 0

 225, 117, 146

 225, 117, 146

■ 225, 95, 130

■ 225, 139, 162

■ 225, 72, 113

■ 225, 162, 179

■ 225, 49, 97

■ 225, 185, 195

■ 225, 27, 80

■ 225, 207, 212

■ 225, 5, 64

■ 225, 230, 228

■ 225, 0, 60

■ 225, 252, 245

■ 225, 255, 255

Harmonies

Analogous

The Analogous color harmony consists of three colors that are next to each other on the color wheel.



205, 123, 186



225, 117, 146



223, 123, 107

Triad

The Triadic color harmony groups three colors that are evenly spaced from another and form a triangle on the color wheel.



225, 117, 146



127, 162, 82



0, 164, 222

Complementary

The Complementary color scheme is a pair of colors which are on the opposite of each other on the color wheel.



225, 117, 146



117, 225, 196

Split Complementary

Split-complementary colors differ from the complementary color scheme. The scheme consists of three colors, the original color and two neighbors of the complement color.



0, 170, 195



225, 117, 146



73, 168, 115

Square

The Square scheme is like the rectangle color scheme, but the four colors are evenly spaced on the color wheel.



225, 117, 146



169, 151, 68



0, 171, 156



93, 153, 230

Rectangle

The Rectangle color scheme consists of four colors that form a rectangle on the color wheel.



225, 117, 146



211, 131, 86



0, 171, 156



0, 166, 215

Sweetspot

The Sweet Spot groups the original color and five complimentary colors.



225, 117, 146



255, 219, 229



194, 117, 225



128, 106, 112



0, 0, 0



128, 128, 128

Same Dimension

The Same Dimension uses a secret algorithm to generate beautiful new colors.



225, 117, 146



255, 107, 147



225, 140, 117



112, 101, 104



176, 0, 47



48, 0, 13

Inverse Universe

The Inverse Universe completely reimagines the original color for something new.



225, 117, 146



255, 107, 147



117, 202, 225



112, 101, 104



176, 0, 47



48, 0, 13

Previews

White Background



This preview shows how the RGB color 225, 117, 146 looks on a white background.

Color Contrast Check

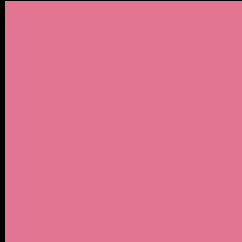
Large Text (above 18pt) WCAG AA × Fail

Any Text WCAG AA × Fail

Large Text (above 18pt) WCAG AAA × Fail

Any Text WCAG AAA × Fail

Black Background



This preview shows how the RGB color 225, 117, 146 looks on a black background.

Color Contrast Check

Large Text (above 18pt) WCAG AA ✓ Pass

Any Text WCAG AA ✓ Pass

Large Text (above 18pt) WCAG AAA ✓ Pass

Any Text WCAG AAA ✓ Pass

If you want to check with other color combinations, try the [Color Contrast Checker](#).

RGB 225, 117, 146 Background



This preview shows how black text looks on a background with the RGB color 225, 117, 146.

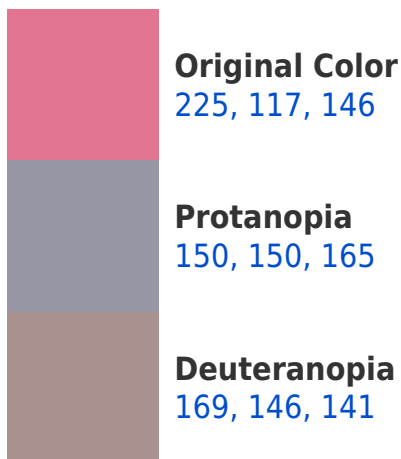


This preview shows how white text looks on a background with the RGB color 225, 117, 146.

Color Blindness Simulation

Color vision deficiency is a very complex topic, and I could not describe the different causes any better than Wikipedia does, so if you want to learn more, you should check out their [article about color blindness](#).

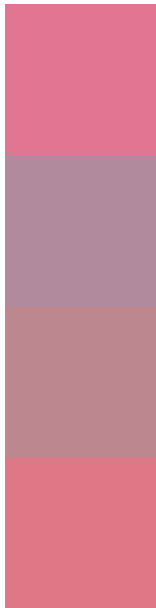
Dichromacy





Tritanopia
224, 120, 129

Trichromacy



Original Color
225, 117, 146

Protanomaly
177, 138, 158

Deuteranomaly
189, 135, 143

Tritanomaly
224, 119, 135

Monochromacy



Original Color
225, 117, 146

Achromatopsia
153, 153, 153

Achromatomaly
179, 140, 150

CSS Examples

Text

The CSS property to change the color of the text to RGB 225, 117, 146 is called "color". The color property can be set on classes, ids or directly on the HTML element.

This example shows how text in the color `rgb(225, 117, 146)` looks like.

```
.text, #text, p{  
    color:rgb(225, 117, 146)  
}
```

If you want to add a text shadow in that color use the text-shadow property, you can generate a text shadow directly with our [CSS Text Shadow Generator](#).

Here you see how black text with a 4 pixel rgb(225, 117, 146) colored shadow looks like.

```
.shadow{ text-shadow: 4px 4px 2px rgb(225, 117, 146) }
```

Border

The CSS property to change the border of an element to RGB 225, 117, 146 is called "border". The border property can be set on classes, ids or directly on the HTML element.

This example shows the color as border, it can be applied via the CSS property "border" or "border-color".

```
.border, #border, table{ border:4px solid rgb(225, 117, 146) }
```

If only the border color should be changed use the property `border-color`.

```
.border{ border-color:rgb(225, 117, 146) }
```

If you want to add a box shadow in that color use:

Here you see how a box with a 4 pixel `rgb(225, 117, 146)` colored shadow looks like.

```
.boxshadow{ -moz-box-shadow:4px 4px 4px  
4px rgb(225, 117, 146); -webkit-box-  
shadow:4px 4px 4px 4px rgb(225, 117, 146);  
box-shadow:4px 4px 4px 4px rgb(225, 117,  
146) }
```

Background

The CSS property to change the background color of an element to RGB 225, 117, 146 is called "background". The background property can be set on classes, ids or directly on the HTML element.

```
.background, #background, body{  
background: rgb(225, 117, 146) }
```

If only the background color should be changed can be used:

```
.background{ background-color: rgb(225,  
117, 146) }
```

This example shows the color as background, it is applied via the CSS property "background".

To optimize and compress your CSS code, you can use our [online CSS compressor and optimizer](#) based on csstidy. If you want to create a linear or radial gradient as background or border, check our [CSS Gradient Generator](#).

Hey! You found this booklet interesting? Support Converting Colors with the new Membership Option!

The pro membership hides all ads, plus gives you double the colors in the color bucket, and more awesome pro features!

[Learn more, Memberships starting at \\$2.50/m!](#)

**Follow me
on Twitter!**

@ConvertingColor