

Converting Colors

RGB(225, 134, 154)

Have a look what the booklet for
RGB(225, 134, 154) contains.

RGB(225, 134, 154)	3
<i>Conversions</i>	4
<i>Details</i>	6
<i>Harmonies</i>	11
<i>Previews</i>	23
<i>Color Blindness Simulation</i>	26
<i>CSS Examples</i>	29

Color

RGB(225, 134, 154)

Conversions

Conversions Part 1

Format	Color
Hex	E1869A
RGB	225, 134, 154
RGB Percent	88%, 53%, 60%
CMY	0.1176, 0.4745, 0.3961
CMYK	0.00, 0.40, 0.32, 0.12
HSL	347°, 60%, 70%
HSV	347°, 40%, 88%
XYZ	45.4092, 35.3908, 35.0096
YIQ	163.4890, 47.8160, 25.5120

Conversions

Conversions Part 2

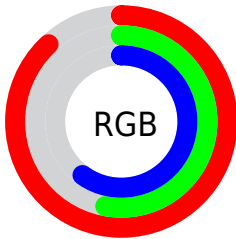
Format	Color
R_{YB}	225, 134, 154
Decimal	14780058
CIE _{Lab}	66.05, 37.20, 4.45
CIE _{LCh}	66, 37.469, 6.824
Yxy	35.3908, 0.3921, 0.3056
Android (android.graphics.Color)	4292970138 (0xFFE1869A)
YUV	163.4890, -4.6781, 53.9451
Hunter-Lab	59.4902, 32.1421, 6.7513

Details

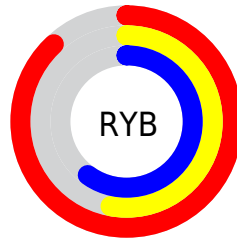
The RGB color **225, 134, 154** is a light color, and the websafe version is hex **FF9999**. A complement of this color would be **134, 225, 205**, and the grayscale version is **164, 164, 164**.

A 20% lighter version of the original color is **255, 188, 208**, and **167, 82, 103** is the 20% darker color. If you saturate the color by 10%, you get **225, 112, 136**, and if you desaturate by 10%, it is **225, 157, 172**.

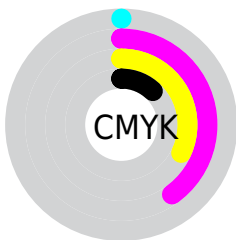
Distribution



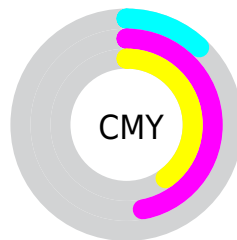
- Red (88%)
- Green (53%)
- Blue (60%)



- Red (88%)
- Yellow (53%)
- Blue (60%)



- Cyan (0%)
- Magenta (40%)
- Yellow (32%)
- Black (12%)



- Cyan (12%)
- Magenta (47%)
- Yellow (40%)

Brightness & Saturation Gradients

These gradients show how the RGB color 225, 134, 154 changes by changing the brightness by 10 percent. The first figure shows a shift by +10% for each color and the second figure -10%.

Similar to the brightness gradients but the following saturation gradients show a change of the RGB color 225, 134, 154 by changing the saturation by 10% instead.

 225, 134, 154

 225, 134, 154

255, 255, 255

 196, 108, 128

 255, 188, 208

 167, 82, 103

 255, 217, 237

 139, 57, 79

 255, 246, 255

 112, 32, 56

 85, 2, 35

 60, 0, 13

 34, 0, 1

 0, 0, 0

 225, 134, 154


 225, 134, 154

 225, 112, 136

 225, 157, 172

 225, 89, 119

 225, 179, 189

 225, 67, 101

 225, 202, 207

 225, 44, 84

 225, 224, 224

 225, 22, 66

 225, 247, 242

 225, 0, 49

 225, 255, 255

Harmonies

Analogous

The Analogous color harmony consists of three colors that are next to each other on the color wheel.



209, 138, 188



225, 134, 154



222, 139, 122

Triad

The Triadic color harmony groups three colors that are evenly spaced from another and form a triangle on the color wheel.



225, 134, 154



139, 170, 105



60, 171, 222

Complementary

The Complementary color scheme is a pair of colors which are on the opposite of each other on the color wheel.



225, 134, 154



134, 225, 205

Split Complementary

Split-complementary colors differ from the complementary color scheme. The scheme consists of three colors, the original color and two neighbors of the complement color.



0, 177, 200



225, 134, 154



97, 176, 133

Square

The Square scheme is like the rectangle color scheme, but the four colors are evenly spaced on the color wheel.



225, 134, 154



175, 161, 93



45, 178, 167



124, 161, 227

Rectangle

The Rectangle color scheme consists of four colors that form a rectangle on the color wheel.



225, 134, 154



212, 146, 105



45, 178, 167



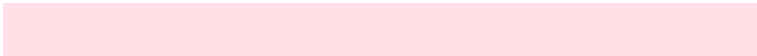
35, 173, 216

Sweetspot

The Sweet Spot groups the original color and five complimentary colors.



225, 134, 154



255, 224, 231



204, 134, 225



128, 110, 114



0, 0, 0



128, 128, 128

Same Dimension

The Same Dimension uses a secret algorithm to generate beautiful new colors.



225, 134, 154



255, 130, 158



225, 158, 134



112, 101, 103



176, 0, 39



48, 0, 11

Inverse Universe

The Inverse Universe completely reimagines the original color for something new.



225, 134, 154



255, 130, 158



134, 201, 225



112, 101, 103



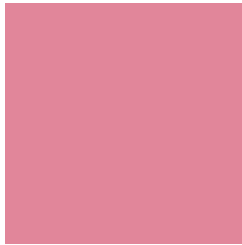
176, 0, 39



48, 0, 11

Previews

White Background



This preview shows how the RGB color 225, 134, 154 looks on a white background.

Color Contrast Check

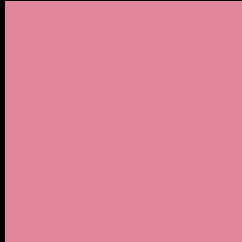
Large Text (above 18pt) WCAG AA × Fail

Any Text WCAG AA × Fail

Large Text (above 18pt) WCAG AAA × Fail

Any Text WCAG AAA × Fail

Black Background



This preview shows how the RGB color 225, 134, 154 looks on a black background.

Color Contrast Check

Large Text (above 18pt) WCAG AA ✓ Pass

Any Text WCAG AA ✓ Pass

Large Text (above 18pt) WCAG AAA ✓ Pass

Any Text WCAG AAA ✓ Pass

If you want to check with other color combinations, try the [Color Contrast Checker](#).

RGB 225, 134, 154 Background



This preview shows how black text looks on a background with the RGB color 225, 134, 154.



This preview shows how white text looks on a background with the RGB color 225, 134, 154.

Color Blindness Simulation

Color vision deficiency is a very complex topic, and I could not describe the different causes any better than Wikipedia does, so if you want to learn more, you should check out their [article about color blindness](#).


Dichromacy



Original Color
225, 134, 154

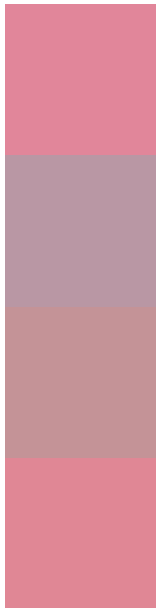
Protanopia
162, 160, 169

Deuteranopia
180, 155, 150



Tritanopia
224, 135, 146

Trichromacy



Original Color
225, 134, 154

Protanomaly
185, 151, 164

Deuteranomaly
196, 147, 151

Tritanomaly
224, 135, 149

Monochromacy



Original Color
225, 134, 154

Achromatopsia
163, 163, 163

Achromatomaly
186, 152, 160

CSS Examples

Text

The CSS property to change the color of the text to RGB 225, 134, 154 is called "color". The color property can be set on classes, ids or directly on the HTML element.

This example shows how text in the color `rgb(225, 134, 154)` looks like.

```
.text, #text, p{  
    color:rgb(225, 134, 154)  
}
```

If you want to add a text shadow in that color use the text-shadow property, you can generate a text shadow directly with our [CSS Text Shadow Generator](#).

Here you see how black text with a 4 pixel rgb(225, 134, 154) colored shadow looks like.

```
.shadow{ text-shadow: 4px 4px 2px rgb(225, 134, 154) }
```

Border

The CSS property to change the border of an element to RGB 225, 134, 154 is called "border". The border property can be set on classes, ids or directly on the HTML element.

This example shows the color as border, it can be applied via the CSS property "border" or "border-color".

```
.border, #border, table{ border:4px solid rgb(225, 134, 154) }
```

If only the border color should be changed use the property `border-color`.

```
.border{ border-color:rgb(225, 134, 154) }
```

If you want to add a box shadow in that color use:

Here you see how a box with a 4 pixel `rgb(225, 134, 154)` colored shadow looks like.

```
.boxshadow{ -moz-box-shadow:4px 4px 4px  
4px rgb(225, 134, 154); -webkit-box-  
shadow:4px 4px 4px 4px rgb(225, 134, 154);  
box-shadow:4px 4px 4px 4px rgb(225, 134,  
154) }
```

Background

The CSS property to change the background color of an element to RGB 225, 134, 154 is called "background". The background property can be set on classes, ids or directly on the HTML element.

```
.background, #background, body{  
background: rgb(225, 134, 154) }
```

If only the background color should be changed can be used:

```
.background{ background-color: rgb(225,  
134, 154) }
```

This example shows the color as background, it is applied via the CSS property "background".

To optimize and compress your CSS code, you can use our [online CSS compressor and optimizer](#) based on csstidy. If you want to create a linear or radial gradient as background or border, check our [CSS Gradient Generator](#).

Hey! You found this booklet interesting? Support Converting Colors with the new Membership Option!

The pro membership hides all ads, plus gives you double the colors in the color bucket, and more awesome pro features!

[Learn more, Memberships starting at \\$2.50/m!](#)

**Follow me
on Twitter!**

@ConvertingColor