

Converting Colors

RGB(225, 147, 174)

Have a look what the booklet for
RGB(225, 147, 174) contains.

RGB(225, 147, 174)	3
<i>Conversions</i>	4
<i>Details</i>	6
<i>Harmonies</i>	11
<i>Previews</i>	23
<i>Color Blindness Simulation</i>	26
<i>CSS Examples</i>	29

Color

RGB(225, 147, 174)

Conversions

Conversions Part 1

Format	Color
Hex	E193AE
RGB	225, 147, 174
RGB Percent	88%, 58%, 68%
CMY	0.1176, 0.4235, 0.3176
CMYK	0.00, 0.35, 0.23, 0.12
HSL	339°, 57%, 73%
HSV	339°, 35%, 88%
XYZ	49.1250, 39.9310, 45.1627
YIQ	173.4000, 37.8210, 24.9330

Conversions

Conversions Part 2

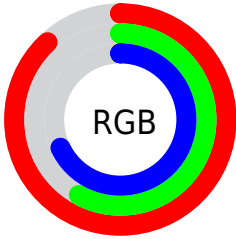
Format	Color
R _Y B	225, 147, 174
Decimal	14783406
CIE Lab	69.42, 33.07, -1.88
CIE LCh	69, 33.121, 356.749
Yxy	39.9310, 0.3660, 0.2975
Android (android.graphics.Color)	4292973486 (0xFFE193AE)
YUV	173.4000, 0.2958, 45.2532
Hunter-Lab	63.1910, 28.1828, 1.8590

Details

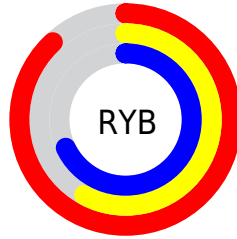
The RGB color **225, 147, 174** is a light color, and the websafe version is hex **FF99CC**. A complement of this color would be **147, 225, 198**, and the grayscale version is **173, 173, 173**.

A 20% lighter version of the original color is **255, 202, 229**, and **168, 95, 122** is the 20% darker color. If you saturate the color by 10%, you get **225, 124, 159**, and if you desaturate by 10%, it is **225, 170, 189**.

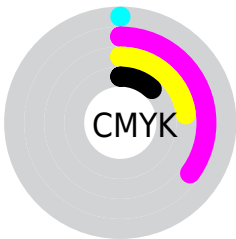
Distribution



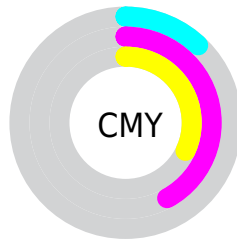
- Red (88%)
- Green (58%)
- Blue (68%)



- Red (88%)
- Yellow (58%)
- Blue (68%)



- Cyan (0%)
- Magenta (35%)
- Yellow (23%)
- Black (12%)



- Cyan (12%)
- Magenta (42%)
- Yellow (32%)

Brightness & Saturation Gradients

These gradients show how the RGB color 225, 147, 174 changes by changing the brightness by 10 percent. The first figure shows a shift by +10% for each color and the second figure -10%.

Similar to the brightness gradients but the following saturation gradients show a change of the RGB color 225, 147, 174 by changing the saturation by 10% instead.

 225, 147, 174

255, 255, 255

 255, 202, 229

 255, 230, 255

 225, 147, 174

 196, 121, 147

 168, 95, 122

 141, 70, 97

 114, 46, 73

 88, 21, 51


 62, 0, 30

 43, 0, 4

 0, 0, 0

 225, 147, 174


 225, 147, 174

 225, 124, 159

 225, 170, 189

 225, 102, 145


 225, 192, 203

 225, 79, 130

 225, 214, 218

 225, 57, 115

 225, 237, 233

 225, 35, 100

 225, 255, 248

 225, 12, 86

 225, 255, 255

 225, 0, 78

Harmonies

Analogous

The Analogous color harmony consists of three colors that are next to each other on the color wheel.



205, 153, 203



225, 147, 174



228, 149, 144

Triad

The Triadic color harmony groups three colors that are evenly spaced from another and form a triangle on the color wheel.



225, 147, 174



162, 176, 115



80, 181, 219

Complementary

The Complementary color scheme is a pair of colors which are on the opposite of each other on the color wheel.



225, 147, 174



147, 225, 198

Split Complementary

Split-complementary colors differ from the complementary color scheme. The scheme consists of three colors, the original color and two neighbors of the complement color.



65, 185, 195



225, 147, 174



127, 182, 136

Square

The Square scheme is like the rectangle color scheme, but the four colors are evenly spaced on the color wheel.



225, 147, 174



193, 167, 109



91, 186, 165



123, 173, 229

Rectangle

The Rectangle color scheme consists of four colors that form a rectangle on the color wheel.



225, 147, 174



222, 153, 127



91, 186, 165



70, 183, 212

Sweetspot

The Sweet Spot groups the original color and five complimentary colors.



225, 147, 174



255, 230, 238



198, 147, 225



128, 112, 117



0, 0, 0



128, 128, 128

Same Dimension

The Same Dimension uses a secret algorithm to generate beautiful new colors.



225, 147, 174



255, 148, 185



225, 159, 147



112, 101, 105



176, 0, 61



48, 0, 17

Inverse Universe

The Inverse Universe completely reimagines the original color for something new.



225, 147, 174



255, 148, 185



147, 213, 225



112, 101, 105



176, 0, 61



48, 0, 17

Previews

White Background



This preview shows how the RGB color 225, 147, 174 looks on a white background.

Color Contrast Check

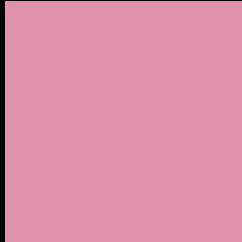
Large Text (above 18pt) WCAG AA × Fail

Any Text WCAG AA × Fail

Large Text (above 18pt) WCAG AAA × Fail

Any Text WCAG AAA × Fail

Black Background



This preview shows how the RGB color 225, 147, 174 looks on a black background.

Color Contrast Check

Large Text (above 18pt) WCAG AA ✓ Pass

Any Text WCAG AA ✓ Pass

Large Text (above 18pt) WCAG AAA ✓ Pass

Any Text WCAG AAA ✓ Pass

If you want to check with other color combinations, try the [Color Contrast Checker](#).

RGB 225, 147, 174 Background



This preview shows how black text looks on a background with the RGB color 225, 147, 174.

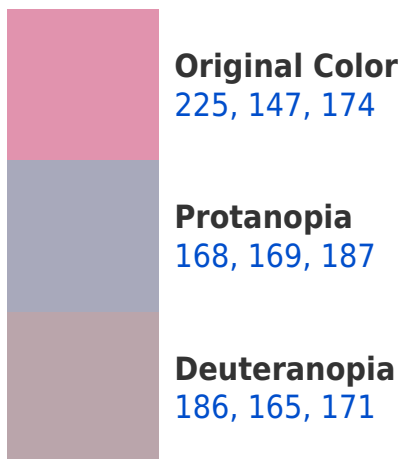


This preview shows how white text looks on a background with the RGB color 225, 147, 174.

Color Blindness Simulation

Color vision deficiency is a very complex topic, and I could not describe the different causes any better than Wikipedia does, so if you want to learn more, you should check out their [article about color blindness](#).

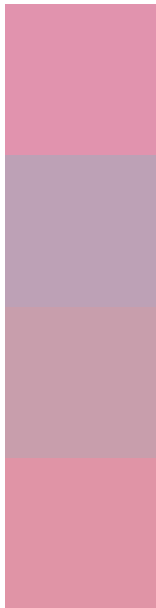
Dichromacy





Tritanopia
224, 149, 161

Trichromacy



Original Color
225, 147, 174

Protanomaly
189, 161, 182

Deuteranomaly
200, 158, 172

Tritanomaly
224, 148, 166

Monochromacy



Original Color
225, 147, 174

Achromatopsia
173, 173, 173

Achromatomaly
192, 164, 173

CSS Examples

Text

The CSS property to change the color of the text to RGB 225, 147, 174 is called "color". The color property can be set on classes, ids or directly on the HTML element.

This example shows how text in the color `rgb(225, 147, 174)` looks like.

```
.text, #text, p{  
    color:rgb(225, 147, 174)  
}
```

If you want to add a text shadow in that color use the text-shadow property, you can generate a text shadow directly with our [CSS Text Shadow Generator](#).

Here you see how black text with a 4 pixel rgb(225, 147, 174) colored shadow looks like.

```
.shadow{ text-shadow: 4px 4px 2px rgb(225, 147, 174) }
```

Border

The CSS property to change the border of an element to RGB 225, 147, 174 is called "border". The border property can be set on classes, ids or directly on the HTML element.

This example shows the color as border, it can be applied via the CSS property "border" or "border-color".

```
.border, #border, table{ border:4px solid rgb(225, 147, 174) }
```

If only the border color should be changed use the property `border-color`.

```
.border{ border-color:rgb(225, 147, 174) }
```

If you want to add a box shadow in that color use:

Here you see how a box with a 4 pixel `rgb(225, 147, 174)` colored shadow looks like.

```
.boxshadow{ -moz-box-shadow:4px 4px 4px 4px rgb(225, 147, 174); -webkit-box-shadow:4px 4px 4px 4px rgb(225, 147, 174); box-shadow:4px 4px 4px 4px rgb(225, 147, 174) }
```

Background

The CSS property to change the background color of an element to RGB 225, 147, 174 is called "background". The background property can be set on classes, ids or directly on the HTML element.

```
.background, #background, body{  
background: rgb(225, 147, 174) }
```

If only the background color should be changed can be used:

```
.background{ background-color: rgb(225,  
147, 174) }
```

This example shows the color as background, it is applied via the CSS property "background".

To optimize and compress your CSS code, you can use our [online CSS compressor and optimizer](#) based on csstidy. If you want to create a linear or radial gradient as background or border, check our [CSS Gradient Generator](#).

Hey! You found this booklet interesting? Support Converting Colors with the new Membership Option!

The pro membership hides all ads, plus gives you double the colors in the color bucket, and more awesome pro features!

[Learn more, Memberships starting at \\$2.50/m!](#)

**Follow me
on Twitter!**

@ConvertingColor