

Converting Colors

RGB(225, 190, 199)

Have a look what the booklet for
RGB(225, 190, 199) contains.

RGB(225, 190, 199)	3
<i>Conversions</i>	4
<i>Details</i>	6
<i>Harmonies</i>	11
<i>Previews</i>	23
<i>Color Blindness Simulation</i>	26
<i>CSS Examples</i>	29

Color

RGB(225, 190, 199)

Conversions

Conversions Part 1

Format	Color
Hex	E1BEC7
RGB	225, 190, 199
RGB Percent	88%, 75%, 78%
CMY	0.1176, 0.2549, 0.2196
CMYK	0.00, 0.16, 0.12, 0.12
HSL	345°, 37%, 81%
HSV	345°, 16%, 88%
XYZ	59.7736, 56.9580, 61.8764
YIQ	201.4910, 17.9710, 10.2190

Conversions

Conversions Part 2

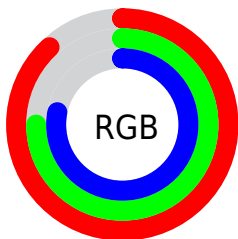
Format	Color
R _Y B	225, 190, 199
Decimal	14794439
CIE Lab	80.16, 13.91, 0.13
CIE LCh	80, 13.913, 0.518
Yxy	56.9580, 0.3347, 0.3189
Android (android.graphics.Color)	4292984519 (0xFFE1BEC7)
YUV	201.4910, -1.2281, 20.6174
Hunter-Lab	75.4705, 9.3008, 4.2190

Details

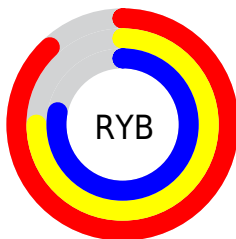
The RGB color **225, 190, 199** is a light color, and the websafe version is hex **FFCCCC**. A complement of this color would be **190, 225, 216**, and the grayscale version is **201, 201, 201**.

A 20% lighter version of the original color is **255, 246, 255**, and **169, 137, 145** is the 20% darker color. If you saturate the color by 10%, you get **225, 168, 182**, and if you desaturate by 10%, it is **225, 213, 216**.

Distribution



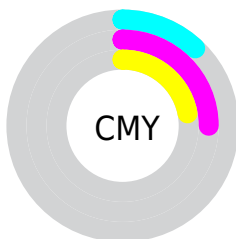
- Red (88%)
- Green (75%)
- Blue (78%)



- Red (88%)
- Yellow (75%)
- Blue (78%)



- Cyan (0%)
- Magenta (16%)
- Yellow (12%)
- Black (12%)



- Cyan (12%)
- Magenta (25%)
- Yellow (22%)

Brightness & Saturation Gradients

These gradients show how the RGB color 225, 190, 199 changes by changing the brightness by 10 percent. The first figure shows a shift by +10% for each color and the second figure -10%.

Similar to the brightness gradients but the following saturation gradients show a change of the RGB color 225, 190, 199 by changing the saturation by 10% instead.

 225, 190, 199

255, 255, 255

 255, 246, 255

 225, 190, 199

 197, 163, 172

 169, 137, 145

 143, 111, 120

 117, 87, 95

 92, 63, 71

 68, 41, 49


 45, 20, 28

 27, 0, 1

 0, 0, 0

 225, 190, 199

 225, 190, 199

 225, 168, 182

 225, 213, 216

 225, 145, 166


 225, 235, 232

 225, 123, 149

 225, 255, 249

 225, 100, 132

 225, 255, 255

 225, 78, 115

 225, 55, 99

 225, 33, 82

 225, 10, 65

 225, 0, 58

Harmonies

Analogous

The Analogous color harmony consists of three colors that are next to each other on the color wheel.



216, 192, 212



225, 190, 199



226, 191, 186

Triad

The Triadic color harmony groups three colors that are evenly spaced from another and form a triangle on the color wheel.



225, 190, 199



195, 202, 176



172, 204, 221

Complementary

The Complementary color scheme is a pair of colors which are on the opposite of each other on the color wheel.



225, 190, 199



190, 225, 216

Split Complementary

Split-complementary colors differ from the complementary color scheme. The scheme consists of three colors, the original color and two neighbors of the complement color.



166, 206, 211



225, 190, 199



180, 205, 186

Square

The Square scheme is like the rectangle color scheme, but the four colors are evenly spaced on the color wheel.



225, 190, 199



209, 198, 173



169, 207, 199



185, 200, 224

Rectangle

The Rectangle color scheme consists of four colors that form a rectangle on the color wheel.



225, 190, 199



223, 193, 179



169, 207, 199



169, 205, 218

Sweetspot

The Sweet Spot groups the original color and five complimentary colors.



225, 190, 199



255, 242, 246



216, 190, 225



128, 120, 122



0, 0, 0



128, 128, 128

Same Dimension

The Same Dimension uses a secret algorithm to generate beautiful new colors.



225, 190, 199



255, 207, 219



225, 198, 190



112, 101, 104



176, 0, 45



48, 0, 12

Inverse Universe

The Inverse Universe completely reimagines the original color for something new.



225, 190, 199



255, 207, 219



190, 217, 225



112, 101, 104



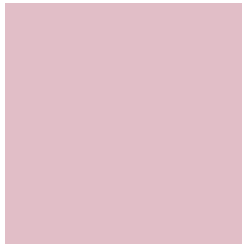
176, 0, 45



48, 0, 12

Previews

White Background



This preview shows how the RGB color 225, 190, 199 looks on a white background.

Color Contrast Check

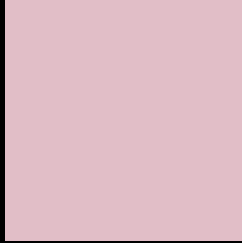
Large Text (above 18pt) WCAG AA × Fail

Any Text WCAG AA × Fail

Large Text (above 18pt) WCAG AAA × Fail

Any Text WCAG AAA × Fail

Black Background



This preview shows how the RGB color 225, 190, 199 looks on a black background.

Color Contrast Check

Large Text (above 18pt) WCAG AA ✓ Pass

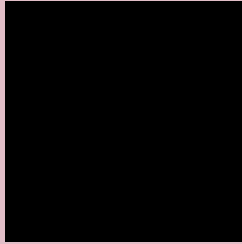
Any Text WCAG AA ✓ Pass

Large Text (above 18pt) WCAG AAA ✓ Pass

Any Text WCAG AAA ✓ Pass

If you want to check with other color combinations, try the [Color Contrast Checker](#).

RGB 225, 190, 199 Background



This preview shows how black text looks on a background with the RGB color 225, 190, 199.



This preview shows how white text looks on a background with the RGB color 225, 190, 199.

Color Blindness Simulation

Color vision deficiency is a very complex topic, and I could not describe the different causes any better than Wikipedia does, so if you want to learn more, you should check out their [article about color blindness](#).


Dichromacy



Original Color
[225, 190, 199](#)

Protanopia
[201, 198, 204](#)

Deuteranopia
[218, 193, 198](#)



Tritanopia
226, 189, 204

Trichromacy



Original Color

225, 190, 199

Protanomaly

210, 195, 202

Deuteranomaly

221, 192, 198

Tritanomaly

226, 189, 202

Monochromacy



Original Color

225, 190, 199

Achromatopsia

201, 201, 201

Achromatomaly

210, 197, 200

CSS Examples

Text

The CSS property to change the color of the text to RGB 225, 190, 199 is called "color". The color property can be set on classes, ids or directly on the HTML element.

This example shows how text in the color `rgb(225, 190, 199)` looks like.

```
.text, #text, p{  
    color:rgb(225, 190, 199)  
}
```

If you want to add a text shadow in that color use the text-shadow property, you can generate a text shadow directly with our [CSS Text Shadow Generator](#).

Here you see how black text with a 4 pixel rgb(225, 190, 199) colored shadow looks like.

```
.shadow{ text-shadow: 4px 4px 2px rgb(225, 190, 199) }
```

Border

The CSS property to change the border of an element to RGB 225, 190, 199 is called "border". The border property can be set on classes, ids or directly on the HTML element.

This example shows the color as border, it can be applied via the CSS property "border" or "border-color".

```
.border, #border, table{ border:4px solid rgb(225, 190, 199) }
```

If only the border color should be changed use the property border-color.

```
.border{ border-color:rgb(225, 190, 199) }
```

If you want to add a box shadow in that color use:

Here you see how a box with a 4 pixel rgb(225, 190, 199) colored shadow looks like.

```
.boxshadow{ -moz-box-shadow:4px 4px 4px  
4px rgb(225, 190, 199); -webkit-box-  
shadow:4px 4px 4px 4px rgb(225, 190, 199);  
box-shadow:4px 4px 4px 4px rgb(225, 190,  
199) }
```

Background

The CSS property to change the background color of an element to RGB 225, 190, 199 is called "background". The background property can be set on classes, ids or directly on the HTML element.

```
.background, #background, body{  
background: rgb(225, 190, 199) }
```

If only the background color should be changed can be used:

```
.background{ background-color: rgb(225,  
190, 199) }
```

This example shows the color as background, it is applied via the CSS property "background".

To optimize and compress your CSS code, you can use our [online CSS compressor and optimizer](#) based on csstidy. If you want to create a linear or radial gradient as background or border, check our [CSS Gradient Generator](#).

Hey! You found this booklet interesting? Support Converting Colors with the new Membership Option!

The pro membership hides all ads, plus gives you double the colors in the color bucket, and more awesome pro features!

[Learn more, Memberships starting at \\$2.50/m!](#)

**Follow me
on Twitter!**

@ConvertingColor