

# Converting Colors

RGB(225, 78, 138)

Have a look what the booklet for  
RGB(225, 78, 138) contains.

<b>RGB(225, 78, 138)</b> .....	3
<i><b>Conversions</b></i> .....	4
<i><b>Details</b></i> .....	6
<i><b>Harmonies</b></i> .....	11
<i><b>Previews</b></i> .....	23
<i><b>Color Blindness Simulation</b></i> .....	26
<i><b>CSS Examples</b></i> .....	29

# Color

**RGB(225, 78, 138)**

# Conversions

## Conversions Part 1

<b>Format</b>	<b>Color</b>
Hex	E14E8A
RGB	225, 78, 138
RGB Percent	88%, 31%, 54%
CMY	0.1176, 0.6941, 0.4588
CMYK	0.00, 0.65, 0.39, 0.12
HSL	336°, 71%, 59%
HSV	336°, 65%, 88%
XYZ	38.3632, 23.2913, 26.5185
YIQ	128.7930, 68.3520, 49.8240

# Conversions

## Conversions Part 2

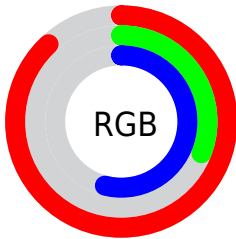
<b>Format</b>	<b>Color</b>
<b>R<sub>YB</sub></b>	225, 78, 138
Decimal	14765706
CIE <sub>Lab</sub>	55.37, 61.88, -1.85
CIE <sub>LCh</sub>	55, 61.905, 358.292
Yxy	23.2913, 0.4351, 0.2642
Android (android.graphics.Color)	4292955786 (0xFFE14E8A)
YUV	128.7930, 4.5391, 84.3735
Hunter-Lab	48.2611, 57.4344, 1.2041

# Details

The RGB color **225, 78, 138** is a dark color, and the websafe version is hex **FF6699**. The color can be described as middle muted rose. A complement of this color would be **78, 225, 165**, and the grayscale version is **129, 129, 129**.

A 20% lighter version of the original color is **255, 135, 191**, and **165, 0, 88** is the 20% darker color. If you saturate the color by 10%, you get **225, 56, 125**, and if you desaturate by 10%, it is **225, 101, 151**.

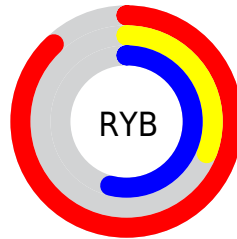
# Distribution



Red (88%)

Green (31%)

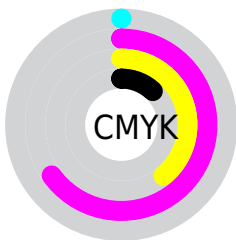
Blue (54%)



Red (88%)

Yellow (31%)

Blue (54%)

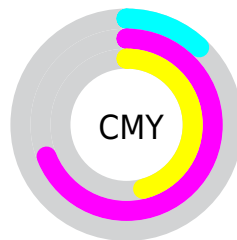


Cyan (0%)

Magenta (65%)

Yellow (39%)

Black (12%)



Cyan (12%)

Magenta (69%)


Yellow (46%)

# Brightness & Saturation Gradients

These gradients show how the RGB color 225, 78, 138 changes by changing the brightness by 10 percent. The first figure shows a shift by +10% for each color and the second figure -10%.

Similar to the brightness gradients but the following saturation gradients show a change of the RGB color 225, 78, 138 by changing the saturation by 10% instead.



 225, 78, 138

255, 255, 255


 255, 135, 191

 255, 163, 219

 255, 192, 248

 255, 221, 255

 255, 251, 255

 225, 78, 138

 195, 47, 113

 165, 0, 88

 136, 0, 65

 107, 0, 43

 78, 0, 23

 51, 0, 2

 0, 0, 0

 225, 78, 138

 225, 56, 125

 225, 78, 138

 225, 101, 151

■ 225, 33, 111

■ 225, 123, 165

■ 225, 11, 98

■ 225, 146, 178

■ 225, 0, 92

■ 225, 168, 191

■ 225, 191, 205

■ 225, 213, 218

■ 225, 235, 231

■ 225, 255, 245

■ 225, 255, 255

# Harmonies

## Analogous

The Analogous color harmony consists of three colors that are next to each other on the color wheel.



194, 95, 190



225, 78, 138



225, 85, 85

# Triad

The Triadic color harmony groups three colors that are evenly spaced from another and form a triangle on the color wheel.



225, 78, 138



108, 144, 22



0, 152, 224

# Complementary

The Complementary color scheme is a pair of colors which are on the opposite of each other on the color wheel.



225, 78, 138



78, 225, 165

# Split Complementary

Split-complementary colors differ from the complementary color scheme. The scheme consists of three colors, the original color and two neighbors of the complement color.



0, 157, 182



225, 78, 138



0, 153, 73

# Square

The Square scheme is like the rectangle color scheme, but the four colors are evenly spaced on the color wheel.



225, 78, 138



161, 129, 0



0, 157, 128



0, 140, 240

# Rectangle

The Rectangle color scheme consists of four colors that form a rectangle on the color wheel.



225, 78, 138



212, 100, 53



0, 157, 128



0, 154, 212



# Sweetspot

The Sweet Spot groups the original color and five complimentary colors.



225, 78, 138



255, 204, 225



164, 78, 225



128, 97, 109



0, 0, 0



128, 128, 128



# Same Dimension

The Same Dimension uses a secret algorithm to generate beautiful new colors.



225, 78, 138



255, 56, 137



225, 90, 78



112, 101, 106



176, 0, 72



48, 0, 20



# Inverse Universe

The Inverse Universe completely reimagines the original color for something new.



225, 78, 138



255, 56, 137



78, 213, 225



112, 101, 106



176, 0, 72



48, 0, 20



# Previews

## White Background



This preview shows how the RGB color 225, 78, 138 looks on a white background.

## Color Contrast Check

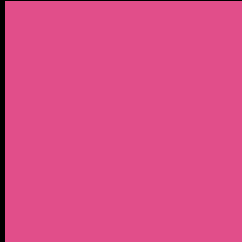
Large Text (above 18pt) WCAG AA ✓ Pass

Any Text WCAG AA ✗ Fail

Large Text (above 18pt) WCAG AAA ✗ Fail

Any Text WCAG AAA ✗ Fail

# Black Background



This preview shows how the RGB color 225, 78, 138 looks on a black background.

## Color Contrast Check

Large Text (above 18pt) WCAG AA ✓ Pass

Any Text WCAG AA ✓ Pass

Large Text (above 18pt) WCAG AAA ✓ Pass

Any Text WCAG AAA × Fail

If you want to check with other color combinations, try the [Color Contrast Checker](#).



## RGB 225, 78, 138 Background



This preview shows how black text looks on a background with the RGB color 225, 78, 138.

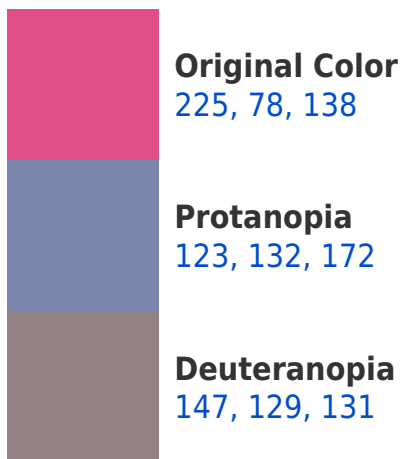


This preview shows how white text looks on a background with the RGB color 225, 78, 138.

# Color Blindness Simulation

Color vision deficiency is a very complex topic, and I could not describe the different causes any better than Wikipedia does, so if you want to learn more, you should check out their [article about color blindness](#).

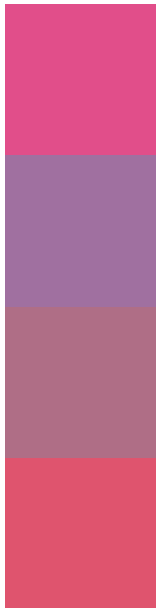
## Dichromacy





**Tritanopia**  
222, 88, 94

# Trichromacy



**Original Color**  
225, 78, 138

**Protanomaly**  
160, 112, 160

**Deuteranomaly**  
175, 110, 134

**Tritanomaly**  
223, 84, 110

# Monochromacy



**Original Color**  
225, 78, 138

**Achromatopsia**  
129, 129, 129

**Achromatomaly**  
164, 110, 132

# CSS Examples

## Text

The CSS property to change the color of the text to RGB 225, 78, 138 is called "color". The color property can be set on classes, ids or directly on the HTML element.

This example shows how text in the color `rgb(225, 78, 138)` looks like.

```
.text, #text, p{  
    color:rgb(225, 78, 138)  
}
```

If you want to add a text shadow in that color use the text-shadow property, you can generate a text shadow directly with our [CSS Text Shadow Generator](#).

Here you see how black text with a 4 pixel rgb(225, 78, 138) colored shadow looks like.

```
.shadow{ text-shadow: 4px 4px 2px rgb(225, 78, 138) }
```

## Border

The CSS property to change the border of an element to RGB 225, 78, 138 is called "border". The border property can be set on classes, ids or directly on the HTML element.

This example shows the color as border, it can be applied via the CSS property "border" or "border-color".

```
.border, #border, table{ border:4px solid rgb(225, 78, 138) }
```

If only the border color should be changed use the property `border-color`.

```
.border{ border-color:rgb(225, 78, 138) }
```

If you want to add a box shadow in that color use:

Here you see how a box with a 4 pixel `rgb(225, 78, 138)` colored shadow looks like.

```
.boxshadow{ -moz-box-shadow:4px 4px 4px  
4px rgb(225, 78, 138); -webkit-box-  
shadow:4px 4px 4px 4px rgb(225, 78, 138);  
box-shadow:4px 4px 4px 4px rgb(225, 78,  
138) }
```

# Background

The CSS property to change the background color of an element to RGB 225, 78, 138 is called "background". The background property can be set on classes, ids or directly on the HTML element.

```
.background, #background, body{  
background: rgb(225, 78, 138) }
```

If only the background color should be changed can be used:

```
.background{ background-color: rgb(225, 78,  
138) }
```

This example shows the color as background, it is applied via the CSS property "background".

To optimize and compress your CSS code, you can use our [online CSS compressor and optimizer](#) based on csstidy. If you want to create a linear or radial gradient as background or border, check our [CSS Gradient Generator](#).



Hey! You found this booklet interesting? Support Converting Colors with the new Membership Option!

The pro membership hides all ads, plus gives you double the colors in the color bucket, and more awesome pro features!

**[Learn more, Memberships starting at \\$2.50/m!](#)**

**Follow me  
on Twitter!**

@ConvertingColor