

Converting Colors

RGB(225, 81, 109)

Have a look what the booklet for
RGB(225, 81, 109) contains.

RGB(225, 81, 109)	3
<i>Conversions</i>	4
<i>Details</i>	6
<i>Harmonies</i>	11
<i>Previews</i>	23
<i>Color Blindness Simulation</i>	26
<i>CSS Examples</i>	29

Color

RGB(225, 81, 109)

Conversions

Conversions Part 1

Format	Color
Hex	E1516D
RGB	225, 81, 109
RGB Percent	88%, 32%, 43%
CMY	0.1176, 0.6824, 0.5725
CMYK	0.00, 0.64, 0.52, 0.12
HSL	348°, 71%, 60%
HSV	348°, 64%, 88%
XYZ	36.7541, 22.9965, 16.9696
YIQ	127.2480, 76.8360, 39.2360

Conversions

Conversions Part 2

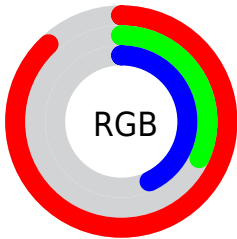
Format	Color
R_{YB}	225, 81, 109
Decimal	14766445
CIE Lab	55.07, 57.94, 14.90
CIE LCh	55, 59.827, 14.424
Yxy	22.9965, 0.4791, 0.2997
Android (android.graphics.Color)	4292956525 (0xFFE1516D)
YUV	127.2480, -8.9963, 85.7285
Hunter-Lab	47.9547, 52.8876, 12.5875

Details

The RGB color **225, 81, 109** is a dark color, and the websafe version is hex **CC3366**. The color can be described as middle muted rose. A complement of this color would be **81, 225, 197**, and the grayscale version is **127, 127, 127**.

A 20% lighter version of the original color is **255, 137, 160**, and **164, 13, 62** is the 20% darker color. If you saturate the color by 10%, you get **225, 59, 91**, and if you desaturate by 10%, it is **225, 103, 127**.

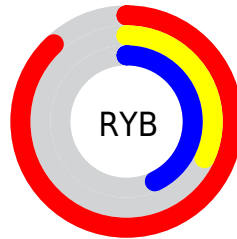
Distribution



Red (88%)

Green (32%)

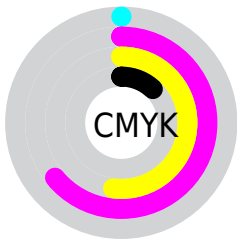
Blue (43%)



Red (88%)

Yellow (32%)

Blue (43%)

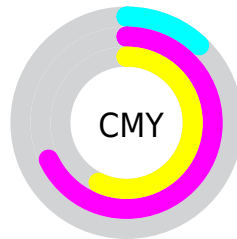


Cyan (0%)

Magenta (64%)

Yellow (52%)

Black (12%)



Cyan (12%)

Magenta (68%)

Yellow (57%)

Brightness & Saturation Gradients

These gradients show how the RGB color 225, 81, 109 changes by changing the brightness by 10 percent. The first figure shows a shift by +10% for each color and the second figure -10%.

Similar to the brightness gradients but the following saturation gradients show a change of the RGB color 225, 81, 109 by changing the saturation by 10% instead.



225, 81, 109



225, 81, 109

255, 255, 255



194, 52, 85



255, 137, 160



164, 13, 62



255, 165, 187



134, 0, 40



255, 194, 215



105, 0, 21



255, 223, 243



76, 0, 1



255, 253, 255



48, 0, 2



0, 0, 0



225, 81, 109



225, 81, 109



225, 59, 91



225, 103, 127

 225, 36, 73

 225, 126, 145

 225, 14, 55

 225, 148, 163

 225, 0, 44

 225, 171, 182

 225, 194, 200

 225, 216, 218

 225, 239, 236

 225, 255, 254

 225, 255, 255

Harmonies

Analogous

The Analogous color harmony consists of three colors that are next to each other on the color wheel.



211, 85, 161



225, 81, 109



212, 98, 61

Triad

The Triadic color harmony groups three colors that are evenly spaced from another and form a triangle on the color wheel.



225, 81, 109



74, 148, 52



0, 145, 232

Complementary

The Complementary color scheme is a pair of colors which are on the opposite of each other on the color wheel.



225, 81, 109



81, 225, 197

Split Complementary

Split-complementary colors differ from the complementary color scheme. The scheme consists of three colors, the original color and two neighbors of the complement color.



0, 154, 203



225, 81, 109



0, 154, 102

Square

The Square scheme is like the rectangle color scheme, but the four colors are evenly spaced on the color wheel.



225, 81, 109



134, 137, 8



0, 156, 156



72, 129, 233

Rectangle

The Rectangle color scheme consists of four colors that form a rectangle on the color wheel.



225, 81, 109



192, 112, 33



0, 156, 156



0, 149, 225

Sweetspot

The Sweet Spot groups the original color and five complimentary colors.



225, 81, 109



255, 207, 216



196, 81, 225



128, 98, 104



0, 0, 0



128, 128, 128

Same Dimension

The Same Dimension uses a secret algorithm to generate beautiful new colors.



225, 81, 109



255, 59, 97



225, 124, 81



112, 101, 103



176, 0, 34



48, 0, 9

Inverse Universe

The Inverse Universe completely reimagines the original color for something new.



225, 81, 109



255, 59, 97



81, 182, 225



112, 101, 103



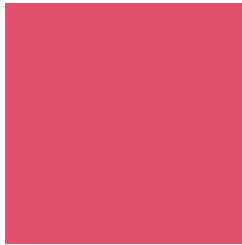
176, 0, 34



48, 0, 9

Previews

White Background



This preview shows how the RGB color 225, 81, 109 looks on a white background.

Color Contrast Check

Large Text (above 18pt) WCAG AA ✓ Pass

Any Text WCAG AA ✗ Fail

Large Text (above 18pt) WCAG AAA ✗ Fail

Any Text WCAG AAA ✗ Fail

Black Background



This preview shows how the RGB color 225, 81, 109 looks on a black background.

Color Contrast Check

Large Text (above 18pt) WCAG AA ✓ Pass

Any Text WCAG AA ✓ Pass

Large Text (above 18pt) WCAG AAA ✓ Pass

Any Text WCAG AAA × Fail

If you want to check with other color combinations, try the [Color Contrast Checker](#).

RGB 225, 81, 109 Background



This preview shows how black text looks on a background with the RGB color 225, 81, 109.

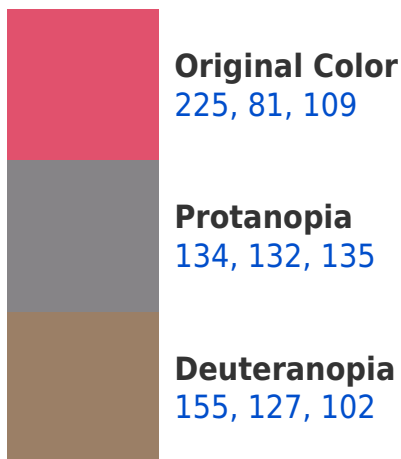


This preview shows how white text looks on a background with the RGB color 225, 81, 109.

Color Blindness Simulation

Color vision deficiency is a very complex topic, and I could not describe the different causes any better than Wikipedia does, so if you want to learn more, you should check out their [article about color blindness](#).

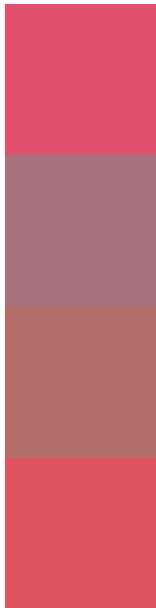
Dichromacy





Tritanopia
224, 85, 90

Trichromacy



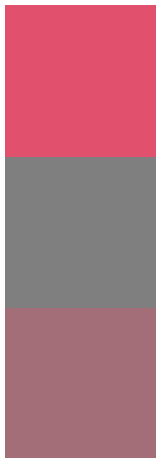
Original Color
225, 81, 109

Protanomaly
167, 113, 126

Deuteranomaly
180, 110, 105

Tritanomaly
224, 84, 97

Monochromacy



Original Color
225, 81, 109

Achromatopsia
127, 127, 127

Achromatomaly
163, 110, 120

CSS Examples

Text

The CSS property to change the color of the text to RGB 225, 81, 109 is called "color". The color property can be set on classes, ids or directly on the HTML element.

This example shows how text in the color `rgb(225, 81, 109)` looks like.

```
.text, #text, p{  
    color:rgb(225, 81, 109)  
}
```

If you want to add a text shadow in that color use the text-shadow property, you can generate a text shadow directly with our [CSS Text Shadow Generator](#).

Here you see how black text with a 4 pixel rgb(225, 81, 109) colored shadow looks like.

```
.shadow{ text-shadow: 4px 4px 2px rgb(225, 81, 109) }
```

Border

The CSS property to change the border of an element to RGB 225, 81, 109 is called "border". The border property can be set on classes, ids or directly on the HTML element.

This example shows the color as border, it can be applied via the CSS property "border" or "border-color".

```
.border, #border, table{ border:4px solid rgb(225, 81, 109) }
```

If only the border color should be changed use the property `border-color`.

```
.border{ border-color:rgb(225, 81, 109) }
```

If you want to add a box shadow in that color use:

Here you see how a box with a 4 pixel `rgb(225, 81, 109)` colored shadow looks like.

```
.boxshadow{ -moz-box-shadow:4px 4px 4px  
4px rgb(225, 81, 109); -webkit-box-  
shadow:4px 4px 4px 4px rgb(225, 81, 109);  
box-shadow:4px 4px 4px 4px rgb(225, 81,  
109) }
```

Background

The CSS property to change the background color of an element to RGB 225, 81, 109 is called "background". The background property can be set on classes, ids or directly on the HTML element.

```
.background, #background, body{  
background: rgb(225, 81, 109) }
```

If only the background color should be changed can be used:

```
.background{ background-color: rgb(225, 81,  
109) }
```

This example shows the color as background, it is applied via the CSS property "background".

To optimize and compress your CSS code, you can use our [online CSS compressor and optimizer](#) based on csstidy. If you want to create a linear or radial gradient as background or border, check our [CSS Gradient Generator](#).

Hey! You found this booklet interesting? Support Converting Colors with the new Membership Option!

The pro membership hides all ads, plus gives you double the colors in the color bucket, and more awesome pro features!

[Learn more, Memberships starting at \\$2.50/m!](#)

**Follow me
on Twitter!**

@ConvertingColor