

Converting Colors

RGB(225, 91, 120)

Have a look what the booklet for
RGB(225, 91, 120) contains.

RGB(225, 91, 120)	3
<i>Conversions</i>	4
<i>Details</i>	6
<i>Harmonies</i>	11
<i>Previews</i>	23
<i>Color Blindness Simulation</i>	26
<i>CSS Examples</i>	29

Color

RGB(225, 91, 120)

Conversions

Conversions Part 1

Format	Color
Hex	E15B78
RGB	225, 91, 120
RGB Percent	88%, 36%, 47%
CMY	0.1176, 0.6431, 0.5294
CMYK	0.00, 0.60, 0.47, 0.12
HSL	347°, 69%, 62%
HSV	347°, 60%, 88%
XYZ	38.1826, 24.8458, 20.5526
YIQ	134.3720, 70.5550, 37.4270

Conversions

Conversions Part 2

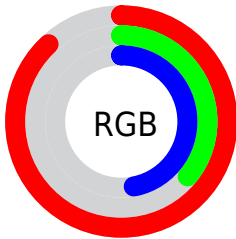
Format	Color
R_{YB}	225, 91, 120
Decimal	14769016
CIE _{Lab}	56.92, 54.60, 11.01
CIE _{LCh}	57, 55.698, 11.396
Yxy	24.8458, 0.4568, 0.2973
Android (android.graphics.Color)	4292959096 (0xFFE15B78)
YUV	134.3720, -7.0854, 79.4808
Hunter-Lab	49.8455, 49.5045, 10.4451

Details

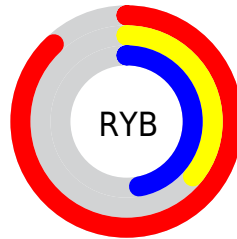
The RGB color **225, 91, 120** is a dark color, and the websafe version is hex **CC3366**. The color can be described as middle muted rose. A complement of this color would be **91, 225, 196**, and the grayscale version is **134, 134, 134**.

A 20% lighter version of the original color is **255, 146, 172**, and **165, 32, 72** is the 20% darker color. If you saturate the color by 10%, you get **225, 69, 102**, and if you desaturate by 10%, it is **225, 114, 138**.

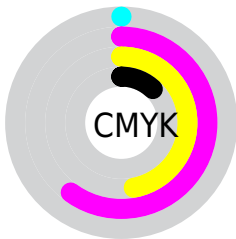
Distribution



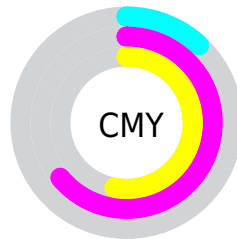
- Red (88%)
- Green (36%)
- Blue (47%)



- Red (88%)
- Yellow (36%)
- Blue (47%)



- Cyan (0%)
- Magenta (60%)
- Yellow (47%)
- Black (12%)



- Cyan (12%)
- Magenta (64%)
- Yellow (53%)

Brightness & Saturation Gradients

These gradients show how the RGB color 225, 91, 120 changes by changing the brightness by 10 percent. The first figure shows a shift by +10% for each color and the second figure -10%.

Similar to the brightness gradients but the following saturation gradients show a change of the RGB color 225, 91, 120 by changing the saturation by 10% instead.



225, 91, 120



225, 91, 120

255, 255, 255



195, 63, 95



255, 146, 172



165, 32, 72



255, 174, 199



135, 0, 50



255, 203, 227



106, 0, 29



255, 232, 255



78, 0, 2



51, 0, 2



0, 0, 0



225, 91, 120



225, 91, 120




225, 69, 102



225, 114, 138

 225, 46, 85

 225, 136, 155

 225, 24, 67

 225, 159, 173

 225, 1, 49

 225, 181, 191

 225, 0, 49

 225, 204, 208

 225, 226, 226

 225, 249, 243

 225, 255, 255

Harmonies

Analogous

The Analogous color harmony consists of three colors that are next to each other on the color wheel.



209, 96, 169



225, 91, 120



216, 104, 75

Triad

The Triadic color harmony groups three colors that are evenly spaced from another and form a triangle on the color wheel.



225, 91, 120



91, 152, 59



0, 150, 228

Complementary

The Complementary color scheme is a pair of colors which are on the opposite of each other on the color wheel.



225, 91, 120



91, 225, 196

Split Complementary

Split-complementary colors differ from the complementary color scheme. The scheme consists of three colors, the original color and two neighbors of the complement color.



0, 158, 200



225, 91, 120



0, 158, 104

Square

The Square scheme is like the rectangle color scheme, but the four colors are evenly spaced on the color wheel.



225, 91, 120



145, 140, 30



0, 160, 154



74, 136, 232

Rectangle

The Rectangle color scheme consists of four colors that form a rectangle on the color wheel.



225, 91, 120



198, 117, 50



0, 160, 154



0, 153, 221

Sweetspot

The Sweet Spot groups the original color and five complimentary colors.



225, 91, 120



255, 209, 219



196, 91, 225



128, 99, 106



0, 0, 0



128, 128, 128

Same Dimension

The Same Dimension uses a secret algorithm to generate beautiful new colors.



225, 91, 120



255, 74, 113



225, 129, 91



112, 101, 103



176, 0, 38



48, 0, 10

Inverse Universe

The Inverse Universe completely reimagines the original color for something new.



225, 91, 120



255, 74, 113



91, 187, 225



112, 101, 103



176, 0, 38



48, 0, 10

Previews

White Background



This preview shows how the RGB color 225, 91, 120 looks on a white background.

Color Contrast Check

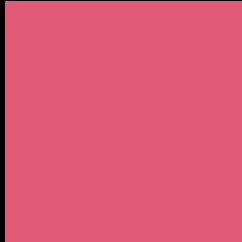
Large Text (above 18pt) WCAG AA ✓ Pass

Any Text WCAG AA ✗ Fail

Large Text (above 18pt) WCAG AAA ✗ Fail

Any Text WCAG AAA ✗ Fail

Black Background



This preview shows how the RGB color 225, 91, 120 looks on a black background.

Color Contrast Check

Large Text (above 18pt) WCAG AA ✓ Pass

Any Text WCAG AA ✓ Pass

Large Text (above 18pt) WCAG AAA ✓ Pass

Any Text WCAG AAA × Fail

If you want to check with other color combinations, try the [Color Contrast Checker](#).

RGB 225, 91, 120 Background



This preview shows how black text looks on a background with the RGB color 225, 91, 120.



This preview shows how white text looks on a background with the RGB color 225, 91, 120.

Color Blindness Simulation

Color vision deficiency is a very complex topic, and I could not describe the different causes any better than Wikipedia does, so if you want to learn more, you should check out their [article about color blindness](#).

Dichromacy



Original Color
225, 91, 120

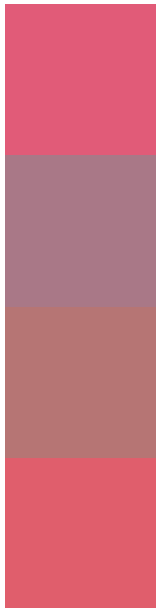
Protanopia
137, 136, 144

Deuteranopia
158, 132, 114



Tritanopia
224, 95, 101

Trichromacy



Original Color
225, 91, 120

Protanomaly
169, 120, 135

Deuteranomaly
182, 117, 116

Tritanomaly
224, 94, 108

Monochromacy



Original Color
225, 91, 120

Achromatopsia
134, 134, 134

Achromatomaly
167, 118, 129

CSS Examples

Text

The CSS property to change the color of the text to RGB 225, 91, 120 is called "color". The color property can be set on classes, ids or directly on the HTML element.

This example shows how text in the color `rgb(225, 91, 120)` looks like.

```
.text, #text, p{  
    color:rgb(225, 91, 120)  
}
```

If you want to add a text shadow in that color use the text-shadow property, you can generate a text shadow directly with our [CSS Text Shadow Generator](#).

Here you see how black text with a 4 pixel rgb(225, 91, 120) colored shadow looks like.

```
.shadow{ text-shadow: 4px 4px 2px rgb(225, 91, 120) }
```

Border

The CSS property to change the border of an element to RGB 225, 91, 120 is called "border". The border property can be set on classes, ids or directly on the HTML element.

This example shows the color as border, it can be applied via the CSS property "border" or "border-color".

```
.border, #border, table{ border:4px solid rgb(225, 91, 120) }
```

If only the border color should be changed use the property `border-color`.

```
.border{ border-color:rgb(225, 91, 120) }
```

If you want to add a box shadow in that color use:

Here you see how a box with a 4 pixel `rgb(225, 91, 120)` colored shadow looks like.

```
.boxshadow{ -moz-box-shadow:4px 4px 4px  
4px rgb(225, 91, 120); -webkit-box-  
shadow:4px 4px 4px 4px rgb(225, 91, 120);  
box-shadow:4px 4px 4px 4px rgb(225, 91,  
120) }
```

Background

The CSS property to change the background color of an element to RGB 225, 91, 120 is called "background". The background property can be set on classes, ids or directly on the HTML element.

```
.background, #background, body{  
background: rgb(225, 91, 120) }
```

If only the background color should be changed can be used:

```
.background{ background-color: rgb(225, 91,  
120) }
```

This example shows the color as background, it is applied via the CSS property "background".

To optimize and compress your CSS code, you can use our [online CSS compressor and optimizer](#) based on csstidy. If you want to create a linear or radial gradient as background or border, check our [CSS Gradient Generator](#).

Hey! You found this booklet interesting? Support Converting Colors with the new Membership Option!

The pro membership hides all ads, plus gives you double the colors in the color bucket, and more awesome pro features!

[Learn more, Memberships starting at \\$2.50/m!](#)

**Follow me
on Twitter!**

@ConvertingColor