

Converting Colors

RGB(226, 152, 185)

Have a look what the booklet for
RGB(226, 152, 185) contains.

RGB(226, 152, 185)	3
<i>Conversions</i>	4
<i>Details</i>	6
<i>Harmonies</i>	11
<i>Previews</i>	23
<i>Color Blindness Simulation</i>	26
<i>CSS Examples</i>	29

Color

RGB(226, 152, 185)

Conversions

Conversions Part 1

Format	Color
Hex	E298B9
RGB	226, 152, 185
RGB Percent	89%, 60%, 73%
CMY	0.1137, 0.4039, 0.2745
CMYK	0.00, 0.33, 0.18, 0.11
HSL	333°, 56%, 74%
HSV	333°, 33%, 89%
XYZ	51.3492, 42.1280, 51.3241
YIQ	177.8880, 33.5110, 25.9510

Conversions

Conversions Part 2

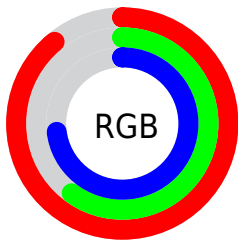
Format	Color
R _Y B	226, 152, 185
Decimal	14850233
CIE Lab	70.96, 32.40, -5.72
CIE LCh	71, 32.903, 349.987
Yxy	42.1280, 0.3546, 0.2909
Android (android.graphics.Color)	4293040313 (0xFFE298B9)
YUV	177.8880, 3.5062, 42.1942
Hunter-Lab	64.9061, 27.6312, -1.4489

Details

The RGB color **226, 152, 185** is a light color, and the websafe version is hex **FF99CC**. A complement of this color would be **152, 226, 193**, and the grayscale version is **178, 178, 178**.

A 20% lighter version of the original color is **255, 207, 241**, and **169, 100, 132** is the 20% darker color. If you saturate the color by 10%, you get **226, 129, 172**, and if you desaturate by 10%, it is **226, 175, 198**.

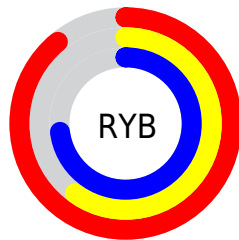
Distribution



Red (89%)

Green (60%)

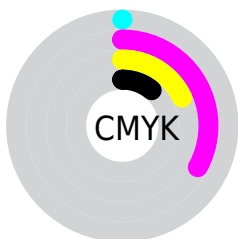
Blue (73%)



Red (89%)

Yellow (60%)

Blue (73%)

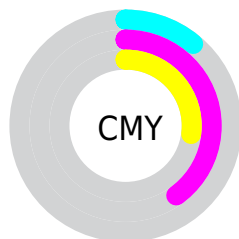


Cyan (0%)

Magenta (33%)

Yellow (18%)

Black (11%)



Cyan (11%)

Magenta (40%)

Yellow (27%)

Brightness & Saturation Gradients

These gradients show how the RGB color 226, 152, 185 changes by changing the brightness by 10 percent. The first figure shows a shift by +10% for each color and the second figure -10%.

Similar to the brightness gradients but the following saturation gradients show a change of the RGB color 226, 152, 185 by changing the saturation by 10% instead.


 226, 152, 185

255, 255, 255

 255, 207, 241

 255, 236, 255


 226, 152, 185

 197, 126, 158

 169, 100, 132

 142, 75, 107

 115, 51, 83

 90, 27, 60

 64, 1, 38

 44, 0, 17

 0, 0, 0

 226, 152, 185

 226, 152, 185

■ 226, 129, 172

■ 226, 175, 198

■ 226, 107, 160

■ 226, 197, 210

■ 226, 84, 147

■ 226, 220, 223

■ 226, 62, 135

■ 226, 242, 235

■ 226, 39, 122

■ 226, 255, 248

■ 226, 16, 110

■ 226, 255, 255

■ 226, 0, 101

Harmonies

Analogous

The Analogous color harmony consists of three colors that are next to each other on the color wheel.



202, 159, 212



226, 152, 185



233, 152, 155

Triad

The Triadic color harmony groups three colors that are evenly spaced from another and form a triangle on the color wheel.



226, 152, 185



174, 178, 117



79, 187, 219

Complementary

The Complementary color scheme is a pair of colors which are on the opposite of each other on the color wheel.



226, 152, 185



152, 226, 193

Split Complementary

Split-complementary colors differ from the complementary color scheme. The scheme consists of three colors, the original color and two neighbors of the complement color.



75, 190, 193



226, 152, 185



140, 185, 134

Square

The Square scheme is like the rectangle color scheme, but the four colors are evenly spaced on the color wheel.



226, 152, 185



203, 168, 115



104, 189, 162



118, 180, 232

Rectangle

The Rectangle color scheme consists of four colors that form a rectangle on the color wheel.



226, 152, 185



229, 156, 137



104, 189, 162



72, 188, 211

Sweetspot

The Sweet Spot groups the original color and five complimentary colors.



226, 152, 185



255, 230, 241



193, 152, 226



128, 112, 119



0, 0, 0



128, 128, 128

Same Dimension

The Same Dimension uses a secret algorithm to generate beautiful new colors.



226, 152, 185



255, 156, 200



226, 156, 152



112, 101, 106



176, 0, 78



48, 0, 22

Inverse Universe

The Inverse Universe completely reimagines the original color for something new.



226, 152, 185



255, 156, 200



152, 222, 226



112, 101, 106



176, 0, 78



48, 0, 22

Previews

White Background



This preview shows how the RGB color 226, 152, 185 looks on a white background.

Color Contrast Check

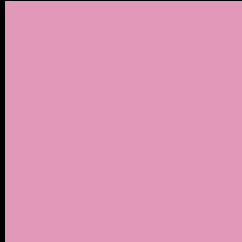
Large Text (above 18pt) WCAG AA × Fail

Any Text WCAG AA × Fail

Large Text (above 18pt) WCAG AAA × Fail

Any Text WCAG AAA × Fail

Black Background



This preview shows how the RGB color 226, 152, 185 looks on a black background.

Color Contrast Check

Large Text (above 18pt) WCAG AA ✓ Pass

Any Text WCAG AA ✓ Pass

Large Text (above 18pt) WCAG AAA ✓ Pass

Any Text WCAG AAA ✓ Pass

If you want to check with other color combinations, try the [Color Contrast Checker](#).

RGB 226, 152, 185 Background



This preview shows how black text looks on a background with the RGB color 226, 152, 185.



This preview shows how white text looks on a background with the RGB color 226, 152, 185.

Color Blindness Simulation

Color vision deficiency is a very complex topic, and I could not describe the different causes any better than Wikipedia does, so if you want to learn more, you should check out their [article about color blindness](#).


Dichromacy



Original Color
226, 152, 185

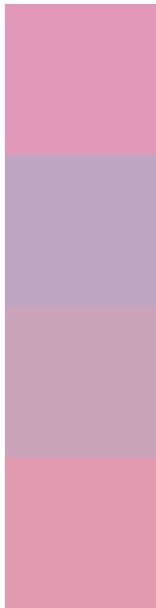
Protanopia
170, 173, 198

Deuteranopia
187, 169, 182



Tritanopia
224, 155, 167

Trichromacy



Original Color
226, 152, 185

Protanomaly
190, 165, 193

Deuteranomaly
201, 163, 183

Tritanomaly
225, 154, 174

Monochromacy



Original Color
226, 152, 185

Achromatopsia
178, 178, 178

Achromatomaly
195, 169, 181

CSS Examples

Text

The CSS property to change the color of the text to RGB 226, 152, 185 is called "color". The color property can be set on classes, ids or directly on the HTML element.

This example shows how text in the color `rgb(226, 152, 185)` looks like.

```
.text, #text, p{  
    color:rgb(226, 152, 185)  
}
```

If you want to add a text shadow in that color use the text-shadow property, you can generate a text shadow directly with our [CSS Text Shadow Generator](#).

Here you see how black text with a 4 pixel rgb(226, 152, 185) colored shadow looks like.

```
.shadow{ text-shadow: 4px 4px 2px rgb(226, 152, 185) }
```

Border

The CSS property to change the border of an element to RGB 226, 152, 185 is called "border". The border property can be set on classes, ids or directly on the HTML element.

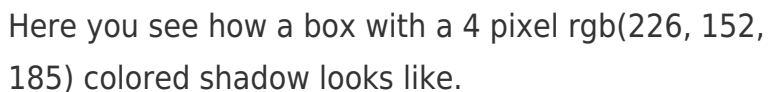
This example shows the color as border, it can be applied via the CSS property "border" or "border-color".

```
.border, #border, table{ border:4px solid rgb(226, 152, 185) }
```

If only the border color should be changed use the property `border-color`.

```
.border{ border-color:rgb(226, 152, 185) }
```

If you want to add a box shadow in that color use:



Here you see how a box with a 4 pixel `rgb(226, 152, 185)` colored shadow looks like.

```
.boxshadow{ -moz-box-shadow:4px 4px 4px 4px rgb(226, 152, 185); -webkit-box-shadow:4px 4px 4px 4px rgb(226, 152, 185); box-shadow:4px 4px 4px 4px rgb(226, 152, 185) }
```

Background

The CSS property to change the background color of an element to RGB 226, 152, 185 is called "background". The background property can be set on classes, ids or directly on the HTML element.

```
.background, #background, body{  
background: rgb(226, 152, 185) }
```

If only the background color should be changed can be used:

```
.background{ background-color: rgb(226,  
152, 185) }
```

This example shows the color as background, it is applied via the CSS property "background".

To optimize and compress your CSS code, you can use our [online CSS compressor and optimizer](#) based on csstidy. If you want to create a linear or radial gradient as background or border, check our [CSS Gradient Generator](#).

Hey! You found this booklet interesting? Support Converting Colors with the new Membership Option!

The pro membership hides all ads, plus gives you double the colors in the color bucket, and more awesome pro features!

[Learn more, Memberships starting at \\$2.50/m!](#)

**Follow me
on Twitter!**

@ConvertingColor