

# Converting Colors

RGB(226, 193, 202)

Have a look what the booklet for  
RGB(226, 193, 202) contains.

<b>RGB(226, 193, 202)</b> .....	3
<i><b>Conversions</b></i> .....	4
<i><b>Details</b></i> .....	6
<i><b>Harmonies</b></i> .....	11
<i><b>Previews</b></i> .....	23
<i><b>Color Blindness Simulation</b></i> .....	26
<i><b>CSS Examples</b></i> .....	29

# **Color**

**RGB(226, 193, 202)**

# Conversions

## Conversions Part 1

<b>Format</b>	<b>Color</b>
Hex	E2C1CA
RGB	226, 193, 202
RGB Percent	89%, 76%, 79%
CMY	0.1137, 0.2431, 0.2078
CMYK	0.00, 0.15, 0.11, 0.11
HSL	344°, 36%, 82%
HSV	344°, 15%, 89%
XYZ	61.0947, 58.5729, 63.9628
YIQ	203.8930, 16.7790, 9.7950

# Conversions

## Conversions Part 2

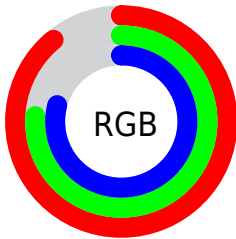
<b>Format</b>	<b>Color</b>
R <sub>Y</sub> B	226, 193, 202
Decimal	14860746
CIE Lab	81.06, 13.16, -0.16
CIE LCh	81, 13.166, 359.290
Yxy	58.5729, 0.3327, 0.3190
Android (android.graphics.Color)	4293050826 (0xFFE2C1CA)
YUV	203.8930, -0.9332, 19.3878
Hunter-Lab	76.5330, 8.5601, 4.0212

# Details

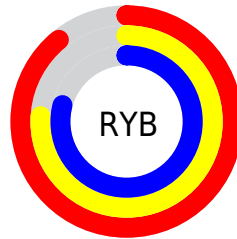
The RGB color **226, 193, 202** is a light color, and the websafe version is hex **FFCCCC**. A complement of this color would be **193, 226, 217**, and the grayscale version is **204, 204, 204**.

A 20% lighter version of the original color is 255, 250, 255, and **170, 139, 148** is the 20% darker color. If you saturate the color by 10%, you get **226, 170, 186**, and if you desaturate by 10%, it is **226, 216, 218**.

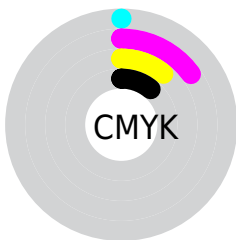
# Distribution



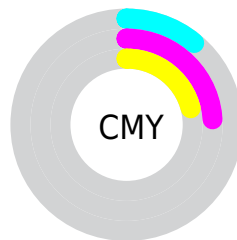
- Red (89%)
- Green (76%)
- Blue (79%)



- Red (89%)
- Yellow (76%)
- Blue (79%)



- Cyan (0%)
- Magenta (15%)
- Yellow (11%)
- Black (11%)



- Cyan (11%)
- Magenta (24%)
- Yellow (21%)

# Brightness & Saturation Gradients

These gradients show how the RGB color 226, 193, 202 changes by changing the brightness by 10 percent. The first figure shows a shift by +10% for each color and the second figure -10%.

Similar to the brightness gradients but the following saturation gradients show a change of the RGB color 226, 193, 202 by changing the saturation by 10% instead.




 226, 193, 202

 226, 193, 202

255, 255, 255

 198, 166, 175

 255, 250, 255

 170, 139, 148

 144, 114, 122

 118, 89, 97

 93, 66, 74

 69, 43, 51


 46, 22, 30

 28, 0, 5

 0, 0, 0

 226, 193, 202

 226, 193, 202

 226, 170, 186


 226, 216, 218

 226, 148, 169

 226, 238, 235


 226, 125, 153

 226, 255, 251

 226, 103, 136

 226, 255, 255

 226, 80, 120

 226, 57, 103

 226, 35, 87

 226, 12, 71

 226, 0, 62

# Harmonies

## Analogous

The Analogous color harmony consists of three colors that are next to each other on the color wheel.



217, 195, 214



226, 193, 202



228, 194, 190

# Triad

The Triadic color harmony groups three colors that are evenly spaced from another and form a triangle on the color wheel.



226, 193, 202



198, 204, 180



175, 206, 222

# Complementary

The Complementary color scheme is a pair of colors which are on the opposite of each other on the color wheel.



226, 193, 202



193, 226, 217

# Split Complementary

Split-complementary colors differ from the complementary color scheme. The scheme consists of three colors, the original color and two neighbors of the complement color.



170, 208, 213



226, 193, 202



184, 207, 188

# Square

The Square scheme is like the rectangle color scheme, but the four colors are evenly spaced on the color wheel.



226, 193, 202



212, 200, 177



174, 209, 201



188, 202, 226

# Rectangle

The Rectangle color scheme consists of four colors that form a rectangle on the color wheel.



226, 193, 202



225, 195, 183



174, 209, 201



173, 207, 219



# Sweetspot

The Sweet Spot groups the original color and five complimentary colors.



226, 193, 202



255, 245, 248



217, 193, 226



128, 121, 123



0, 0, 0



128, 128, 128



# Same Dimension

The Same Dimension uses a secret algorithm to generate beautiful new colors.



226, 193, 202



255, 209, 222



226, 200, 193



112, 101, 104



176, 0, 48



48, 0, 13



# Inverse Universe

The Inverse Universe completely reimagines the original color for something new.



226, 193, 202



255, 209, 222



193, 219, 226



112, 101, 104



176, 0, 48

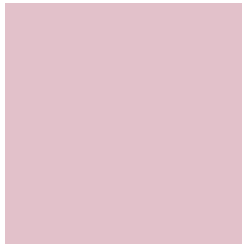


48, 0, 13



# Previews

## White Background



This preview shows how the RGB color 226, 193, 202 looks on a white background.

## Color Contrast Check

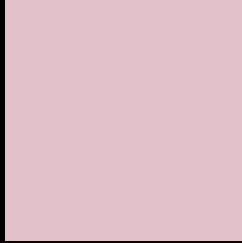
Large Text (above 18pt) WCAG AA × Fail

Any Text WCAG AA × Fail

Large Text (above 18pt) WCAG AAA × Fail

Any Text WCAG AAA × Fail

# Black Background



This preview shows how the RGB color 226, 193, 202 looks on a black background.

## Color Contrast Check

Large Text (above 18pt) WCAG AA ✓ Pass

Any Text WCAG AA ✓ Pass

Large Text (above 18pt) WCAG AAA ✓ Pass

Any Text WCAG AAA ✓ Pass

If you want to check with other color combinations, try the [Color Contrast Checker](#).



## RGB 226, 193, 202 Background



This preview shows how black text looks on a background with the RGB color 226, 193, 202.



This preview shows how white text looks on a background with the RGB color 226, 193, 202.

# Color Blindness Simulation

Color vision deficiency is a very complex topic, and I could not describe the different causes any better than Wikipedia does, so if you want to learn more, you should check out their [article about color blindness](#).


## Dichromacy



**Original Color**  
[226, 193, 202](#)

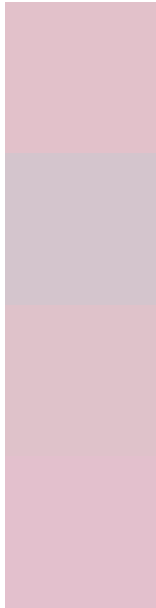
**Protanopia**  
[204, 200, 206](#)

**Deuteranopia**  
[221, 195, 202](#)



**Tritanopia**  
227, 192, 207

# Trichromacy



**Original Color**  
226, 193, 202

**Protanomaly**  
212, 197, 205

**Deuteranomaly**  
223, 194, 202

**Tritanomaly**  
227, 192, 205

# Monochromacy



**Original Color**  
226, 193, 202

**Achromatopsia**  
204, 204, 204

**Achromatomaly**  
212, 200, 203

# CSS Examples

## Text

The CSS property to change the color of the text to RGB 226, 193, 202 is called "color". The color property can be set on classes, ids or directly on the HTML element.

This example shows how text in the color `rgb(226, 193, 202)` looks like.

```
.text, #text, p{  
    color:rgb(226, 193, 202)  
}
```

If you want to add a text shadow in that color use the text-shadow property, you can generate a text shadow directly with our [CSS Text Shadow Generator](#).

Here you see how black text with a 4 pixel rgb(226, 193, 202) colored shadow looks like.

```
.shadow{ text-shadow: 4px 4px 2px rgb(226, 193, 202) }
```

## Border

The CSS property to change the border of an element to RGB 226, 193, 202 is called "border". The border property can be set on classes, ids or directly on the HTML element.

This example shows the color as border, it can be applied via the CSS property "border" or "border-color".

```
.border, #border, table{ border:4px solid rgb(226, 193, 202) }
```

If only the border color should be changed use the property `border-color`.

```
.border{ border-color:rgb(226, 193, 202) }
```

If you want to add a box shadow in that color use:

Here you see how a box with a 4 pixel `rgb(226, 193, 202)` colored shadow looks like.

```
.boxshadow{ -moz-box-shadow:4px 4px 4px  
4px rgb(226, 193, 202); -webkit-box-  
shadow:4px 4px 4px 4px rgb(226, 193, 202);  
box-shadow:4px 4px 4px 4px rgb(226, 193,  
202) }
```

# Background

The CSS property to change the background color of an element to RGB 226, 193, 202 is called "background". The background property can be set on classes, ids or directly on the HTML element.

```
.background, #background, body{  
background: rgb(226, 193, 202) }
```

If only the background color should be changed can be used:

```
.background{ background-color: rgb(226,  
193, 202) }
```

This example shows the color as background, it is applied via the CSS property "background".

To optimize and compress your CSS code, you can use our [online CSS compressor and optimizer](#) based on csstidy. If you want to create a linear or radial gradient as background or border, check our [CSS Gradient Generator](#).



Hey! You found this booklet interesting? Support Converting Colors with the new Membership Option!

The pro membership hides all ads, plus gives you double the colors in the color bucket, and more awesome pro features!

**[Learn more, Memberships starting at \\$2.50/m!](#)**

**Follow me  
on Twitter!**

@ConvertingColor