

Converting Colors

RGB(226, 83, 112)

Have a look what the booklet for
RGB(226, 83, 112) contains.

RGB(226, 83, 112)	3
<i>Conversions</i>	4
<i>Details</i>	6
<i>Harmonies</i>	11
<i>Previews</i>	23
<i>Color Blindness Simulation</i>	26
<i>CSS Examples</i>	29

Color

RGB(226, 83, 112)

Conversions

Conversions Part 1

Format	Color
Hex	E25370
RGB	226, 83, 112
RGB Percent	89%, 33%, 44%
CMY	0.1137, 0.6745, 0.5608
CMYK	0.00, 0.63, 0.50, 0.11
HSL	348°, 71%, 61%
HSV	348°, 63%, 89%
XYZ	37.3819, 23.5251, 17.8998
YIQ	129.0630, 75.9190, 39.3350

Conversions

Conversions Part 2

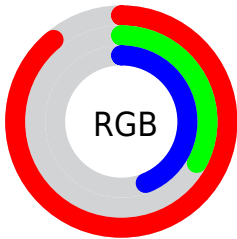
Format	Color
R_{YB}	226, 83, 112
Decimal	14832496
CIE _{Lab}	55.61, 57.67, 13.90
CIE _{LCh}	56, 59.326, 13.552
Yxy	23.5251, 0.4743, 0.2985
Android (android.graphics.Color)	4293022576 (0xFFE25370)
YUV	129.0630, -8.4121, 85.0137
Hunter-Lab	48.5027, 52.6935, 12.0711

Details

The RGB color **226, 83, 112** is a dark color, and the websafe version is hex **CC3366**. The color can be described as middle muted rose. A complement of this color would be **83, 226, 197**, and the grayscale version is **129, 129, 129**.

A 20% lighter version of the original color is **255, 139, 164**, and **165, 17, 65** is the 20% darker color. If you saturate the color by 10%, you get **226, 60, 94**, and if you desaturate by 10%, it is **226, 106, 130**.

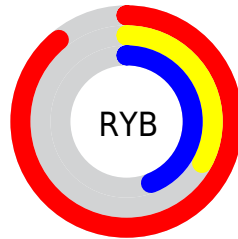
Distribution



Red (89%)

Green (33%)

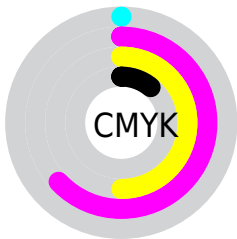
Blue (44%)



Red (89%)

Yellow (33%)

Blue (44%)

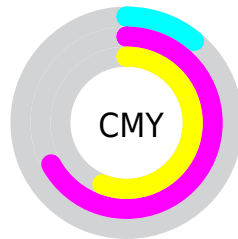


Cyan (0%)

Magenta (63%)

Yellow (50%)

Black (11%)



Cyan (11%)

Magenta (67%)

Yellow (56%)

Brightness & Saturation Gradients

These gradients show how the RGB color 226, 83, 112 changes by changing the brightness by 10 percent. The first figure shows a shift by +10% for each color and the second figure -10%.

Similar to the brightness gradients but the following saturation gradients show a change of the RGB color 226, 83, 112 by changing the saturation by 10% instead.



226, 83, 112



226, 83, 112

255, 255, 255



195, 54, 88



255, 139, 164



165, 17, 65



255, 167, 191



135, 0, 43



255, 196, 218



106, 0, 23



255, 225, 247



77, 0, 1

255, 255, 255



49, 0, 2



0, 0, 0



226, 83, 112



226, 83, 112



226, 60, 94




226, 106, 130


 226, 38, 76


 226, 128, 148

 226, 15, 58

 226, 151, 166

 226, 0, 46

 226, 173, 184

 226, 196, 202

 226, 219, 220

 226, 241, 238

 226, 255, 255

Harmonies

Analogous

The Analogous color harmony consists of three colors that are next to each other on the color wheel.



211, 88, 164



226, 83, 112



214, 99, 64

Triad

The Triadic color harmony groups three colors that are evenly spaced from another and form a triangle on the color wheel.



226, 83, 112



78, 149, 53



0, 147, 232

Complementary

The Complementary color scheme is a pair of colors which are on the opposite of each other on the color wheel.



226, 83, 112



83, 226, 197

Split Complementary

Split-complementary colors differ from the complementary color scheme. The scheme consists of three colors, the original color and two neighbors of the complement color.



0, 155, 203



226, 83, 112



0, 156, 102

Square

The Square scheme is like the rectangle color scheme, but the four colors are evenly spaced on the color wheel.



226, 83, 112



137, 138, 12



0, 157, 156



70, 131, 234

Rectangle

The Rectangle color scheme consists of four colors that form a rectangle on the color wheel.



226, 83, 112



194, 113, 36



0, 157, 156



0, 150, 225

Sweetspot

The Sweet Spot groups the original color and five complimentary colors.



226, 83, 112



255, 207, 216



195, 83, 226



128, 98, 104



0, 0, 0



128, 128, 128

Same Dimension

The Same Dimension uses a secret algorithm to generate beautiful new colors.



226, 83, 112



255, 61, 101



226, 124, 83



112, 101, 103



176, 0, 36



48, 0, 10

Inverse Universe

The Inverse Universe completely reimagines the original color for something new.



226, 83, 112



255, 61, 101



83, 185, 226



112, 101, 103



176, 0, 36



48, 0, 10

Previews

White Background



This preview shows how the RGB color 226, 83, 112 looks on a white background.

Color Contrast Check

Large Text (above 18pt) WCAG AA ✓ Pass

Any Text WCAG AA ✗ Fail

Large Text (above 18pt) WCAG AAA ✗ Fail

Any Text WCAG AAA ✗ Fail

Black Background



This preview shows how the RGB color 226, 83, 112 looks on a black background.

Color Contrast Check

Large Text (above 18pt) WCAG AA ✓ Pass

Any Text WCAG AA ✓ Pass

Large Text (above 18pt) WCAG AAA ✓ Pass

Any Text WCAG AAA × Fail

If you want to check with other color combinations, try the [Color Contrast Checker](#).

RGB 226, 83, 112 Background



This preview shows how black text looks on a background with the RGB color 226, 83, 112.



This preview shows how white text looks on a background with the RGB color 226, 83, 112.

Color Blindness Simulation

Color vision deficiency is a very complex topic, and I could not describe the different causes any better than Wikipedia does, so if you want to learn more, you should check out their [article about color blindness](#).

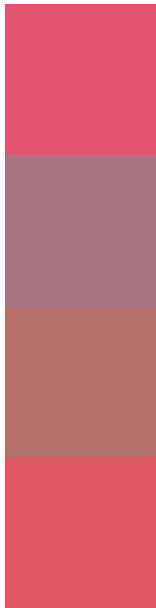
Dichromacy





Tritanopia
225, 87, 92

Trichromacy



Original Color
226, 83, 112

Protanomaly
168, 115, 129

Deuteranomaly
181, 112, 108

Tritanomaly
225, 86, 99

Monochromacy



Original Color
226, 83, 112

Achromatopsia
129, 129, 129

Achromatomaly
164, 112, 123

CSS Examples

Text

The CSS property to change the color of the text to RGB 226, 83, 112 is called "color". The color property can be set on classes, ids or directly on the HTML element.

This example shows how text in the color `rgb(226, 83, 112)` looks like.

```
.text, #text, p{  
    color:rgb(226, 83, 112)  
}
```

If you want to add a text shadow in that color use the text-shadow property, you can generate a text shadow directly with our [CSS Text Shadow Generator](#).

Here you see how black text with a 4 pixel rgb(226, 83, 112) colored shadow looks like.

```
.shadow{ text-shadow: 4px 4px 2px rgb(226, 83, 112) }
```

Border

The CSS property to change the border of an element to RGB 226, 83, 112 is called "border". The border property can be set on classes, ids or directly on the HTML element.

This example shows the color as border, it can be applied via the CSS property "border" or "border-color".

```
.border, #border, table{ border:4px solid rgb(226, 83, 112) }
```

If only the border color should be changed use the property `border-color`.

```
.border{ border-color:rgb(226, 83, 112) }
```

If you want to add a box shadow in that color use:

Here you see how a box with a 4 pixel `rgb(226, 83, 112)` colored shadow looks like.

```
.boxshadow{ -moz-box-shadow:4px 4px 4px 4px rgb(226, 83, 112); -webkit-box-shadow:4px 4px 4px 4px rgb(226, 83, 112); box-shadow:4px 4px 4px 4px rgb(226, 83, 112) }
```

Background

The CSS property to change the background color of an element to RGB 226, 83, 112 is called "background". The background property can be set on classes, ids or directly on the HTML element.

```
.background, #background, body{  
background: rgb(226, 83, 112) }
```

If only the background color should be changed can be used:

```
.background{ background-color: rgb(226, 83,  
112) }
```

This example shows the color as background, it is applied via the CSS property "background".

To optimize and compress your CSS code, you can use our [online CSS compressor and optimizer](#) based on csstidy. If you want to create a linear or radial gradient as background or border, check our [CSS Gradient Generator](#).

Hey! You found this booklet interesting? Support Converting Colors with the new Membership Option!

The pro membership hides all ads, plus gives you double the colors in the color bucket, and more awesome pro features!

[Learn more, Memberships starting at \\$2.50/m!](#)

**Follow me
on Twitter!**

@ConvertingColor