

Converting Colors

RGB(227, 105, 150)

Have a look what the booklet for
RGB(227, 105, 150) contains.

RGB(227, 105, 150)	3
<i>Conversions</i>	4
<i>Details</i>	6
<i>Harmonies</i>	11
<i>Previews</i>	23
<i>Color Blindness Simulation</i>	26
<i>CSS Examples</i>	29

Color

RGB(227, 105, 150)

Conversions

Conversions Part 1

Format	Color
Hex	E36996
RGB	227, 105, 150
RGB Percent	89%, 41%, 59%
CMY	0.1098, 0.5882, 0.4118
CMYK	0.00, 0.54, 0.34, 0.11
HSL	338°, 69%, 65%
HSV	338°, 54%, 89%
XYZ	42.2351, 28.6361, 32.1554
YIQ	146.6080, 58.2670, 39.8590

Conversions

Conversions Part 2

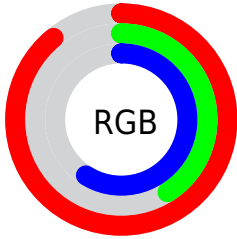
Format	Color
RYB	227, 105, 150
Decimal	14903702
CIELab	60.46, 51.98, -1.36
CIElCh	60, 52.000, 358.500
Yxy	28.6361, 0.4099, 0.2779
Android (android.graphics.Color)	4293093782 (0xFFE36996)
YUV	146.6080, 1.6723, 70.5038
Hunter-Lab	53.5127, 47.2349, 1.8319

Details

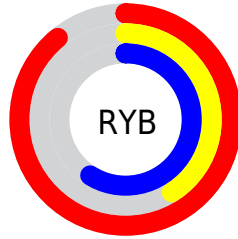
The RGB color **227, 105, 150** is a light color, and the websafe version is hex **CC6699**. A complement of this color would be **105, 227, 182**, and the grayscale version is **147, 147, 147**.

A 20% lighter version of the original color is **255, 160, 204**, and **168, 50, 99** is the 20% darker color. If you saturate the color by 10%, you get **227, 82, 136**, and if you desaturate by 10%, it is **227, 128, 164**.

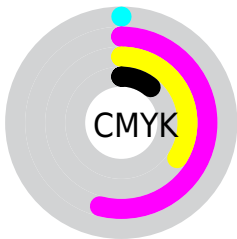
Distribution



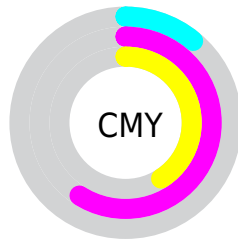
- Red (89%)
- Green (41%)
- Blue (59%)



- Red (89%)
- Yellow (41%)
- Blue (59%)



- Cyan (0%)
- Magenta (54%)
- Yellow (34%)
- Black (11%)



- Cyan (11%)
- Magenta (59%)
- Yellow (41%)

Brightness & Saturation Gradients

These gradients show how the RGB color 227, 105, 150 changes by changing the brightness by 10 percent. The first figure shows a shift by +10% for each color and the second figure -10%.

Similar to the brightness gradients but the following saturation gradients show a change of the RGB color 227, 105, 150 by changing the saturation by 10% instead.

 227, 105, 150

 227, 105, 150

255, 255, 255

 197, 78, 124


 255, 160, 204

 168, 50, 99

 255, 188, 232

 139, 16, 76

 255, 217, 255

 111, 0, 53

 255, 246, 255

 83, 0, 32

 59, 0, 7

 23, 0, 0

 0, 0, 0

 227, 105, 150

 227, 105, 150

■ 227, 82, 136

■ 227, 128, 164

■ 227, 60, 121

■ 227, 150, 179

■ 227, 37, 107

■ 227, 173, 193

■ 227, 14, 93

■ 227, 196, 207

■ 227, 0, 84

■ 227, 219, 222

■ 227, 241, 236

■ 227, 255, 250

■ 227, 255, 255

Harmonies

Analogous

The Analogous color harmony consists of three colors that are next to each other on the color wheel.



200, 116, 194



227, 105, 150



228, 110, 105

Triad

The Triadic color harmony groups three colors that are evenly spaced from another and form a triangle on the color wheel.



227, 105, 150



127, 156, 60



0, 163, 223

Complementary

The Complementary color scheme is a pair of colors which are on the opposite of each other on the color wheel.



227, 105, 150



105, 227, 182

Split Complementary

Split-complementary colors differ from the complementary color scheme. The scheme consists of three colors, the original color and two neighbors of the complement color.



0, 168, 188



227, 105, 150



66, 164, 96

Square

The Square scheme is like the rectangle color scheme, but the four colors are evenly spaced on the color wheel.



227, 105, 150



173, 143, 49



0, 168, 142



25, 152, 237

Rectangle

The Rectangle color scheme consists of four colors that form a rectangle on the color wheel.



227, 105, 150



217, 120, 79



0, 168, 142



0, 165, 214

Sweetspot

The Sweet Spot groups the original color and five complimentary colors.



227, 105, 150



255, 214, 229



180, 105, 227



128, 103, 112



0, 0, 0



128, 128, 128

Same Dimension

The Same Dimension uses a secret algorithm to generate beautiful new colors.



227, 105, 150



255, 92, 152



227, 119, 105



115, 103, 108



179, 0, 66



51, 0, 19

Inverse Universe

The Inverse Universe completely reimagines the original color for something new.



227, 105, 150



255, 92, 152



105, 213, 227



115, 103, 108



179, 0, 66



51, 0, 19

Previews

White Background



This preview shows how the RGB color 227, 105, 150 looks on a white background.

Color Contrast Check

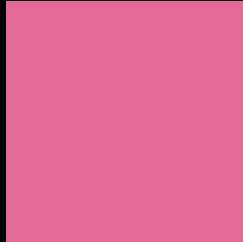
Large Text (above 18pt) WCAG AA ✓ Pass

Any Text WCAG AA ✗ Fail

Large Text (above 18pt) WCAG AAA ✗ Fail

Any Text WCAG AAA ✗ Fail

Black Background



This preview shows how the RGB color 227, 105, 150 looks on a black background.

Color Contrast Check

Large Text (above 18pt) WCAG AA ✓ Pass

Any Text WCAG AA ✓ Pass

Large Text (above 18pt) WCAG AAA ✓ Pass

Any Text WCAG AAA × Fail

If you want to check with other color combinations, try the [Color Contrast Checker](#).

RGB 227, 105, 150 Background



This preview shows how black text looks on a background with the RGB color 227, 105, 150.

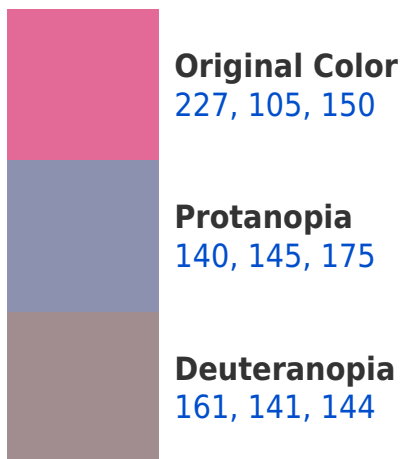



This preview shows how white text looks on a background with the RGB color 227, 105, 150.

Color Blindness Simulation

Color vision deficiency is a very complex topic, and I could not describe the different causes any better than Wikipedia does, so if you want to learn more, you should check out their [article about color blindness](#).

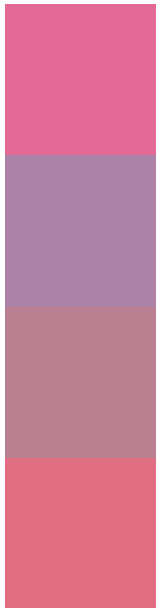
Dichromacy





Tritanopia
224, 111, 119

Trichromacy



Original Color
227, 105, 150

Protanomaly
172, 130, 166

Deuteranomaly
185, 128, 146

Tritanomaly
225, 109, 130

Monochromacy



Original Color
227, 105, 150

Achromatopsia
147, 147, 147

Achromatomaly
176, 132, 148

CSS Examples

Text

The CSS property to change the color of the text to RGB 227, 105, 150 is called "color". The color property can be set on classes, ids or directly on the HTML element.

This example shows how text in the color `rgb(227, 105, 150)` looks like.

```
.text, #text, p{  
    color:rgb(227, 105, 150)  
}
```

If you want to add a text shadow in that color use the text-shadow property, you can generate a text shadow directly with our [CSS Text Shadow Generator](#).

Here you see how black text with a 4 pixel rgb(227, 105, 150) colored shadow looks like.

```
.shadow{ text-shadow: 4px 4px 2px rgb(227, 105, 150) }
```

Border

The CSS property to change the border of an element to RGB 227, 105, 150 is called "border". The border property can be set on classes, ids or directly on the HTML element.

This example shows the color as border, it can be applied via the CSS property "border" or "border-color".

```
.border, #border, table{ border:4px solid rgb(227, 105, 150) }
```

If only the border color should be changed use the property border-color.

```
.border{ border-color:rgb(227, 105, 150) }
```

If you want to add a box shadow in that color use:

Here you see how a box with a 4 pixel rgb(227, 105, 150) colored shadow looks like.

```
.boxshadow{ -moz-box-shadow:4px 4px 4px  
4px rgb(227, 105, 150); -webkit-box-  
shadow:4px 4px 4px 4px rgb(227, 105, 150);  
box-shadow:4px 4px 4px 4px rgb(227, 105,  
150) }
```

Background

The CSS property to change the background color of an element to RGB 227, 105, 150 is called "background". The background property can be set on classes, ids or directly on the HTML element.

```
.background, #background, body{  
background: rgb(227, 105, 150) }
```

If only the background color should be changed can be used:

```
.background{ background-color: rgb(227,  
105, 150) }
```

This example shows the color as background, it is applied via the CSS property "background".

To optimize and compress your CSS code, you can use our [online CSS compressor and optimizer](#) based on csstidy. If you want to create a linear or radial gradient as background or border, check our [CSS Gradient Generator](#).

Hey! You found this booklet interesting? Support Converting Colors with the new Membership Option!

The pro membership hides all ads, plus gives you double the colors in the color bucket, and more awesome pro features!

[Learn more, Memberships starting at \\$2.50/m!](#)

**Follow me
on Twitter!**

@ConvertingColor