

Converting Colors

RGB(227, 142, 152)

Have a look what the booklet for
RGB(227, 142, 152) contains.

RGB(227, 142, 152)	3
<i>Conversions</i>	4
<i>Details</i>	6
<i>Harmonies</i>	11
<i>Previews</i>	23
<i>Color Blindness Simulation</i>	26
<i>CSS Examples</i>	29

Color

RGB(227, 142, 152)

Conversions

Conversions Part 1

Format	Color
Hex	E38E98
RGB	227, 142, 152
RGB Percent	89%, 56%, 60%
CMY	0.1098, 0.4431, 0.4039
CMYK	0.00, 0.37, 0.33, 0.11
HSL	353°, 60%, 72%
HSV	353°, 37%, 89%
XYZ	47.0191, 37.9439, 34.5515
YIQ	168.5550, 47.4500, 21.1300

Conversions

Conversions Part 2

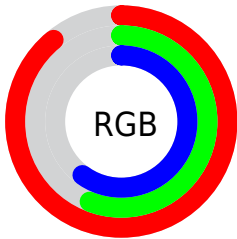
Format	Color
R_{YB}	227, 142, 152
Decimal	14913176
CIE _{Lab}	67.98, 33.46, 8.38
CIE _{LCh}	68, 34.494, 14.053
Yxy	37.9439, 0.3934, 0.3175
Android (android.graphics.Color)	4293103256 (0xFFE38E98)
YUV	168.5550, -8.1616, 51.2563
Hunter-Lab	61.5986, 28.4539, 9.8625

Details

The RGB color **227, 142, 152** is a light color, and the websafe version is hex **FF9999**. A complement of this color would be **142, 227, 217**, and the grayscale version is **169, 169, 169**.

A 20% lighter version of the original color is **255, 197, 206**, and **169, 90, 101** is the 20% darker color. If you saturate the color by 10%, you get **227, 119, 132**, and if you desaturate by 10%, it is **227, 165, 172**.

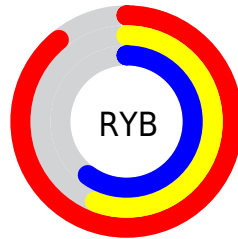
Distribution



Red (89%)

Green (56%)

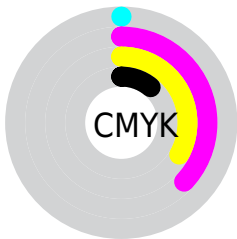
Blue (60%)



Red (89%)

Yellow (56%)

Blue (60%)

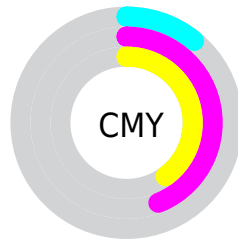


Cyan (0%)

Magenta (37%)

Yellow (33%)

Black (11%)



Cyan (11%)

Magenta (44%)

Yellow (40%)

Brightness & Saturation Gradients

These gradients show how the RGB color 227, 142, 152 changes by changing the brightness by 10 percent. The first figure shows a shift by +10% for each color and the second figure -10%.

Similar to the brightness gradients but the following saturation gradients show a change of the RGB color 227, 142, 152 by changing the saturation by 10% instead.

 227, 142, 152

 227, 142, 152

255, 255, 255

 198, 116, 126

 255, 197, 206

 169, 90, 101

 255, 225, 234

 141, 65, 77

255, 254, 255

 114, 41, 55

 87, 15, 33


 62, 0, 11

 38, 0, 1

 0, 0, 0

 227, 142, 152

 227, 142, 152

 227, 119, 132

 227, 165, 172

 227, 97, 112

 227, 187, 192

 227, 74, 92

 227, 210, 212

 227, 51, 72

 227, 233, 232

 227, 29, 52

 227, 255, 252

 227, 6, 32

 227, 255, 255

 227, 0, 27

Harmonies

Analogous

The Analogous color harmony consists of three colors that are next to each other on the color wheel.



216, 144, 184



227, 142, 152



221, 148, 124

Triad

The Triadic color harmony groups three colors that are evenly spaced from another and form a triangle on the color wheel.



227, 142, 152



137, 177, 120



95, 174, 225

Complementary

The Complementary color scheme is a pair of colors which are on the opposite of each other on the color wheel.



227, 142, 152



142, 227, 217

Split Complementary

Split-complementary colors differ from the complementary color scheme. The scheme consists of three colors, the original color and two neighbors of the complement color.



53, 180, 208



227, 142, 152



99, 181, 148

Square

The Square scheme is like the rectangle color scheme, but the four colors are evenly spaced on the color wheel.



227, 142, 152



172, 168, 104



61, 183, 180



145, 164, 226

Rectangle

The Rectangle color scheme consists of four colors that form a rectangle on the color wheel.



227, 142, 152



209, 154, 110



61, 183, 180



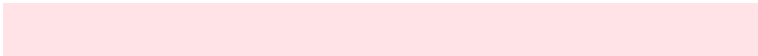
78, 176, 221

Sweetspot

The Sweet Spot groups the original color and five complimentary colors.



227, 142, 152



255, 227, 230



216, 142, 227



128, 111, 113



0, 0, 0



128, 128, 128

Same Dimension

The Same Dimension uses a secret algorithm to generate beautiful new colors.



227, 142, 152



255, 140, 154



227, 173, 142



115, 103, 105



179, 0, 21



51, 0, 6

Inverse Universe

The Inverse Universe completely reimagines the original color for something new.



227, 142, 152



255, 140, 154



142, 196, 227



115, 103, 105



179, 0, 21



51, 0, 6

Previews

White Background



This preview shows how the RGB color 227, 142, 152 looks on a white background.

Color Contrast Check

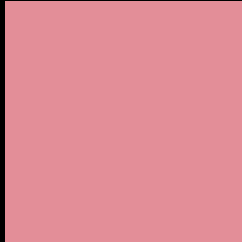
Large Text (above 18pt) WCAG AA × Fail

Any Text WCAG AA × Fail

Large Text (above 18pt) WCAG AAA × Fail

Any Text WCAG AAA × Fail

Black Background



This preview shows how the RGB color 227, 142, 152 looks on a black background.

Color Contrast Check

Large Text (above 18pt) WCAG AA ✓ Pass

Any Text WCAG AA ✓ Pass

Large Text (above 18pt) WCAG AAA ✓ Pass

Any Text WCAG AAA ✓ Pass

If you want to check with other color combinations, try the [Color Contrast Checker](#).

RGB 227, 142, 152 Background



This preview shows how black text looks on a background with the RGB color 227, 142, 152.



This preview shows how white text looks on a background with the RGB color 227, 142, 152.

Color Blindness Simulation

Color vision deficiency is a very complex topic, and I could not describe the different causes any better than Wikipedia does, so if you want to learn more, you should check out their [article about color blindness](#).

Dichromacy



Original Color
227, 142, 152

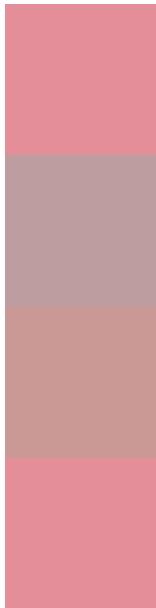
Protanopia
169, 165, 165

Deuteranopia
188, 160, 149



Tritanopia
227, 142, 153

Trichromacy



Original Color
227, 142, 152

Protanomaly
190, 157, 160

Deuteranomaly
202, 153, 150

Tritanomaly
227, 142, 153

Monochromacy



Original Color
227, 142, 152

Achromatopsia
169, 169, 169

Achromatomaly
190, 159, 163

CSS Examples

Text

The CSS property to change the color of the text to RGB 227, 142, 152 is called "color". The color property can be set on classes, ids or directly on the HTML element.

This example shows how text in the color `rgb(227, 142, 152)` looks like.

```
.text, #text, p{  
    color:rgb(227, 142, 152)  
}
```

If you want to add a text shadow in that color use the text-shadow property, you can generate a text shadow directly with our [CSS Text Shadow Generator](#).

Here you see how black text with a 4 pixel rgb(227, 142, 152) colored shadow looks like.

```
.shadow{ text-shadow: 4px 4px 2px rgb(227, 142, 152) }
```

Border

The CSS property to change the border of an element to RGB 227, 142, 152 is called "border". The border property can be set on classes, ids or directly on the HTML element.

This example shows the color as border, it can be applied via the CSS property "border" or "border-color".

```
.border, #border, table{ border:4px solid rgb(227, 142, 152) }
```

If only the border color should be changed use the property `border-color`.

```
.border{ border-color:rgb(227, 142, 152) }
```

If you want to add a box shadow in that color use:

Here you see how a box with a 4 pixel `rgb(227, 142, 152)` colored shadow looks like.

```
.boxshadow{ -moz-box-shadow:4px 4px 4px  
4px rgb(227, 142, 152); -webkit-box-  
shadow:4px 4px 4px 4px rgb(227, 142, 152);  
box-shadow:4px 4px 4px 4px rgb(227, 142,  
152) }
```

Background

The CSS property to change the background color of an element to RGB 227, 142, 152 is called "background". The background property can be set on classes, ids or directly on the HTML element.

```
.background, #background, body{  
background: rgb(227, 142, 152) }
```

If only the background color should be changed can be used:

```
.background{ background-color: rgb(227,  
142, 152) }
```

This example shows the color as background, it is applied via the CSS property "background".

To optimize and compress your CSS code, you can use our [online CSS compressor and optimizer](#) based on csstidy. If you want to create a linear or radial gradient as background or border, check our [CSS Gradient Generator](#).

Hey! You found this booklet interesting? Support Converting Colors with the new Membership Option!

The pro membership hides all ads, plus gives you double the colors in the color bucket, and more awesome pro features!

[Learn more, Memberships starting at \\$2.50/m!](#)

**Follow me
on Twitter!**

@ConvertingColor