

Converting Colors

RGB(227, 170, 179)

Have a look what the booklet for
RGB(227, 170, 179) contains.

RGB(227, 170, 179)	3
<i>Conversions</i>	4
<i>Details</i>	6
<i>Harmonies</i>	11
<i>Previews</i>	23
<i>Color Blindness Simulation</i>	26
<i>CSS Examples</i>	29

Color

RGB(227, 170, 179)

Conversions

Conversions Part 1

Format	Color
Hex	E3AAB3
RGB	227, 170, 179
RGB Percent	89%, 67%, 70%
CMY	0.1098, 0.3333, 0.2980
CMYK	0.00, 0.25, 0.21, 0.11
HSL	351°, 50%, 78%
HSV	351°, 25%, 89%
XYZ	54.1900, 48.3350, 49.1213
YIQ	188.0690, 31.0830, 14.8830

Conversions

Conversions Part 2

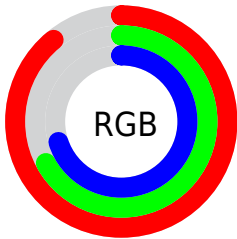
Format	Color
R _Y B	227, 170, 179
Decimal	14920371
CIE Lab	75.04, 22.21, 3.57
CIE LCh	75, 22.490, 9.126
Yxy	48.3350, 0.3573, 0.3187
Android (android.graphics.Color)	4293110451 (0xFFE3AAB3)
YUV	188.0690, -4.4710, 34.1425
Hunter-Lab	69.5234, 17.4658, 6.7754

Details

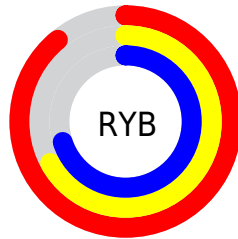
The RGB color **227, 170, 179** is a light color, and the websafe version is hex **CC9999**. A complement of this color would be **170, 227, 218**, and the grayscale version is **188, 188, 188**.

A 20% lighter version of the original color is **255, 226, 235**, and **171, 117, 126** is the 20% darker color. If you saturate the color by 10%, you get **227, 147, 160**, and if you desaturate by 10%, it is **227, 193, 198**.

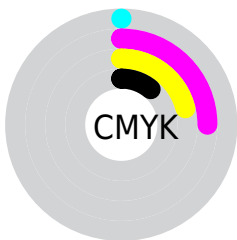
Distribution



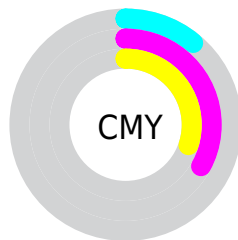
- Red (89%)
- Green (67%)
- Blue (70%)



- Red (89%)
- Yellow (67%)
- Blue (70%)



- Cyan (0%)
- Magenta (25%)
- Yellow (21%)
- Black (11%)



- Cyan (11%)
- Magenta (33%)
- Yellow (30%)

Brightness & Saturation Gradients

These gradients show how the RGB color 227, 170, 179 changes by changing the brightness by 10 percent. The first figure shows a shift by +10% for each color and the second figure -10%.

Similar to the brightness gradients but the following saturation gradients show a change of the RGB color 227, 170, 179 by changing the saturation by 10% instead.

 227, 170, 179


255, 255, 255

 255, 226, 235

255, 254, 255


 227, 170, 179

 199, 143, 152

 171, 117, 126

 144, 92, 101

 117, 68, 78


 91, 45, 55

 67, 23, 34

 44, 0, 11

 2, 0, 0


 0, 0, 0

 227, 170, 179

 227, 170, 179

 227, 147, 160

 227, 193, 198

 227, 125, 141

 227, 215, 217

 227, 102, 122

 227, 238, 236

 227, 79, 103

 227, 255, 255

 227, 56, 83

 227, 34, 64

 227, 11, 45

 227, 0, 36

Harmonies

Analogous

The Analogous color harmony consists of three colors that are next to each other on the color wheel.



217, 172, 200



227, 170, 179



225, 173, 160

Triad

The Triadic color harmony groups three colors that are evenly spaced from another and form a triangle on the color wheel.



227, 170, 179



171, 191, 152



143, 191, 223

Complementary

The Complementary color scheme is a pair of colors which are on the opposite of each other on the color wheel.



227, 170, 179



170, 227, 218

Split Complementary

Split-complementary colors differ from the complementary color scheme. The scheme consists of three colors, the original color and two neighbors of the complement color.



128, 195, 210



227, 170, 179



148, 195, 169

Square

The Square scheme is like the rectangle color scheme, but the four colors are evenly spaced on the color wheel.



227, 170, 179



194, 185, 144



131, 197, 191



169, 184, 225

Rectangle

The Rectangle color scheme consists of four colors that form a rectangle on the color wheel.



227, 170, 179



218, 176, 150



131, 197, 191



136, 193, 220

Sweetspot

The Sweet Spot groups the original color and five complimentary colors.



227, 170, 179



255, 235, 238



218, 170, 227



128, 115, 117



0, 0, 0



128, 128, 128

Same Dimension

The Same Dimension uses a secret algorithm to generate beautiful new colors.



227, 170, 179



255, 179, 191



227, 189, 170



115, 103, 105



179, 0, 28



51, 0, 8

Inverse Universe

The Inverse Universe completely reimagines the original color for something new.



227, 170, 179



255, 179, 191



170, 208, 227



115, 103, 105



179, 0, 28



51, 0, 8

Previews

White Background



This preview shows how the RGB color 227, 170, 179 looks on a white background.

Color Contrast Check

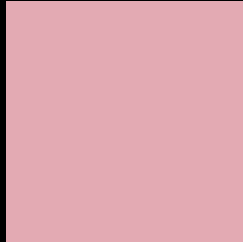
Large Text (above 18pt) WCAG AA × Fail

Any Text WCAG AA × Fail

Large Text (above 18pt) WCAG AAA × Fail

Any Text WCAG AAA × Fail

Black Background



This preview shows how the RGB color 227, 170, 179 looks on a black background.

Color Contrast Check

Large Text (above 18pt) WCAG AA ✓ Pass

Any Text WCAG AA ✓ Pass

Large Text (above 18pt) WCAG AAA ✓ Pass

Any Text WCAG AAA ✓ Pass

If you want to check with other color combinations, try the [Color Contrast Checker](#).

RGB 227, 170, 179 Background



This preview shows how black text looks on a background with the RGB color 227, 170, 179.



This preview shows how white text looks on a background with the RGB color 227, 170, 179.

Color Blindness Simulation

Color vision deficiency is a very complex topic, and I could not describe the different causes any better than Wikipedia does, so if you want to learn more, you should check out their [article about color blindness](#).

Dichromacy



Original Color
227, 170, 179

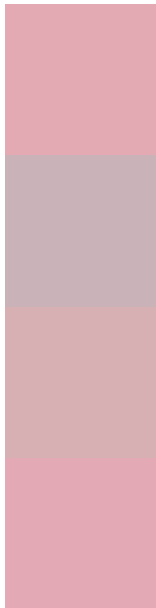
Protanopia
188, 184, 187

Deuteranopia
206, 179, 177



Tritanopia
227, 169, 182

Trichromacy



Original Color

227, 170, 179

Protanomaly

202, 179, 184

Deuteranomaly

214, 176, 178

Tritanomaly

227, 169, 181

Monochromacy



Original Color

227, 170, 179

Achromatopsia

188, 188, 188

Achromatomaly

202, 181, 185

CSS Examples

Text

The CSS property to change the color of the text to RGB 227, 170, 179 is called "color". The color property can be set on classes, ids or directly on the HTML element.

This example shows how text in the color `rgb(227, 170, 179)` looks like.

```
.text, #text, p{  
    color:rgb(227, 170, 179)  
}
```

If you want to add a text shadow in that color use the text-shadow property, you can generate a text shadow directly with our [CSS Text Shadow Generator](#).

Here you see how black text with a 4 pixel rgb(227, 170, 179) colored shadow looks like.

```
.shadow{ text-shadow: 4px 4px 2px rgb(227, 170, 179) }
```

Border

The CSS property to change the border of an element to RGB 227, 170, 179 is called "border". The border property can be set on classes, ids or directly on the HTML element.

This example shows the color as border, it can be applied via the CSS property "border" or "border-color".

```
.border, #border, table{ border:4px solid rgb(227, 170, 179) }
```

If only the border color should be changed use the property `border-color`.

```
.border{ border-color:rgb(227, 170, 179) }
```

If you want to add a box shadow in that color use:

Here you see how a box with a 4 pixel `rgb(227, 170, 179)` colored shadow looks like.

```
.boxshadow{ -moz-box-shadow:4px 4px 4px 4px rgb(227, 170, 179); -webkit-box-shadow:4px 4px 4px 4px rgb(227, 170, 179); box-shadow:4px 4px 4px 4px rgb(227, 170, 179) }
```

Background

The CSS property to change the background color of an element to RGB 227, 170, 179 is called "background". The background property can be set on classes, ids or directly on the HTML element.

```
.background, #background, body{  
background: rgb(227, 170, 179) }
```

If only the background color should be changed can be used:

```
.background{ background-color: rgb(227,  
170, 179) }
```

This example shows the color as background, it is applied via the CSS property "background".

To optimize and compress your CSS code, you can use our [online CSS compressor and optimizer](#) based on csstidy. If you want to create a linear or radial gradient as background or border, check our [CSS Gradient Generator](#).

Hey! You found this booklet interesting? Support Converting Colors with the new Membership Option!

The pro membership hides all ads, plus gives you double the colors in the color bucket, and more awesome pro features!

[Learn more, Memberships starting at \\$2.50/m!](#)

**Follow me
on Twitter!**

@ConvertingColor