

Converting Colors

RGB(227, 173, 182)

Have a look what the booklet for
RGB(227, 173, 182) contains.

RGB(227, 173, 182)	3
<i>Conversions</i>	4
<i>Details</i>	6
<i>Harmonies</i>	11
<i>Previews</i>	23
<i>Color Blindness Simulation</i>	26
<i>CSS Examples</i>	29

Color

RGB(227, 173, 182)

Conversions

Conversions Part 1

Format	Color
Hex	E3ADB6
RGB	227, 173, 182
RGB Percent	89%, 68%, 71%
CMY	0.1098, 0.3216, 0.2863
CMYK	0.00, 0.24, 0.20, 0.11
HSL	350°, 49%, 78%
HSV	350°, 24%, 89%
XYZ	55.0656, 49.5954, 50.9266
YIQ	190.1720, 29.2950, 14.2470

Conversions

Conversions Part 2

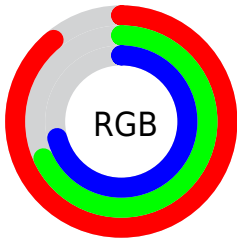
Format	Color
R _Y B	227, 173, 182
Decimal	14921142
CIE Lab	75.82, 21.05, 3.06
CIE LCh	76, 21.267, 8.282
Yxy	49.5954, 0.3539, 0.3188
Android (android.graphics.Color)	4293111222 (0xFFE3ADB6)
YUV	190.1720, -4.0288, 32.2982
Hunter-Lab	70.4240, 16.3298, 6.4217

Details

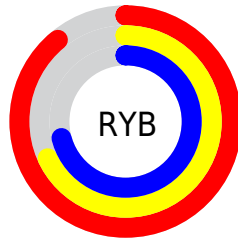
The RGB color **227, 173, 182** is a light color, and the websafe version is hex **CC9999**. A complement of this color would be **173, 227, 218**, and the grayscale version is **190, 190, 190**.

A 20% lighter version of the original color is **255, 229, 238**, and **171, 120, 129** is the 20% darker color. If you saturate the color by 10%, you get **227, 150, 163**, and if you desaturate by 10%, it is **227, 196, 201**.

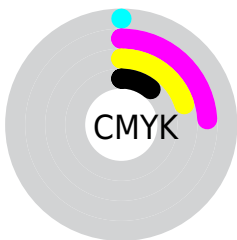
Distribution



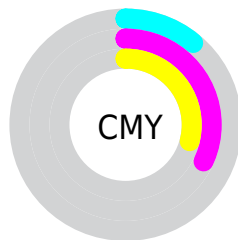
- Red (89%)
- Green (68%)
- Blue (71%)



- Red (89%)
- Yellow (68%)
- Blue (71%)



- Cyan (0%)
- Magenta (24%)
- Yellow (20%)
- Black (11%)




- Cyan (11%)
- Magenta (32%)
- Yellow (29%)

Brightness & Saturation Gradients

These gradients show how the RGB color 227, 173, 182 changes by changing the brightness by 10 percent. The first figure shows a shift by +10% for each color and the second figure -10%.

Similar to the brightness gradients but the following saturation gradients show a change of the RGB color 227, 173, 182 by changing the saturation by 10% instead.


 227, 173, 182

255, 255, 255

 255, 229, 238

 227, 173, 182

 199, 146, 155

 171, 120, 129

 144, 95, 104

 117, 71, 80

 92, 48, 57

 67, 26, 36

 44, 3, 14

 8, 0, 0

 0, 0, 0

■ 227, 173, 182

■ 227, 173, 182

■ 227, 150, 163

■ 227, 196, 201

■ 227, 128, 144

■ 227, 218, 220

■ 227, 105, 125

■ 227, 241, 239

■ 227, 82, 106

■ 227, 255, 255

■ 227, 60, 87

■ 227, 37, 69

■ 227, 14, 50

■ 227, 0, 38

Harmonies

Analogous

The Analogous color harmony consists of three colors that are next to each other on the color wheel.



217, 175, 202



227, 173, 182



226, 175, 163

Triad

The Triadic color harmony groups three colors that are evenly spaced from another and form a triangle on the color wheel.



227, 173, 182



174, 193, 156



147, 193, 223

Complementary

The Complementary color scheme is a pair of colors which are on the opposite of each other on the color wheel.



227, 173, 182



173, 227, 218

Split Complementary

Split-complementary colors differ from the complementary color scheme. The scheme consists of three colors, the original color and two neighbors of the complement color.



134, 197, 210



227, 173, 182



153, 197, 172

Square

The Square scheme is like the rectangle color scheme, but the four colors are evenly spaced on the color wheel.



227, 173, 182



196, 187, 148



137, 198, 192



171, 187, 225

Rectangle

The Rectangle color scheme consists of four colors that form a rectangle on the color wheel.



227, 173, 182



219, 179, 154



137, 198, 192



141, 194, 220

Sweetspot

The Sweet Spot groups the original color and five complimentary colors.



227, 173, 182



255, 237, 240



218, 173, 227



128, 117, 119



0, 0, 0



128, 128, 128

Same Dimension

The Same Dimension uses a secret algorithm to generate beautiful new colors.



227, 173, 182



255, 181, 193



227, 191, 173



115, 103, 105



179, 0, 30



51, 0, 9

Inverse Universe

The Inverse Universe completely reimagines the original color for something new.



227, 173, 182



255, 181, 193



173, 209, 227



115, 103, 105



179, 0, 30



51, 0, 8

Previews

White Background



This preview shows how the RGB color 227, 173, 182 looks on a white background.

Color Contrast Check

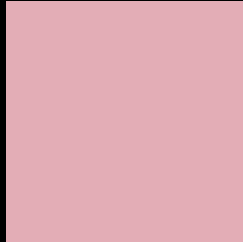
Large Text (above 18pt) WCAG AA × Fail

Any Text WCAG AA × Fail

Large Text (above 18pt) WCAG AAA × Fail

Any Text WCAG AAA × Fail

Black Background



This preview shows how the RGB color 227, 173, 182 looks on a black background.

Color Contrast Check

Large Text (above 18pt) WCAG AA ✓ Pass

Any Text WCAG AA ✓ Pass

Large Text (above 18pt) WCAG AAA ✓ Pass

Any Text WCAG AAA ✓ Pass

If you want to check with other color combinations, try the [Color Contrast Checker](#).

RGB 227, 173, 182 Background



This preview shows how black text looks on a background with the RGB color 227, 173, 182.

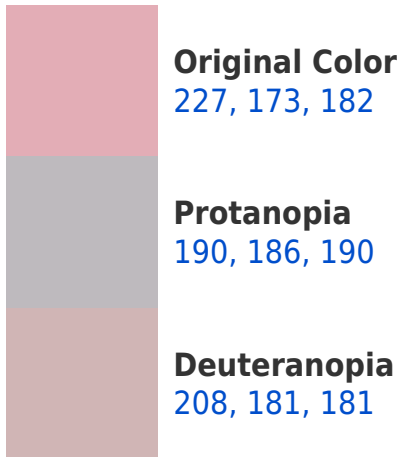


This preview shows how white text looks on a background with the RGB color 227, 173, 182.

Color Blindness Simulation

Color vision deficiency is a very complex topic, and I could not describe the different causes any better than Wikipedia does, so if you want to learn more, you should check out their [article about color blindness](#).

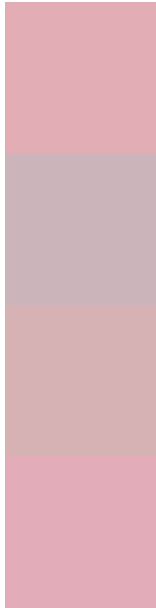
Dichromacy





Tritanopia
227, 172, 186

Trichromacy



Original Color
227, 173, 182

Protanomaly
203, 181, 187

Deuteranomaly
215, 178, 181

Tritanomaly
227, 172, 185

Monochromacy



Original Color
227, 173, 182

Achromatopsia
190, 190, 190

Achromatomaly
203, 184, 187

CSS Examples

Text

The CSS property to change the color of the text to RGB 227, 173, 182 is called "color". The color property can be set on classes, ids or directly on the HTML element.

This example shows how text in the color `rgb(227, 173, 182)` looks like.

```
.text, #text, p{  
    color:rgb(227, 173, 182)  
}
```

If you want to add a text shadow in that color use the text-shadow property, you can generate a text shadow directly with our [CSS Text Shadow Generator](#).

Here you see how black text with a 4 pixel rgb(227, 173, 182) colored shadow looks like.

```
.shadow{ text-shadow: 4px 4px 2px rgb(227, 173, 182) }
```

Border

The CSS property to change the border of an element to RGB 227, 173, 182 is called "border". The border property can be set on classes, ids or directly on the HTML element.

This example shows the color as border, it can be applied via the CSS property "border" or "border-color".

```
.border, #border, table{ border:4px solid rgb(227, 173, 182) }
```

If only the border color should be changed use the property `border-color`.

```
.border{ border-color:rgb(227, 173, 182) }
```

If you want to add a box shadow in that color use:

Here you see how a box with a 4 pixel `rgb(227, 173, 182)` colored shadow looks like.

```
.boxshadow{ -moz-box-shadow:4px 4px 4px  
4px rgb(227, 173, 182); -webkit-box-  
shadow:4px 4px 4px 4px rgb(227, 173, 182);  
box-shadow:4px 4px 4px 4px rgb(227, 173,  
182) }
```

Background

The CSS property to change the background color of an element to RGB 227, 173, 182 is called "background". The background property can be set on classes, ids or directly on the HTML element.

```
.background, #background, body{  
background: rgb(227, 173, 182) }
```

If only the background color should be changed can be used:

```
.background{ background-color: rgb(227,  
173, 182) }
```

This example shows the color as background, it is applied via the CSS property "background".

To optimize and compress your CSS code, you can use our [online CSS compressor and optimizer](#) based on csstidy. If you want to create a linear or radial gradient as background or border, check our [CSS Gradient Generator](#).

Hey! You found this booklet interesting? Support Converting Colors with the new Membership Option!

The pro membership hides all ads, plus gives you double the colors in the color bucket, and more awesome pro features!

[Learn more, Memberships starting at \\$2.50/m!](#)

**Follow me
on Twitter!**

@ConvertingColor