

# Converting Colors

RGB(227, 198, 200)

Have a look what the booklet for  
RGB(227, 198, 200) contains.

<b>RGB(227, 198, 200)</b> .....	3
<b><i>Conversions</i></b> .....	4
<b><i>Details</i></b> .....	6
<b><i>Harmonies</i></b> .....	11
<b><i>Previews</i></b> .....	23
<b><i>Color Blindness Simulation</i></b> .....	26
<b><i>CSS Examples</i></b> .....	29

# **Color**

**RGB(227, 198, 200)**

# Conversions

## Conversions Part 1

Format	Color
Hex	E3C6C8
RGB	227, 198, 200
RGB Percent	89%, 78%, 78%
CMY	0.1098, 0.2235, 0.2157
CMYK	0.00, 0.13, 0.12, 0.11
HSL	356°, 34%, 83%
HSV	356°, 13%, 89%
XYZ	62.2980, 60.8892, 63.1129
YIQ	206.8990, 16.6420, 6.7700

# Conversions

## Conversions Part 2

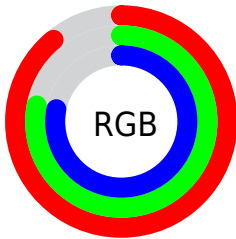
Format	Color
R <sub>Y</sub> B	227, 198, 200
Decimal	14927560
CIE Lab	82.32, 10.54, 2.76
CIE LCh	82, 10.891, 14.676
Yxy	60.8892, 0.3344, 0.3268
Android (android.graphics.Color)	4293117640 (0xFFE3C6C8)
YUV	206.8990, -3.4012, 17.6286
Hunter-Lab	78.0315, 5.9537, 6.6675

# Details

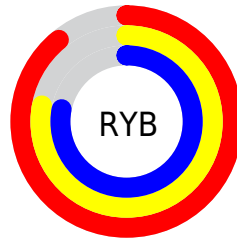
The RGB color **227, 198, 200** is a light color, and the websafe version is hex **FFCCCC**. A complement of this color would be **198, 227, 225**, and the grayscale version is **207, 207, 207**.

A 20% lighter version of the original color is 255, 255, 255, and **171, 144, 146** is the 20% darker color. If you saturate the color by 10%, you get **227, 175, 179**, and if you desaturate by 10%, it is **227, 221, 221**.

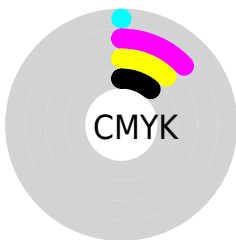
# Distribution



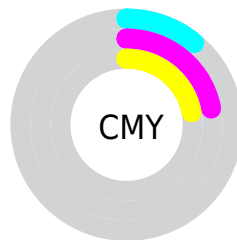
- Red (89%)
- Green (78%)
- Blue (78%)



- Red (89%)
- Yellow (78%)
- Blue (78%)



- Cyan (0%)
- Magenta (13%)
- Yellow (12%)
- Black (11%)




- Cyan (11%)
- Magenta (22%)
- Yellow (22%)

# Brightness & Saturation Gradients

These gradients show how the RGB color 227, 198, 200 changes by changing the brightness by 10 percent. The first figure shows a shift by +10% for each color and the second figure -10%.

Similar to the brightness gradients but the following saturation gradients show a change of the RGB color 227, 198, 200 by changing the saturation by 10% instead.





 227, 198, 200

255, 255, 255

255, 255, 255


 227, 198, 200

 199, 171, 173

 171, 144, 146

 145, 118, 120

 119, 94, 96


 94, 70, 72


 70, 48, 50


 47, 27, 29

 28, 0, 2


 0, 0, 0

 227, 198, 200

 227, 198, 200

 227, 175, 179


 227, 221, 221

 227, 153, 158

 227, 243, 242

 227, 130, 137

 227, 255, 255

 227, 107, 115

 227, 85, 94

 227, 62, 73

 227, 39, 52

 227, 16, 31

 227, 0, 16

# Harmonies

## Analogous

The Analogous color harmony consists of three colors that are next to each other on the color wheel.



223, 198, 210



227, 198, 200



225, 199, 191

# Triad

The Triadic color harmony groups three colors that are evenly spaced from another and form a triangle on the color wheel.



227, 198, 200



196, 209, 190



188, 207, 224

# Complementary

The Complementary color scheme is a pair of colors which are on the opposite of each other on the color wheel.



227, 198, 200



198, 227, 225

# Split Complementary

Split-complementary colors differ from the complementary color scheme. The scheme consists of three colors, the original color and two neighbors of the complement color.



181, 210, 219



227, 198, 200



186, 211, 199

# Square

The Square scheme is like the rectangle color scheme, but the four colors are evenly spaced on the color wheel.



227, 198, 200



208, 206, 185



180, 211, 210



200, 204, 224

# Rectangle

The Rectangle color scheme consists of four colors that form a rectangle on the color wheel.



227, 198, 200



221, 201, 187



180, 211, 210



185, 208, 223



# Sweetspot

The Sweet Spot groups the original color and five complimentary colors.



227, 198, 200



255, 245, 246



225, 198, 227



128, 121, 122



0, 0, 0



128, 128, 128



# Same Dimension

The Same Dimension uses a secret algorithm to generate beautiful new colors.



227, 198, 200



255, 217, 219



227, 210, 198



115, 103, 104



179, 0, 12



51, 0, 4



# Inverse Universe

The Inverse Universe completely reimagines the original color for something new.



227, 198, 200



255, 217, 219



198, 215, 227



115, 103, 104



179, 0, 12

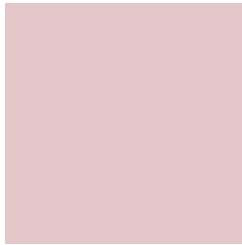


51, 0, 4



# Previews

## White Background



This preview shows how the RGB color 227, 198, 200 looks on a white background.

## Color Contrast Check

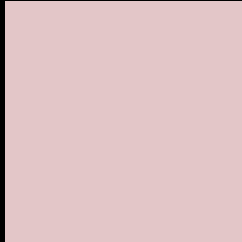
Large Text (above 18pt) WCAG AA × Fail

Any Text WCAG AA × Fail

Large Text (above 18pt) WCAG AAA × Fail

Any Text WCAG AAA × Fail

# Black Background



This preview shows how the RGB color 227, 198, 200 looks on a black background.

## Color Contrast Check

Large Text (above 18pt) WCAG AA ✓ Pass

Any Text WCAG AA ✓ Pass

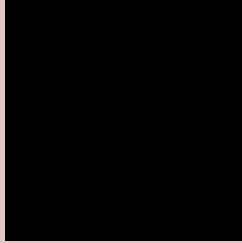
Large Text (above 18pt) WCAG AAA ✓ Pass

Any Text WCAG AAA ✓ Pass

If you want to check with other color combinations, try the [Color Contrast Checker](#).



## RGB 227, 198, 200 Background



This preview shows how black text looks on a background with the RGB color 227, 198, 200.



This preview shows how white text looks on a background with the RGB color 227, 198, 200.

# Color Blindness Simulation

Color vision deficiency is a very complex topic, and I could not describe the different causes any better than Wikipedia does, so if you want to learn more, you should check out their [article about color blindness](#).


## Dichromacy



**Original Color**  
227, 198, 200

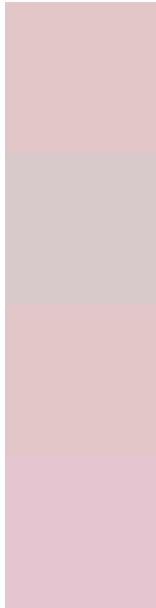
**Protanopia**  
209, 204, 203

**Deuteranopia**  
226, 198, 200



**Tritanopia**  
229, 196, 212

# Trichromacy



**Original Color**  
227, 198, 200

**Protanomaly**  
216, 202, 202

**Deuteranomaly**  
226, 198, 200

**Tritanomaly**  
228, 197, 208

# Monochromacy



**Original Color**  
227, 198, 200

**Achromatopsia**  
207, 207, 207

**Achromatomaly**  
214, 204, 204

# CSS Examples

## Text

The CSS property to change the color of the text to RGB 227, 198, 200 is called "color". The color property can be set on classes, ids or directly on the HTML element.

This example shows how text in the color `rgb(227, 198, 200)` looks like.

```
.text, #text, p{  
    color:rgb(227, 198, 200)  
}
```

If you want to add a text shadow in that color use the text-shadow property, you can generate a text shadow directly with our [CSS Text Shadow Generator](#).

Here you see how black text with a 4 pixel rgb(227, 198, 200) colored shadow looks like.

```
.shadow{ text-shadow: 4px 4px 2px rgb(227, 198, 200) }
```

## Border

The CSS property to change the border of an element to RGB 227, 198, 200 is called "border". The border property can be set on classes, ids or directly on the HTML element.

This example shows the color as border, it can be applied via the CSS property "border" or "border-color".

```
.border, #border, table{ border:4px solid rgb(227, 198, 200) }
```

If only the border color should be changed use the property `border-color`.

```
.border{ border-color:rgb(227, 198, 200) }
```

If you want to add a box shadow in that color use:

Here you see how a box with a 4 pixel `rgb(227, 198, 200)` colored shadow looks like.

```
.boxshadow{ -moz-box-shadow:4px 4px 4px  
4px rgb(227, 198, 200); -webkit-box-  
shadow:4px 4px 4px 4px rgb(227, 198, 200);  
box-shadow:4px 4px 4px 4px rgb(227, 198,  
200) }
```

# Background

The CSS property to change the background color of an element to RGB 227, 198, 200 is called "background". The background property can be set on classes, ids or directly on the HTML element.

```
.background, #background, body{  
background: rgb(227, 198, 200) }
```

If only the background color should be changed can be used:

```
.background{ background-color: rgb(227,  
198, 200) }
```

This example shows the color as background, it is applied via the CSS property "background".

To optimize and compress your CSS code, you can use our [online CSS compressor and optimizer](#) based on csstidy. If you want to create a linear or radial gradient as background or border, check our [CSS Gradient Generator](#).



Hey! You found this booklet interesting? Support Converting Colors with the new Membership Option!

The pro membership hides all ads, plus gives you double the colors in the color bucket, and more awesome pro features!

**[Learn more, Memberships starting at \\$2.50/m!](#)**

**Follow me  
on Twitter!**

@ConvertingColor