

Converting Colors

RGB(227, 203, 201)

Have a look what the booklet for
RGB(227, 203, 201) contains.

RGB(227, 203, 201)	3
<i>Conversions</i>	4
<i>Details</i>	6
<i>Harmonies</i>	11
<i>Previews</i>	23
<i>Color Blindness Simulation</i>	26
<i>CSS Examples</i>	29

Color

RGB(227, 203, 201)

Conversions

Conversions Part 1

Format	Color
Hex	E3CBC9
RGB	227, 203, 201
RGB Percent	89%, 80%, 79%
CMY	0.1098, 0.2039, 0.2118
CMYK	0.00, 0.11, 0.11, 0.11
HSL	5°, 32%, 84%
HSV	5°, 11%, 89%
XYZ	63.5771, 63.2598, 64.1178
YIQ	209.9480, 14.9460, 4.4660

Conversions

Conversions Part 2

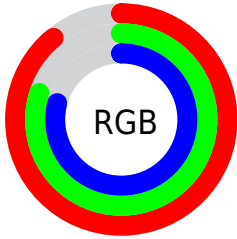
Format	Color
R_{YB}	227, 203, 201
Decimal	14928841
CIE Lab	83.58, 8.06, 4.05
CIE LCh	84, 9.019, 26.688
Yxy	63.2598, 0.3329, 0.3313
Android (android.graphics.Color)	4293118921 (0xFFE3CBC9)
YUV	209.9480, -4.4114, 14.9546
Hunter-Lab	79.5360, 3.4959, 7.8787

Details

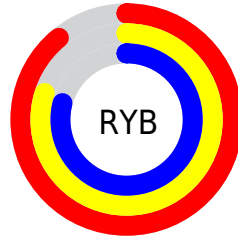
The RGB color **227, 203, 201** is a light color, and the websafe version is hex **CCCCCC**. A complement of this color would be **201, 225, 227**, and the grayscale version is **210, 210, 210**.

A 20% lighter version of the original color is 255, 255, 255, and **171, 149, 147** is the 20% darker color. If you saturate the color by 10%, you get **227, 182, 178**, and if you desaturate by 10%, it is **227, 224, 224**.

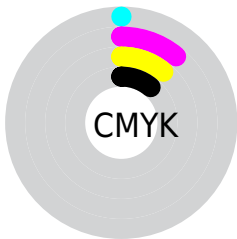
Distribution



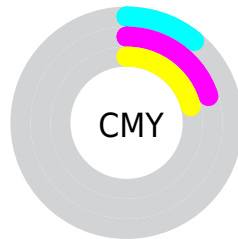
- Red (89%)
- Green (80%)
- Blue (79%)



- Red (89%)
- Yellow (80%)
- Blue (79%)



- Cyan (0%)
- Magenta (11%)
- Yellow (11%)
- Black (11%)



- Cyan (11%)
- Magenta (20%)
- Yellow (21%)

Brightness & Saturation Gradients

These gradients show how the RGB color 227, 203, 201 changes by changing the brightness by 10 percent. The first figure shows a shift by +10% for each color and the second figure -10%.

Similar to the brightness gradients but the following saturation gradients show a change of the RGB color 227, 203, 201 by changing the saturation by 10% instead.

■ 227, 203, 201

255, 255, 255

■ 227, 203, 201

■ 199, 176, 174

■ 171, 149, 147

■ 145, 123, 121

■ 119, 98, 97

■ 94, 74, 73

■ 70, 52, 50


■ 47, 30, 29

■ 28, 6, 4


■ 0, 0, 0

 227, 203, 201


 227, 203, 201

 227, 182, 178


 227, 224, 224

 227, 161, 156

 227, 245, 246

 227, 140, 133

 227, 255, 255

 227, 119, 110

 227, 98, 88

 227, 77, 65

 227, 56, 42

 227, 35, 19

 227, 17, 0

Harmonies

Analogous

The Analogous color harmony consists of three colors that are next to each other on the color wheel.



225, 203, 210



227, 203, 201



224, 205, 194

Triad

The Triadic color harmony groups three colors that are evenly spaced from another and form a triangle on the color wheel.



227, 203, 201



197, 212, 199



199, 209, 225

Complementary

The Complementary color scheme is a pair of colors which are on the opposite of each other on the color wheel.



227, 203, 201



201, 225, 227

Split Complementary

Split-complementary colors differ from the complementary color scheme. The scheme consists of three colors, the original color and two neighbors of the complement color.



191, 212, 222



227, 203, 201



190, 213, 207

Square

The Square scheme is like the rectangle color scheme, but the four colors are evenly spaced on the color wheel.



227, 203, 201



207, 210, 193



188, 213, 216



209, 206, 223

Rectangle

The Rectangle color scheme consists of four colors that form a rectangle on the color wheel.



227, 203, 201



219, 206, 192



188, 213, 216



196, 210, 225

Sweetspot

The Sweet Spot groups the original color and five complimentary colors.



227, 203, 201



255, 248, 247



227, 201, 225



128, 123, 122



0, 0, 0



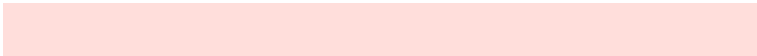
128, 128, 128

Same Dimension

The Same Dimension uses a secret algorithm to generate beautiful new colors.



227, 203, 201



255, 222, 219



227, 216, 201



115, 104, 103



179, 14, 0



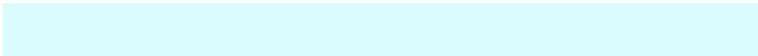
51, 4, 0

Inverse Universe

The Inverse Universe completely reimagines the original color for something new.



201, 225, 227



219, 252, 255



201, 212, 227



103, 114, 115



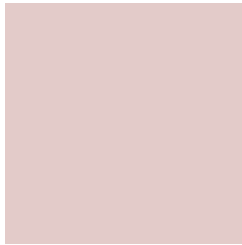
0, 165, 179



0, 47, 51

Previews

White Background



This preview shows how the RGB color 227, 203, 201 looks on a white background.

Color Contrast Check

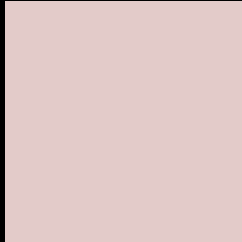
Large Text (above 18pt) WCAG AA × Fail

Any Text WCAG AA × Fail

Large Text (above 18pt) WCAG AAA × Fail

Any Text WCAG AAA × Fail

Black Background



This preview shows how the RGB color 227, 203, 201 looks on a black background.

Color Contrast Check

Large Text (above 18pt) WCAG AA ✓ Pass

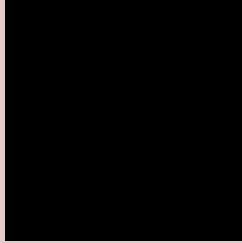
Any Text WCAG AA ✓ Pass

Large Text (above 18pt) WCAG AAA ✓ Pass

Any Text WCAG AAA ✓ Pass

If you want to check with other color combinations, try the [Color Contrast Checker](#).

RGB 227, 203, 201 Background



This preview shows how black text looks on a background with the RGB color 227, 203, 201.

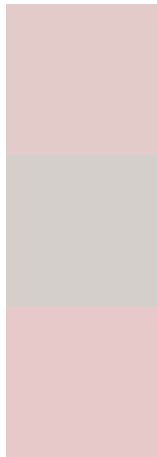


This preview shows how white text looks on a background with the RGB color 227, 203, 201.

Color Blindness Simulation

Color vision deficiency is a very complex topic, and I could not describe the different causes any better than Wikipedia does, so if you want to learn more, you should check out their [article about color blindness](#).

Dichromacy



Original Color
227, 203, 201

Protanopia
213, 207, 203

Deuteranopia
231, 201, 201



Tritanopia
229, 201, 216

Trichromacy



Original Color

227, 203, 201

Protanomaly

218, 206, 202

Deuteranomaly

230, 202, 201

Tritanomaly

228, 202, 211

Monochromacy



Original Color

227, 203, 201

Achromatopsia

210, 210, 210

Achromatomaly

216, 207, 207

CSS Examples

Text

The CSS property to change the color of the text to RGB 227, 203, 201 is called "color". The color property can be set on classes, ids or directly on the HTML element.

This example shows how text in the color `rgb(227, 203, 201)` looks like.

```
.text, #text, p{  
    color:rgb(227, 203, 201)  
}
```

If you want to add a text shadow in that color use the text-shadow property, you can generate a text shadow directly with our [CSS Text Shadow Generator](#).

Here you see how black text with a 4 pixel rgb(227, 203, 201) colored shadow looks like.

```
.shadow{ text-shadow: 4px 4px 2px rgb(227, 203, 201) }
```

Border

The CSS property to change the border of an element to RGB 227, 203, 201 is called "border". The border property can be set on classes, ids or directly on the HTML element.

This example shows the color as border, it can be applied via the CSS property "border" or "border-color".

```
.border, #border, table{ border:4px solid rgb(227, 203, 201) }
```

If only the border color should be changed use the property `border-color`.

```
.border{ border-color:rgb(227, 203, 201) }
```

If you want to add a box shadow in that color use:

Here you see how a box with a 4 pixel `rgb(227, 203, 201)` colored shadow looks like.

```
.boxshadow{ -moz-box-shadow:4px 4px 4px  
4px rgb(227, 203, 201); -webkit-box-  
shadow:4px 4px 4px 4px rgb(227, 203, 201);  
box-shadow:4px 4px 4px 4px rgb(227, 203,  
201) }
```

Background

The CSS property to change the background color of an element to RGB 227, 203, 201 is called "background". The background property can be set on classes, ids or directly on the HTML element.

```
.background, #background, body{  
background: rgb(227, 203, 201) }
```

If only the background color should be changed can be used:

```
.background{ background-color: rgb(227,  
203, 201) }
```

This example shows the color as background, it is applied via the CSS property "background".

To optimize and compress your CSS code, you can use our [online CSS compressor and optimizer](#) based on csstidy. If you want to create a linear or radial gradient as background or border, check our [CSS Gradient Generator](#).

Hey! You found this booklet interesting? Support Converting Colors with the new Membership Option!

The pro membership hides all ads, plus gives you double the colors in the color bucket, and more awesome pro features!

[Learn more, Memberships starting at \\$2.50/m!](#)

**Follow me
on Twitter!**

@ConvertingColor