

Converting Colors

RGB(227, 208, 213)

Have a look what the booklet for
RGB(227, 208, 213) contains.

RGB(227, 208, 213)	3
<i>Conversions</i>	4
<i>Details</i>	6
<i>Harmonies</i>	11
<i>Previews</i>	23
<i>Color Blindness Simulation</i>	26
<i>CSS Examples</i>	29

Color

RGB(227, 208, 213)

Conversions

Conversions Part 1

Format	Color
Hex	E3D0D5
RGB	227, 208, 213
RGB Percent	89%, 82%, 84%
CMY	0.1098, 0.1843, 0.1647
CMYK	0.00, 0.08, 0.06, 0.11
HSL	344°, 25%, 85%
HSV	344°, 8%, 89%
XYZ	66.2447, 66.2467, 72.2462
YIQ	214.2510, 9.7190, 5.5830

Conversions

Conversions Part 2

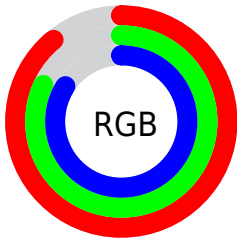
Format	Color
R _Y B	227, 208, 213
Decimal	14930133
CIE Lab	85.12, 7.44, -0.09
CIE LCh	85, 7.439, 359.288
Yxy	66.2467, 0.3236, 0.3236
Android (android.graphics.Color)	4293120213 (0xFFE3D0D5)
YUV	214.2510, -0.6167, 11.1809
Hunter-Lab	81.3921, 2.8442, 4.3468

Details

The RGB color **227, 208, 213** is a light color, and the websafe version is hex **CCCCCC**. A complement of this color would be **208, 227, 222**, and the grayscale version is **214, 214, 214**.

A 20% lighter version of the original color is 255, 255, 255, and **172, 154, 158** is the 20% darker color. If you saturate the color by 10%, you get **227, 185, 196**, and if you desaturate by 10%, it is **227, 231, 230**.

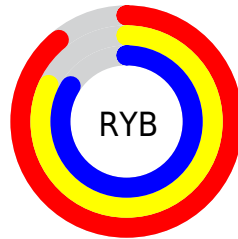
Distribution



Red (89%)

Green (82%)

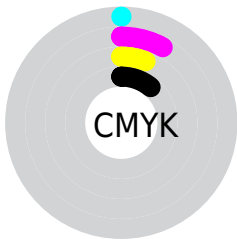
Blue (84%)



Red (89%)

Yellow (82%)

Blue (84%)

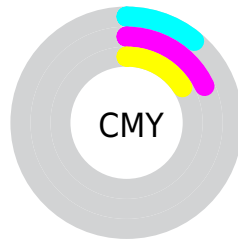


Cyan (0%)

Magenta (8%)

Yellow (6%)

Black (11%)



Cyan (11%)

Magenta (18%)

Yellow (16%)

Brightness & Saturation Gradients

These gradients show how the RGB color 227, 208, 213 changes by changing the brightness by 10 percent. The first figure shows a shift by +10% for each color and the second figure -10%.

Similar to the brightness gradients but the following saturation gradients show a change of the RGB color 227, 208, 213 by changing the saturation by 10% instead.

■ 227, 208, 213

255, 255, 255

■ 227, 208, 213

■ 199, 180, 185

■ 172, 154, 158

■ 145, 128, 132

■ 119, 103, 107

■ 94, 79, 83

■ 71, 56, 60


■ 48, 34, 38

■ 28, 13, 18

■ 0, 0, 0

 227, 208, 213

 227, 208, 213

 227, 185, 196


 227, 231, 230

 227, 163, 180

 227, 253, 246

 227, 140, 163

 227, 255, 255

 227, 117, 146

 227, 95, 129

 227, 72, 113

 227, 49, 96

 227, 26, 79

 227, 4, 62

Harmonies

Analogous

The Analogous color harmony consists of three colors that are next to each other on the color wheel.



222, 209, 220



227, 208, 213



228, 208, 206

Triad

The Triadic color harmony groups three colors that are evenly spaced from another and form a triangle on the color wheel.



227, 208, 213



211, 214, 200



199, 215, 224

Complementary

The Complementary color scheme is a pair of colors which are on the opposite of each other on the color wheel.



227, 208, 213



208, 227, 222

Split Complementary

Split-complementary colors differ from the complementary color scheme. The scheme consists of three colors, the original color and two neighbors of the complement color.



196, 217, 219



227, 208, 213



203, 216, 205

Square

The Square scheme is like the rectangle color scheme, but the four colors are evenly spaced on the color wheel.



227, 208, 213



219, 212, 199



197, 217, 212



205, 213, 226

Rectangle

The Rectangle color scheme consists of four colors that form a rectangle on the color wheel.



227, 208, 213



227, 209, 202



197, 217, 212



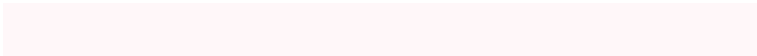
197, 216, 223

Sweetspot

The Sweet Spot groups the original color and five complimentary colors.



227, 208, 213



255, 247, 249



222, 208, 227



128, 122, 124



0, 0, 0



128, 128, 128

Same Dimension

The Same Dimension uses a secret algorithm to generate beautiful new colors.



227, 208, 213



255, 230, 236



227, 212, 208



115, 103, 106



179, 0, 47



51, 0, 13

Inverse Universe

The Inverse Universe completely reimagines the original color for something new.



227, 208, 213



255, 230, 236



208, 223, 227



115, 103, 106



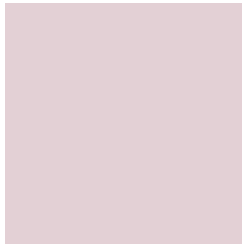
179, 0, 47



51, 0, 13

Previews

White Background



This preview shows how the RGB color 227, 208, 213 looks on a white background.

Color Contrast Check

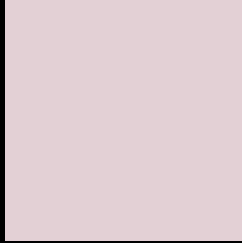
Large Text (above 18pt) WCAG AA × Fail

Any Text WCAG AA × Fail

Large Text (above 18pt) WCAG AAA × Fail

Any Text WCAG AAA × Fail

Black Background



This preview shows how the RGB color 227, 208, 213 looks on a black background.

Color Contrast Check

Large Text (above 18pt) WCAG AA ✓ Pass

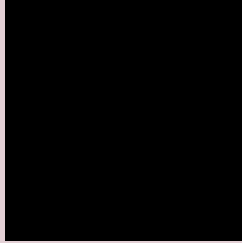
Any Text WCAG AA ✓ Pass

Large Text (above 18pt) WCAG AAA ✓ Pass

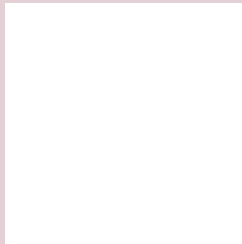
Any Text WCAG AAA ✓ Pass

If you want to check with other color combinations, try the [Color Contrast Checker](#).

RGB 227, 208, 213 Background



This preview shows how black text looks on a background with the RGB color 227, 208, 213.

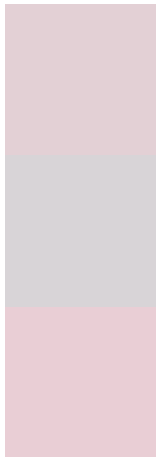


This preview shows how white text looks on a background with the RGB color 227, 208, 213.

Color Blindness Simulation

Color vision deficiency is a very complex topic, and I could not describe the different causes any better than Wikipedia does, so if you want to learn more, you should check out their [article about color blindness](#).

Dichromacy



Original Color
227, 208, 213

Protanopia
216, 212, 215

Deuteranopia
233, 206, 213



Tritanopia
228, 206, 223

Trichromacy



Original Color

227, 208, 213

Protanomaly

220, 211, 214

Deuteranomaly

231, 207, 213

Tritanomaly

228, 207, 219

Monochromacy



Original Color

227, 208, 213

Achromatopsia

214, 214, 214

Achromatomaly

219, 212, 214

CSS Examples

Text

The CSS property to change the color of the text to RGB 227, 208, 213 is called "color". The color property can be set on classes, ids or directly on the HTML element.

This example shows how text in the color `rgb(227, 208, 213)` looks like.

```
.text, #text, p{  
    color:rgb(227, 208, 213)  
}
```

If you want to add a text shadow in that color use the text-shadow property, you can generate a text shadow directly with our [CSS Text Shadow Generator](#).

Here you see how black text with a 4 pixel rgb(227, 208, 213) colored shadow looks like.

```
.shadow{ text-shadow: 4px 4px 2px rgb(227, 208, 213) }
```

Border

The CSS property to change the border of an element to RGB 227, 208, 213 is called "border". The border property can be set on classes, ids or directly on the HTML element.

This example shows the color as border, it can be applied via the CSS property "border" or "border-color".

```
.border, #border, table{ border:4px solid rgb(227, 208, 213) }
```

If only the border color should be changed use the property `border-color`.

```
.border{ border-color:rgb(227, 208, 213) }
```

If you want to add a box shadow in that color use:

Here you see how a box with a 4 pixel `rgb(227, 208, 213)` colored shadow looks like.

```
.boxshadow{ -moz-box-shadow:4px 4px 4px  
4px rgb(227, 208, 213); -webkit-box-  
shadow:4px 4px 4px 4px rgb(227, 208, 213);  
box-shadow:4px 4px 4px 4px rgb(227, 208,  
213) }
```

Background

The CSS property to change the background color of an element to RGB 227, 208, 213 is called "background". The background property can be set on classes, ids or directly on the HTML element.

```
.background, #background, body{  
background: rgb(227, 208, 213) }
```

If only the background color should be changed can be used:

```
.background{ background-color: rgb(227,  
208, 213) }
```

This example shows the color as background, it is applied via the CSS property "background".

To optimize and compress your CSS code, you can use our [online CSS compressor and optimizer](#) based on csstidy. If you want to create a linear or radial gradient as background or border, check our [CSS Gradient Generator](#).

Hey! You found this booklet interesting? Support Converting Colors with the new Membership Option!

The pro membership hides all ads, plus gives you double the colors in the color bucket, and more awesome pro features!

[Learn more, Memberships starting at \\$2.50/m!](#)

**Follow me
on Twitter!**

@ConvertingColor