

Converting Colors

RGB(227, 66, 106)

Have a look what the booklet for
RGB(227, 66, 106) contains.

RGB(227, 66, 106)	3
<i>Conversions</i>	4
<i>Details</i>	6
<i>Harmonies</i>	11
<i>Previews</i>	23
<i>Color Blindness Simulation</i>	26
<i>CSS Examples</i>	29

Color

RGB(227, 66, 106)

Conversions

Conversions Part 1

Format	Color
Hex	E3426A
RGB	227, 66, 106
RGB Percent	89%, 26%, 42%
CMY	0.1098, 0.7412, 0.5843
CMYK	0.00, 0.71, 0.53, 0.11
HSL	345°, 74%, 57%
HSV	345°, 71%, 89%
XYZ	36.2283, 21.2679, 15.8313
YIQ	118.6990, 83.1160, 46.5720

Conversions

Conversions Part 2

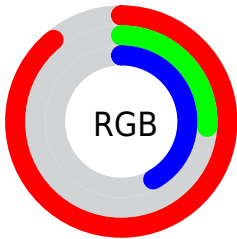
Format	Color
R_{YB}	227, 66, 106
Decimal	14893674
CIE _{Lab}	53.24, 64.07, 14.21
CIE _{LCh}	53, 65.630, 12.508
Yxy	21.2679, 0.4941, 0.2900
Android (android.graphics.Color)	4293083754 (0xFFE3426A)
YUV	118.6990, -6.2606, 94.9800
Hunter-Lab	46.1172, 59.5193, 11.9286

Details

The RGB color **227, 66, 106** is a dark color, and the websafe version is hex **CC3366**. The color can be described as middle muted rose. A complement of this color would be **66, 227, 187**, and the grayscale version is **119, 119, 119**.

A 20% lighter version of the original color is **255, 125, 157**, and **165, 0, 59** is the 20% darker color. If you saturate the color by 10%, you get **227, 43, 89**, and if you desaturate by 10%, it is **227, 89, 123**.

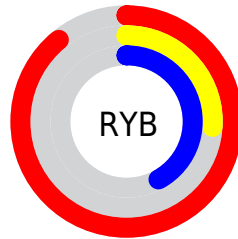
Distribution



Red (89%)

Green (26%)

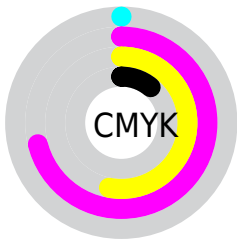
Blue (42%)



Red (89%)

Yellow (26%)

Blue (42%)

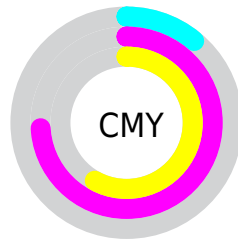


Cyan (0%)

Magenta (71%)

Yellow (53%)

Black (11%)



Cyan (11%)

Magenta (74%)

Yellow (58%)

Brightness & Saturation Gradients

These gradients show how the RGB color 227, 66, 106 changes by changing the brightness by 10 percent. The first figure shows a shift by +10% for each color and the second figure -10%.

Similar to the brightness gradients but the following saturation gradients show a change of the RGB color 227, 66, 106 by changing the saturation by 10% instead.

 227, 66, 106

 227, 66, 106

255, 255, 255

 196, 31, 82

 255, 125, 157

 165, 0, 59

 255, 153, 184

 135, 0, 38

 255, 182, 211

 105, 0, 18

 255, 211, 240

 76, 0, 2

 255, 241, 255

 46, 0, 2

 0, 0, 0

 227, 66, 106

 227, 66, 106

 227, 43, 89

 227, 89, 123

■ 227, 21, 72

■ 227, 111, 140

■ 227, 0, 56

■ 227, 134, 157

■ 227, 157, 174

■ 227, 179, 191

■ 227, 202, 208

■ 227, 225, 225

■ 227, 248, 242

■ 227, 255, 255

Harmonies

Analogous

The Analogous color harmony consists of three colors that are next to each other on the color wheel.



211, 73, 163



227, 66, 106



214, 86, 53

Triad

The Triadic color harmony groups three colors that are evenly spaced from another and form a triangle on the color wheel.



227, 66, 106



65, 144, 33



0, 143, 235

Complementary

The Complementary color scheme is a pair of colors which are on the opposite of each other on the color wheel.



227, 66, 106



66, 227, 187

Split Complementary

Split-complementary colors differ from the complementary color scheme. The scheme consists of three colors, the original color and two neighbors of the complement color.



0, 151, 203



227, 66, 106



0, 151, 91

Square

The Square scheme is like the rectangle color scheme, but the four colors are evenly spaced on the color wheel.



227, 66, 106



131, 132, 0



0, 153, 150



21, 126, 238

Rectangle

The Rectangle color scheme consists of four colors that form a rectangle on the color wheel.



227, 66, 106



193, 104, 14



0, 153, 150



0, 146, 227

Sweetspot

The Sweet Spot groups the original color and five complimentary colors.



227, 66, 106



255, 201, 215



187, 66, 227



128, 96, 104



0, 0, 0



128, 128, 128

Same Dimension

The Same Dimension uses a secret algorithm to generate beautiful new colors.



227, 66, 106



255, 38, 92



227, 106, 66



115, 103, 106



179, 0, 44



51, 0, 13

Inverse Universe

The Inverse Universe completely reimagines the original color for something new.



227, 66, 106



255, 38, 92



66, 187, 227



115, 103, 106



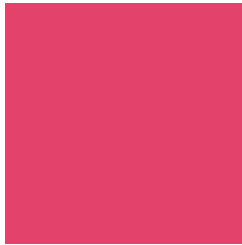
179, 0, 44



51, 0, 13

Previews

White Background



This preview shows how the RGB color 227, 66, 106 looks on a white background.

Color Contrast Check

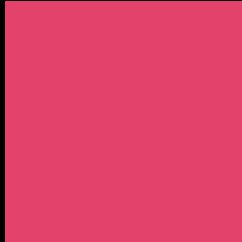
Large Text (above 18pt) WCAG AA ✓ Pass

Any Text WCAG AA ✗ Fail

Large Text (above 18pt) WCAG AAA ✗ Fail

Any Text WCAG AAA ✗ Fail

Black Background



This preview shows how the RGB color 227, 66, 106 looks on a black background.

Color Contrast Check

Large Text (above 18pt) WCAG AA ✓ Pass

Any Text WCAG AA ✓ Pass

Large Text (above 18pt) WCAG AAA ✓ Pass

Any Text WCAG AAA × Fail

If you want to check with other color combinations, try the [Color Contrast Checker](#).

RGB 227, 66, 106 Background



This preview shows how black text looks on a background with the RGB color 227, 66, 106.



This preview shows how white text looks on a background with the RGB color 227, 66, 106.

Color Blindness Simulation

Color vision deficiency is a very complex topic, and I could not describe the different causes any better than Wikipedia does, so if you want to learn more, you should check out their [article about color blindness](#).

Dichromacy



Original Color
227, 66, 106

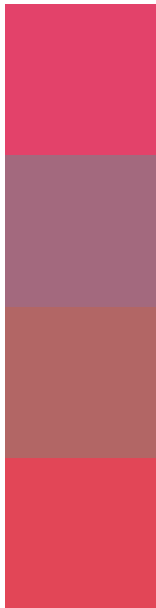
Protanopia
127, 127, 137

Deuteranopia
150, 122, 98



Tritanopia
225, 72, 76

Trichromacy



Original Color

227, 66, 106

Protanomaly

163, 105, 126

Deuteranomaly

178, 102, 101

Tritanomaly

226, 70, 87

Monochromacy



Original Color

227, 66, 106

Achromatopsia

119, 119, 119

Achromatomaly

158, 100, 114

CSS Examples

Text

The CSS property to change the color of the text to RGB 227, 66, 106 is called "color". The color property can be set on classes, ids or directly on the HTML element.

This example shows how text in the color `rgb(227, 66, 106)` looks like.

```
.text, #text, p{  
    color:rgb(227, 66, 106)  
}
```

If you want to add a text shadow in that color use the text-shadow property, you can generate a text shadow directly with our [CSS Text Shadow Generator](#).

Here you see how black text with a 4 pixel rgb(227, 66, 106) colored shadow looks like.

```
.shadow{ text-shadow: 4px 4px 2px rgb(227, 66, 106) }
```

Border

The CSS property to change the border of an element to RGB 227, 66, 106 is called "border". The border property can be set on classes, ids or directly on the HTML element.

This example shows the color as border, it can be applied via the CSS property "border" or "border-color".

```
.border, #border, table{ border:4px solid rgb(227, 66, 106) }
```

If only the border color should be changed use the property border-color.

```
.border{ border-color:rgb(227, 66, 106) }
```

If you want to add a box shadow in that color use:

Here you see how a box with a 4 pixel rgb(227, 66, 106) colored shadow looks like.

```
.boxshadow{ -moz-box-shadow:4px 4px 4px  
4px rgb(227, 66, 106); -webkit-box-  
shadow:4px 4px 4px 4px rgb(227, 66, 106);  
box-shadow:4px 4px 4px 4px rgb(227, 66,  
106) }
```

Background

The CSS property to change the background color of an element to RGB 227, 66, 106 is called "background". The background property can be set on classes, ids or directly on the HTML element.

```
.background, #background, body{  
background: rgb(227, 66, 106) }
```

If only the background color should be changed can be used:

```
.background{ background-color: rgb(227, 66,  
106) }
```

This example shows the color as background, it is applied via the CSS property "background".

To optimize and compress your CSS code, you can use our [online CSS compressor and optimizer](#) based on csstidy. If you want to create a linear or radial gradient as background or border, check our [CSS Gradient Generator](#).

Hey! You found this booklet interesting? Support Converting Colors with the new Membership Option!

The pro membership hides all ads, plus gives you double the colors in the color bucket, and more awesome pro features!

[Learn more, Memberships starting at \\$2.50/m!](#)

**Follow me
on Twitter!**

@ConvertingColor