

Converting Colors

RGB(228, 116, 134)

Have a look what the booklet for
RGB(228, 116, 134) contains.

RGB(228, 116, 134)	3
<i>Conversions</i>	4
<i>Details</i>	6
<i>Harmonies</i>	11
<i>Previews</i>	23
<i>Color Blindness Simulation</i>	26
<i>CSS Examples</i>	29

Color

RGB(228, 116, 134)

Conversions

Conversions Part 1

Format	Color
Hex	E47486
RGB	228, 116, 134
RGB Percent	89%, 45%, 53%
CMY	0.1059, 0.5451, 0.4745
CMYK	0.00, 0.49, 0.41, 0.11
HSL	350°, 67%, 67%
HSV	350°, 49%, 89%
XYZ	42.5434, 30.7060, 26.2388
YIQ	151.5400, 60.9740, 29.3420

Conversions

Conversions Part 2

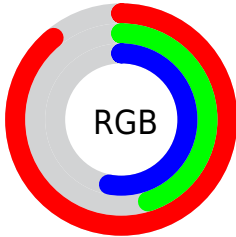
Format	Color
R _Y B	228, 116, 134
Decimal	14972038
CIE Lab	62.26, 45.15, 10.47
CIE LCh	62, 46.350, 13.056
Yxy	30.7060, 0.4276, 0.3086
Android (android.graphics.Color)	4293162118 (0xFFE47486)
YUV	151.5400, -8.6472, 67.0554
Hunter-Lab	55.4130, 40.0708, 10.7144

Details

The RGB color **228, 116, 134** is a light color, and the websafe version is hex **CC6666**. A complement of this color would be **116, 228, 210**, and the grayscale version is **152, 152, 152**.

A 20% lighter version of the original color is **255, 170, 187**, and **169, 63, 85** is the 20% darker color. If you saturate the color by 10%, you get **228, 93, 115**, and if you desaturate by 10%, it is **228, 139, 153**.

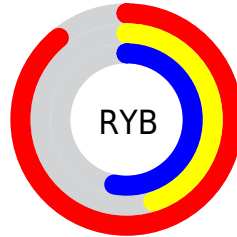
Distribution



Red (89%)

Green (45%)

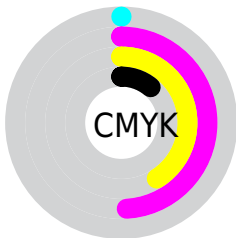
Blue (53%)



Red (89%)

Yellow (45%)

Blue (53%)

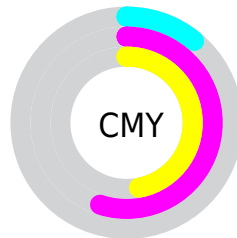


Cyan (0%)

Magenta (49%)

Yellow (41%)

Black (11%)



Cyan (11%)

Magenta (55%)

Yellow (47%)

Brightness & Saturation Gradients

These gradients show how the RGB color 228, 116, 134 changes by changing the brightness by 10 percent. The first figure shows a shift by +10% for each color and the second figure -10%.

Similar to the brightness gradients but the following saturation gradients show a change of the RGB color 228, 116, 134 by changing the saturation by 10% instead.

 228, 116, 134

255, 255, 255

 255, 170, 187

 255, 199, 215

 255, 227, 243

 228, 116, 134

 198, 90, 109

 169, 63, 85

 140, 36, 62

 112, 0, 40

 84, 0, 20

 58, 0, 1

 24, 0, 1

 0, 0, 0

 228, 116, 134

 228, 116, 134

 228, 93, 115

 228, 139, 153

 228, 70, 96

 228, 162, 172

 228, 48, 77

 228, 184, 191

 228, 25, 57

 228, 207, 211

 228, 2, 38

 228, 230, 230

 228, 0, 37

 228, 253, 249

 228, 255, 255

Harmonies

Analogous

The Analogous color harmony consists of three colors that are next to each other on the color wheel.



214, 119, 176



228, 116, 134



220, 125, 96

Triad

The Triadic color harmony groups three colors that are evenly spaced from another and form a triangle on the color wheel.



228, 116, 134



112, 164, 88



0, 161, 229

Complementary

The Complementary color scheme is a pair of colors which are on the opposite of each other on the color wheel.



228, 116, 134



116, 228, 210

Split Complementary

Split-complementary colors differ from the complementary color scheme. The scheme consists of three colors, the original color and two neighbors of the complement color.



0, 169, 206



228, 116, 134



45, 170, 125

Square

The Square scheme is like the rectangle color scheme, but the four colors are evenly spaced on the color wheel.



228, 116, 134



157, 154, 67



0, 171, 168



114, 149, 231

Rectangle

The Rectangle color scheme consists of four colors that form a rectangle on the color wheel.



228, 116, 134



204, 135, 77



0, 171, 168



0, 164, 223

Sweetspot

The Sweet Spot groups the original color and five complimentary colors.



228, 116, 134



255, 217, 223



209, 116, 228



128, 105, 108



0, 0, 0



128, 128, 128

Same Dimension

The Same Dimension uses a secret algorithm to generate beautiful new colors.



228, 116, 134



255, 105, 129



228, 153, 116



115, 103, 105



179, 0, 29



51, 0, 8

Inverse Universe

The Inverse Universe completely reimagines the original color for something new.



228, 116, 134



255, 105, 129



116, 191, 228



115, 103, 105



179, 0, 29



51, 0, 8

Previews

White Background



This preview shows how the RGB color 228, 116, 134 looks on a white background.

Color Contrast Check

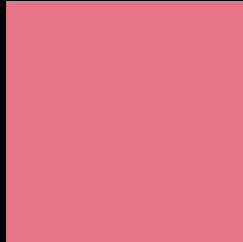
Large Text (above 18pt) WCAG AA × Fail

Any Text WCAG AA × Fail

Large Text (above 18pt) WCAG AAA × Fail

Any Text WCAG AAA × Fail

Black Background



This preview shows how the RGB color 228, 116, 134 looks on a black background.

Color Contrast Check

Large Text (above 18pt) WCAG AA ✓ Pass

Any Text WCAG AA ✓ Pass

Large Text (above 18pt) WCAG AAA ✓ Pass

Any Text WCAG AAA ✓ Pass

If you want to check with other color combinations, try the [Color Contrast Checker](#).

RGB 228, 116, 134 Background



This preview shows how black text looks on a background with the RGB color 228, 116, 134.

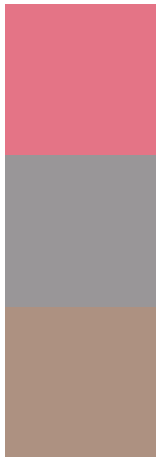


This preview shows how white text looks on a background with the RGB color 228, 116, 134.

Color Blindness Simulation

Color vision deficiency is a very complex topic, and I could not describe the different causes any better than Wikipedia does, so if you want to learn more, you should check out their [article about color blindness](#).

Dichromacy



Original Color
228, 116, 134

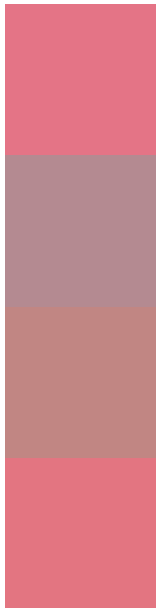
Protanopia
153, 150, 152

Deuteranopia
173, 145, 129



Tritanopia
227, 117, 126

Trichromacy



Original Color
228, 116, 134

Protanomaly
180, 138, 145

Deuteranomaly
193, 134, 131

Tritanomaly
227, 117, 129

Monochromacy



Original Color
228, 116, 134

Achromatopsia
152, 152, 152

Achromatomaly
180, 139, 145

CSS Examples

Text

The CSS property to change the color of the text to RGB 228, 116, 134 is called "color". The color property can be set on classes, ids or directly on the HTML element.

This example shows how text in the color `rgb(228, 116, 134)` looks like.

```
.text, #text, p{  
    color:rgb(228, 116, 134)  
}
```

If you want to add a text shadow in that color use the text-shadow property, you can generate a text shadow directly with our [CSS Text Shadow Generator](#).

Here you see how black text with a 4 pixel rgb(228, 116, 134) colored shadow looks like.

```
.shadow{ text-shadow: 4px 4px 2px rgb(228, 116, 134) }
```

Border

The CSS property to change the border of an element to RGB 228, 116, 134 is called "border". The border property can be set on classes, ids or directly on the HTML element.

This example shows the color as border, it can be applied via the CSS property "border" or "border-color".

```
.border, #border, table{ border:4px solid rgb(228, 116, 134) }
```

If only the border color should be changed use the property `border-color`.

```
.border{ border-color:rgb(228, 116, 134) }
```

If you want to add a box shadow in that color use:

Here you see how a box with a 4 pixel `rgb(228, 116, 134)` colored shadow looks like.

```
.boxshadow{ -moz-box-shadow:4px 4px 4px 4px rgb(228, 116, 134); -webkit-box-shadow:4px 4px 4px 4px rgb(228, 116, 134); box-shadow:4px 4px 4px 4px rgb(228, 116, 134) }
```

Background

The CSS property to change the background color of an element to RGB 228, 116, 134 is called "background". The background property can be set on classes, ids or directly on the HTML element.

```
.background, #background, body{  
background: rgb(228, 116, 134) }
```

If only the background color should be changed can be used:

```
.background{ background-color: rgb(228,  
116, 134) }
```

This example shows the color as background, it is applied via the CSS property "background".

To optimize and compress your CSS code, you can use our [online CSS compressor and optimizer](#) based on csstidy. If you want to create a linear or radial gradient as background or border, check our [CSS Gradient Generator](#).

Hey! You found this booklet interesting? Support Converting Colors with the new Membership Option!

The pro membership hides all ads, plus gives you double the colors in the color bucket, and more awesome pro features!

[Learn more, Memberships starting at \\$2.50/m!](#)

**Follow me
on Twitter!**

@ConvertingColor