

Converting Colors

RGB(228, 129, 156)

Have a look what the booklet for
RGB(228, 129, 156) contains.

RGB(228, 129, 156)	3
<i>Conversions</i>	4
<i>Details</i>	6
<i>Harmonies</i>	11
<i>Previews</i>	23
<i>Color Blindness Simulation</i>	26
<i>CSS Examples</i>	29

Color

RGB(228, 129, 156)

Conversions

Conversions Part 1

Format	Color
Hex	E4819C
RGB	228, 129, 156
RGB Percent	89%, 51%, 61%
CMY	0.1059, 0.4941, 0.3882
CMYK	0.00, 0.43, 0.32, 0.11
HSL	344°, 65%, 70%
HSV	344°, 43%, 89%
XYZ	45.8459, 34.5948, 35.7136
YIQ	161.6790, 50.3370, 29.3850

Conversions

Conversions Part 2

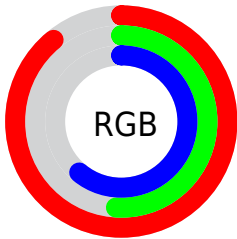
Format	Color
RYB	228, 129, 156
Decimal	14975388
CIELab	65.43, 41.12, 2.47
CIELCh	65, 41.199, 3.439
Yxy	34.5948, 0.3947, 0.2978
Android (android.graphics.Color)	4293165468 (0xFFE4819C)
YUV	161.6790, -2.7997, 58.1635
Hunter-Lab	58.8173, 36.2037, 5.1715

Details

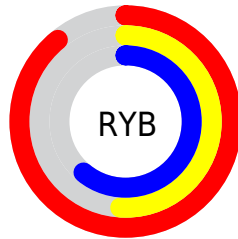
The RGB color **228, 129, 156** is a light color, and the websafe version is hex **CC6699**. A complement of this color would be **129, 228, 201**, and the grayscale version is **162, 162, 162**.

A 20% lighter version of the original color is **255, 184, 210**, and **170, 77, 105** is the 20% darker color. If you saturate the color by 10%, you get **228, 106, 139**, and if you desaturate by 10%, it is **228, 152, 173**.

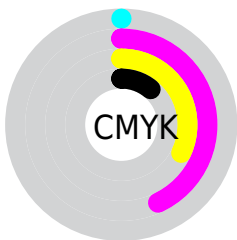
Distribution



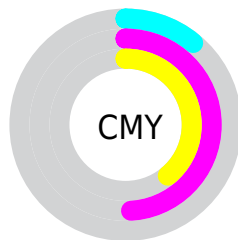
- Red (89%)
- Green (51%)
- Blue (61%)



- Red (89%)
- Yellow (51%)
- Blue (61%)



- Cyan (0%)
- Magenta (43%)
- Yellow (32%)
- Black (11%)



- Cyan (11%)
- Magenta (49%)
- Yellow (39%)

Brightness & Saturation Gradients

These gradients show how the RGB color 228, 129, 156 changes by changing the brightness by 10 percent. The first figure shows a shift by +10% for each color and the second figure -10%.

Similar to the brightness gradients but the following saturation gradients show a change of the RGB color 228, 129, 156 by changing the saturation by 10% instead.

 228, 129, 156

255, 255, 255


 255, 184, 210

 255, 212, 239

 255, 241, 255

 228, 129, 156

 199, 103, 130

 170, 77, 105

 142, 51, 81

 114, 24, 58

 87, 0, 37

 61, 0, 15

 35, 0, 1

 0, 0, 0

 228, 129, 156

 228, 129, 156

■ 228, 106, 139

■ 228, 152, 173

■ 228, 83, 123

■ 228, 175, 189

■ 228, 61, 106

■ 228, 197, 206

■ 228, 38, 90

■ 228, 220, 222

■ 228, 15, 73

■ 228, 243, 239

■ 228, 0, 62

■ 228, 255, 255

Harmonies

Analogous

The Analogous color harmony consists of three colors that are next to each other on the color wheel.



208, 135, 193



228, 129, 156



227, 133, 120

Triad

The Triadic color harmony groups three colors that are evenly spaced from another and form a triangle on the color wheel.



228, 129, 156



139, 169, 96



0, 171, 224

Complementary

The Complementary color scheme is a pair of colors which are on the opposite of each other on the color wheel.



228, 129, 156



129, 228, 201

Split Complementary

Split-complementary colors differ from the complementary color scheme. The scheme consists of three colors, the original color and two neighbors of the complement color.



0, 177, 198



228, 129, 156



93, 175, 125

Square

The Square scheme is like the rectangle color scheme, but the four colors are evenly spaced on the color wheel.



228, 129, 156



178, 158, 84



11, 178, 162



108, 161, 232

Rectangle

The Rectangle color scheme consists of four colors that form a rectangle on the color wheel.



228, 129, 156



216, 141, 101



11, 178, 162



0, 174, 217

Sweetspot

The Sweet Spot groups the original color and five complimentary colors.



228, 129, 156



255, 222, 231



200, 129, 228



128, 107, 113



0, 0, 0



128, 128, 128

Same Dimension

The Same Dimension uses a secret algorithm to generate beautiful new colors.



228, 129, 156



255, 122, 159



228, 150, 129



115, 103, 106



179, 0, 49



51, 0, 14

Inverse Universe

The Inverse Universe completely reimagines the original color for something new.



228, 129, 156



255, 122, 159



129, 207, 228



115, 103, 106



179, 0, 49



51, 0, 14

Previews

White Background



This preview shows how the RGB color 228, 129, 156 looks on a white background.

Color Contrast Check

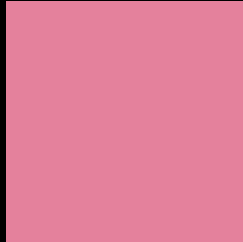
Large Text (above 18pt) WCAG AA × Fail

Any Text WCAG AA × Fail

Large Text (above 18pt) WCAG AAA × Fail

Any Text WCAG AAA × Fail

Black Background



This preview shows how the RGB color 228, 129, 156 looks on a black background.

Color Contrast Check

Large Text (above 18pt) WCAG AA ✓ Pass

Any Text WCAG AA ✓ Pass

Large Text (above 18pt) WCAG AAA ✓ Pass

Any Text WCAG AAA ✓ Pass

If you want to check with other color combinations, try the [Color Contrast Checker](#).

RGB 228, 129, 156 Background



This preview shows how black text looks on a background with the RGB color 228, 129, 156.

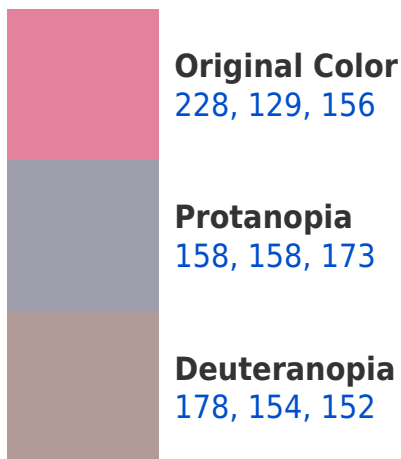


This preview shows how white text looks on a background with the RGB color 228, 129, 156.

Color Blindness Simulation

Color vision deficiency is a very complex topic, and I could not describe the different causes any better than Wikipedia does, so if you want to learn more, you should check out their [article about color blindness](#).

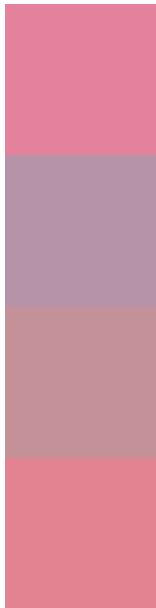
Dichromacy





Tritanopia
227, 132, 141

Trichromacy



Original Color

228, 129, 156

Protanomaly

183, 147, 167

Deuteranomaly

196, 145, 153

Tritanomaly

227, 131, 146

Monochromacy



Original Color

228, 129, 156

Achromatopsia

162, 162, 162

Achromatomaly

186, 150, 160

CSS Examples

Text

The CSS property to change the color of the text to RGB 228, 129, 156 is called "color". The color property can be set on classes, ids or directly on the HTML element.

This example shows how text in the color `rgb(228, 129, 156)` looks like.

```
.text, #text, p{  
    color:rgb(228, 129, 156)  
}
```

If you want to add a text shadow in that color use the text-shadow property, you can generate a text shadow directly with our [CSS Text Shadow Generator](#).

Here you see how black text with a 4 pixel rgb(228, 129, 156) colored shadow looks like.

```
.shadow{ text-shadow: 4px 4px 2px rgb(228, 129, 156) }
```

Border

The CSS property to change the border of an element to RGB 228, 129, 156 is called "border". The border property can be set on classes, ids or directly on the HTML element.

This example shows the color as border, it can be applied via the CSS property "border" or "border-color".

```
.border, #border, table{ border:4px solid rgb(228, 129, 156) }
```

If only the border color should be changed use the property `border-color`.

```
.border{ border-color:rgb(228, 129, 156) }
```

If you want to add a box shadow in that color use:

Here you see how a box with a 4 pixel `rgb(228, 129, 156)` colored shadow looks like.

```
.boxshadow{ -moz-box-shadow:4px 4px 4px  
4px rgb(228, 129, 156); -webkit-box-  
shadow:4px 4px 4px 4px rgb(228, 129, 156);  
box-shadow:4px 4px 4px 4px rgb(228, 129,  
156) }
```

Background

The CSS property to change the background color of an element to RGB 228, 129, 156 is called "background". The background property can be set on classes, ids or directly on the HTML element.

```
.background, #background, body{  
background: rgb(228, 129, 156) }
```

If only the background color should be changed can be used:

```
.background{ background-color: rgb(228,  
129, 156) }
```

This example shows the color as background, it is applied via the CSS property "background".

To optimize and compress your CSS code, you can use our [online CSS compressor and optimizer](#) based on csstidy. If you want to create a linear or radial gradient as background or border, check our [CSS Gradient Generator](#).

Hey! You found this booklet interesting? Support Converting Colors with the new Membership Option!

The pro membership hides all ads, plus gives you double the colors in the color bucket, and more awesome pro features!

[Learn more, Memberships starting at \\$2.50/m!](#)

**Follow me
on Twitter!**

@ConvertingColor