

# Converting Colors

RGB(228, 148, 160)

Have a look what the booklet for  
RGB(228, 148, 160) contains.

<b>RGB(228, 148, 160)</b> .....	3
<i><b>Conversions</b></i> .....	4
<i><b>Details</b></i> .....	6
<i><b>Harmonies</b></i> .....	11
<i><b>Previews</b></i> .....	23
<i><b>Color Blindness Simulation</b></i> .....	26
<i><b>CSS Examples</b></i> .....	29

# **Color**

**RGB(228, 148, 160)**

# Conversions

## Conversions Part 1

Format	Color
Hex	E494A0
RGB	228, 148, 160
RGB Percent	89%, 58%, 63%
CMY	0.1059, 0.4196, 0.3725
CMYK	0.00, 0.35, 0.30, 0.11
HSL	351°, 60%, 74%
HSV	351°, 35%, 89%
XYZ	48.9300, 40.2119, 38.4405
YIQ	173.2880, 43.8280, 20.6920

# Conversions

## Conversions Part 2

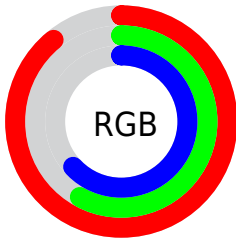
<b>Format</b>	<b>Color</b>
R <sub>Y</sub> B	228, 148, 160
Decimal	14980256
CIE Lab	69.62, 31.67, 6.27
CIE LCh	70, 32.289, 11.193
Yxy	40.2119, 0.3835, 0.3152
Android (android.graphics.Color)	4293170336 (0xFFE494A0)
YUV	173.2880, -6.5510, 47.9824
Hunter-Lab	63.4128, 26.7600, 8.4477

# Details

The RGB color **228, 148, 160** is a light color, and the websafe version is hex **FF9999**. A complement of this color would be **148, 228, 216**, and the grayscale version is **173, 173, 173**.

A 20% lighter version of the original color is **255, 203, 215**, and **171, 96, 109** is the 20% darker color. If you saturate the color by 10%, you get **228, 125, 141**, and if you desaturate by 10%, it is **228, 171, 179**.

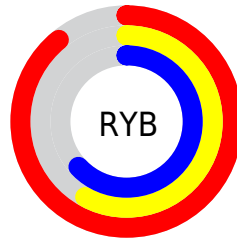
# Distribution



Red (89%)

Green (58%)

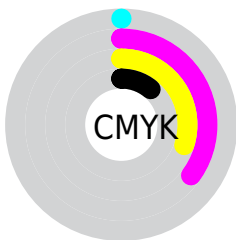
Blue (63%)



Red (89%)

Yellow (58%)

Blue (63%)

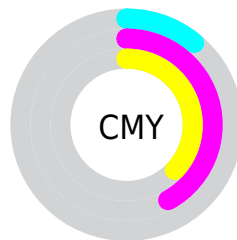


Cyan (0%)

Magenta (35%)

Yellow (30%)

Black (11%)



Cyan (11%)

Magenta (42%)

Yellow (37%)

# Brightness & Saturation Gradients

These gradients show how the RGB color 228, 148, 160 changes by changing the brightness by 10 percent. The first figure shows a shift by +10% for each color and the second figure -10%.

Similar to the brightness gradients but the following saturation gradients show a change of the RGB color 228, 148, 160 by changing the saturation by 10% instead.




 228, 148, 160

 228, 148, 160

255, 255, 255

 199, 122, 134


 255, 203, 215

 171, 96, 109

 255, 231, 243

 143, 71, 84

 116, 47, 61

 89, 23, 40

 64, 0, 19

 43, 0, 1

 0, 0, 0

 228, 148, 160

 228, 148, 160

■ 228, 125, 141

■ 228, 171, 179

■ 228, 102, 121

■ 228, 194, 199

■ 228, 80, 102

■ 228, 216, 218

■ 228, 57, 82

■ 228, 239, 238

■ 228, 34, 63

■ 228, 255, 255

■ 228, 11, 44

■ 228, 0, 34

# Harmonies

## Analogous

The Analogous color harmony consists of three colors that are next to each other on the color wheel.



216, 150, 190



228, 148, 160



224, 153, 133

# Triad

The Triadic color harmony groups three colors that are evenly spaced from another and form a triangle on the color wheel.



228, 148, 160



147, 180, 125



103, 178, 225

# Complementary

The Complementary color scheme is a pair of colors which are on the opposite of each other on the color wheel.



228, 148, 160



148, 228, 216

# Split Complementary

Split-complementary colors differ from the complementary color scheme. The scheme consists of three colors, the original color and two neighbors of the complement color.



72, 184, 208



228, 148, 160



112, 185, 150

# Square

The Square scheme is like the rectangle color scheme, but the four colors are evenly spaced on the color wheel.



228, 148, 160



179, 172, 112



80, 186, 180



147, 169, 227

# Rectangle

The Rectangle color scheme consists of four colors that form a rectangle on the color wheel.



228, 148, 160



213, 159, 120



80, 186, 180



89, 181, 221

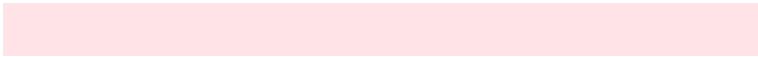


# Sweetspot

The Sweet Spot groups the original color and five complimentary colors.



228, 148, 160



255, 227, 231



216, 148, 228



128, 111, 113



0, 0, 0



128, 128, 128



# Same Dimension

The Same Dimension uses a secret algorithm to generate beautiful new colors.



228, 148, 160



255, 148, 164



228, 176, 148



115, 103, 105



179, 0, 27



51, 0, 8



# Inverse Universe

The Inverse Universe completely reimagines the original color for something new.



228, 148, 160



255, 148, 164



148, 200, 228



115, 103, 105



179, 0, 27



51, 0, 8



# Previews

## White Background



This preview shows how the RGB color 228, 148, 160 looks on a white background.

## Color Contrast Check

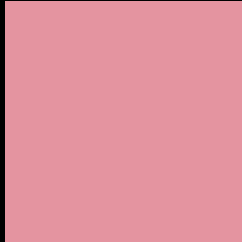
Large Text (above 18pt) WCAG AA × Fail

Any Text WCAG AA × Fail

Large Text (above 18pt) WCAG AAA × Fail

Any Text WCAG AAA × Fail

# Black Background



This preview shows how the RGB color 228, 148, 160 looks on a black background.

## Color Contrast Check

Large Text (above 18pt) WCAG AA ✓ Pass

Any Text WCAG AA ✓ Pass

Large Text (above 18pt) WCAG AAA ✓ Pass

Any Text WCAG AAA ✓ Pass

If you want to check with other color combinations, try the [Color Contrast Checker](#).



## RGB 228, 148, 160 Background



This preview shows how black text looks on a background with the RGB color 228, 148, 160.

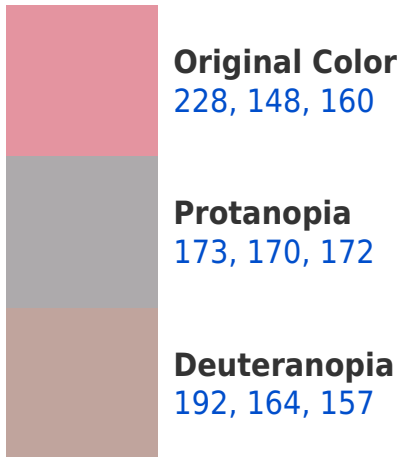


This preview shows how white text looks on a background with the RGB color 228, 148, 160.

# Color Blindness Simulation

Color vision deficiency is a very complex topic, and I could not describe the different causes any better than Wikipedia does, so if you want to learn more, you should check out their [article about color blindness](#).

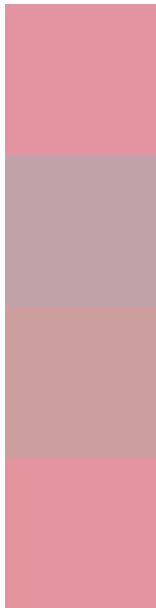
## Dichromacy





**Tritanopia**  
228, 148, 159

# Trichromacy



**Original Color**  
228, 148, 160

**Protanomaly**  
193, 162, 168

**Deuteranomaly**  
205, 158, 158

**Tritanomaly**  
228, 148, 159

# Monochromacy



**Original Color**  
228, 148, 160

**Achromatopsia**  
173, 173, 173

**Achromatomaly**  
193, 164, 168

# CSS Examples

## Text

The CSS property to change the color of the text to RGB 228, 148, 160 is called "color". The color property can be set on classes, ids or directly on the HTML element.

This example shows how text in the color `rgb(228, 148, 160)` looks like.

```
.text, #text, p{  
    color:rgb(228, 148, 160)  
}
```

If you want to add a text shadow in that color use the text-shadow property, you can generate a text shadow directly with our [CSS Text Shadow Generator](#).

Here you see how black text with a 4 pixel rgb(228, 148, 160) colored shadow looks like.

```
.shadow{ text-shadow: 4px 4px 2px rgb(228, 148, 160) }
```

## Border

The CSS property to change the border of an element to RGB 228, 148, 160 is called "border". The border property can be set on classes, ids or directly on the HTML element.

This example shows the color as border, it can be applied via the CSS property "border" or "border-color".

```
.border, #border, table{ border:4px solid rgb(228, 148, 160) }
```

If only the border color should be changed use the property `border-color`.

```
.border{ border-color:rgb(228, 148, 160) }
```

If you want to add a box shadow in that color use:

Here you see how a box with a 4 pixel `rgb(228, 148, 160)` colored shadow looks like.

```
.boxshadow{ -moz-box-shadow:4px 4px 4px  
4px rgb(228, 148, 160); -webkit-box-  
shadow:4px 4px 4px 4px rgb(228, 148, 160);  
box-shadow:4px 4px 4px 4px rgb(228, 148,  
160) }
```

# Background

The CSS property to change the background color of an element to RGB 228, 148, 160 is called "background". The background property can be set on classes, ids or directly on the HTML element.

```
.background, #background, body{  
background: rgb(228, 148, 160) }
```

If only the background color should be changed can be used:

```
.background{ background-color: rgb(228,  
148, 160) }
```

This example shows the color as background, it is applied via the CSS property "background".

To optimize and compress your CSS code, you can use our [online CSS compressor and optimizer](#) based on csstidy. If you want to create a linear or radial gradient as background or border, check our [CSS Gradient Generator](#).



Hey! You found this booklet interesting? Support Converting Colors with the new Membership Option!

The pro membership hides all ads, plus gives you double the colors in the color bucket, and more awesome pro features!

**[Learn more, Memberships starting at \\$2.50/m!](#)**

**Follow me  
on Twitter!**

@ConvertingColor