

Converting Colors

RGB(228, 204, 182)

Have a look what the booklet for
RGB(228, 204, 182) contains.

RGB(228, 204, 182)	3
<i>Conversions</i>	4
<i>Details</i>	6
<i>Harmonies</i>	11
<i>Previews</i>	23
<i>Color Blindness Simulation</i>	26
<i>CSS Examples</i>	29

Color

RGB(228, 204, 182)

Conversions

Conversions Part 1

Format	Color
Hex	E4CCB6
RGB	228, 204, 182
RGB Percent	89%, 80%, 71%
CMY	0.1059, 0.2000, 0.2863
CMYK	0.00, 0.11, 0.20, 0.11
HSL	29°, 46%, 80%
HSV	29°, 20%, 89%
XYZ	62.0313, 63.0571, 53.1578
YIQ	208.6680, 21.3660, -1.7540

Conversions

Conversions Part 2

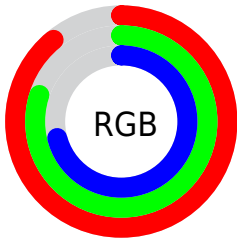
Format	Color
R _Y B	228, 224, 182
Decimal	14994614
CIE Lab	83.47, 4.94, 14.02
CIE LCh	83, 14.868, 70.577
Yxy	63.0571, 0.3480, 0.3538
Android (android.graphics.Color)	4293184694 (0xFFE4CCB6)
YUV	208.6680, -13.1473, 16.9542
Hunter-Lab	79.4085, 0.4733, 15.8959

Details

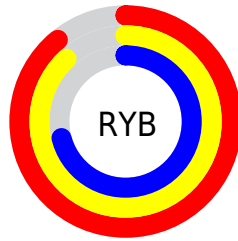
The RGB color **228, 204, 182** is a light color, and the websafe version is hex **CCCCCC**. A complement of this color would be **182, 206, 228**, and the grayscale version is **209, 209, 209**.

A 20% lighter version of the original color is **255, 255, 238**, and **172, 150, 129** is the 20% darker color. If you saturate the color by 10%, you get **228, 192, 159**, and if you desaturate by 10%, it is **228, 216, 205**.

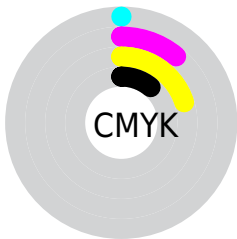
Distribution



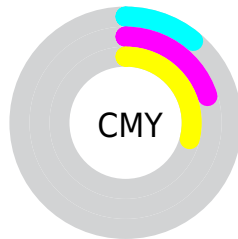
- Red (89%)
- Green (80%)
- Blue (71%)



- Red (89%)
- Yellow (88%)
- Blue (71%)



- Cyan (0%)
- Magenta (11%)
- Yellow (20%)
- Black (11%)



- Cyan (11%)
- Magenta (20%)
- Yellow (29%)

Brightness & Saturation Gradients

These gradients show how the RGB color 228, 204, 182 changes by changing the brightness by 10 percent. The first figure shows a shift by +10% for each color and the second figure -10%.


Similar to the brightness gradients but the following saturation gradients show a change of the RGB color 228, 204, 182 by changing the saturation by 10% instead.

 228, 204, 182

255, 255, 255

 255, 255, 238

 228, 204, 182

 200, 177, 155

 172, 150, 129

 145, 124, 104

 119, 99, 80

 94, 75, 57

 70, 53, 35

 47, 32, 14

 25, 8, 0

 0, 0, 0

 228, 204, 182

 228, 204, 182

 228, 192, 159

 228, 216, 205

 228, 180, 136


 228, 228, 228

 228, 168, 114

 228, 240, 250

 228, 156, 91

 228, 252, 255

 228, 145, 68

 228, 255, 255

 228, 133, 45

 228, 121, 22

 228, 109, 0

Harmonies

Analogous

The Analogous color harmony consists of three colors that are next to each other on the color wheel.



236, 200, 190



228, 204, 182



214, 209, 181

Triad

The Triadic color harmony groups three colors that are evenly spaced from another and form a triangle on the color wheel.



228, 204, 182



174, 216, 213



217, 203, 229

Complementary

The Complementary color scheme is a pair of colors which are on the opposite of each other on the color wheel.



228, 204, 182



182, 206, 228

Split Complementary

Split-complementary colors differ from the complementary color scheme. The scheme consists of three colors, the original color and two neighbors of the complement color.



199, 208, 235



228, 204, 182



173, 215, 226

Square

The Square scheme is like the rectangle color scheme, but the four colors are evenly spaced on the color wheel.



228, 204, 182



183, 216, 198



183, 212, 234



231, 199, 218

Rectangle

The Rectangle color scheme consists of four colors that form a rectangle on the color wheel.



228, 204, 182



204, 212, 184



183, 212, 234



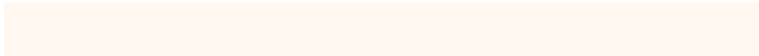
211, 204, 232

Sweetspot

The Sweet Spot groups the original color and five complimentary colors.



228, 204, 182



255, 247, 240



228, 182, 207



128, 123, 119



0, 0, 0



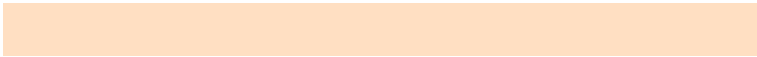
128, 128, 128

Same Dimension

The Same Dimension uses a secret algorithm to generate beautiful new colors.



228, 204, 182



255, 223, 194



228, 226, 182



115, 109, 103



179, 85, 0



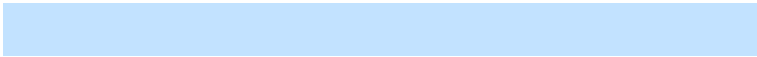
51, 24, 0

Inverse Universe

The Inverse Universe completely reimagines the original color for something new.



182, 206, 228



194, 226, 255



182, 184, 228



103, 109, 115



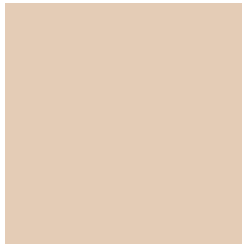
0, 93, 179



0, 27, 51

Previews

White Background



This preview shows how the RGB color 228, 204, 182 looks on a white background.

Color Contrast Check

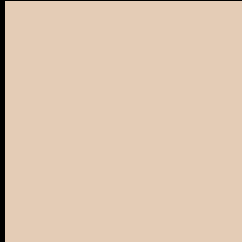
Large Text (above 18pt) WCAG AA × Fail

Any Text WCAG AA × Fail

Large Text (above 18pt) WCAG AAA × Fail

Any Text WCAG AAA × Fail

Black Background



This preview shows how the RGB color 228, 204, 182 looks on a black background.

Color Contrast Check

Large Text (above 18pt) WCAG AA ✓ Pass

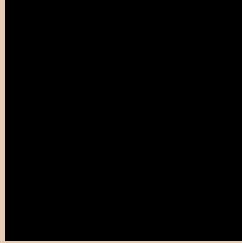
Any Text WCAG AA ✓ Pass

Large Text (above 18pt) WCAG AAA ✓ Pass

Any Text WCAG AAA ✓ Pass

If you want to check with other color combinations, try the [Color Contrast Checker](#).

RGB 228, 204, 182 Background



This preview shows how black text looks on a background with the RGB color 228, 204, 182.


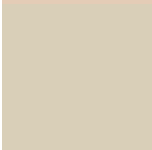


This preview shows how white text looks on a background with the RGB color 228, 204, 182.

Color Blindness Simulation

Color vision deficiency is a very complex topic, and I could not describe the different causes any better than Wikipedia does, so if you want to learn more, you should check out their [article about color blindness](#).

Dichromacy

	Original Color 228, 204, 182
	Protanopia 217, 207, 184
	Deuteranopia 237, 200, 183



Tritanopia
232, 199, 215

Trichromacy



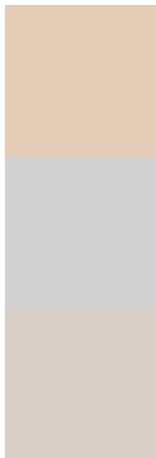
Original Color
228, 204, 182

Protanomaly
221, 206, 183

Deuteranomaly
234, 201, 183

Tritanomaly
231, 201, 203

Monochromacy



Original Color
228, 204, 182

Achromatopsia
209, 209, 209

Achromatomaly
216, 207, 199

CSS Examples

Text

The CSS property to change the color of the text to RGB 228, 204, 182 is called "color". The color property can be set on classes, ids or directly on the HTML element.

This example shows how text in the color `rgb(228, 204, 182)` looks like.

```
.text, #text, p{  
    color:rgb(228, 204, 182)  
}
```

If you want to add a text shadow in that color use the text-shadow property, you can generate a text shadow directly with our [CSS Text Shadow Generator](#).

Here you see how black text with a 4 pixel rgb(228, 204, 182) colored shadow looks like.

```
.shadow{ text-shadow: 4px 4px 2px rgb(228, 204, 182) }
```

Border

The CSS property to change the border of an element to RGB 228, 204, 182 is called "border". The border property can be set on classes, ids or directly on the HTML element.

This example shows the color as border, it can be applied via the CSS property "border" or "border-color".

```
.border, #border, table{ border:4px solid rgb(228, 204, 182) }
```

If only the border color should be changed use the property `border-color`.

```
.border{ border-color:rgb(228, 204, 182) }
```

If you want to add a box shadow in that color use:

Here you see how a box with a 4 pixel `rgb(228, 204, 182)` colored shadow looks like.

```
.boxshadow{ -moz-box-shadow:4px 4px 4px 4px rgb(228, 204, 182); -webkit-box-shadow:4px 4px 4px 4px rgb(228, 204, 182); box-shadow:4px 4px 4px 4px rgb(228, 204, 182) }
```

Background

The CSS property to change the background color of an element to RGB 228, 204, 182 is called "background". The background property can be set on classes, ids or directly on the HTML element.

```
.background, #background, body{  
background: rgb(228, 204, 182) }
```

If only the background color should be changed can be used:

```
.background{ background-color: rgb(228,  
204, 182) }
```

This example shows the color as background, it is applied via the CSS property "background".

To optimize and compress your CSS code, you can use our [online CSS compressor and optimizer](#) based on csstidy. If you want to create a linear or radial gradient as background or border, check our [CSS Gradient Generator](#).

Hey! You found this booklet interesting? Support Converting Colors with the new Membership Option!

The pro membership hides all ads, plus gives you double the colors in the color bucket, and more awesome pro features!

[Learn more, Memberships starting at \\$2.50/m!](#)

**Follow me
on Twitter!**

@ConvertingColor