

Converting Colors

RGB(228, 205, 207)

Have a look what the booklet for
RGB(228, 205, 207) contains.

RGB(228, 205, 207)	3
<i>Conversions</i>	4
<i>Details</i>	6
<i>Harmonies</i>	11
<i>Previews</i>	23
<i>Color Blindness Simulation</i>	26
<i>CSS Examples</i>	29

Color

RGB(228, 205, 207)

Conversions

Conversions Part 1

Format	Color
Hex	E4CDCF
RGB	228, 205, 207
RGB Percent	89%, 80%, 81%
CMY	0.1059, 0.1961, 0.1882
CMYK	0.00, 0.10, 0.09, 0.11
HSL	355°, 30%, 85%
HSV	355°, 10%, 89%
XYZ	65.0887, 64.6616, 68.0819
YIQ	212.1050, 13.0660, 5.4980

Conversions

Conversions Part 2

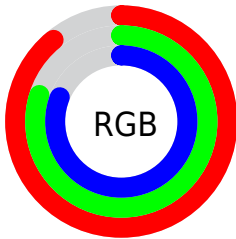
Format	Color
R _Y B	228, 205, 207
Decimal	14994895
CIE Lab	84.31, 8.35, 1.92
CIE LCh	84, 8.568, 12.976
Yxy	64.6616, 0.3290, 0.3269
Android (android.graphics.Color)	4293184975 (0xFFE4CDCF)
YUV	212.1050, -2.5168, 13.9399
Hunter-Lab	80.4124, 3.7625, 6.0903

Details

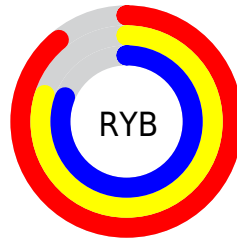
The RGB color **228, 205, 207** is a light color, and the websafe version is hex **CCCCCC**. A complement of this color would be **205, 228, 226**, and the grayscale version is **212, 212, 212**.

A 20% lighter version of the original color is 255, 255, 255, and **172, 151, 153** is the 20% darker color. If you saturate the color by 10%, you get **228, 182, 186**, and if you desaturate by 10%, it is **228, 228, 228**.

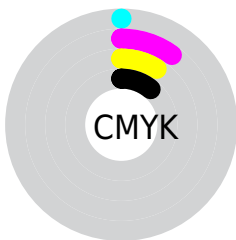
Distribution



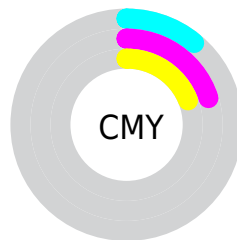
- Red (89%)
- Green (80%)
- Blue (81%)



- Red (89%)
- Yellow (80%)
- Blue (81%)



- Cyan (0%)
- Magenta (10%)
- Yellow (9%)
- Black (11%)



- Cyan (11%)
- Magenta (20%)
- Yellow (19%)

Brightness & Saturation Gradients

These gradients show how the RGB color 228, 205, 207 changes by changing the brightness by 10 percent. The first figure shows a shift by +10% for each color and the second figure -10%.

Similar to the brightness gradients but the following saturation gradients show a change of the RGB color 228, 205, 207 by changing the saturation by 10% instead.

■ 228, 205, 207

255, 255, 255

■ 228, 205, 207

■ 200, 178, 179

■ 172, 151, 153

■ 146, 125, 127

■ 120, 100, 102

■ 95, 76, 78

■ 71, 53, 55

■ 48, 32, 34

■ 29, 9, 11

■ 0, 0, 0

 228, 205, 207

 228, 205, 207

 228, 182, 186

 228, 228, 228


 228, 159, 165

 228, 251, 249

 228, 137, 145

 228, 255, 255

 228, 114, 124

 228, 91, 103

 228, 68, 82

 228, 45, 61

 228, 23, 40

 228, 0, 20

Harmonies

Analogous

The Analogous color harmony consists of three colors that are next to each other on the color wheel.



224, 205, 215



228, 205, 207



227, 206, 200

Triad

The Triadic color harmony groups three colors that are evenly spaced from another and form a triangle on the color wheel.



228, 205, 207



204, 213, 198



197, 212, 226

Complementary

The Complementary color scheme is a pair of colors which are on the opposite of each other on the color wheel.



228, 205, 207



205, 228, 226

Split Complementary

Split-complementary colors differ from the complementary color scheme. The scheme consists of three colors, the original color and two neighbors of the complement color.



192, 214, 221



228, 205, 207



196, 215, 205

Square

The Square scheme is like the rectangle color scheme, but the four colors are evenly spaced on the color wheel.



228, 205, 207



213, 211, 195



191, 215, 214



206, 210, 226

Rectangle

The Rectangle color scheme consists of four colors that form a rectangle on the color wheel.



228, 205, 207



224, 207, 196



191, 215, 214



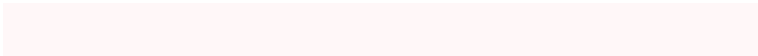
195, 213, 224

Sweetspot

The Sweet Spot groups the original color and five complimentary colors.



228, 205, 207



255, 247, 248



226, 205, 228



128, 122, 123



0, 0, 0



128, 128, 128

Same Dimension

The Same Dimension uses a secret algorithm to generate beautiful new colors.



228, 205, 207



255, 224, 227



228, 214, 205



115, 103, 104



179, 0, 16



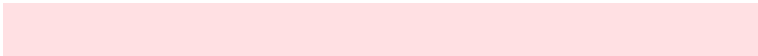
51, 0, 4

Inverse Universe

The Inverse Universe completely reimagines the original color for something new.



228, 205, 207



255, 224, 227



205, 219, 228



115, 103, 104



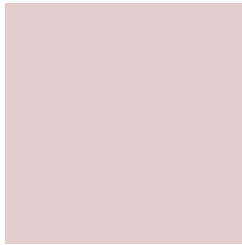
179, 0, 16



51, 0, 4

Previews

White Background



This preview shows how the RGB color 228, 205, 207 looks on a white background.

Color Contrast Check

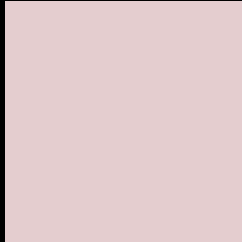
Large Text (above 18pt) WCAG AA × Fail

Any Text WCAG AA × Fail

Large Text (above 18pt) WCAG AAA × Fail

Any Text WCAG AAA × Fail

Black Background



This preview shows how the RGB color 228, 205, 207 looks on a black background.

Color Contrast Check

Large Text (above 18pt) WCAG AA ✓ Pass

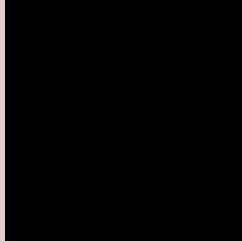
Any Text WCAG AA ✓ Pass

Large Text (above 18pt) WCAG AAA ✓ Pass

Any Text WCAG AAA ✓ Pass

If you want to check with other color combinations, try the [Color Contrast Checker](#).

RGB 228, 205, 207 Background



This preview shows how black text looks on a background with the RGB color 228, 205, 207.



This preview shows how white text looks on a background with the RGB color 228, 205, 207.

Color Blindness Simulation

Color vision deficiency is a very complex topic, and I could not describe the different causes any better than Wikipedia does, so if you want to learn more, you should check out their [article about color blindness](#).

Dichromacy

	Original Color 228 , 205 , 207
	Protanopia 214 , 209 , 210
	Deuteranopia 232 , 204 , 207



Tritanopia
230, 203, 219

Trichromacy



Original Color

228, 205, 207

Protanomaly

219, 208, 209

Deuteranomaly

231, 204, 207

Tritanomaly

229, 204, 215

Monochromacy



Original Color

228, 205, 207

Achromatopsia

212, 212, 212

Achromatomaly

218, 209, 210

CSS Examples

Text

The CSS property to change the color of the text to RGB 228, 205, 207 is called "color". The color property can be set on classes, ids or directly on the HTML element.

This example shows how text in the color rgb(228, 205, 207) looks like.

```
.text, #text, p{  
    color:rgb(228, 205, 207)  
}
```

If you want to add a text shadow in that color use the text-shadow property, you can generate a text shadow directly with our [CSS Text Shadow Generator](#).

Here you see how black text with a 4 pixel rgb(228, 205, 207) colored shadow looks like.

```
.shadow{ text-shadow: 4px 4px 2px rgb(228, 205, 207) }
```

Border

The CSS property to change the border of an element to RGB 228, 205, 207 is called "border". The border property can be set on classes, ids or directly on the HTML element.

This example shows the color as border, it can be applied via the CSS property "border" or "border-color".

```
.border, #border, table{ border:4px solid rgb(228, 205, 207) }
```

If only the border color should be changed use the property `border-color`.

```
.border{ border-color:rgb(228, 205, 207) }
```

If you want to add a box shadow in that color use:

Here you see how a box with a 4 pixel `rgb(228, 205, 207)` colored shadow looks like.

```
.boxshadow{ -moz-box-shadow:4px 4px 4px  
4px rgb(228, 205, 207); -webkit-box-  
shadow:4px 4px 4px 4px rgb(228, 205, 207);  
box-shadow:4px 4px 4px 4px rgb(228, 205,  
207) }
```

Background

The CSS property to change the background color of an element to RGB 228, 205, 207 is called "background". The background property can be set on classes, ids or directly on the HTML element.

```
.background, #background, body{  
background: rgb(228, 205, 207) }
```

If only the background color should be changed can be used:

```
.background{ background-color: rgb(228,  
205, 207) }
```

This example shows the color as background, it is applied via the CSS property "background".

To optimize and compress your CSS code, you can use our [online CSS compressor and optimizer](#) based on csstidy. If you want to create a linear or radial gradient as background or border, check our [CSS Gradient Generator](#).

Hey! You found this booklet interesting? Support Converting Colors with the new Membership Option!

The pro membership hides all ads, plus gives you double the colors in the color bucket, and more awesome pro features!

[Learn more, Memberships starting at \\$2.50/m!](#)

**Follow me
on Twitter!**

@ConvertingColor